

PLATES

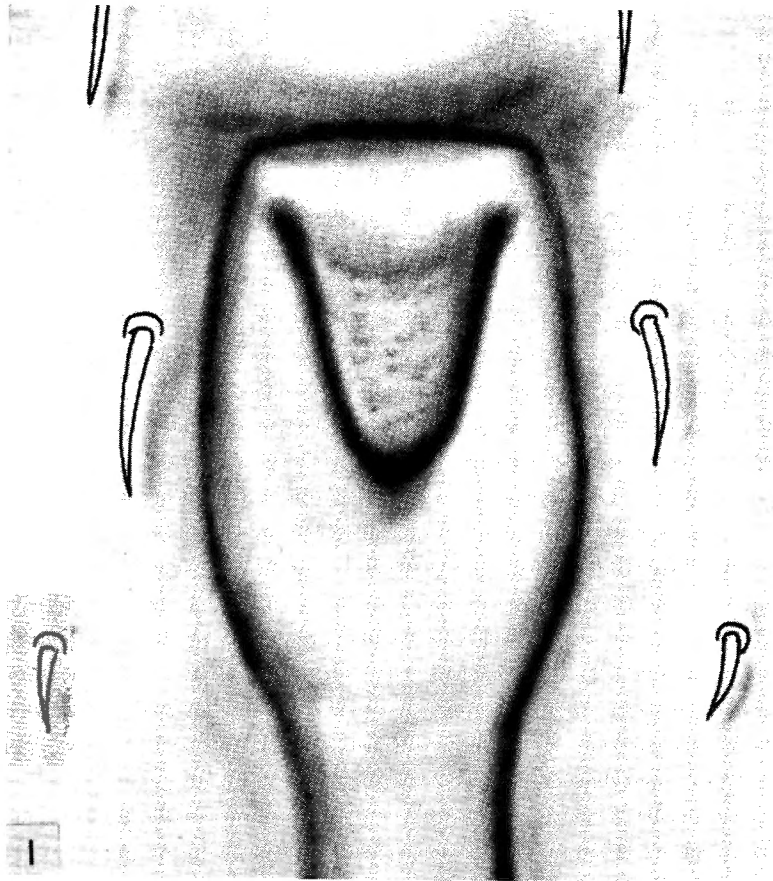


FIG. 1. — *Rhipicephalus longus*. Female genital aperture (unmounted).
Specimen from the Upemba National Park, Republic of the Congo.

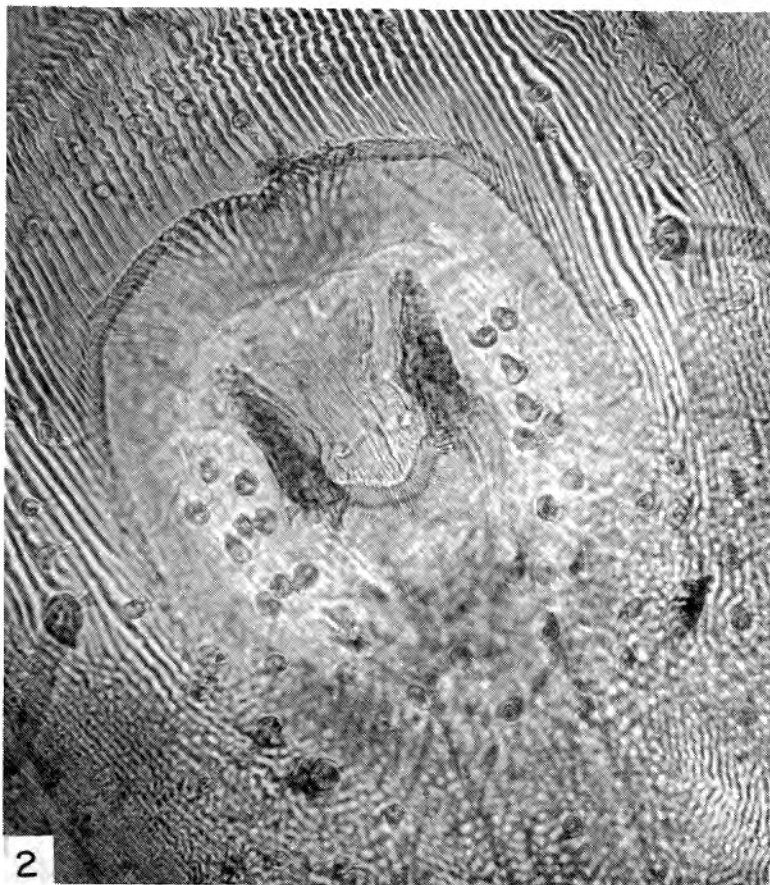


FIG. 2. — *Rhipicephalus longus*. Female genital aperture (mounted).
Specimen from the Upemba National Park, Republic of the Congo.

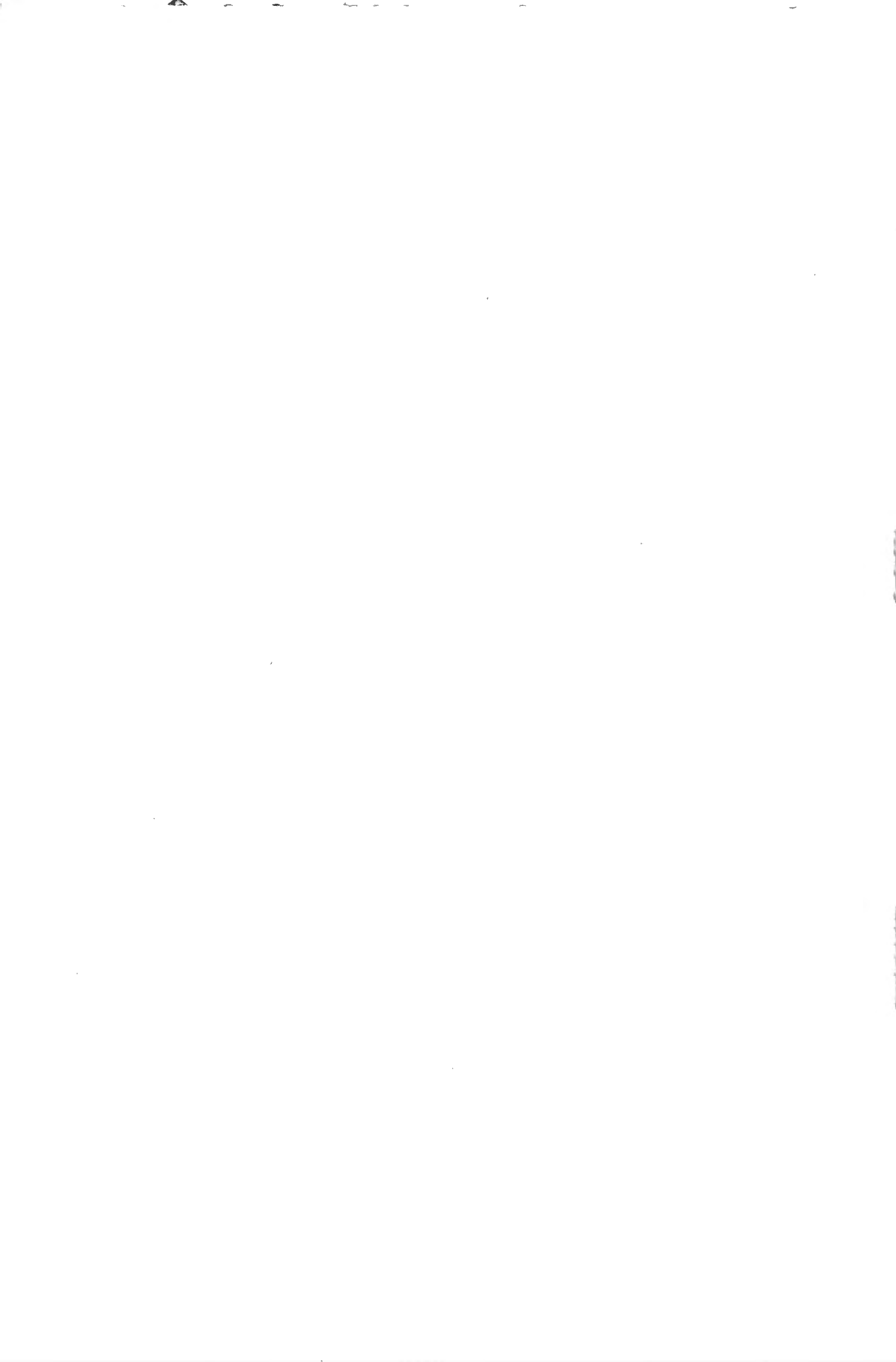
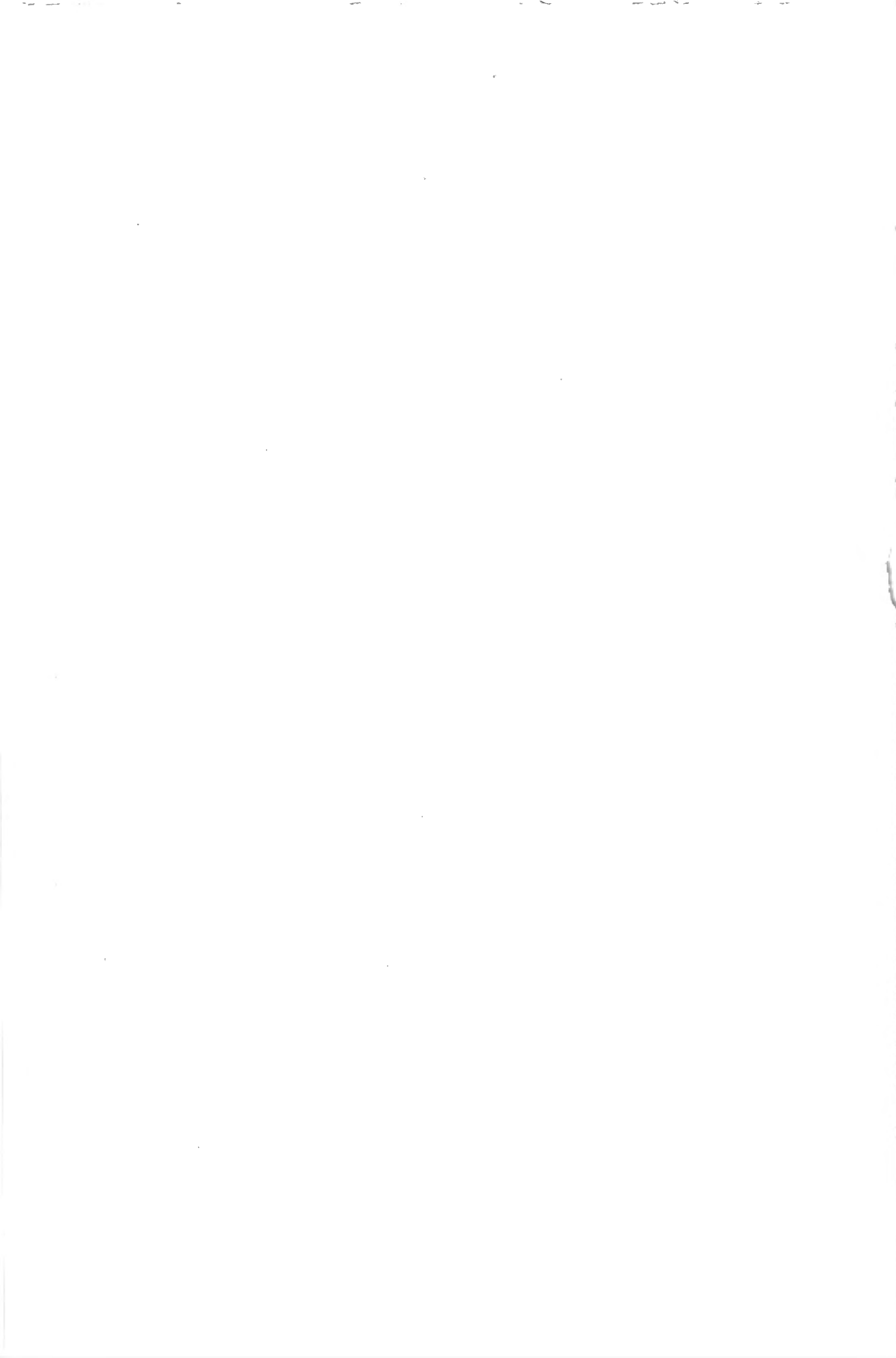




FIG. 3. — *Rhipicephalus falcatus* (female cotype) = *R. longus*.
Female genital aperture (mounted).
Specimen from Lake Nyassa, B.M.N.H. No. 2895.



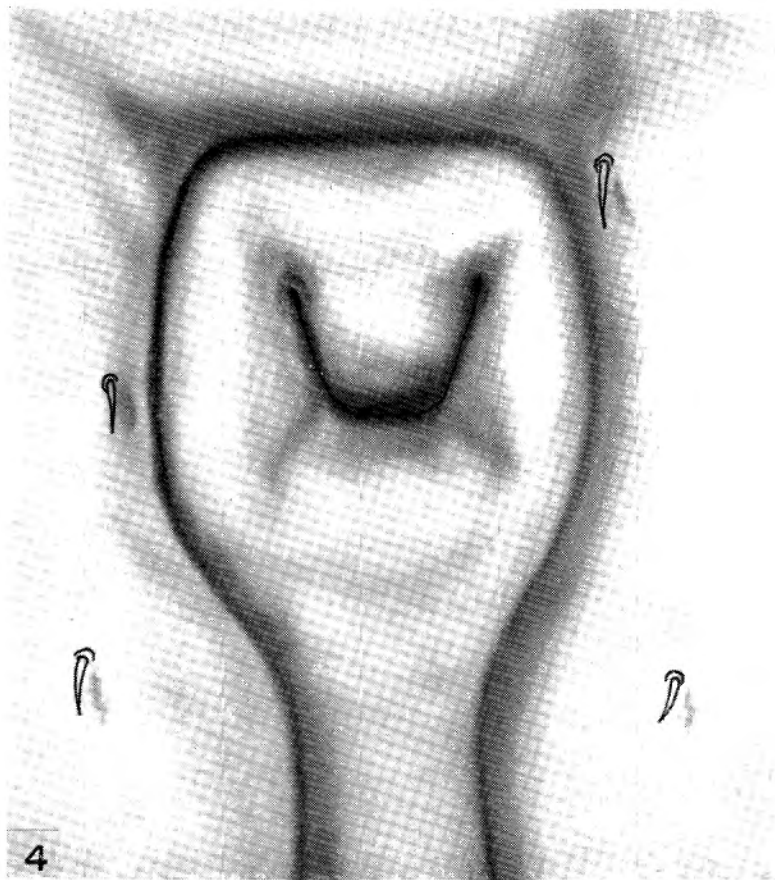
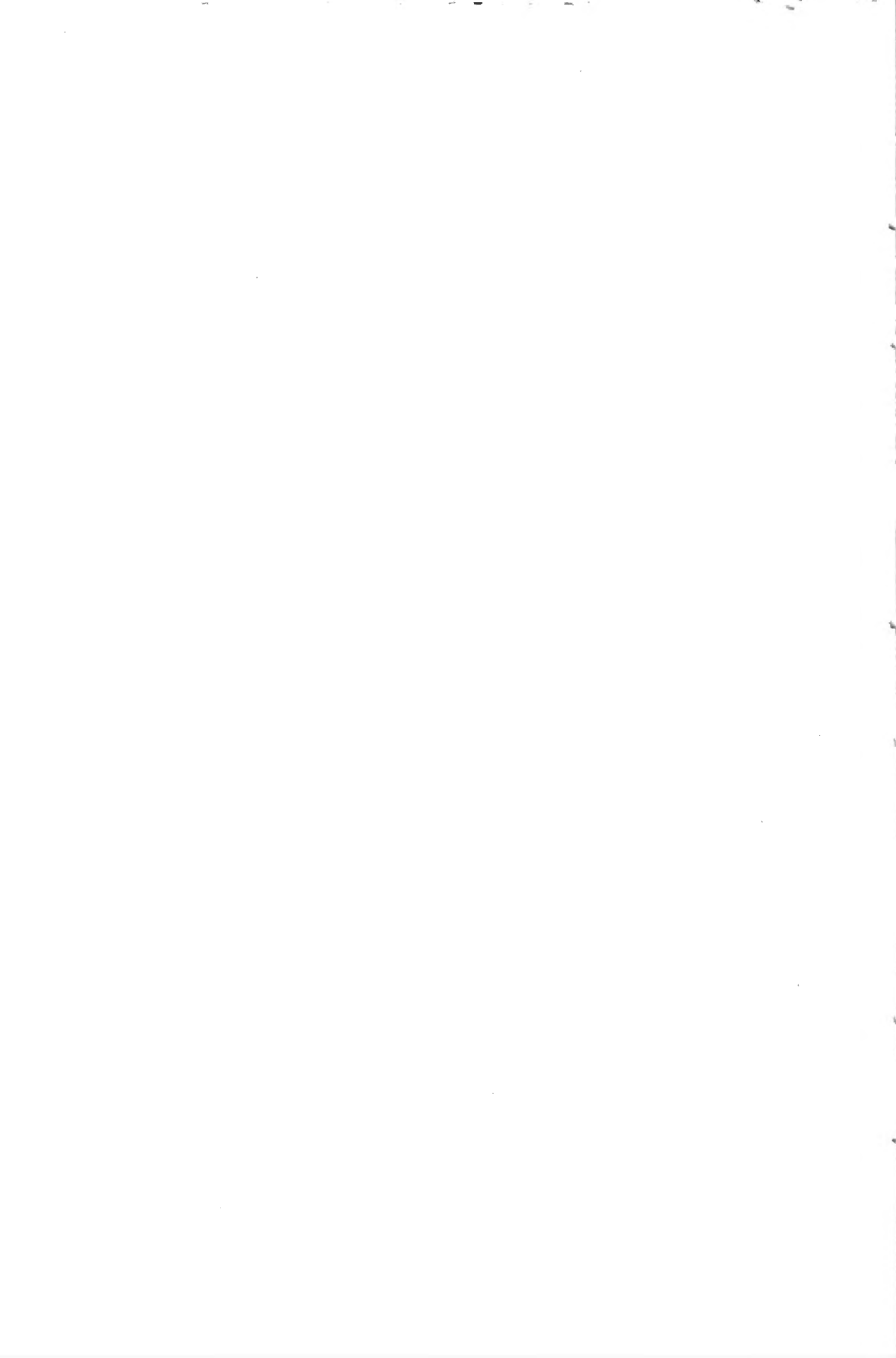


FIG. 4. — *Rhipicephalus simpsoni*. Female genital aperture (unmounted).
Specimen from the Garamba National Park, Republic of the Congo.



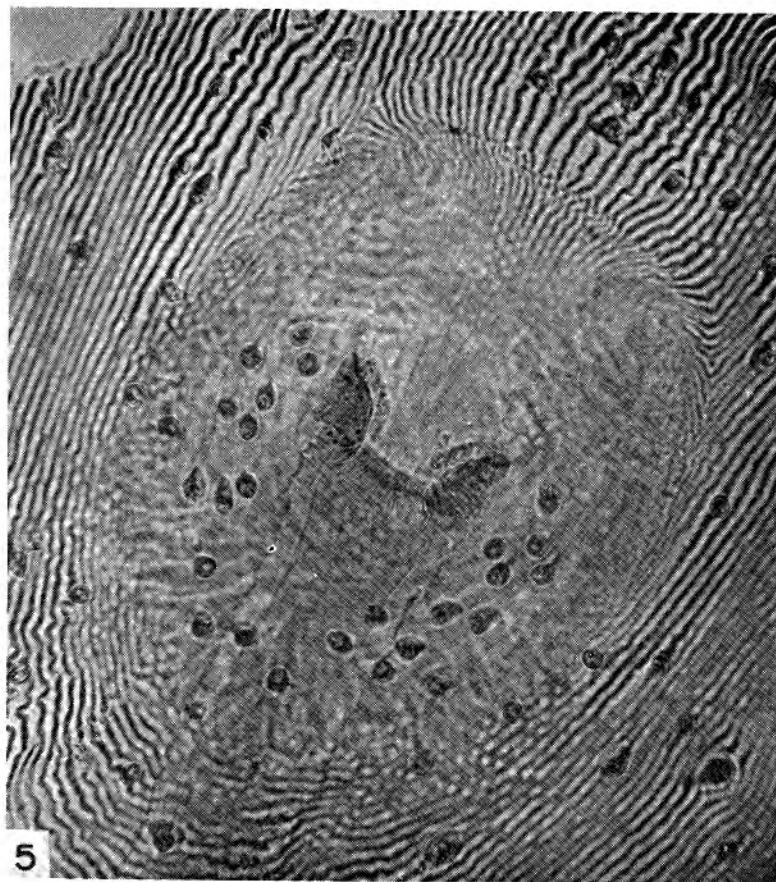


FIG. 5. — *Rhipicephalus simpsoni*. Female genital aperture (mounted).
Specimen from the Garamba National Park, Republic of the Congo.



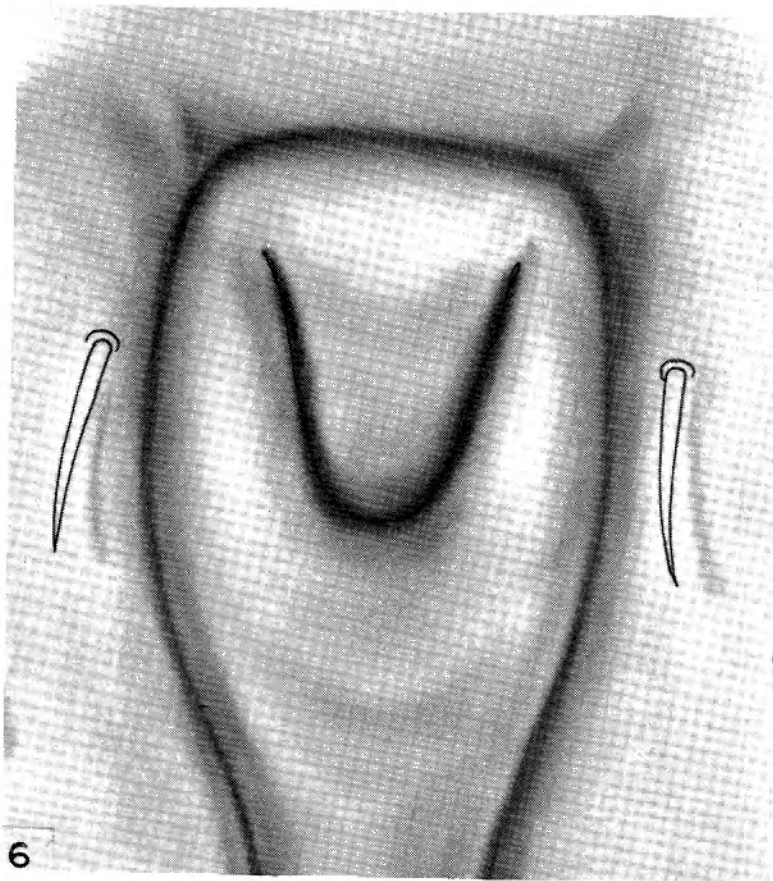
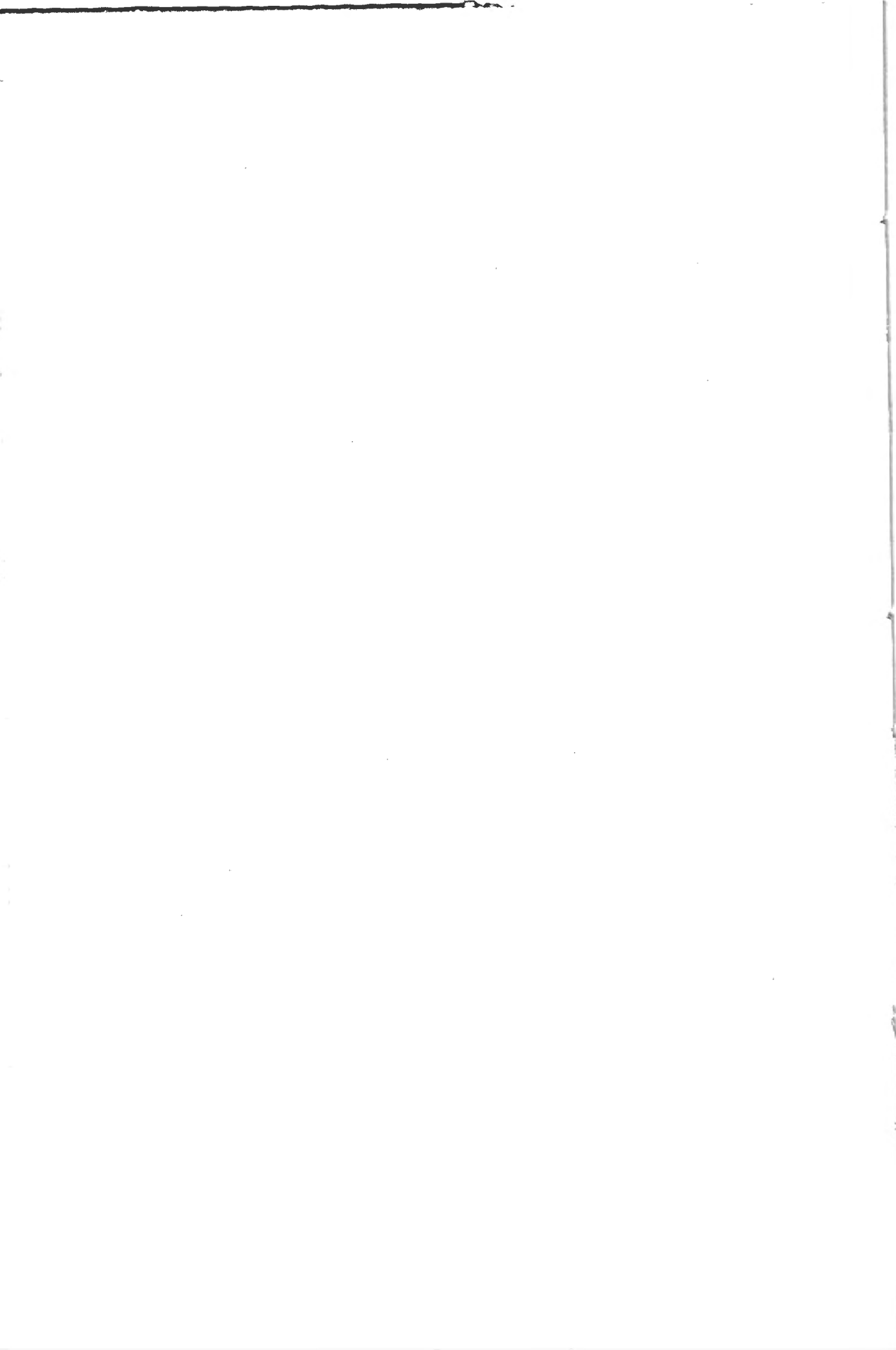


FIG. 6. — *Rhipicephalus senegalensis*. Female genital aperture (unmounted).
Specimen from Sierra Leone.



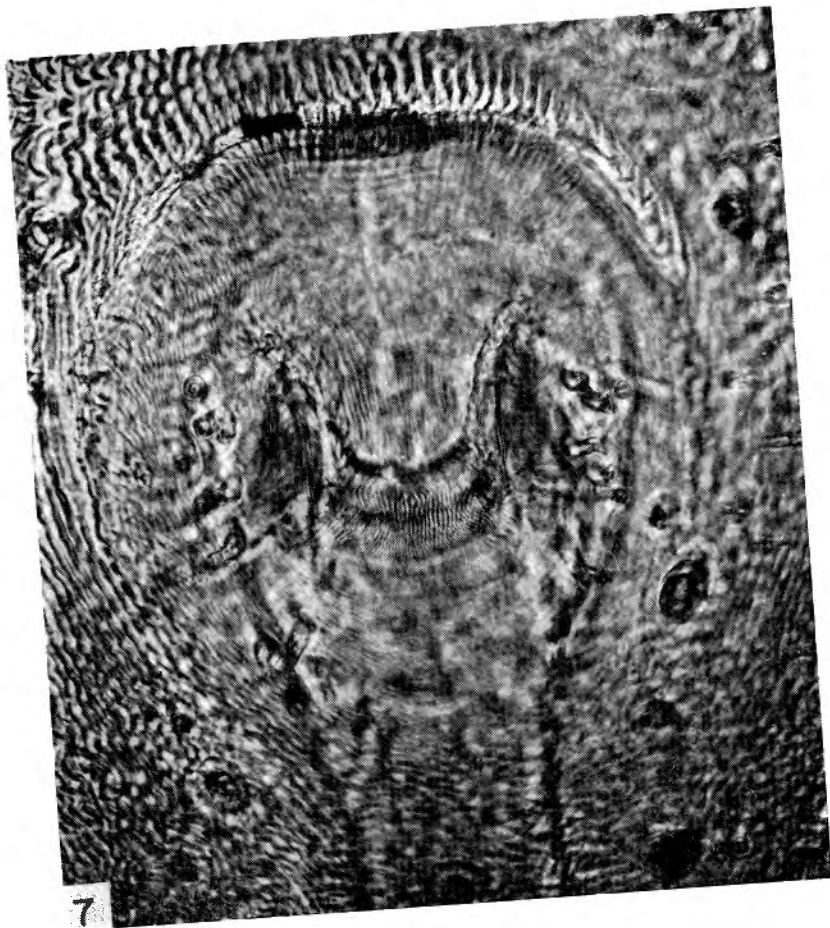


FIG. 7. — *Rhipicephalus senegalensis*. Female genital aperture (mounted).
Specimen from Sierra Leone.

C. M. CLIFFORD and G. ANASTOS. — Ticks.

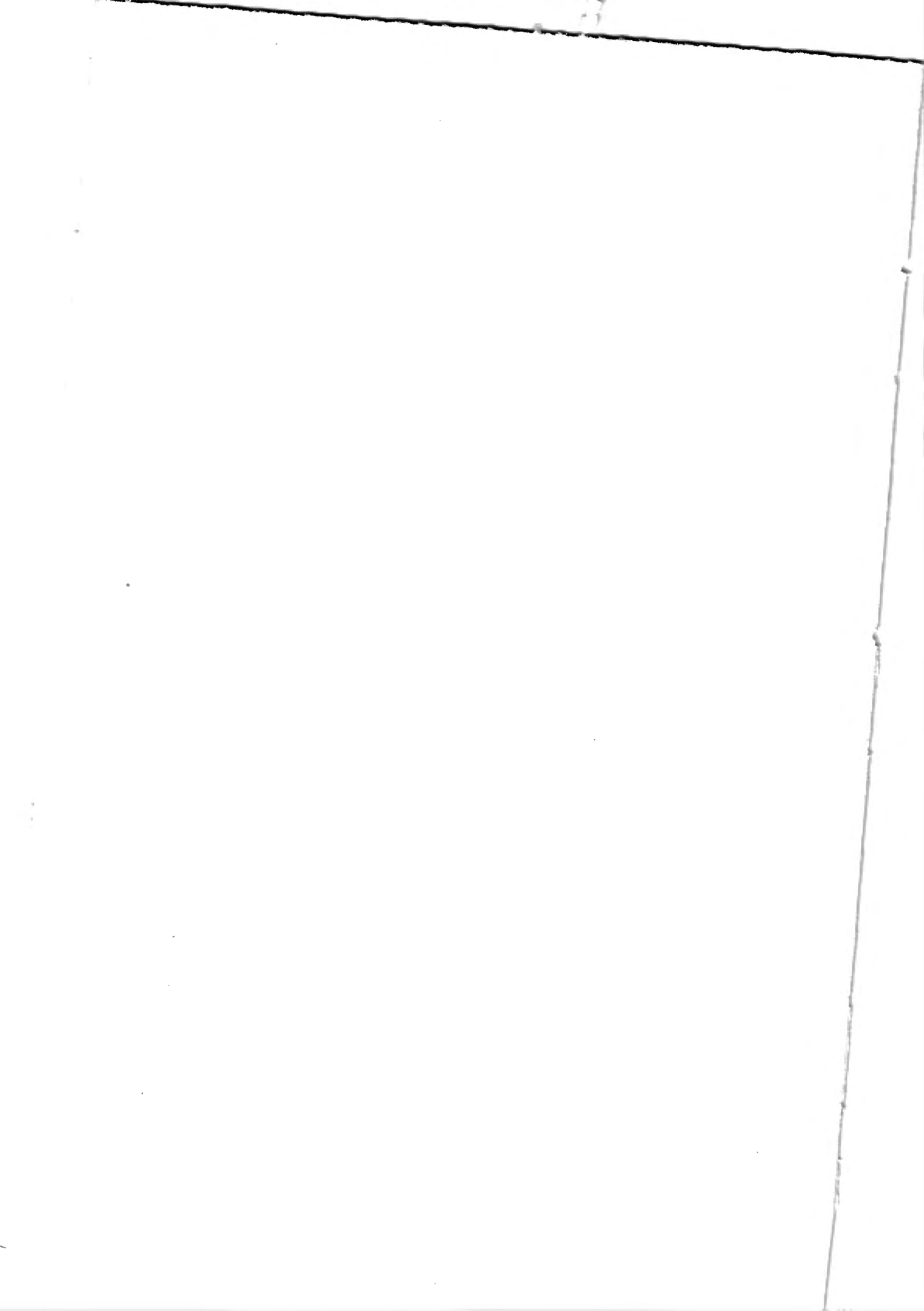




FIG. 8. — *Rhipicephalus senegalensis*. Female genital aperture (mounted).
Specimen from the Garamba National Park, Republic of the Congo.

C. M. CLIFFORD and G. ANASTOS. — Ticks.



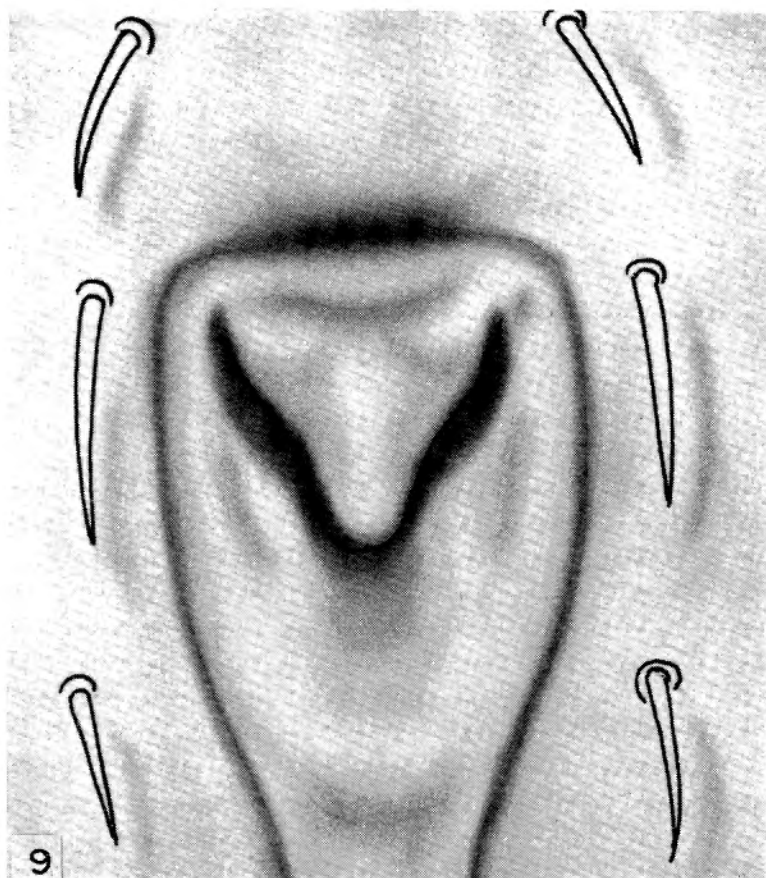


FIG. 9. — *Rhipicephalus pseudolongus*. Female genital aperture (unmounted).
Specimen from the Garamba National Park, Republic of the Congo.





FIG. 10. — *Rhipicephalus pseudolongus*. Female genital aperture (mounted).
Specimen from the Garamba National Park, Republic of the Congo.

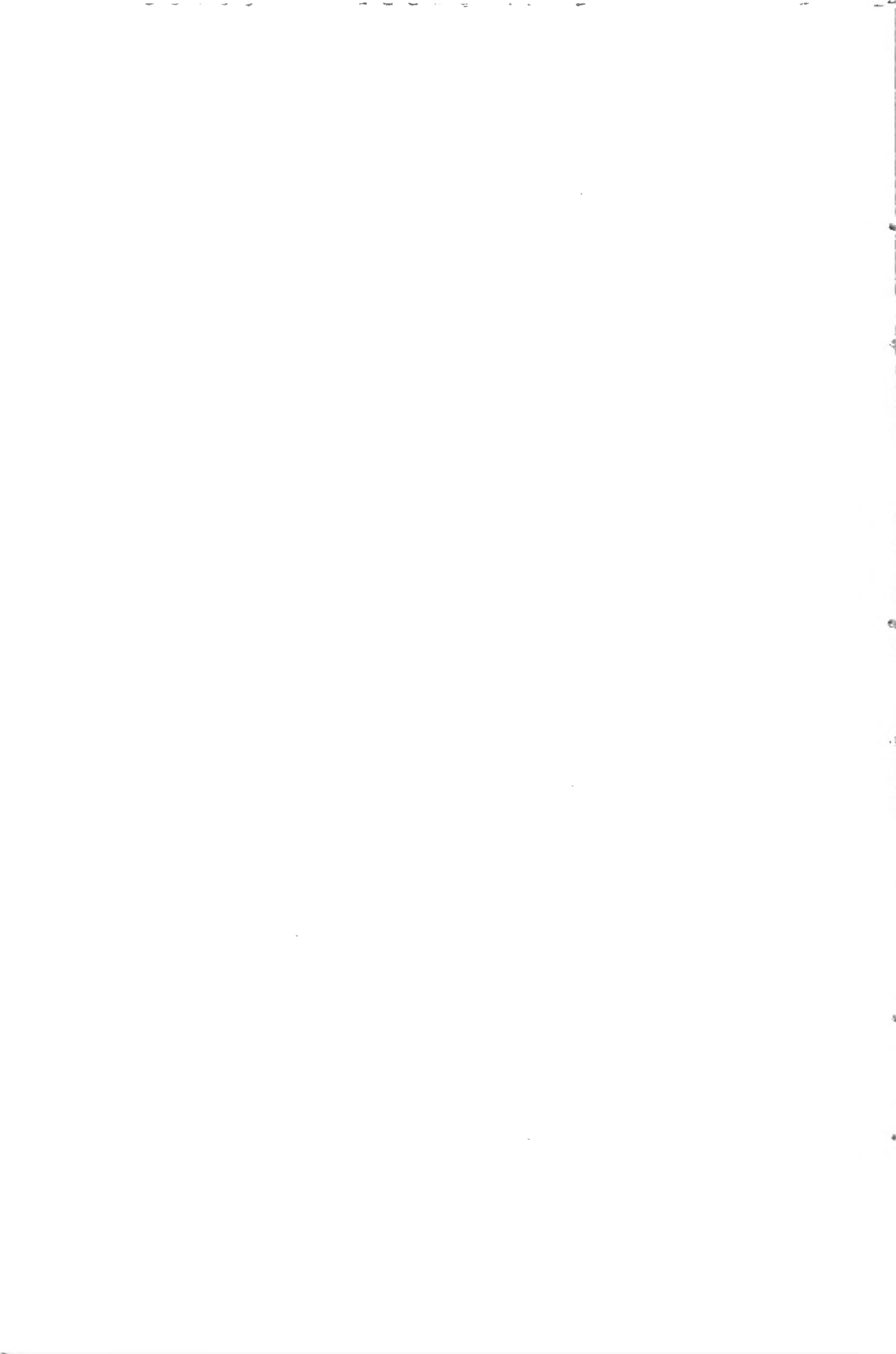




FIG. 11. — *Rhipicephalus compositus*. Female genital aperture (mounted).
Specimen furnished by Miss JANE WALKER;
reared from female collected at Thompson's Falls, Kenya.



FIG. 12. — *Rhipicephalus masseyi*. Female genital aperture (mounted).
Specimen from the Upemba National Park, Republic of the Congo.



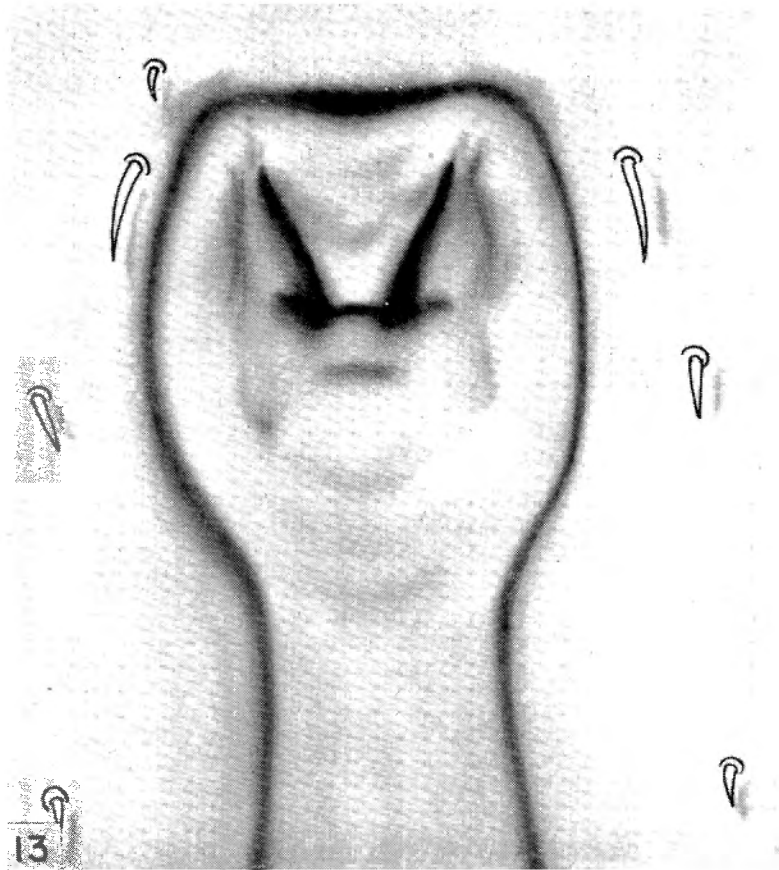


FIG. 13. — *Rhipicephalus simus*. Female genital aperture (unmounted).
Specimen furnished by Dr. G. THEILER;
laboratory reared from female collected at Pretoria North, Union of South Africa.

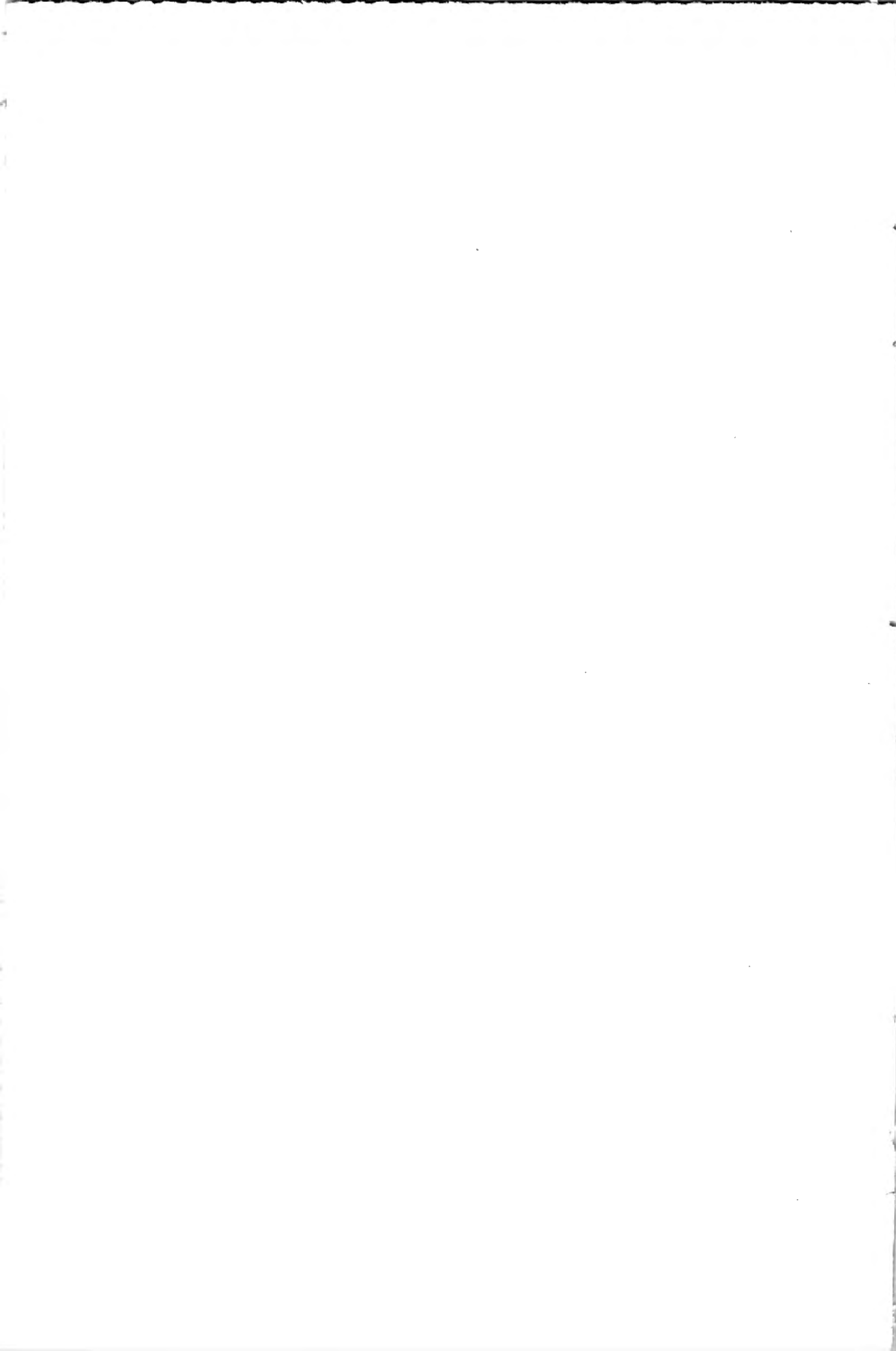
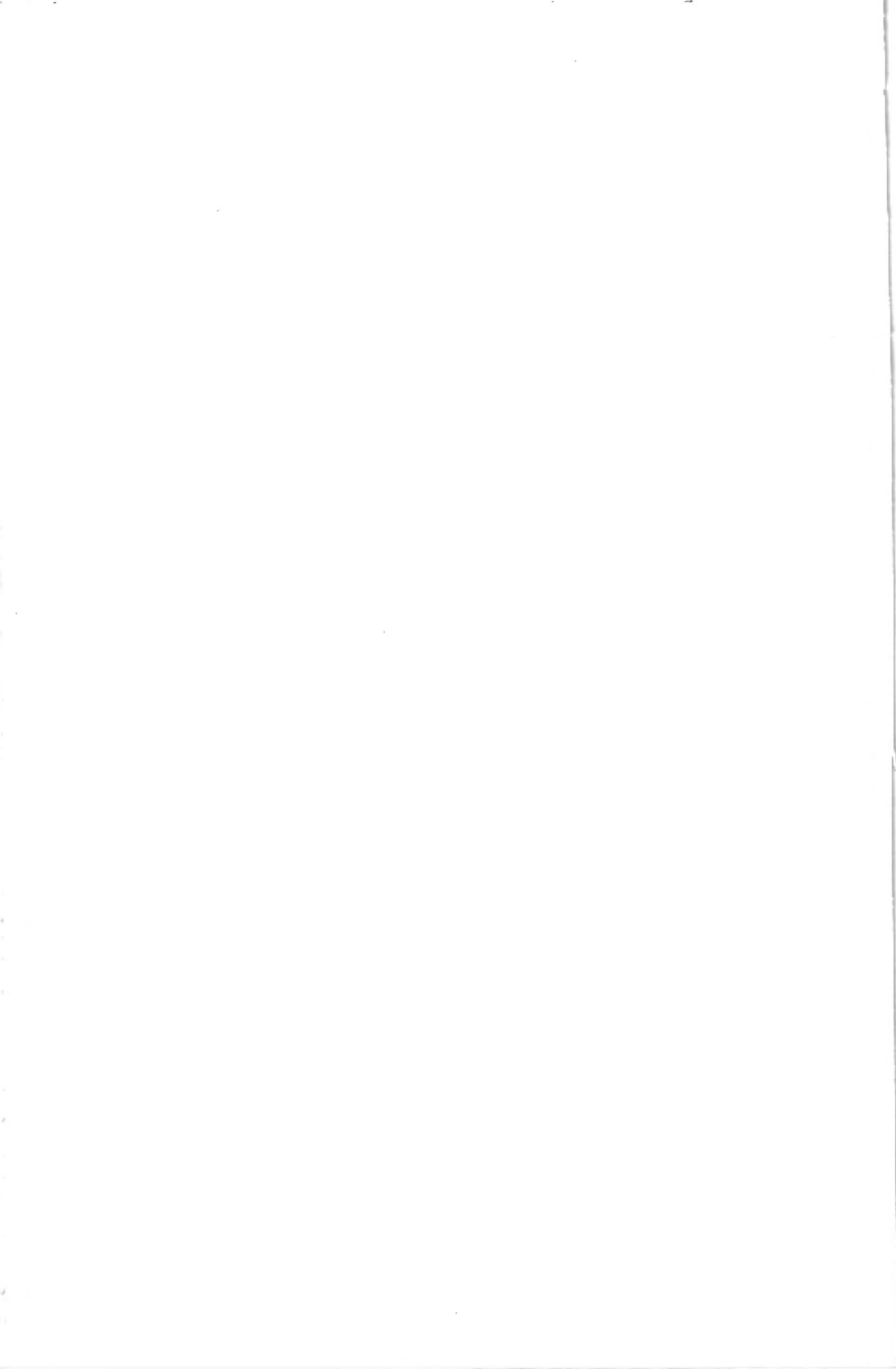




FIG. 14. — *Rhipicephalus simus*. Female genital aperture (mounted).
Specimen furnished by Dr. G. THEILER;
laboratory reared from female collected at Pretoria North, Union of South Africa.



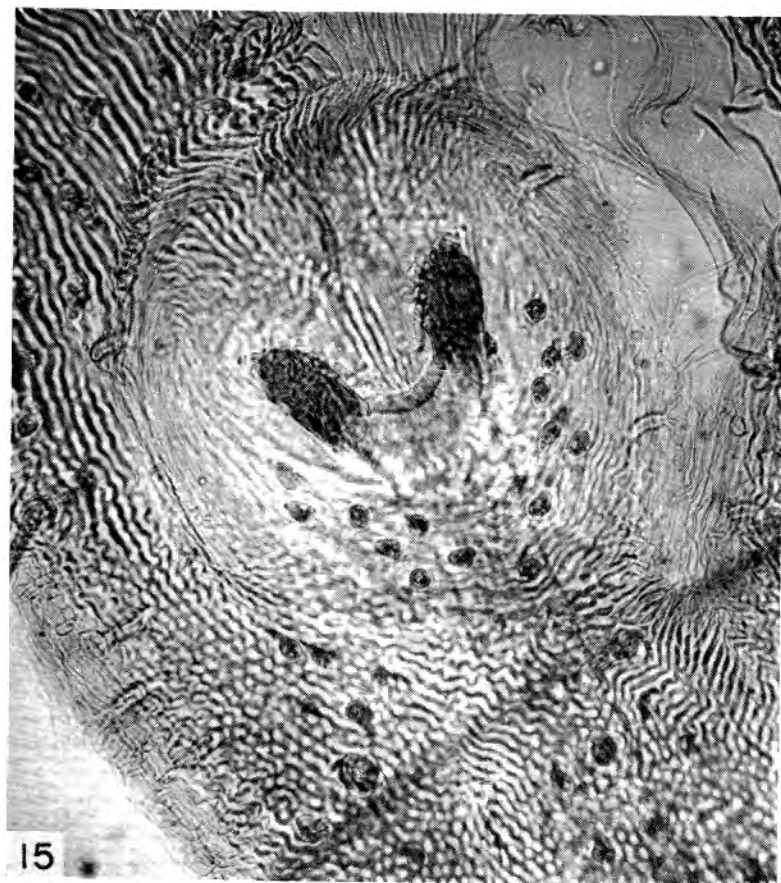


FIG. 15. — *Rhipicephalus supertritus*. Female genital aperture (mounted).
Specimen from the Garamba National Park, Republic of the Congo.

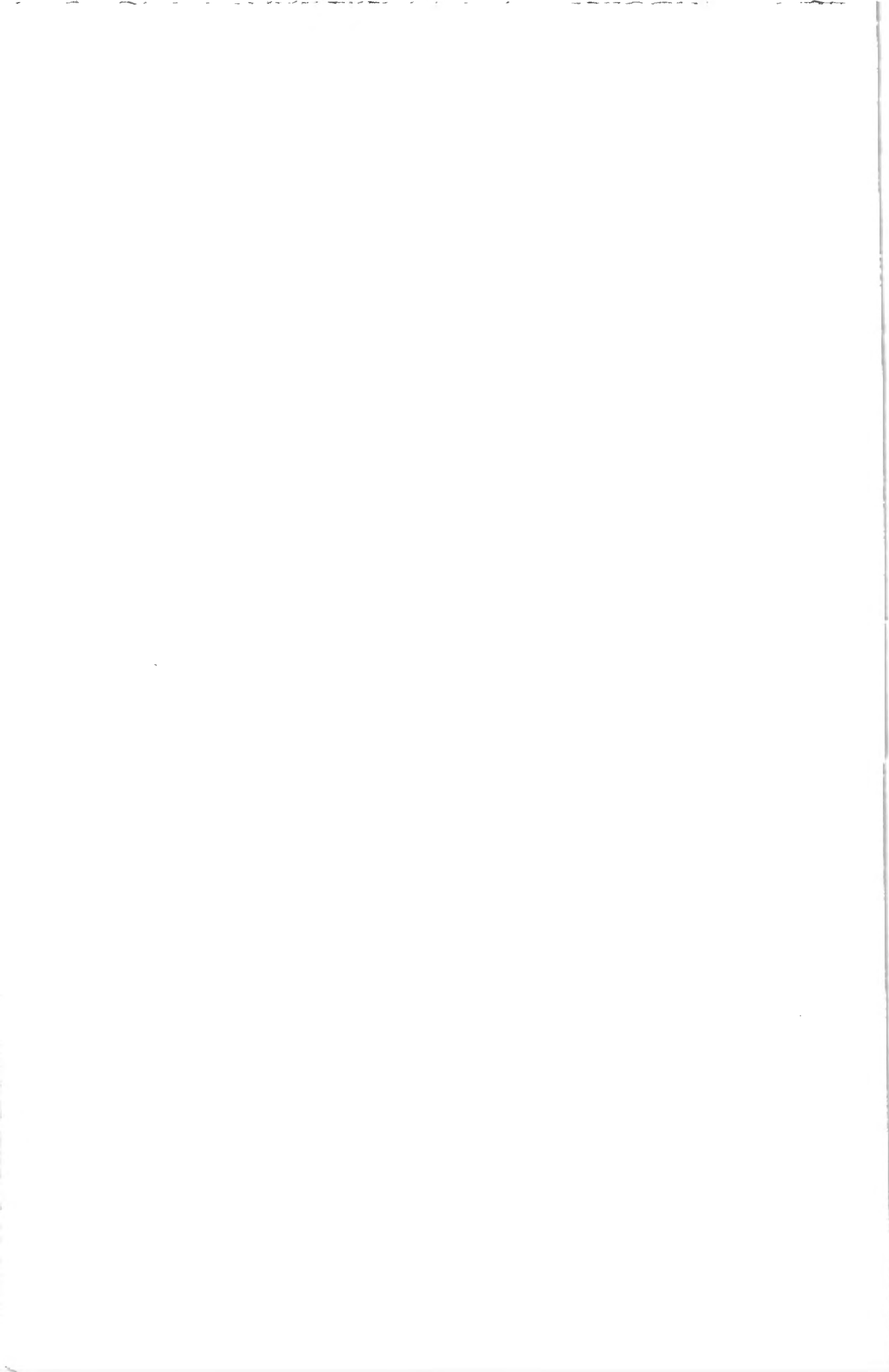




FIG. 16. — *Rhipicephalus tricuspis*. Female genital aperture (mounted).
Specimen from the Upemba National Park, Republic of the Congo.

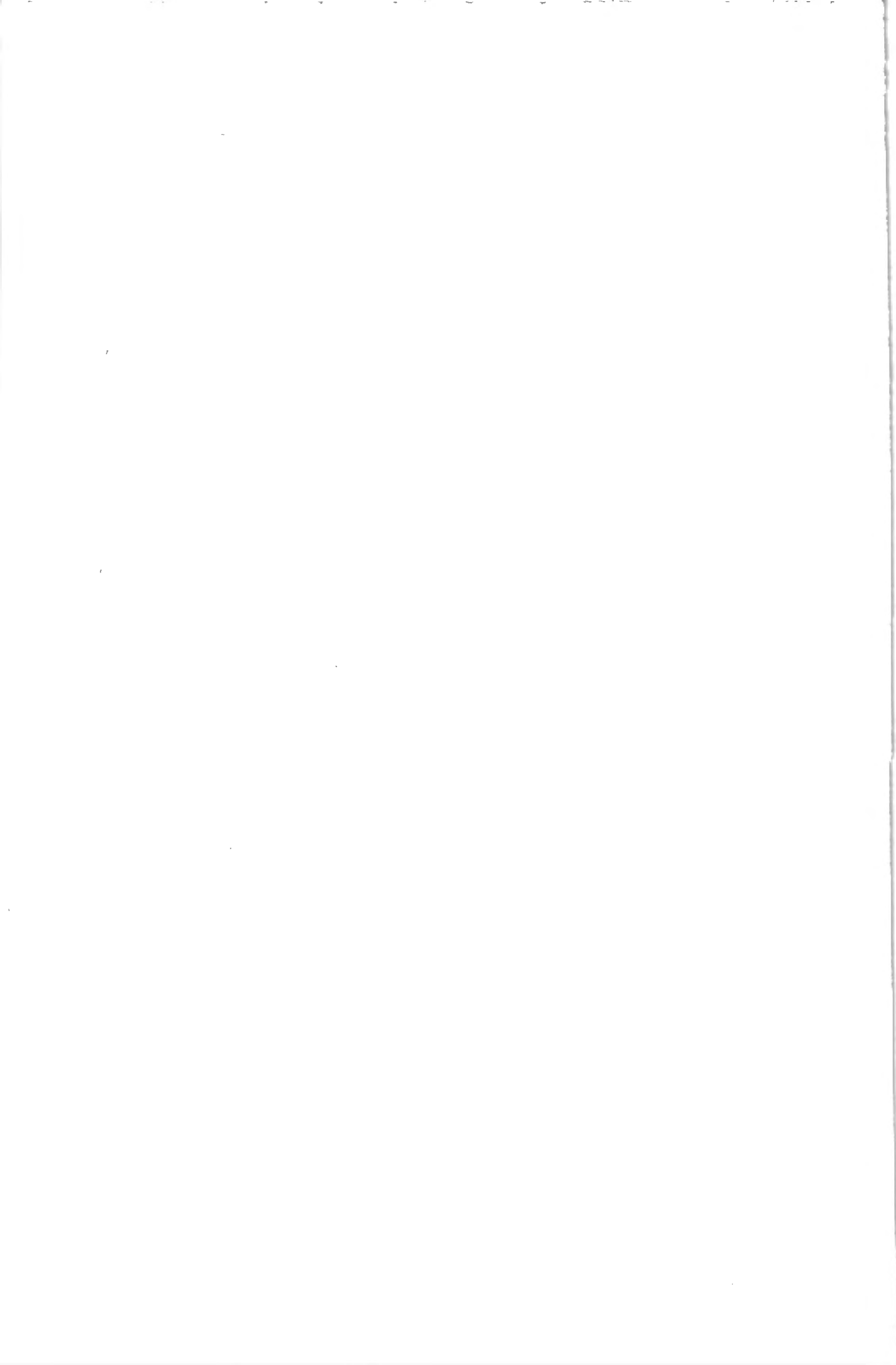




FIG. 17. — *Rhipicephalus* sp. nr. *pravus*. Female genital aperture (mounted).
Specimen from the Upemba National Park, Republic of the Congo.

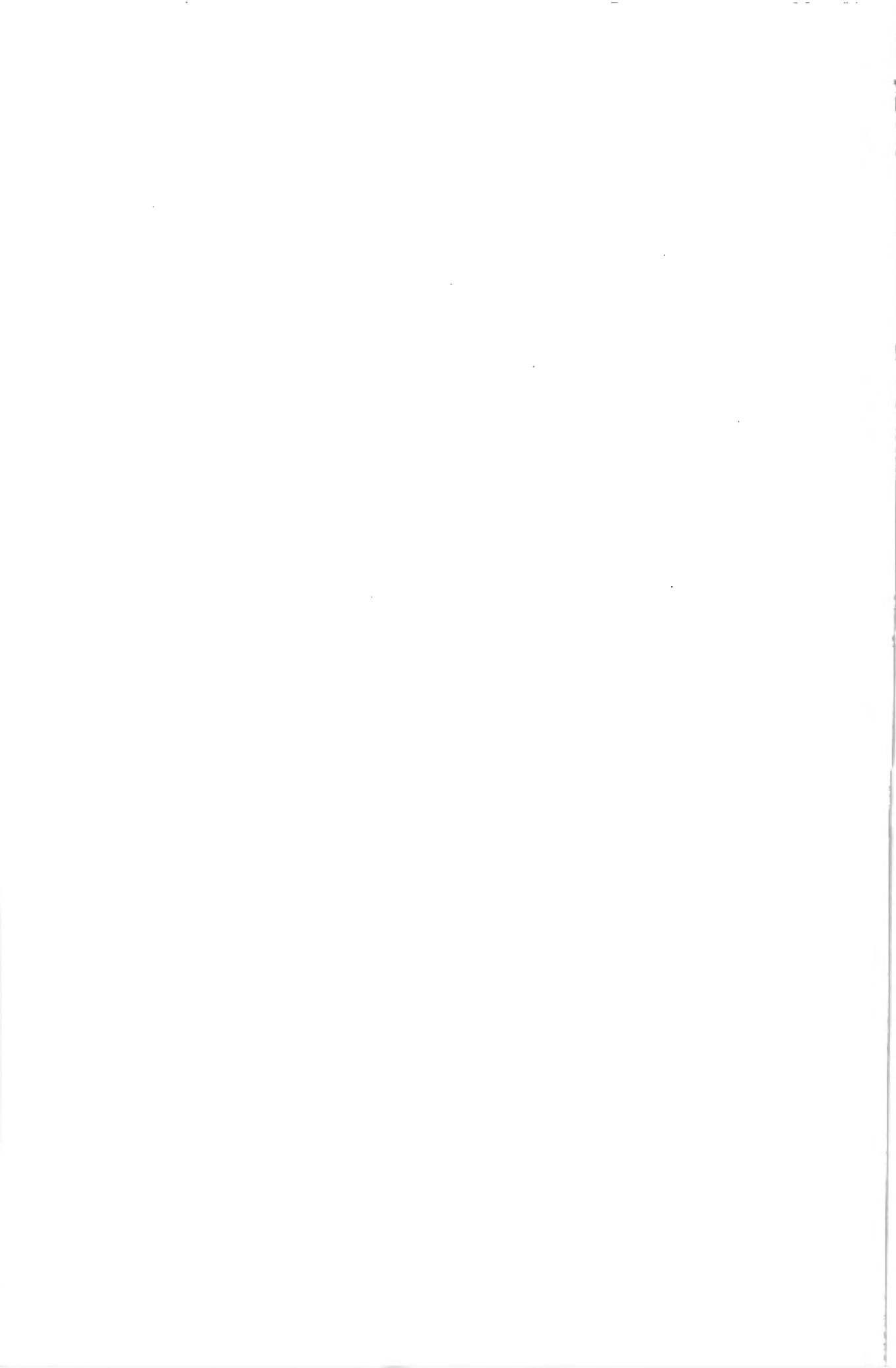




FIG. 18. — *Rhipicephalus* sp. nr. *pravus*. Female genital aperture (mounted).
Specimens furnished by Miss JANE WALKER; collected S. W. Lake Victoria, Tanganyika



FIG. 19. — *Rhipicephalus kochi*. Female genital aperture (mounted).
Specimen from Bushiru, Republic of the Congo.



FIG. 20. — *Rhipicephalus kochi*. Female genital aperture (mounted).
Specimen furnished by Miss JANE WALKER;
laboratory reared from female collected at Nanyuki, Kenya.



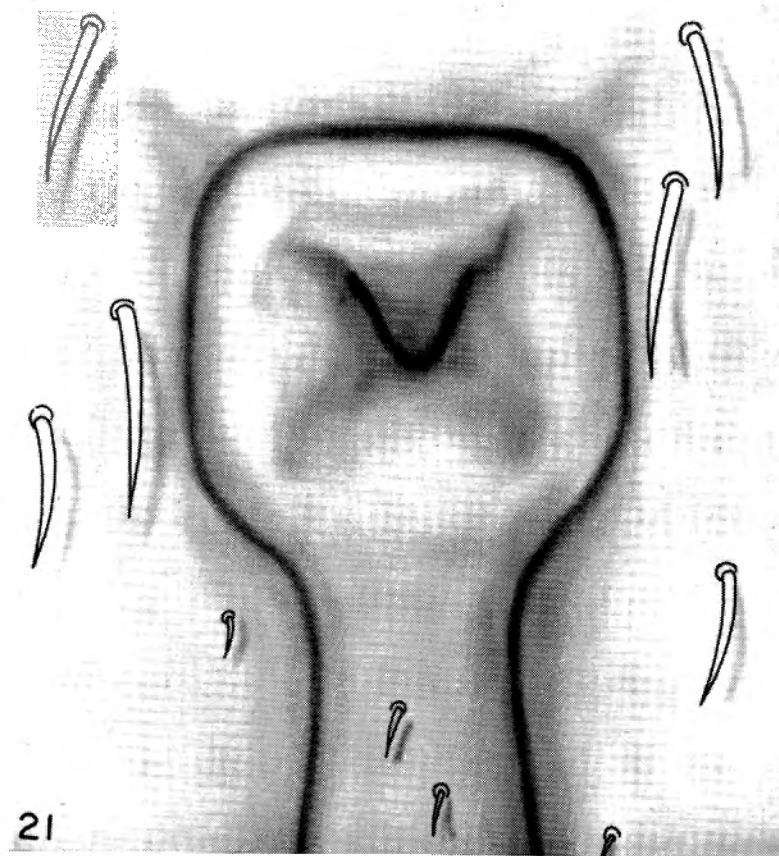
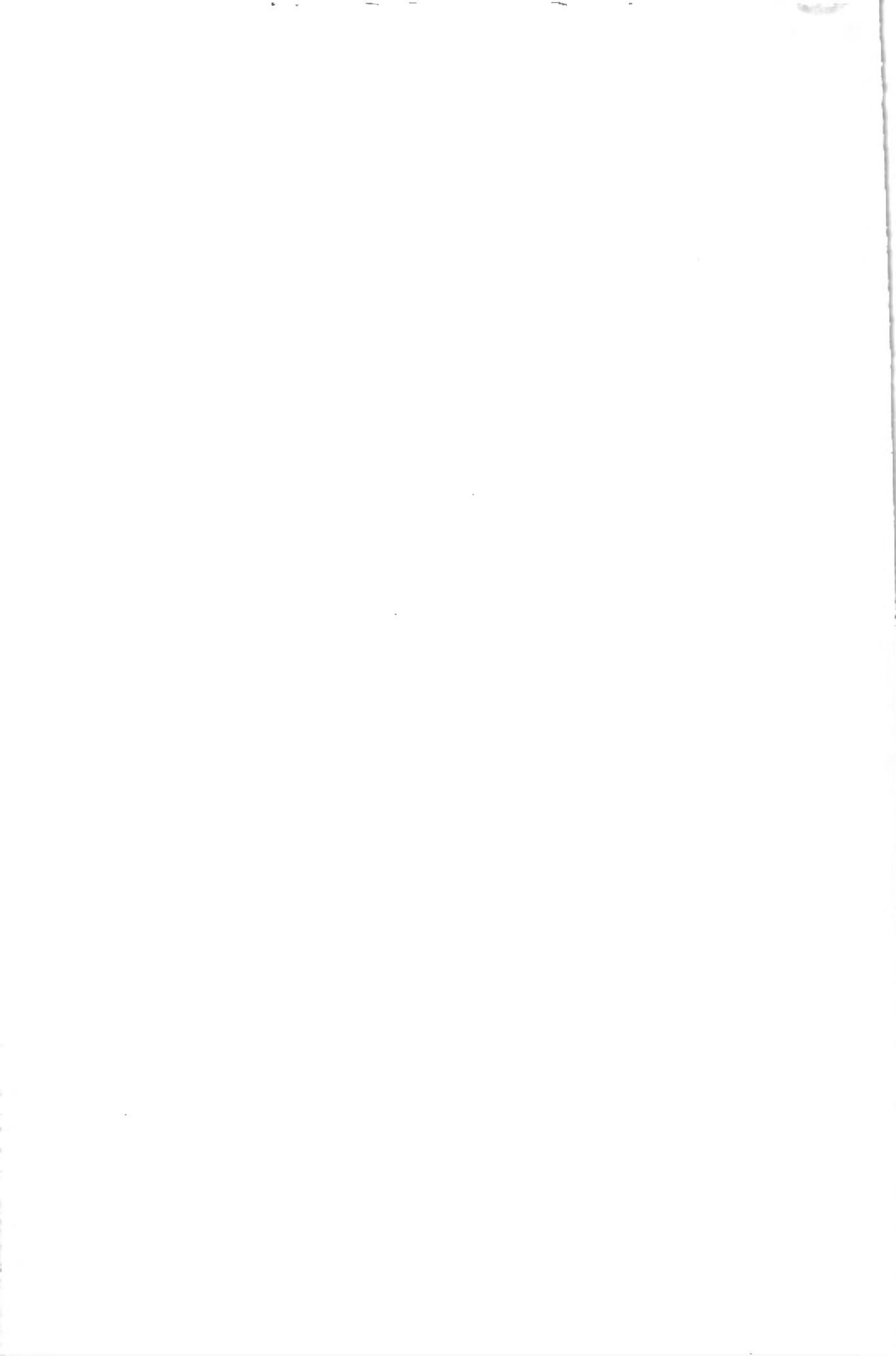


FIG. 21. — *Rhipicephalus kochi*. Female genital aperture (unmounted).
Specimen furnished by Miss JANE WALKER;
laboratory reared from female collected at Nanyuki, Kenya.



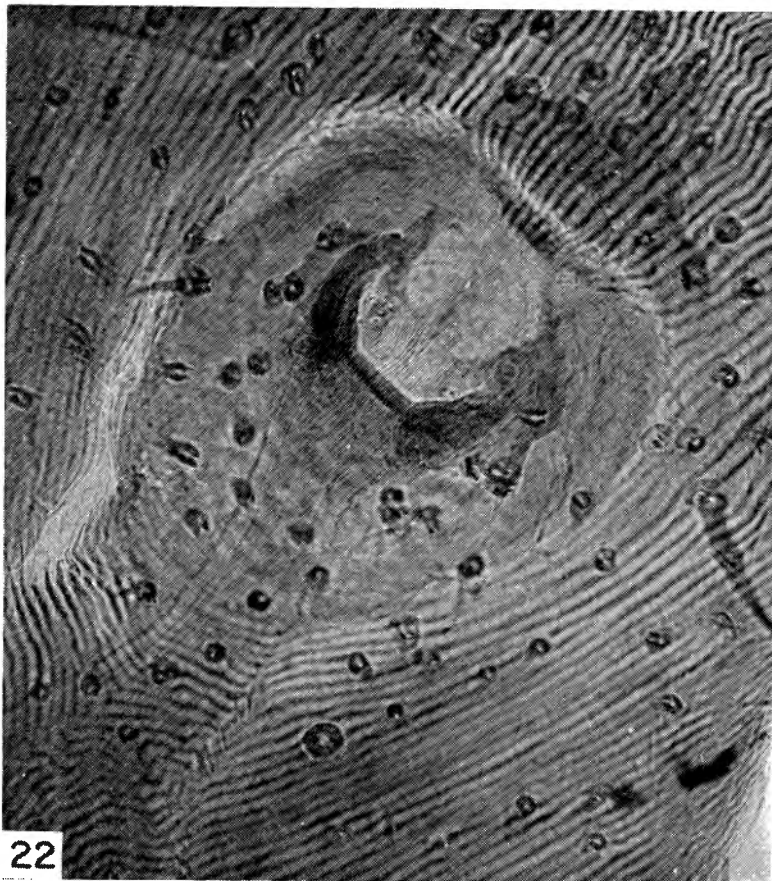


FIG. 22. — *Rhipicephalus hurti*. Female genital aperture (mounted).
Specimen from Kingogo, Republic of the Congo, R.M.L. 27830.

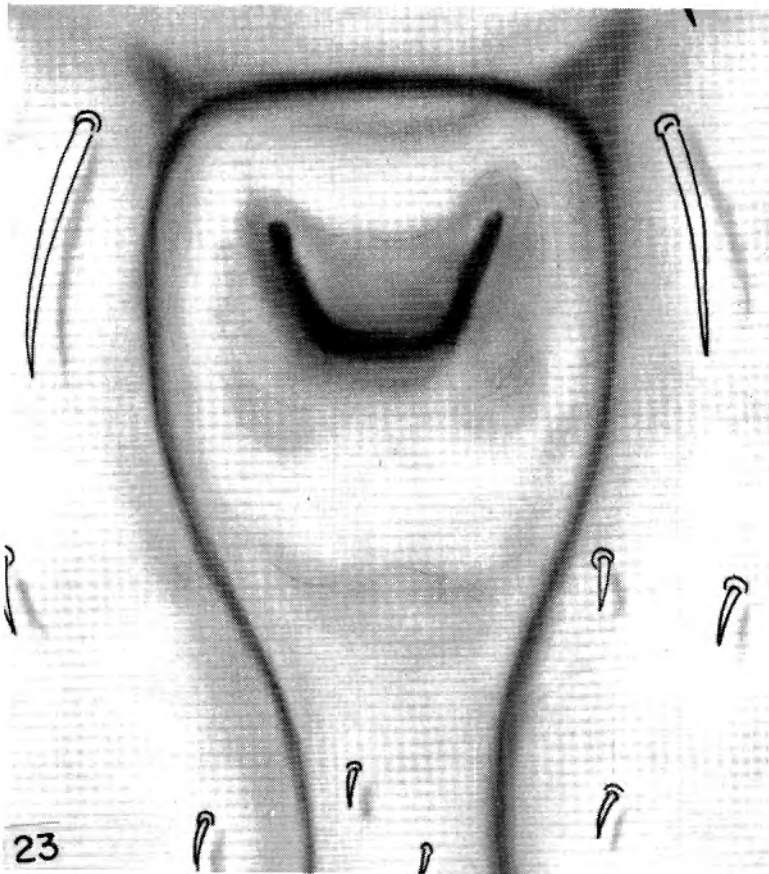


FIG. 23. — *Rhipicephalus hurti*. Female genital aperture (unmounted).
Specimen furnished by Miss JANE WALKER; collected at Nanyuki, Kenya.

