

PARC NATIONAL DE L'UPEMBA
I. MISSION G. F. DE WITTE
en collaboration avec
W. ADAM, A. JANSSENS, L. VAN MEEL
et R. VERHEYEN (1946-1949).
Fascicule 49 (2)

NATIONAAL UPEMBA PARK
I. ZENDING G. F. DE WITTE
met medewerking van
W. ADAM, A. JANSSENS, L. VAN MEEL
en R. VERHEYEN (1946-1949).
Aflevering 49 (2)

NOTOXUS, ANTHICUS AND TOMODERES (COLEOPTERA, HETEROMERA)

Fam. ANTHICIDAE (1)

BY

FREDERICK D. BUCK (London)

The material collected by M. G. F. DE WITTE and his collaborators in the « Parc National de l'Upemba » comprises 10 species of *Notoxus*, 6 species of *Anthicus* and a single species of *Tomoderes*, of which 9 are new to science. There are also 5 species of *Notoxus* which are not assignable to any species known to the author and which being unique, have been left undescribed for the time being.

The types of the species described herein will be returned to the « Institut des Parcs Nationaux du Congo Belge », some of the paratypes will be incorporated in the collection of the British Museum (Nat. Hist.), London and where possible a paratype will be retained in the collection of the author.

***Notoxus guttulatus* n. sp.**

Elongate, shining, black; pronotum, 4 maculae on the elytra and appendages testaceous; pubescent; ventral surface pubescent.

Head testaceous, shining, about as broad as long; widest at eyes which are moderately convex and coarsely faceted; evenly rounded from eyes to

(1) Unless otherwise mentioned, all specimens recorded in this paper were collected by Mission G. F. DE WITTE.

All the localities between [] are without the Park's boundaries.

base without trace of basal angles; contracted in an almost straight line to narrow clypeus; vertex depressed, rugose; palpi testaceous; antennae testaceous, elongate, reaching a little beyond base of pronotum, segment 1 stout, 2 and 3 sub-equal about as long as 1, 4-10 obconic, becoming progressively shorter, 10 about as long as wide, 11 pointed, elongate.

Pronotum testaceous, shining, globular, horn stout, slightly shorter than the pronotum, rounded at sides and pointed at apex, side margin coarsely crenulate, apical margin explanate, tuberculate with a crenulate crest; basal margin of pronotum with a transverse furrow; clothed with diffuse pale pubescence, except basal angles where the pubescence is very thick, with long outstanding setae at the sides, puncturation extremely fine and diffuse.

Scutellum testaceous, shining, triangular.

Elytra elongate, more than twice as long as wide at humeri, gently widening in an almost straight line to just behind the middle, where it is equivalent to about half the length, and then evenly rounded to apices, which are individually rounded; black, each elytron with a large testaceous, rounded sub-humeral macula extending from the lateral margin across disc almost to the suture, and another transverse sub-apical macula arising obliquely from the lateral margin and reaching the suture, also testaceous; apex of elytra piceo-testaceous; elytra slightly depressed just inside humeri and across elytra sub-basally so that humeri themselves are prominent and there is a broad obsolete prominence just behind the scutellum; moderately closely and strongly punctate, the punctures becoming evanescent apically; pubescence pale yellow and somewhat close with scattered elongate setae towards the sides.

Ventral surface testaceous, shining and finely pubescent. Legs slender and testaceous.

Holotype : [♀, Mwendwa, N.W. Rhodesia, 27°40' E., 13° S., 17.III.1914 (H. C. DOLLMAN)] (British Museum).

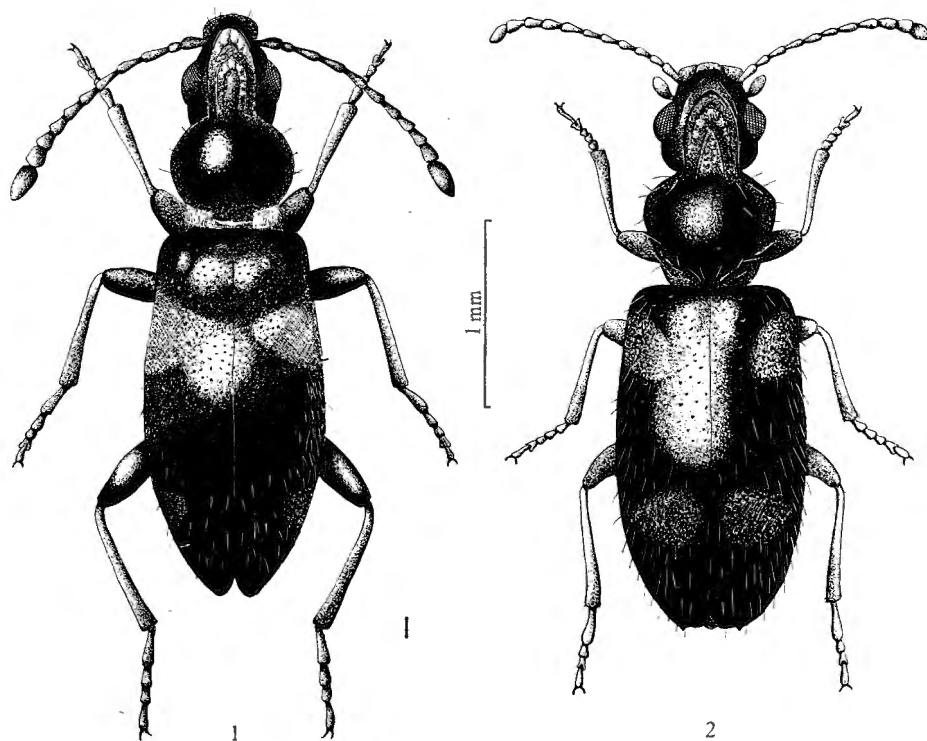
Paratypes : [Ujiji, Tanganyika, 15-17.VIII.1931 (Mrs. OGILVIE)]; [Albertville, Belgian Congo, IX.1931 (Miss A. MACKIE)]; [Elizabethville, Belgian Congo, 1928 (Dr. H. S. EVANS)]; Upemba National Park : Mabwe, lac Upemba, 585 m, 4.IX.1947.

The species resembles *N. cucullatus* LAFERTÉ from which it differs in its weaker puncturation, its testaceous head and pronotum, its shorter pubescence and more rounded apices of the elytra. Also the antennae and legs of *N. guttulatus* are more slender. The type and four paratypes are in the general collection of the British Museum (Nat. Hist.) and with the exception of the type, each carry a label « *Notoxus guttulatus* KRECK., *i.l. det.* R. F. HEBERDEY ». No reference can be found to the species and Dr. JANCZYK of the Vienna Museum says the species is neither in the HEBERDEY nor VON KRECKICH collections. Therefore presumably the description was never published and in consequence the insect is here described as new under the same name.

***Notoxus alternans* n. sp.**

(Figs. 1 and 7.)

Elongate, shining, black, pronotum piceus, appendages lighter, each elytron with two testaceous to piceus maculae, puncturation moderately strong and close on elytra, variable and diffuse on pronotum, sparsely clothed with white setae.

FIG. 1. — *Notoxus alternans* n. sp.FIG. 2. — *Notoxus tropicalis* n. sp.

Head black, elongate-ovate, shining, depressed on vertex, depression bordered laterally by a fine irregular carina which is convergent and evanescent apically, strongly contracted in front of eyes to clypeus and evenly, arcuately, rounded to a broad neck behind, hind angles absent; eyes moderately large, moderately prominent and moderately faceted; antennae robust and elongate, extending beyond the base of the pronotum, testaceous, segments 5-10 slightly darker, pubescent, segment 1 elongate and stout, 2 shorter than 1 and 3, 3-5 elongate, slender and sub-equal, 6-10 obconic, becoming progressively shorter and broader, 11 elongate-ovate.

Pronotum globular, piceus, horn lighter at apex, shining, diffusely punctate with punctures of varying size and strength, with long, dark outstanding setae; at base on either side thickly clothed with fine white pubescence, centre of base with fine transverse furrow; thoracic horn elongate, sub-parallel, as long as pronotum, with broad margin, tuberculate, finely and rugosely on raised median area, coarsely and obsolete in the margin.

Scutellum minute.

Elytra elongate, twice as long as broad; black with two triangular sub-humeral maculae and two ante-apical maculae, testaceous or piceus; humeri prominent, sides slightly widened to middle and thence gently rounded to apices which are individually rounded, transversely depressed in an arc behind the humeri, strongly and moderately closely punctate, with sparse, long, white outstanding setae.

Ventral surface piceus to testaceous, finely and diffusely punctured, shining. Legs slender, femora piceus, tibiae testaceous, darker at the apices, tarsi testaceous. Aedeagus characteristic (fig. 7).

Length : 3,25 mm.

Holotype ♂ : Kabwe s/Muye, affl. dr. Lufira, 1.320 m, 6-12.V.1948.

Paratypes : 21 sp. : Kabwe s/Muye, affl. dr. Lufira, 1.320 m, 6-12.V.1948; 4 sp. : Buye-Bala, affl. g. Muye, affl. dr. Lufira, 1.750 m, 8-16.IV.1948; [3 sp. : Kenia, affl. dr. Lusinga, 1.585 m, 19.XII.1947]; 6 sp. : Buye-Bala, 1.750 m, 1-7.IV.1948; 10 sp. : Kalumengongo, tête source, affl. dr. Lualaba, 1.780 m, 21.I.1948; 1 sp. : rég. confl. Mubale-Munte, 1.480 m, 13-18.V.1947; 4 sp. : riv. Lufwa, affl. dr. Lufira, 1.700 m, 16.III.1948; 1 sp. : Lubanga, affl. dr. Senze, affl. dr. Lufira, 1.750 m, 5.IV.1948; [1 sp. : Grande Kafwe, affl. dr. Lufwa, 1.780 m, affl. dr. Lufira, 5.III.1948]; 2 sp. : Mukana Lusinga, 1.810 m, 18.III.1948.

In general shape this species approaches *N. griseofasciatus* Pic, but its coloration, markings and pubescence are very different.

***Notoxus abnormis* n. sp.**

(Figs. 3 and 11.)

Elongate, parallel, piceo-flavous, head piceus and pronotum piceo-testaceous, somewhat shining, strongly and closely punctured, clothed with short, fine, flavous pubescence, appendages flavous.

Head piceus, a little longer than broad, flattened on vertex with a small well marked carina starting from just behind the eyes, extending across the base of the eyes and meeting just before the clypeus, strongly and arcuately contracted from the eyes to the clypeus; eyes rather large, moderately faceted; temples parallel, two-thirds of the length of the eye,

basal angles strongly rounded; mandibles and palpi testaceous; antennae testaceous, segment 1 stout, elongate, 2 shorter than 1 or 3, 3-5 elongate, sub-equal, 6-10 obconic, progressively becoming a little shorter, 11 longer and pointed at the apex.

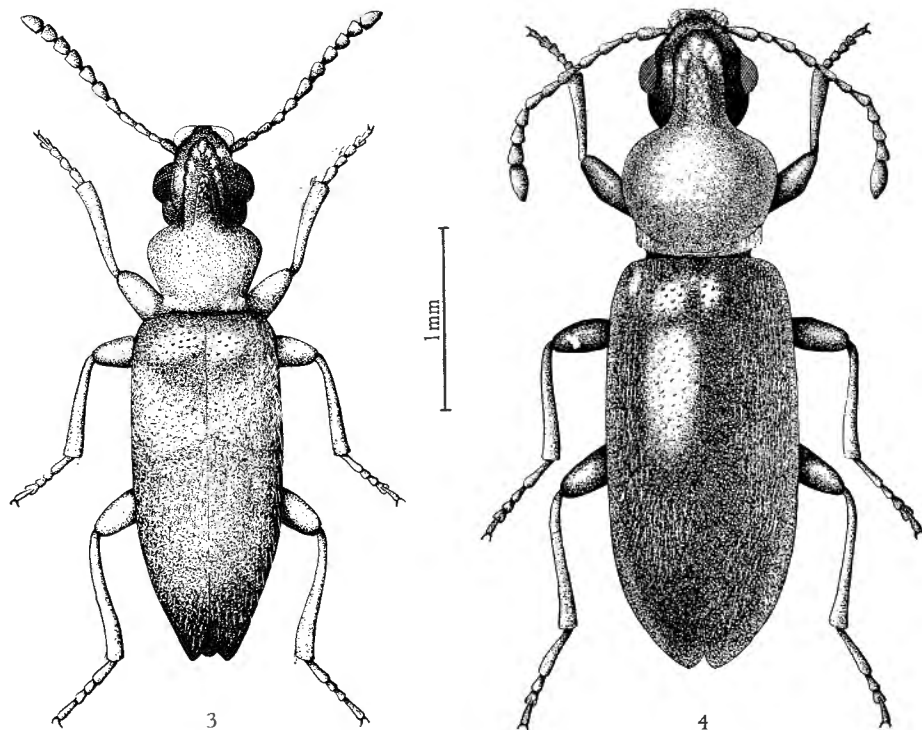


FIG. 3. — *Notoxus abnormis* n. sp.

FIG. 4. — *Notoxus gutenbergi* n. sp.

Pronotum transverse, piceo-testaceous, shining, finely and diffusely punctured, pubescence fine and very short, broadest well in front of middle from whence it is contracted to base in an almost straight line, thickly clothed at base on either side of middle with fine white pubescence, at the centre close to basal margin a deep narrow sulcus, thoracic horn elongate, shining between the tubercles, as long as pronotum, margin coarsely crenulate, raised central part distinctly and finely tuberculate, the explanate margin with very obsolete tubercles, each occupying the entire width of the margin.

Scutellum minute.

Elytra piceo-flavous; with an indistinct sub-humeral band contracted at the suture and broadened at the sides, somewhat lighter; elongate, a little more than twice as long as wide; humeri prominent and rounded; parallel sided for basal two-thirds and thence contracted to an acuminate apex, where the apex of each individual elytron is rounded, shining, less so than pronotum, coarsely and closely punctured, clothed with short, fine, flavous pubescence.

Ventral surface testaceous, shining, last visible segment of abdomen in both sexes strongly excised in the middle, where there is a brush of long castaneous hairs (fig. 11 a), each side of this segment is clothed with long, sparse, flavous pubescence. Legs slender pale testaceous to flavous, femora darker. Aedeagus characteristic (fig. 11 b).

Holotype ♂ : Lusinga, 1.760 m, 7.IV.1947.

Paratypes : 1 sp. : Lusinga, 1.760 m, 12-18.III.1947; 1 sp. : Kalumengongo (tête source), affl. dr. Lualaba, 1.780 m, 21.I.1948.

This species in general facies is perhaps closest to *N. sectator* QUEDENFELDT but differs not only in coloration but in puncturation, pubescence, etc. It is quite possible, owing to the unusual formation of the apical abdominal segment in both sexes, that this species may prove to constitute a new genus, but there is not sufficient material to come to any definite conclusion on this point.

***Notoxus tropicalis* n. sp.**

(Figs. 2 and 9.)

Somewhat elongate, shining, black, elytra with four testaceous maculae, finely and somewhat diffusely punctured, sparsely pubescent and setose.

Head black, quadrate, shining, very finely and very diffusely punctured, eyes moderately large, somewhat prominent and moderately coarsely faceted, evenly rounded in front of eyes to clypeus, temples short a little over half the length of the eyes, hind angles strongly rounded, with long pale setae at the base, vertex flattened, bordered at sides with a fine carina which is convergent anteriorly, almost meeting behind the clypeus, palpi testaceous, antennae piceus, somewhat short, scarcely reaching the base of the pronotum, segment 1 only slightly thickened, 2 a little shorter than 1 and 3, 3-10 becoming progressively stouter, 11 somewhat elongate.

Pronotum black, shining, as wide as broad, broadest in front of middle whence it is evenly rounded to anterior margin, anterior angles absent, contracted to base in an almost straight line, very finely and extremely diffusely punctate, with sparse long setae, at the base at each side of the middle with close fine, pale pubescence; thoracic horn somewhat short, broad, a little shorter than pronotum, side margin not crenulate, raised median area tuberculate, margin simple.

Scutellum minute.

Elytra shining, short and broad, less than twice as long as wide, humeri prominent, rounded, almost parallel sided to just beyond the middle thence evenly rounded to the apex where each elytron has a small tooth, puncturation stronger and closer than on pronotum, very slightly depressed just behind the humeri; a testaceous, sub-humeral macula on each elytron and another sub-median; clothed with very diffuse, pale pubescence and setae.

Ventral surface piceus, obsolete rugose. Legs slender, femora piceus, tibiae and tarsi lighter. Aedeagus characteristic (fig. 9).

Length : 3 mm.

Holotype : Kalumengongo (tête source), affl. dr. Lualaba, 1.780 m, 21.I.1948.

Paratypes : 1 sp. : Mukana-Lusinga, 1.810 m, 15-19.I.1948; [1 sp. : Kenia, 1.700 m, 28.III.1947]; [1 sp. : Kenia, affl. dr. Lusinga, 1.585 m, 19.XII.1947].

This species approaches *N. parallelus* KRECKICH but has a shorter thoracic horn and four maculae, from *N. pilosus* LAFERTÉ it differs in its more parallel sided elytra, broader and less elongate antennae, while *N. cucullatus* LAFERTÉ has a less shining pronotum and elytra.

***Notoxus wittei* n. sp.**

(Figs. 5 and 6.)

Black, shining, elongate, moderately strongly and diffusely punctate, pronotum piceus, elytra with two distinct sub-humeral testaceous maculae and two obscure sub-apical maculae, appendages lighter.

Head black, rugose, slightly elongate, slightly depressed on vertex, bordering carina very fine; eyes moderately large, moderately prominent, and somewhat coarsely faceted; contracted from eyes to clypeus in a gentle arc; and evenly, arcuately rounded to neck; hind angles not traceable; mandibles and palpi testaceous; antennae testaceous, slightly infuscate apically, segment 1 elongate and broad, 2 narrower, shorter than both 1 and 3, 3-8 sub-equal, progressively slightly broader at the apex, 9-10 shorter, 11 longer, acuminate.

Pronotum testaceous, shining, finely and very diffusely punctate with sparse, long, white setae; slightly transverse, broadest a little in front of middle and rounded to apex without traceable apical angles; contracted to base in an almost straight line; at base each side of middle with a tuft of whitish pubescence, sulcate across base close to basal margin; thoracic horn elongate, as long as pronotum, lighter towards the apex, slightly widening to the base, sides simple, tuberculate on raised median area, becoming evanescent apically, margin smooth and shining at apex.

Scutellum small and dull.

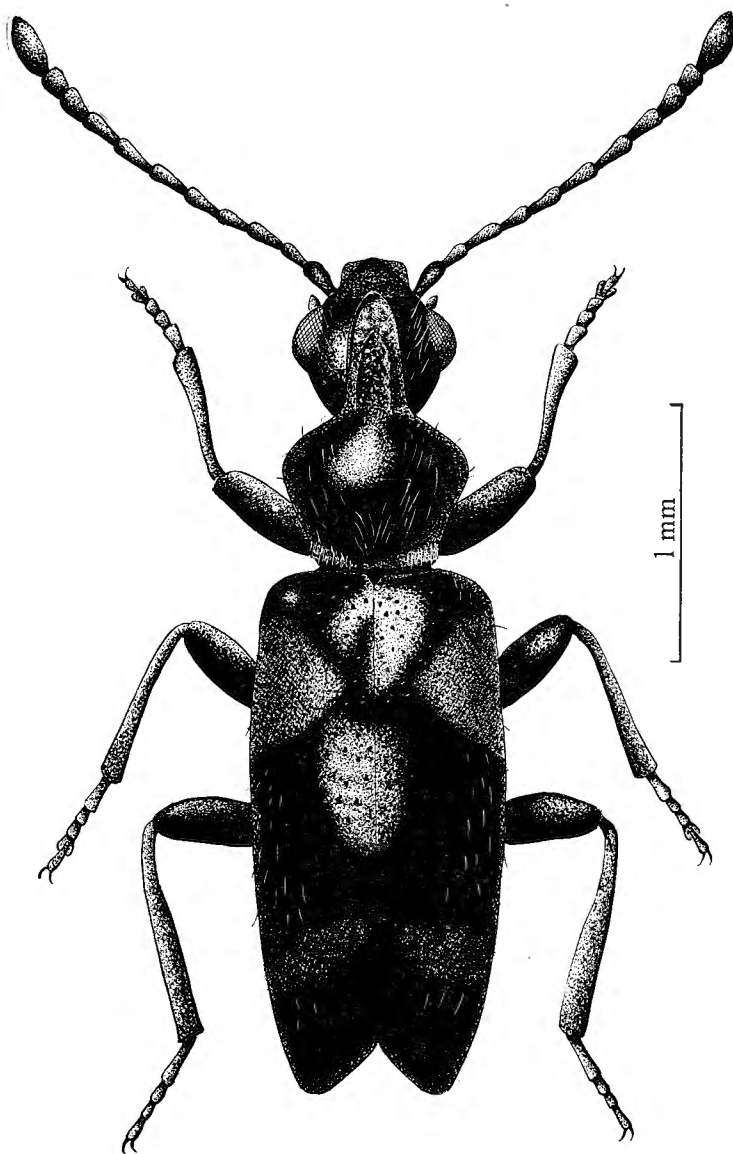
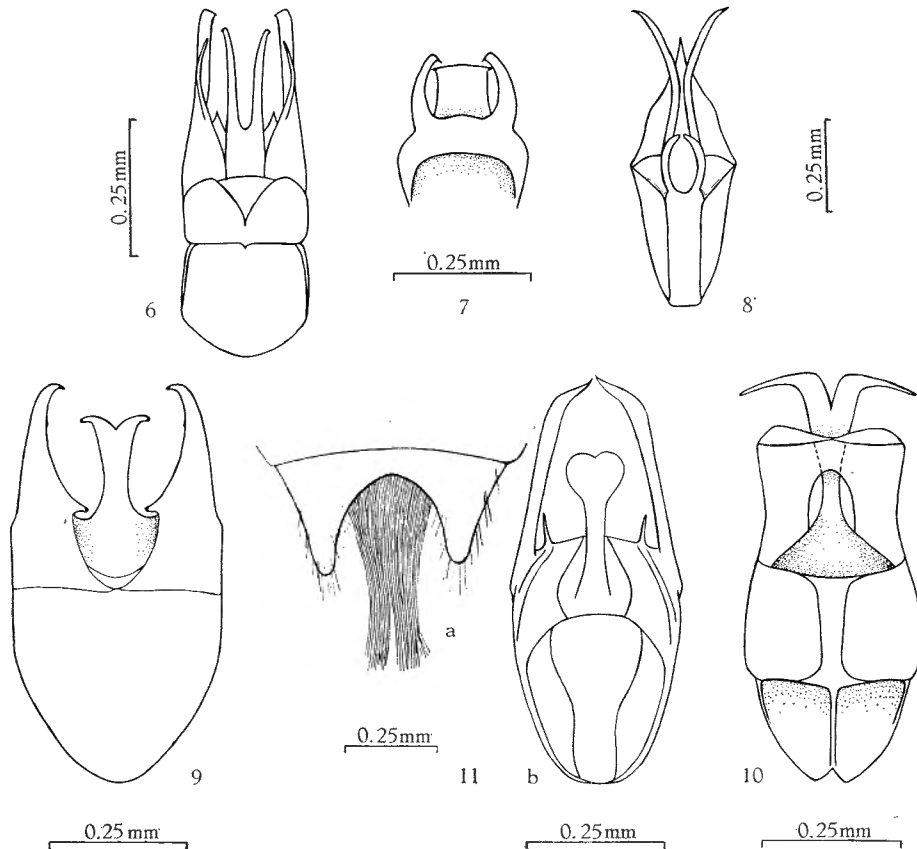


FIG. 5. — *Notoxus wittei* n. sp.

Elytra black to piceus, shining, with two sub-humeral triangular maculae and two obscure sub-apical maculae; twice as long as broad, almost parallel sided, humeri prominent, only slightly contracted to apex where each elytron is individually rounded; the tip of each elytron extended well beyond

the suture; at the base near the suture two raised areas and a broad depression behind; finely and diffusely punctate, with sparse, long, white setae.

Ventral surface testaceous, shining, very finely punctate. Legs slender, femora piceus, tibiae and tarsi flavous. Aedeagus characteristic (fig. 6).



Aedeagus of :

FIG. 6 : *Notoxus wittei* n. sp. — FIG. 7 : *Notoxus alternans* n. sp. — FIG. 8 : *Notoxus niger* n. sp. — FIG. 9 : *Notoxus tropicalis* n. sp. — FIG. 10 : *Notoxus gutenbergi* n. sp.
FIG. 11 : *Notoxus abnormis* n. sp : a, last visible ventral segment; b, aedeagus.

Holotype : Mukana, Lusinga, 1.810 m, 18.III.1948.

Paratypes : 6 sp. : Kalumengongo (tête source), affl. dr. Lualaba, 1.780 m, 21.I.1948; 2 sp. : Kalumengongo, 1.780 m, 16.III.1948; 3 sp. : riv. Lufwa, affl. dr. Lufira, 1.700 m, 16.III.1948; 1 sp. : Lufwa, affl. dr. Lufira, 1.700 m, 16.I.1948; 3 sp. : Mukana, 1.810 m, 18.III.1948; 12 sp. : Mukana-

Lusinga, 1.810 m, 15-19.I.1948; 4 sp. : Lusinga, 1.760 m, 9-17.XII.1947; [2 sp. : Kenia, affl. dr. Lusinga, 1.585 m, 19.XII.1947]; 2 sp. : Buye-Bala, affl. g. Muye, affl. dr. Lufira, 1.750 m, 6-8.IV.1948; 1 sp. : Buye-Bala, 1.750 m, 1-7.IV.1948; [1 sp. : riv. Dipidi (tête source), affl. dr. Lufwa, rég. Lusinga, 1.700 m, 10.I.1948].

This species is very distinct by the divergent apices of the elytra, but perhaps approaches most closely to *N. jeuneli* Pic, differing in the following respects : the more parallel sided elytra, the raised basal areas of the elytra, and the apices.

***Notoxus gutenbergi* n. sp.**

(Figs. 4 and 10.)

Elongate, sub-parallel; piceus, appendages and pronotum lighter; moderately strongly and moderately closely punctured; with fine, rather close, yellowish pubescence.

Head as broad as long, piceus; eyes moderately large and slightly prominent, not coarsely faceted, head in front of eyes sharply contracted to clypeus in an almost straight line, behind evenly rounded to neck without traceable basal angles; vertex concave, shining, with a few coarse, scattered punctures; bordered by a fine carina commencing by ocular margin, and running up to and across base of clypeus; with scattered setae anteriorly; mandibles and palpi lighter; antennae testaceous, reaching base of pronotum, slightly fuscous towards the apex, finely pubescent, segment 1 elongate and broader than next, 2 shorter than 1 and 3, 3-5 sub-equal, 6 onwards becoming shorter and wider apically until 10 is as wide as long, 11 elongate, acuminate.

Pronotum testaceous, globular, shining, a little narrower than elytra, finely and diffusely punctured, with sparse fine yellowish pubescence, at the base either side of the middle clothed with close, fine pale pubescence, close to base a distinct transverse furrow; thoracic horn elongate, crenulate at sides only, raised median portion strongly tuberculate, widely explanate margin obsolete tuberculate.

Scutellum small.

Elytra elongate, twice as long as broad, subparallel; piceus, sometimes with one and sometimes with two obscure maculae on each elytron; shining, moderately strongly and moderately closely punctured; with close, fine, recumbent, yellowish pubescence; humeri prominent, evenly rounded from basal third to apices which are individually rounded, just behind base and close to suture two raised areas.

Ventral surface, testaceous, smooth, shining. Legs slender, testaceous; femora darker, tibiae lighter at apices, tarsi flavous. Aedeagus characteristic (fig. 10).

Holotype : Kalule Nord, rive g. face Mujinga-Kalenge, 1.050 m, 28.II-3.III.1949.

Paratypes : 5 sp. : Kalule Nord, rive g. face Mujinga-Kalenge, 1.050 m, 28.II-3.III.1949; 4 sp. : riv. Bowa, affl. dr. Kalule Nord, près Kiamalwa, 1-3.III.1949; 4 sp. : Kaziba, affl. g. Senze, sous-affl. dr. Lufira, 1.140 m, 10-14.II.1948; 1 sp. : Mukana-Lusinga, 1.810 m, 15-19.I.1948; 1 sp. : Lufwa, affl. dr. Lufira, 1.750 m, 16.I.1948.

This species differs from *N. litigosus* LAFERTÉ in its generally narrower shape and different coloration, also by having a more pronounced post-humeral depression. *N. gutenbergi* has been named in honour of GUTENBERG the German 15th century printer whose invention of moveable type made the dissemination of knowledge by the printed word a commercial proposition.

Notoxus niger n. sp.

(Figs. 8 and 12.)

Black, elongate, parallel, shining, strongly punctured, appendages lighter, with short, fine whitish pubescence.

Head black, shining, with scattered very fine white pubescence; as long as broad, vertex very slightly convex; with a fine carina running from just inside the eyes to the base of the clypeus; eyes moderately large, somewhat prominent, finely faceted; arcuately contracted from eyes to clypeus, temples parallel, a little shorter than eyes, basal angles widely rounded to a broad neck; palpi testaceous, mandibles darker; antennae with basal four segments testaceous rest becoming darker towards black apex, very finely pubescent, segment 1 elongate, stout, 2-6 sub-equal, obconic, 7-10 becoming wider, 11 elongate, acuminate.

Pronotum black, globular, posterior angles hardly traceable; slightly broader than long with scattered, fine, white pubescence, very finely and diffusely punctured, at the base on each side thickly clothed with whitish pubescence, sulcate across base close to basal margin; thoracic horn elongate, a little shorter than pronotum, parallel sided and rounded at apex, sides not noticeably crenulate unless viewed obliquely, explanate margin obsoletely tuberculate; raised median area tuberculate, triangular and bordered with a fine carina, rest of horn rugosely tuberculate.

Scutellum small.

Elytra black, shining, strongly and moderately closely punctured; about twice as long as broad, parallel-sided for basal two-thirds, thence contracted to a somewhat acuminate apex, where each elytron is individually rounded, humeri prominent, clothed with sparse long, whitish pubescence.

Ventral surface piceus, shining. Legs slender, femora piceus, tibiae and tarsi flavous. Aedeagus characteristic (fig. 8).

Holotype : Mukana-Lusinga, 1.810 m, 15-19.I.1948.

Paratypes : 4 sp. : Lufwa, affl. dr. Lufira, 1.700 m, 16.I.1948; 6 sp. : Mukana-Lusinga, 1.810 m, 15-19.I.1948; 1 sp. : same data, 6.III.1948; 1 sp. : Lusinga, 1.760 m, 8.XI.1949; 3 sp. : riv. Lufwa, 1.700 m, 16.I.1948.

N. niger differs from *N. ater* PIC by its narrower more elongate thoracic horn, the shorter antennae and the pronotum being narrower in proportion to the elytra, causing the humeri to be more prominent.

***Notoxus jeanelli* PIC.**

PIC, 1914, Voy. ALLUAUD et JEANNEL, IV, p. 169.

23 sp. : Kabwe s/Muye, affl. dr. Lufira, 1.320 m, 6-12.V.1948; 7 sp. : Buye-Bala, 1.750 m, 8-16.IV.1948; 11 sp. : Buye-Bala, affl. g. Muye, affl. dr. Lufira, 1.750 m, 8-16.IV.1948; 1 sp. : riv. Lufwa, affl. dr. Lufira, 1.700 m, 16.III.1948; [3 sp. : riv. Dipidi, 1.700 m, 22.IV.1947]; 3 sp. : Lusinga, 1.760 m, 20.IV.1947; [1 sp. : Kenia, affl. dr. Lusinga, 1.585 m, 19.XII.1947]; 5 sp. : Mukana-Lusinga, 1.810 m, 15-19.I.1948; 8 sp. : Mukana, 1.810 m, 18.III.1948; 3 sp. : riv. Kampadika, affl. Grande Kafwe, 1.700 m, 22.I.1948; 2 sp. : Lufwa, 1.700 m, 16.III.1948; 6 sp. : Kalumengongo (tête source), affl. dr. Lualaba, 1.780 m, 21.I.1948; 1 sp. : Kabwekanono, 1.815 m, 6.III.1948; 1 sp. : Katongo, affl. g. Mubale, sous-affl. g. Munte, 1.750 m, 1.IV.1948.

***Notoxus antinorii* PIC.**

PIC, 1901, Le Natural., XXIII, p. 228.

1 sp. : Ganza, 860 m, 30.V-10.VI.1949.

***Notoxus neavei* KREKICH.**

KREKICH, 1922, Rev. Zool. Bot. Afr., 10, p. 210.

1 sp. : Lufwa, affl. dr. Lufira, 1.700 m, 16.I.1948.
Determined from description.

***Notoxus guttula* KREKICH.**

1 sp. : Mabwe, lac Upemba, 585 m, 14.IX.1947.

Also amongst this material were five undescribed species of *Notoxus* represented by unique examples.

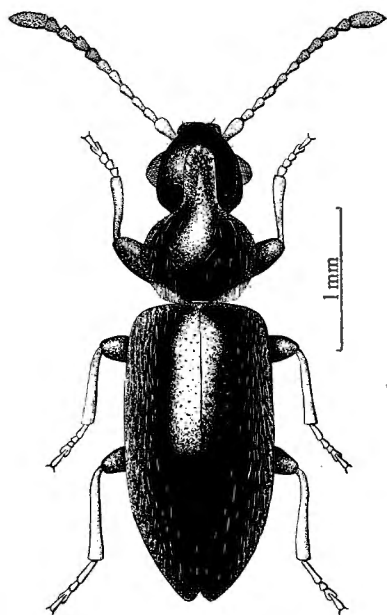
***Anthicus ashbyi* n. sp.**

(Fig. 13.)

Black, appendages lighter; shining, finely and somewhat closely punctured, pubescence white.

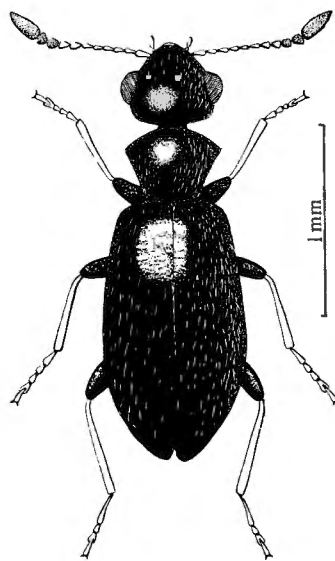
Head black, shining, finely and closely punctured; convex, a little broader than long, widest at base (exclusive of eyes); eyes large and

finely faceted; moderately strongly contracted from eyes to clypeus which is narrow and transverse, hind angles broadly rounded to arcuate base; very finely and diffusely clothed with white pubescence; clypeus, mandibles, palpi and base of antennae testaceous, apical segments of antennae piceus; segment 1 elongate and broad, 2-5 narrower, elongate, obconic, 6-8 about



12

FIG. 12. — *Notoxus niger* n. sp.



13

FIG. 13. — *Anthicus ashbyi* n. sp.

as broad as long, widest apically, 9 broader and longer than 8, 10 transverse, broader than 9, 11 broader and much more elongate than any preceding, acuminate.

Pronotum black, shining, as finely and closely punctured as head; convex, distinctly broader than long, approximately as broad as head with eyes; anterior angles acute, anterior margin strongly arcuate, contracted behind to narrow base in an almost straight line; with large obsolete fovea in the centre at the base; clothed with short, fine, white pubescence.

Scutellum minute.

Elytra black, shining; a little more coarsely and rugosely punctured than the head and pronotum; elongate-ovate, about $1 \frac{3}{4}$ times as long as broad, at humeri much wider than pronotum, humeri prominent and rounded; widened to a little beyond the middle and thence evenly, arcuately rounded to apex; with an almost imperceptible depression on suture sub basally; pubescence moderately close, white.

Ventral surface black and shining. Legs slender, with femora piceus to black, tibiae and tarsi testaceous, intermediate and hind tarsi almost as long as tibiae, anterior shorter.

Length 2 mm.

Holotype : Mukana-Lusinga, 1.810 m, 6.III.1948.

Paratypes : 2 sp. : Kabwekanono, 1.815 m, 6.III.1948; 3 sp. : Mukana-Lusinga, 1.810 m, 6.III.1948; 2 sp. : gorges de la Pelenge, 1.150 m, 31.V.1947; 1 sp. : Lusinga, 1.760 m, 19.III.1947; [1 sp. : Grande Kafwe, affl. dr. Lufwa, 1.780 m, affl. dr. Lufira, 5.III.1948]; [1 sp. : riv. Dipidi, 1.700 m, 9.I.1948].

This species is very near *A. trapezithorax* PIC but differs in having the basal margin of the head more arcuate and consequently the basal angles less prominent, is more shining particularly on the head and pronotum, the elytra are more rounded at the sides, is less strongly and more rugosely punctured, overall it is a little smaller. Both this species and the following are named in honour of the two coleopterists, Mr. S. R. ASHBY and Mr. F. J. COULSON, who encouraged me and maintained my interest in those very early days when the difficulties which beset one seem almost insuperable.

***Anthicus coulsoni* n. sp.**

(Fig. 14.)

Small, piceo-testaceous, appendages lighter, distinctly punctured and with short pale, inconspicuous pubescence.

Head piceus, shining, finely and diffusely punctured; convex, as wide as long (exclusive of eyes) almost globular; eyes large, prominent, finely faceted; rounded from eyes to narrow, transverse, fuscous clypeus, temples short, hind angles broadly rounded, scarcely traceable; mandibles, palpi and antennae flavous, antennal segment 1 elongate, 2-5 shorter, filiform, sub-equal, 6-8 very slightly elongate, 9-10 quadrate, wider, 11 longer and wider than any preceding, acuminate.

Pronotum testaceous, shining, finely punctured about as strongly as head but much closer; convex, about as wide as long, distinctly narrower than the head with eyes; broadest at anterior angles which are acute; anterior margin strongly arcuate, contracted to a narrow base in an almost straight line, with an almost imperceptible depression at base.

Scutellum minute.

Elytra piceo-testaceous, shining; more strongly punctured than head or pronotum, punctures with a tendency to run into rows; convex, ovate, about $1\frac{1}{2}$ - $1\frac{3}{4}$ times as long as broad, much broader than pronotum at humeri which are broadly rounded, widest at middle and evenly rounded to apex; pubescence fine, pale, short, only noticeable at sides, with an occasional more elongate seta.

Ventral surface darker; legs moderately short, flavous, tarsi shorter than tibiae.

Length : 1,75 mm.

Holotype : Lusinga, 1.760 m, 9-17.XII.1947.

Paratypes : 1 sp. : Lusinga, 1.760 m, 1-8.XII.1947; 1 sp. : Lusinga, 1.760 m, 3.III.1947.

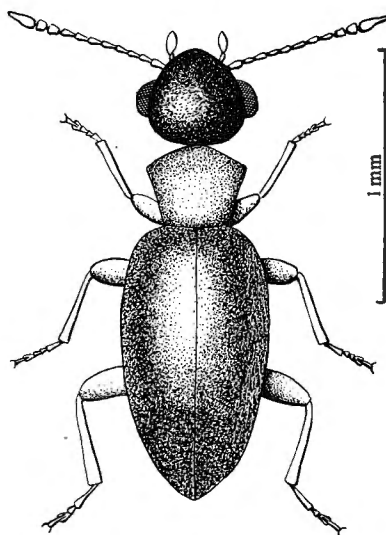


FIG. 14. — *Anthicus coulsoni* n. sp.

A very distinct species, in size and general facies closest to *A. scydmaenoides* WOLLASTON from the Canaries; quite apart from its different coloration the head of *A. coulsoni* is more transverse than that of *A. scydmaenoides*, the elytra is less distinctly punctured and the antennae have the apical segments less elongate.

***Anthicus trapezithorax* PIC.**

PIC, 1899, Bull. Mus. Paris, V, p. 31.

In spite of the fact that this insect is a Madagascan species, the author cannot see any significant differences between those specimens in the general collection of the British Museum (Nat. Hist.) and the specimen collected by the expedition to Upemba National Park.

1 sp. : Lusinga, 1.760 m, 9-17.XII.1947.

Anthicus bottegoi PIC.

PIC, 1895, Ann. Mus. Genova, (2), XV, p. 231.

1 sp. : Kaswabilenga, 700 m, 3-4.XI.1947; 5 sp. : riv. Lukawe, affl. dr. Lufira, 700 m, 22.X.1947; 2 sp. : Mabwe, rive Est lac Upemba, 585 m, 1-15.VIII.1947.

Anthicus gestroi PIC.

PIC, 1895, Ann. Mus. Genova, (2), XV, p. 231.

1 sp. : Kabwe s/Muye, affl. dr. Lufira, 1.320 m, 6-12.V.1948.

Anthicus usambarensis PIC.

PIC, 1908, Échange, XXIV, p. 27.

1 sp. : Lusinga, 1.760 m, 22.III.1947; 1 sp. : riv. Mboto, affl. Lusinga, 9.VII.1945.

Tomoderes tschoffeni PIC.

PIC, 1900, Ann. Soc. Ent. Belge, XLIV, p. 428.

2 sp. : Buye-Bala, 1.750 m, 25-31.III.1948; 1 sp. : Lusinga, 1.750 m, 1-8.XII.1947.

INDEX
ARRANGED ALPHABETICALLY.

SPECIES.

	Pages.		Pages.
<i>abnormis</i> nov. (<i>Notoxus</i>)	8	<i>jeanelli</i> PIC (<i>Notoxus</i>)	16
<i>alternans</i> nov. (<i>Notoxus</i>)	7	<i>neavei</i> KREKICH (<i>Notoxus</i>)	16
<i>antinorii</i> PIC (<i>Notoxus</i>)	16	<i>niger</i> nov. (<i>Notoxus</i>)	15
<i>ashbyi</i> nov. (<i>Anthicus</i>)	16	<i>trapezithorax</i> PIC (<i>Anthicus</i>)	19
<i>bottegoi</i> PIC (<i>Anthicus</i>)	20	<i>tropicalis</i> nov. (<i>Notoxus</i>)	10
<i>coulsoni</i> nov. (<i>Anthicus</i>)	18	<i>tschoffeni</i> PIC (<i>Tomoderes</i>)	20
<i>gestroi</i> PIC (<i>Anthicus</i>)	20	<i>usambarensis</i> PIC (<i>Anthicus</i>)	20
<i>guttenbergi</i> nov. (<i>Notoxus</i>)	14	<i>wittei</i> nov. (<i>Notoxus</i>)	11
<i>guttula</i> KREKICH (<i>Notoxus</i>)	16		
<i>guttulatus</i> nov. (<i>Notoxus</i>)	5		

