

PARC NATIONAL DE L'UPEMBA
I. MISSION G. F. DE WITTE

en collaboration avec
W. ADAM, A. JANSSENS, L. VAN MEEL
et R. VERHEYEN (1946-1949).

Fascicule 35 (6)

NATIONAAL UPEMBA PARK
I. ZENDING G. F. DE WITTE

met medewerking van
W. ADAM, A. JANSSENS, L. VAN MEEL
en R. VERHEYEN (1946-1949).

Aflevering 35 (6)

CHIRONOMIDÆ (DIPTERA NEMATOCERA)

BY

PAUL FREEMAN (London).

The insects dealt with in this Report were studied in conjunction with the much larger collections from the « Parc National Albert ». The collection from the « Parc National de l'Upemba » contains 18 species placed in 9 genera and only three of these species were not also present in the P.N.A. collections.

I have written a report on the P.N.A. collections and given some account of the genera and notes on the species. I am, therefore, largely confining myself to listing the species in the present Report. If further information is required, reference should be made to my Report on the P.N.A. collections, where are to be found the figures of the genitalia of *Chironomus nostrifer* and *Nilodorum brevibuca*.

I should like to express my thanks to the President of the « Institut des Parcs Nationaux du Congo Belge » for the opportunity of studying this collection.

All the localities indicated between [] are outside the Park's boundaries.

Tanypus brevivalpis KIEFFER.

Protenthes brevivalpis KIEFFER, 1923, Ann. Soc. Ent. Fr., **92** : 187.

Mission G. F. DE WITTE : Mabwe (lac Upemba), 585 m, 15.VIII.1947,
6 ♂, 12 ♀.

Clinotanypus niligenus KIEFFER.

Clinotanypus niligenus KIEFFER, 1923, Ann. Soc. ent. Fr., **92** : 186.

Mission G. F. DE WITTE : Mabwe (lac Upemba), 585 m, 1-12.VIII.1947,
74 ♂, 15 ♀.

Clinotanypus maculatus n. sp.

A yellow insect with 10 small black spots on the thorax forming a circle round the prescutellar area. Easily separated from *C. niligenus* by the thoracic pattern and by the stronger and darker thoracic bristles.

Female : Wing length 2,75 mm.

Head and antennæ yellow, antennæ 14-segmented. Mouthparts slightly browner, palpi well developed, eyes kidney-shaped. Thorax yellow, bristles numerous, strong and dark brown, contrasting with yellow cuticle. There are 10 small, round, black spots arranged as follows : 4 in an arc across the middle of the mesonotum, 1 above each wing base, 1 at each lateral angle of the scutellum and two close together at the apex of the scutellum. Seen from above the spots are in a circle enclosing the prescutellar area of the mesonotum. Legs yellow with dark bristles; apices of tibiæ and basitarsi blackened, segments 3-5 of tarsi black, 2 dark on front leg only. Wings hyaline, cross-vein dark, costa produced, stem of posterior fork twice as long as free portion of base of M_{3+4} (this is cross-vein m-cu of authors). Abdomen yellow, without dark markings.

Holotype female : Mission G. F. DE WITTE : Mabwe (lac Upemba), 585 m, 1-12.VIII.1947.

Procladius umbrosus GOETGHEBUER.

Trichotanypus umbrosus GOETGHEBUER, 1935, Rev. Zool. Bot. Afr., **27** : 356.

Mission G. F. DE WITTE : Mabwe (lac Upemba), 585 m, 1-15.VIII.1947, 6 ♂.

Pentaneura tricolor GOETGHEBUER.

Ablabesmyia tricolor GOETGHEBUER, 1935, Rev. Zool. Bot. Afr., **27** : 363.

Mission G. F. DE WITTE : Mabwe (rive Est lac Upemba), 15.VIII.1947, 1 ♀.

Chironomus (Chironomus) nivalis FREEMAN.

Chironomus nivalis FREEMAN, 1954, Proc. R. ent. Soc. Lond., (B), **23** : 17.

Mission G. F. DE WITTE : Mabwe (lac Upemba), 1-12.VIII.1947, 1 ♀; riv. Munte, 1.480 m, 16.V.1947, 1 ♂.

Chironomus (Chironomus) brunneus FREEMAN.

Chironomus brunneus FREEMAN, 1954, Proc. R. ent. Soc. Lond., (B), **23** : 18.

Mission G. F. DE WITTE : Mabwe (lac Upemba), 585 m, 1-12.VIII.1947, 2 ♀.

Chironomus (Chironomus) nairobii KIEFFER.

Chironomus nairobii KIEFFER, 1913, Voy. ALLUAUD et JEANNEL Afr. Or., Ins. Dipt., 1 : 19.

Mission G. F. DE WITTE : Kamitungulu, 1.700 m, 3.IV.1947, 1 ♀; Lusinga, 1.760 m, 3.VII.1947, 3 ♀; Mabwe (lac Upemba), 585 m, 1-12.VIII.1947, 3 ♂, 1 ♀.

Chironomus (Chironomus) bellus GOETGHEBUER.

Chironomus bellus GOETGHEBUER, 1936, Rev. Zool. Bot. Afr., 28 : 471.

Mission G. F. DE WITTE : Lusinga, 7-21.IV.1947, 4 ♂.

Chironomus (Einfeldia) palustris KIEFFER.

Chironomus palustris KIEFFER, 1913, Voy. ALLUAUD et JEANNEL Afr. Or., Ins. Dipt., 1 : 16.

Mission G. F. DE WITTE : Mabwe (lac Upemba), 585 m, 1-12.VIII.1947, 1 ♀.

Chironomus (Einfeldia) rostrifer n. sp.

A large pale brown species without any conspicuous markings. A.R. 5, L.R. 1,8, frontal tubercles present, male hypopygium with distinctive appendage 1.

Male : Wing length 5 mm.

Head, mouthparts, antennæ and plumes brown; A.R. about 5, frontal tubercles present. Thorax slightly pruinose with greenish brown background; mesonotal stripes, which are separate, sternopleuron and apical half of postnotum reddish brown. Legs yellowish brown, tarsal segments darkened at apices, L.R. 1,8, anterior tarsus without beard. Wings clear, cross vein slightly darkened. Halteres with dark knobs. Abdomen greenish brown, darker apically, segments 2-4 with indications of a central darker spot. Hypopygium (fig. 2 a in P.N.A. Report) with stout, downcurved anal point, narrow styles which are slightly constricted in apical half and normal appendage 2; appendage 1 with a basal stout hairy part and a subapical long bare process.

Female : Quite similar to male but femora darkened at apices and abdomen darker. Antennal segments 1-5 with well developed necks, segment 6 as long as the two preceding together.

Holotype male and 828 paratypes including both sexes, Mission G. F. DE WITTE, P.N.U., Mabwe (lac Upemba), 585 m, 1-15.VIII.1947.

This species occurs also in « Parc National Albert ».

I have not made the P.N.A. specimens paratypes because they are smaller (wing length 3-4 mm); structurally they are not to be distinguished from the type series.

Chironomus (Xenochironomus) ? ugandæ GOETGHEBUER.

Chironomus ugandæ GOETGHEBUER, 1936, Rev. Zool. Bot. Afr., **28** : 468.

Mission G. F. DE WITTE : riv. Karibwe (affl. Lusinga), 1.700 m, 8-10.III.1947, 1 ♂.

Nilodorum brevibucca KIEFFER.

Nilodorum brevibucca KIEFFER, 1922, Ann. Soc. ent. Fr., **91** : 45.

Mission G. F. DE WITTE : Mabwe (rive Est lac Upemba), 585 m, 15.VIII.1947, 3 ♂.

Nilodorum dewulfi GOETGHEBUER.

Nilodorum dewulfi GOETGHEBUER, 1934, Rev. Zool. Bot. Afr., **25** : 196.

Mission G. F. DE WITTE : Mabwe (lac Upemba), 585 m, 1-12.VIII.1947, 13 ♂, 3 ♀.

Nilodorum elongatum n. sp.

A comparatively small dark species with hypopygial structure not unlike *dewulfi*, but appendage 2 is more elongate and narrower. Separable from both *brevibucca* and *dewulfi* by its longer palpi and darker colour. The dark knees suggest a resemblance to *nigritarse* GOETGHEBUER, a species described from the female only, but it can be distinguished by the longer palpi.

Male : Wing length 2,75-3 mm.

Head brown; A.R. about 4, palpi rather longer than is usual in the genus, segment 2 about five times as long as broad, segments 3 and 4 subequal to it. Thorax grey pruinose, pronotum more reduced than in *Chironomus* sens. str., divided but reaching to the front. Legs pale brown, knees rather darker, anterior tibiæ may be blackish on basal half and at apex, L.R. 1,4, anterior tarsi with short beard only. Wings hyaline, R_{2+3} rather close to R_1 , posterior fork slightly distal to cross vein, squama fringed. Halteres pale. Abdomen brown with paler incisures. Hypopygium (fig. 2b in P.N.A. Report) with well developed anal point, appendage 1 slightly sinuous, enlarged apically and down turned, appendage 2 longer and narrower than in *dewulfi*.

Female : Generally similar to the male, abdomen darker and unbanded, legs more distinctly marked with black at the knees and apices of the tibiae.

Holotype male and paratypes 133 ♂, 35 ♀, P.N.U., Mission G. F. DE WITTE, Mabwe (lac Upemba), 585 m, 1-15.VIII.1947.

Paratypes from Parc National Albert :

Mission G. F. DE WITTE : Vitshumbi (lac Édouard), 27.IX-8.X.1933, 7 ♂.

Collection L. LIPPENS : Sud lac Édouard, Vitshumbi, 15.IV.1936, 1 ♂.

***Stenochironomus atroconus* n. sp.**

A fairly large species, easily distinguished from all the other described African species by the black mesonotal cone; anterior legs black except for basal half of femur, wings plain.

Female : Wing length 4 mm.

Head, mouthparts and antennae yellow, palpi brown; antennae 6-segmented, segments 3-5 with long necks equal to basal bulbous portion, segment 6 one and a half times as long as 5, whorls formed of long hairs. Thorax yellow, mesonotum strongly produced into a blackened shining cone over the head, blackening does not extend back as far as wings. Bristles long, acrostichals biserial, dorso-centrals uniserial and rather widely spaced. Legs mainly yellow, front pair black, femora yellow on basal half, middle and posterior tarsi black on segment 5 in holotype, with four segments dark in paratype. Front femur and tibia equal in length; L.R. 1,3, front legs 2,1 times as long as body, pulvilli well developed. Wings unmarked, R_{2+3} closely applied to R_1 at apex, posterior fork slightly distal to cross-vein. Halteres yellow. Abdomen shining, yellow with darkening on some basal segments, in holotype segments 1-2 brown, in paratype segments 2-3.

Holotype female : [Belgian Congo : Elisabethville, 17-31.XII.1932 (CH. SEYDEL)], in the British Museum (Nat. Hist.); paratype, 1 ♀, P.N.U. : Mission G. F. DE WITTE, Lukawe (affl. dr. Lufira), 700 m, 6-9.X.1947.

***Stenochironomus* spp. indet.**

Mission G. F. DE WITTE : Lukawe, affl. dr. Lufira, 700 m, 22.X.1947, 1 ♂; Lusinga, 1.760 m, 12-17.XII.1947, 1 ♂.

These two specimens belonging to different species are too broken for description.

***Polypedilum scotti* FREEMAN.**

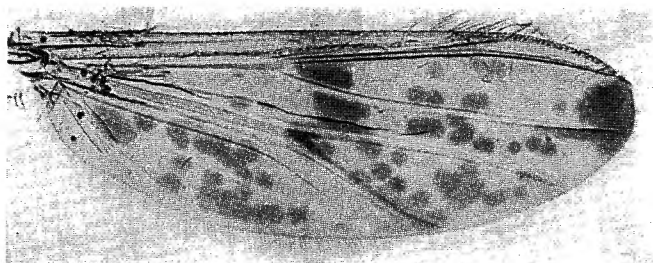
Polypedilum scotti FREEMAN, 1954, Proc. R. ent. Soc. Lond., (B), 23 : 21.

Mission G. F. DE WITTE : Kaswabilenga, 700 m, 3-8.XI.1947, 1 ♂.

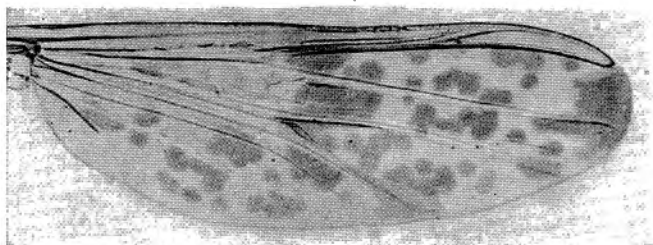
Microtendipes lentiginosus n. sp.

(FIG. 1, 2.)

There are only two specimens, both female, of this species available, with rather different arrangement of wing spots. As the markings are so distinctive and quite unlike those of any other known African species, I am placing them provisionally in the same species. Further specimens may show that the markings are not variable and that there are two species.



1



2

FIG. 1 and 2. — Wings of *Microtendipes lentiginosus* n. sp.
1. Wing of holotype; 2. Wing of paratype.

Female : Wing length 2.2,3 mm.

Head brown, mouthparts and palpi brown, antennæ yellow, probably 6-segmented, segments 3-5 elongate fusiform, 6 brown, one and a half times as long as 5. Thorax brown, shoulders and prescutellar area pale, acrostichal bristles present only at the front; prothorax greatly reduced, mesonotum produced and cone-shaped. Legs quite similar to *M. rutshuruensis*; femora with a dark band near the middle, knees broadly darkened, apices of tibiæ broadly dark, all tarsi broken on holotype, in paratype

segments 1-4 broadly dark at apex, basitarsus not dark centrally. Anterior tibia without spur, posterior tibia with a single spur, L.R. about 1,3, basitarsus of posterior leg equal to tibia, pulvilli absent or very small. Wings (fig. 1-2) with very characteristic markings of circular spots; the two specimens differ considerably in the arrangement and may represent different species, but the two wings of the same specimen show differences. Halteres white. Abdomen brown, posterior margin of tergites pale, cerci pale.

Holotype female : Mission G. F. DE WITTE : piste Lupiala, 900-1.200 m, 23.X.1947.

Paratype 1 ♀ : [Kenya, Mumias District, Kavirondo, 3.IX.1911 (C. N. WOODHOUSE)], in British Museum (Nat. Hist.).

INDEX ARRANGED ALPHABETICALLY.

	Pages.		Pages.
<i>atroconus</i> nov. (<i>Stenochironomus</i>) ...	99	<i>nairobii</i> (<i>Chironomus</i>)	97
<i>bellus</i> (<i>Chironomus</i>)	97	<i>niligenus</i> (<i>Clinotanypus</i>)	95
<i>brevibucca</i> (<i>Nilodorum</i>)	98	<i>nivalis</i> (<i>Chironomus</i>)	96
<i>brevipalpis</i> (<i>Tanypus</i>)	95	<i>palustris</i> [<i>Chironomus</i> (<i>Einfeldia</i>)] ...	97
<i>brunneus</i> (<i>Chironomus</i>)	96	<i>rostrifer</i> nov. [<i>Chironomus</i> (<i>Einfeldia</i>)]	97
<i>dewulfi</i> (<i>Nilodorum</i>)	98	<i>scotti</i> (<i>Polypedilum</i>)	99
<i>elongatum</i> nov. (<i>Nilodorum</i>)	98	<i>tricolor</i> (<i>Pentaneura</i>)	96
<i>lentiginosus</i> nov. (<i>Microtendipes</i>) ...	100	<i>ugandæ</i> [<i>Chironomus</i> (<i>Xenochironomus</i>)]	98
<i>maculatus</i> nov. (<i>Clinotanypus</i>) ...	96	<i>umbrosus</i> (<i>Procladius</i>).	96