

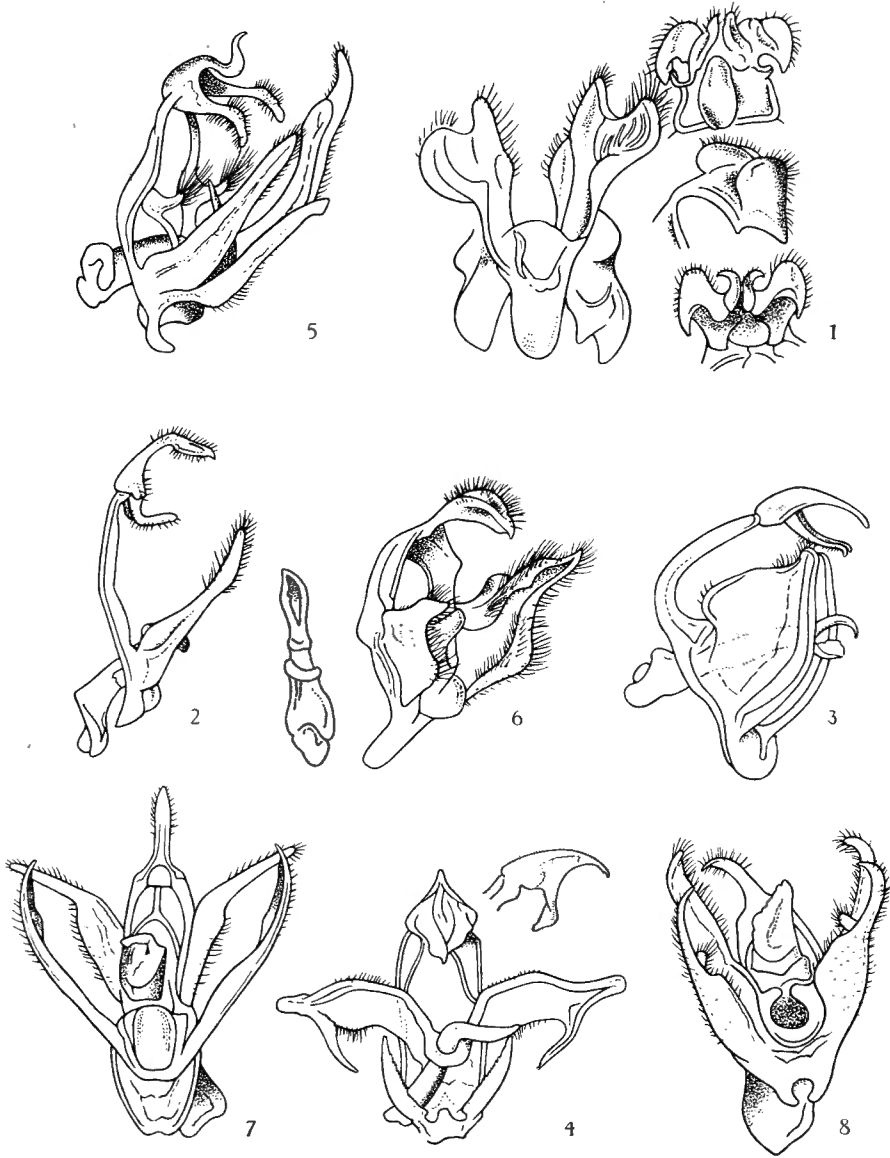
PLANCHE I

## LÉGENDE DE LA PLANCHE I.

---

### Armures génitales ♂.

- FIG. 1. — *Pygæra leloupi* sp. nov., vue ventrale,  $\times 22$ ; uncus, vue dorsale, latérale et ventrale.
- FIG. 2. — *Notoxantha wilteana* sp. nov., vue latérale,  $\times 13$ .
- FIG. 3. — *N. sesamioides* HAMPSON, vue latérale,  $\times 32$ .
- FIG. 4. — *Polienus lusingæ* sp. nov., vue ventrale,  $\times 14$ ; uncus, vue latérale (paratype).
- FIG. 5. — *Pydna indecora* sp. nov., vue latérale,  $\times 13$ .
- FIG. 6. — *Metarctia (Ænarctia) upembæ* sp. nov., vue latérale; édéage;  $\times 10$ .
- FIG. 7. — *Aglossosia pallidula* sp. nov., vue ventrale,  $\times 23$ .
- FIG. 8. — *Ædaleosia sordidula* sp. nov., vue ventrale,  $\times 36$ .
-



LEPIDOPTERA HETEROCERA



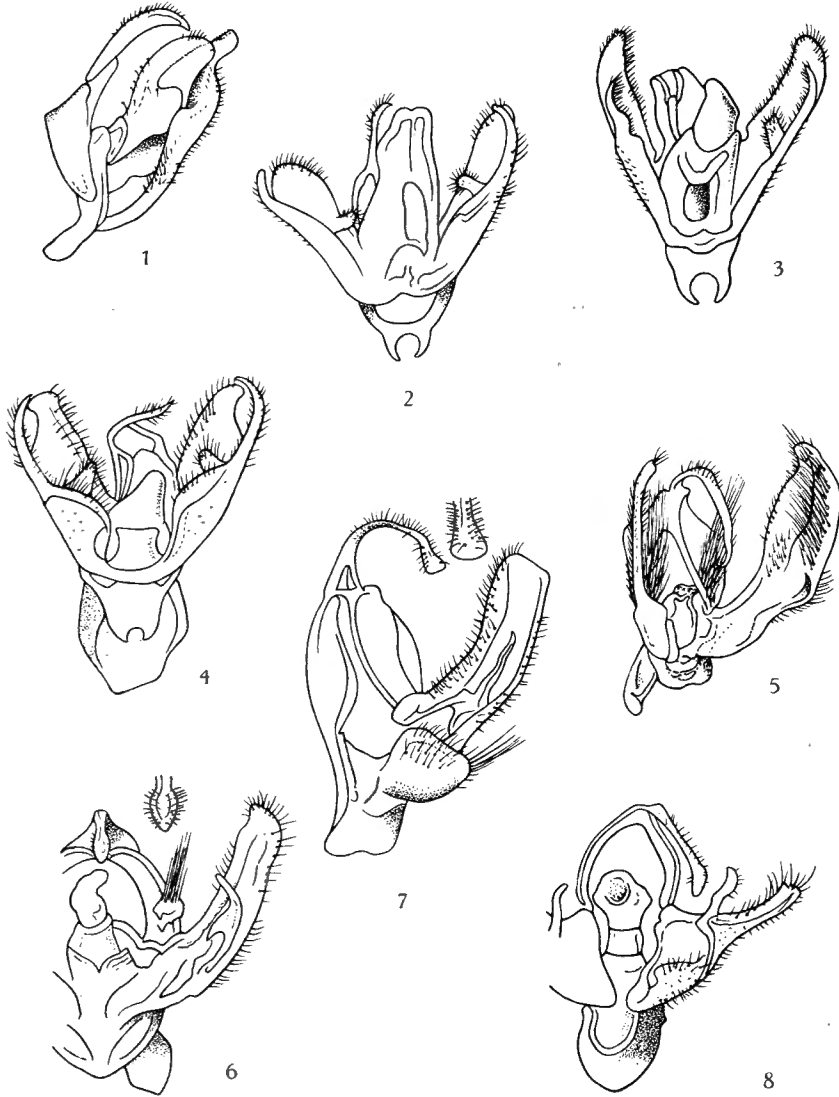
PLANCHE II

## LÉGENDE DE LA PLANCHE II.

---

### Armures génitales ♂.

- FIG. 1. — *Eilema danieli* sp. nov., vue latérale, ×15 (paratype).  
FIG. 2. — *Ctenosia jageli* sp. nov., vue ventrale, ×36 (paratype).  
FIG. 3. — *Ctenosia roscidella* sp. nov., vue ventrale, ×45.  
FIG. 4. — *Ctenosia rotundula* sp. nov., vue ventrale, ×29.  
FIG. 5. — *Pais straeleniana* sp. nov., vue ventrale-latérale, ×13.  
FIG. 6. — *Timæa janmoulei* sp. nov., vue ventrale, ×12; extrémité de l'uncus, vue dorsale.  
FIG. 7. — *Matopo tamsi* sp. nov., vue ventrale-latérale, ×34; extrémité de l'uncus, vue dorsale.  
FIG. 8. — *Ethiopica subpurpurea* sp. nov., vue ventrale, ×28.
-



LEPIDOPTERA HETEROCERA

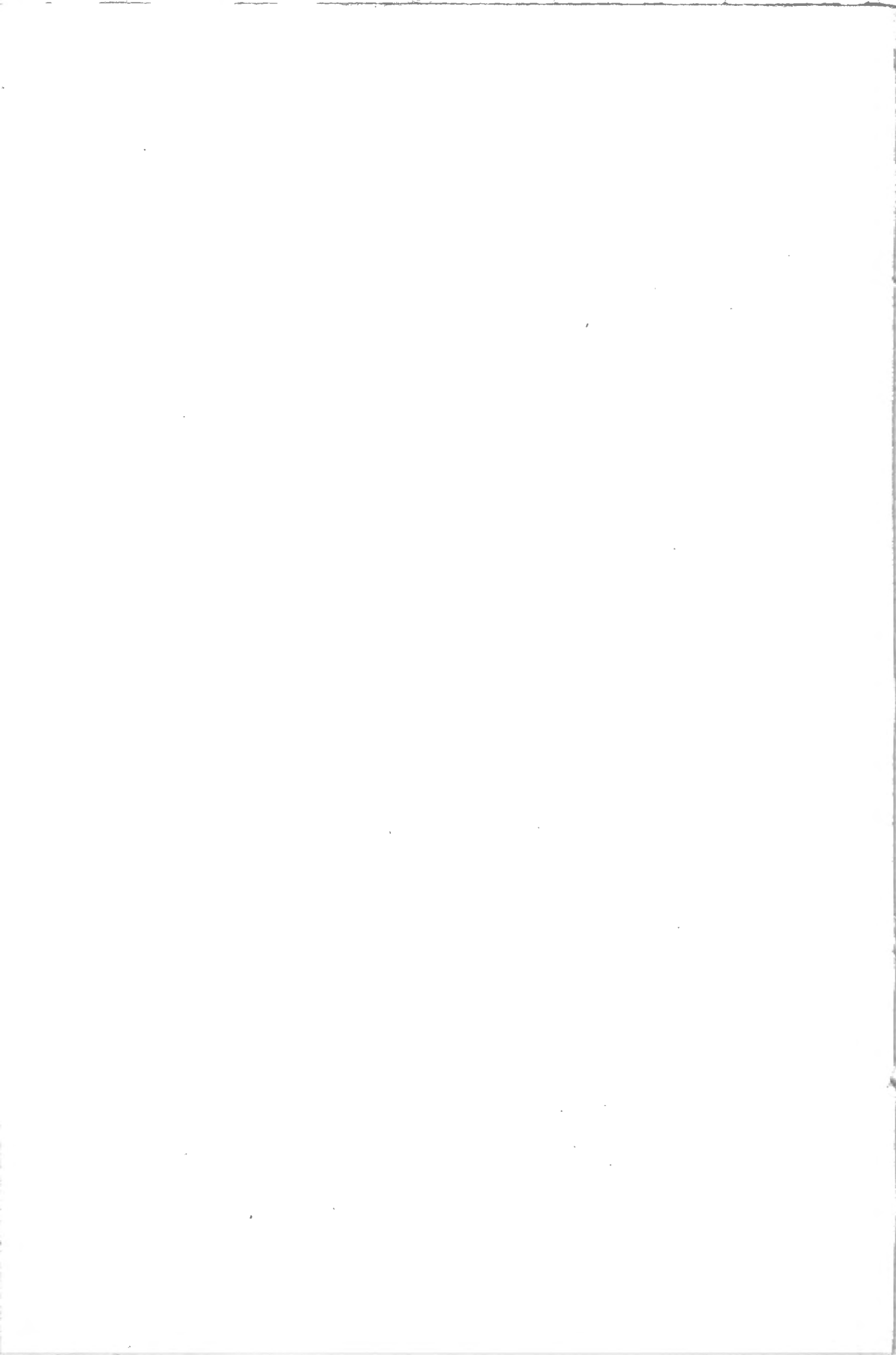
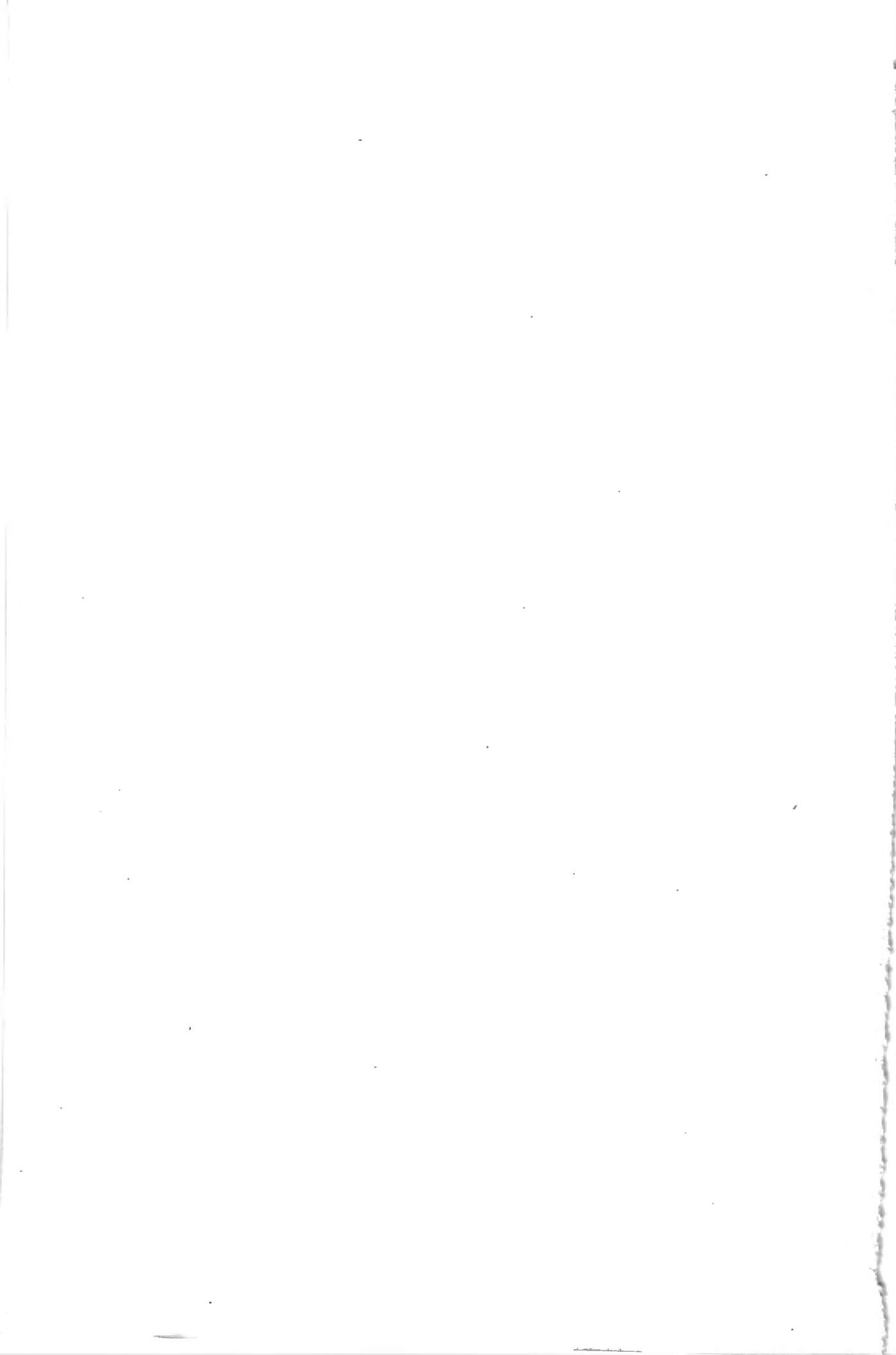
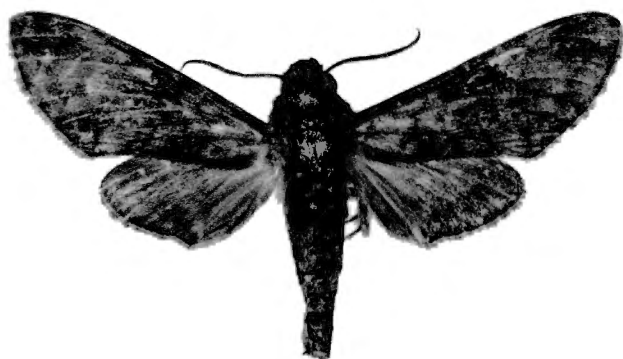




PLANCHE III





1



2

1. *Prædora marshalli meridionalis* subsp. nov. -
2. *Metarctia (Oenarctia) upembæ* sp. nov.  
(au double de la grandeur naturelle).

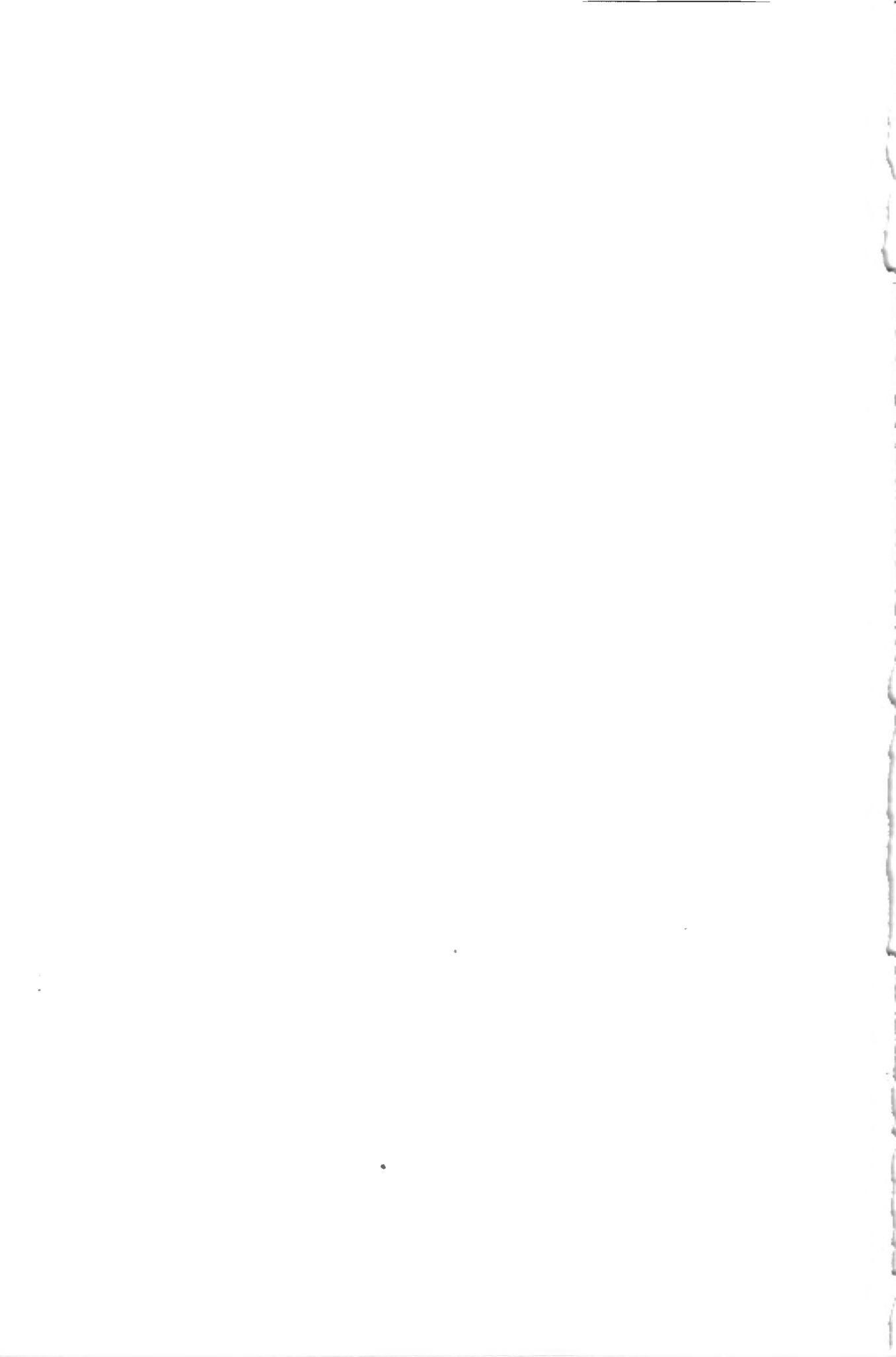


PLANCHE IV

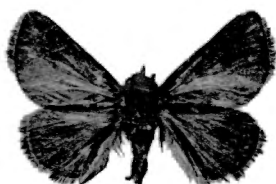




1



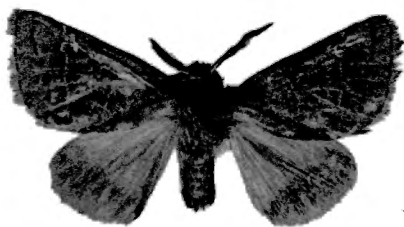
2



3



4



5



6

1. *Birthama saturata* sp. nov. - 2. *Phorma limbata* sp. nov. -  
3. *Phorma subericolor* sp. nov. - 4. *Eilema danieli* sp. nov.  
5. *Pygæra leloupi* sp. nov. - 6. *Polienus ochraceus orientalis*  
subsp. nov.

(au double de la grandeur naturelle).

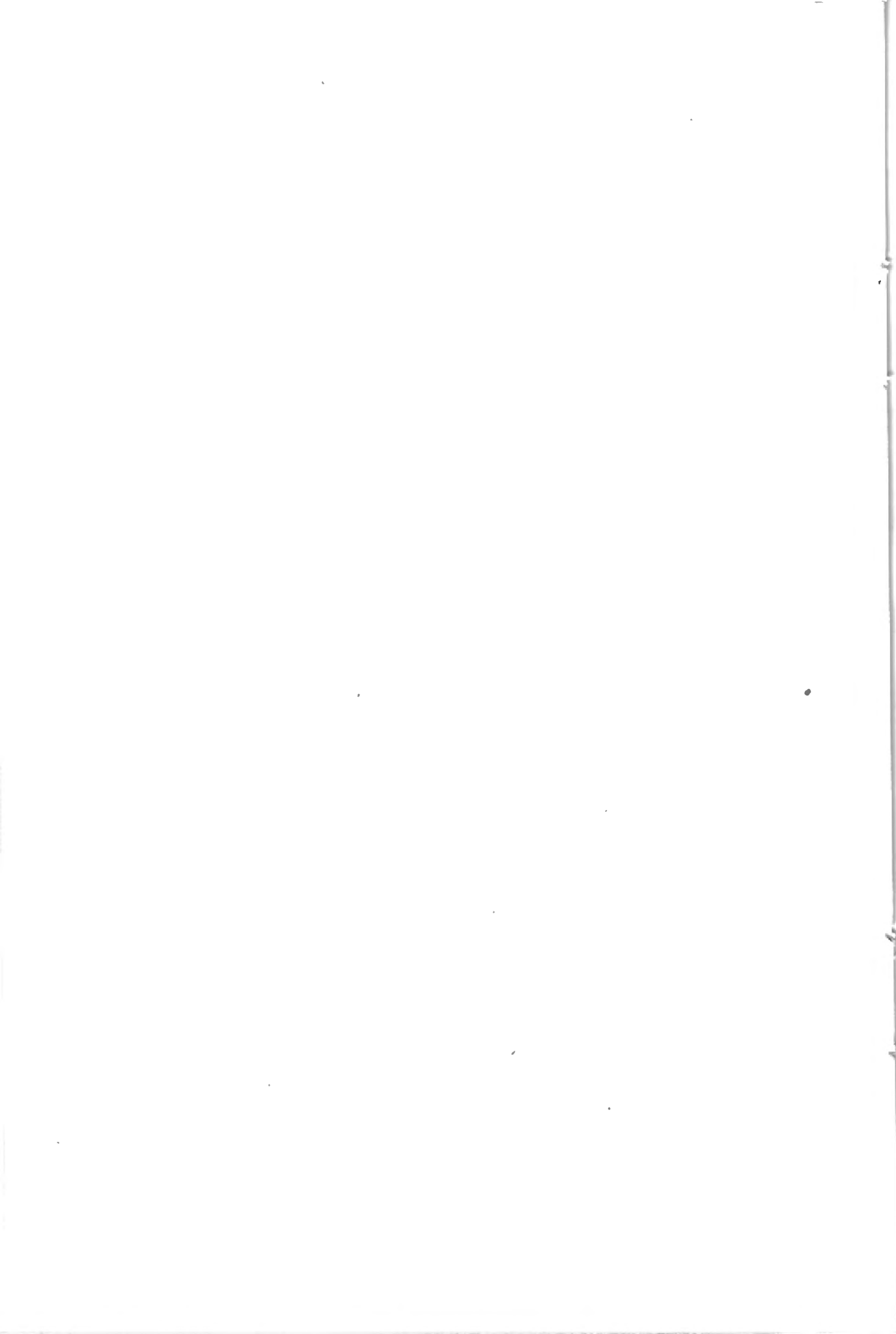
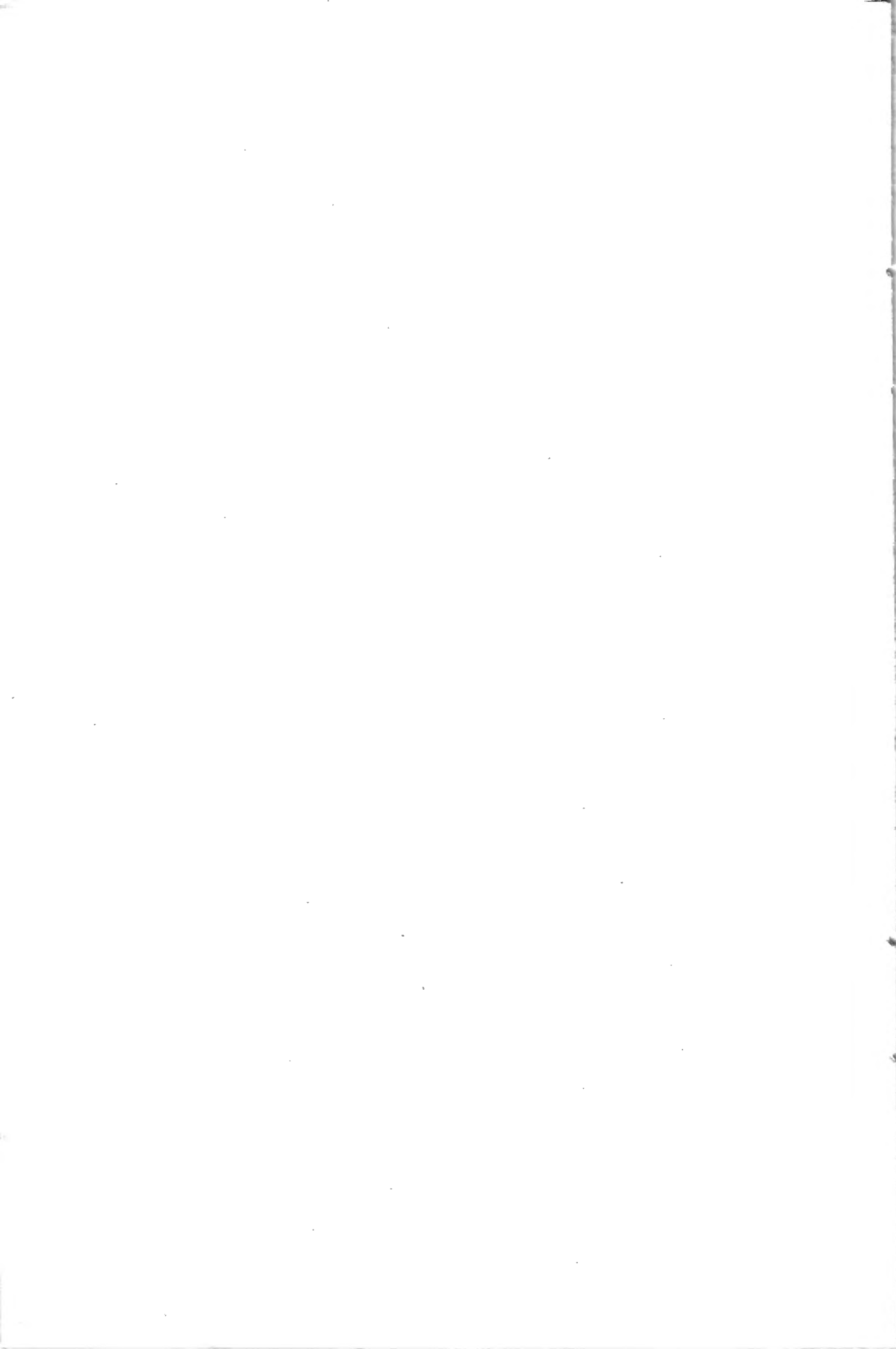
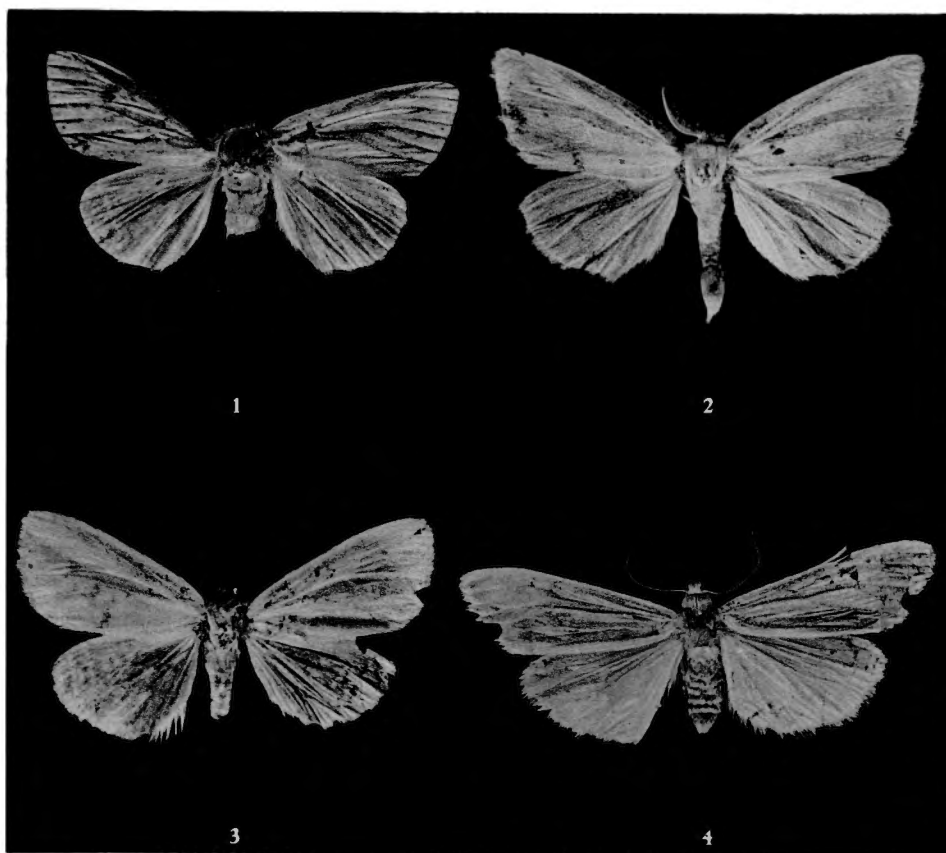




PLANCHE V





1. *Notoxantha witteana* sp. nov. - 2. *Polienus lusingæ* sp. nov.  
3. *Pydna indecora* sp. nov. - 4. *Caripodia janssensi* sp. nov.  
(au double de la grandeur naturelle).

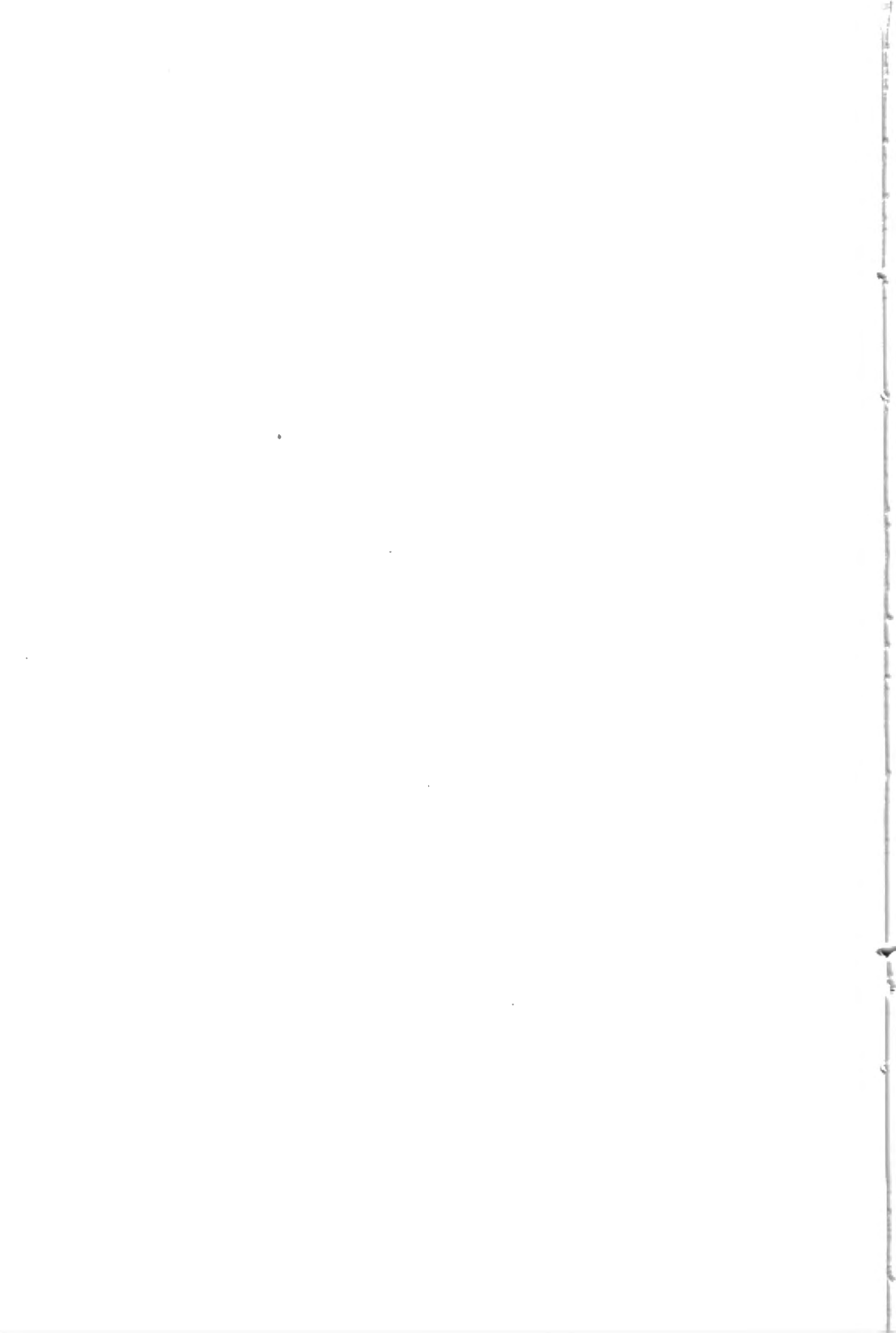
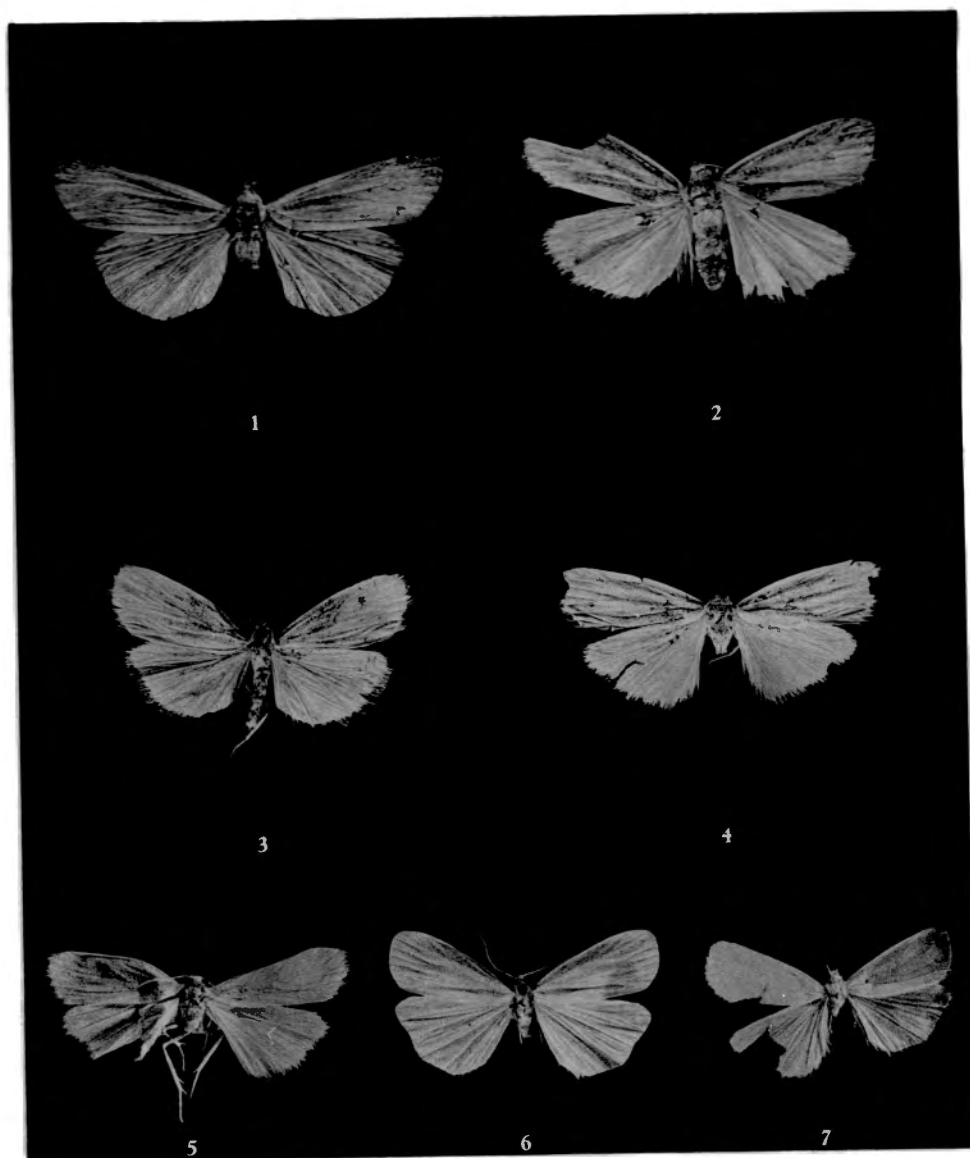


PLANCHE VI





1. *Aglossosia pallidula* sp. nov. - 2. *Pseudlepista unicolor* sp. nov.  
3. *Ctenosia fageli* sp. nov. - 4. *Phryganopsis brunneitincta* sp.  
nov. - 5. *Oedaleosia sordidula* sp. nov. - 6. *Ctenosia roscidella*  
sp. nov. - 7. *Ctenosia rotundula* sp. nov.

(au double de la grandeur naturelle).

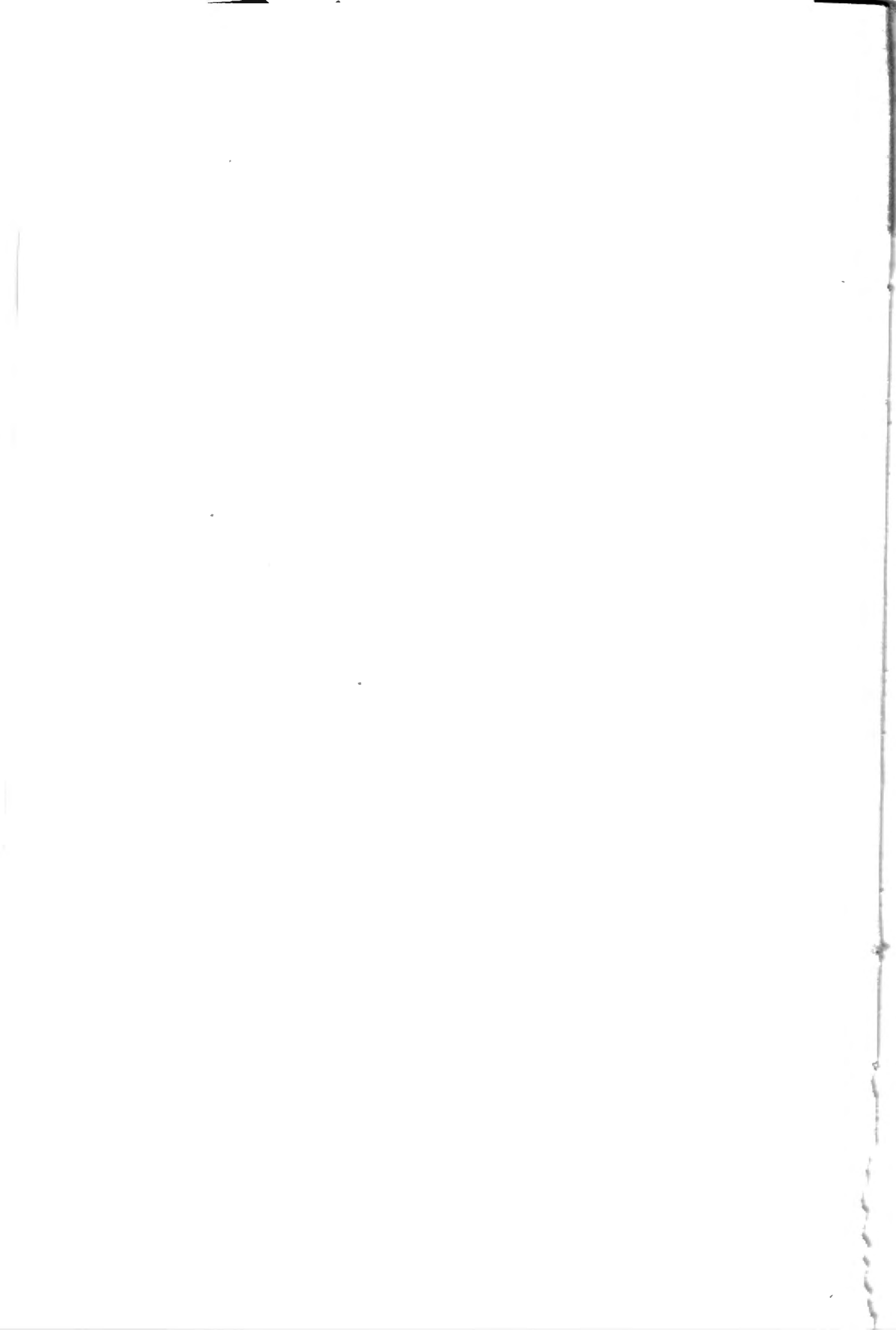


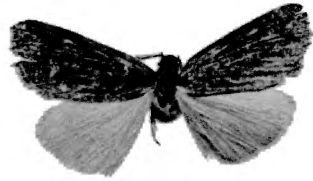


PLANCHE VII

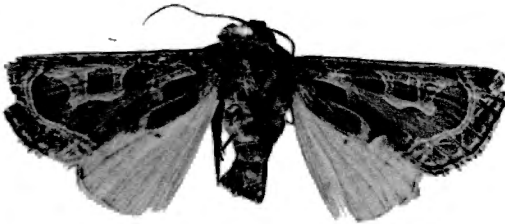




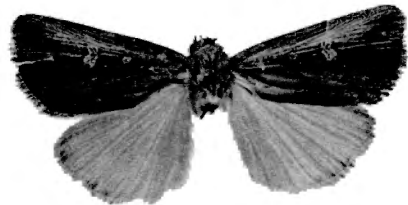
1



2



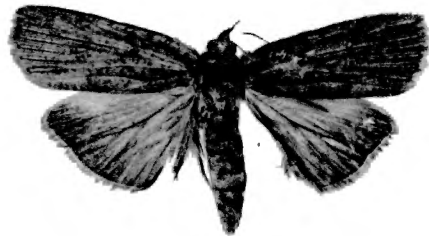
3



4



5



6

1. *Pais straeleniana* sp. nov. - 2. *Ethiopica subpurpurea* sp. nov.  
3. *Timæa janmoulei* sp. nov. - 4. *Matopo tamsi* sp. nov. -  
5. *Amata tomasina reducticincta* subsp. nov. (♂ Mubale,  
1/20.V.1947). - 6. *Isadelphina mariæ-claræ* sp. nov.

(au double de la grandeur naturelle).

