

PLATE I

EXPLANATION OF FIGURES.

- FIG. 1. — *Chiroscelis bifenestrella* WESTWOOD.
FIG. 2. — *Chiroscelis digitata* (FABRICIUS).
FIG. 3. — *Chirocharis australis* (WESTWOOD).
FIG. 4. — *Passalocharis intermedia* (GEBIEN).
FIG. 5. — *Passalocharis ciliata* n. sp.
FIG. 6. — *Hemipristula kenyensis* (BLAIR).
FIG. 7. — *Hemipristula Kraatzi* (GEBIEN).
FIG. 8. — *Hemipristula stygica* (KOLBE).
FIG. 9. — *Hemipristula Mülleri* (KRAATZ).
FIG. 10. — *Hemipristula ukamia* (KOLBE).
FIG. 11. — *Stratodemus heraldicus* GEBIEN.

Photo with REICHERT, Neupolar 50 and REICHERT, « Lux FNI » 20 W-voltage lamp.



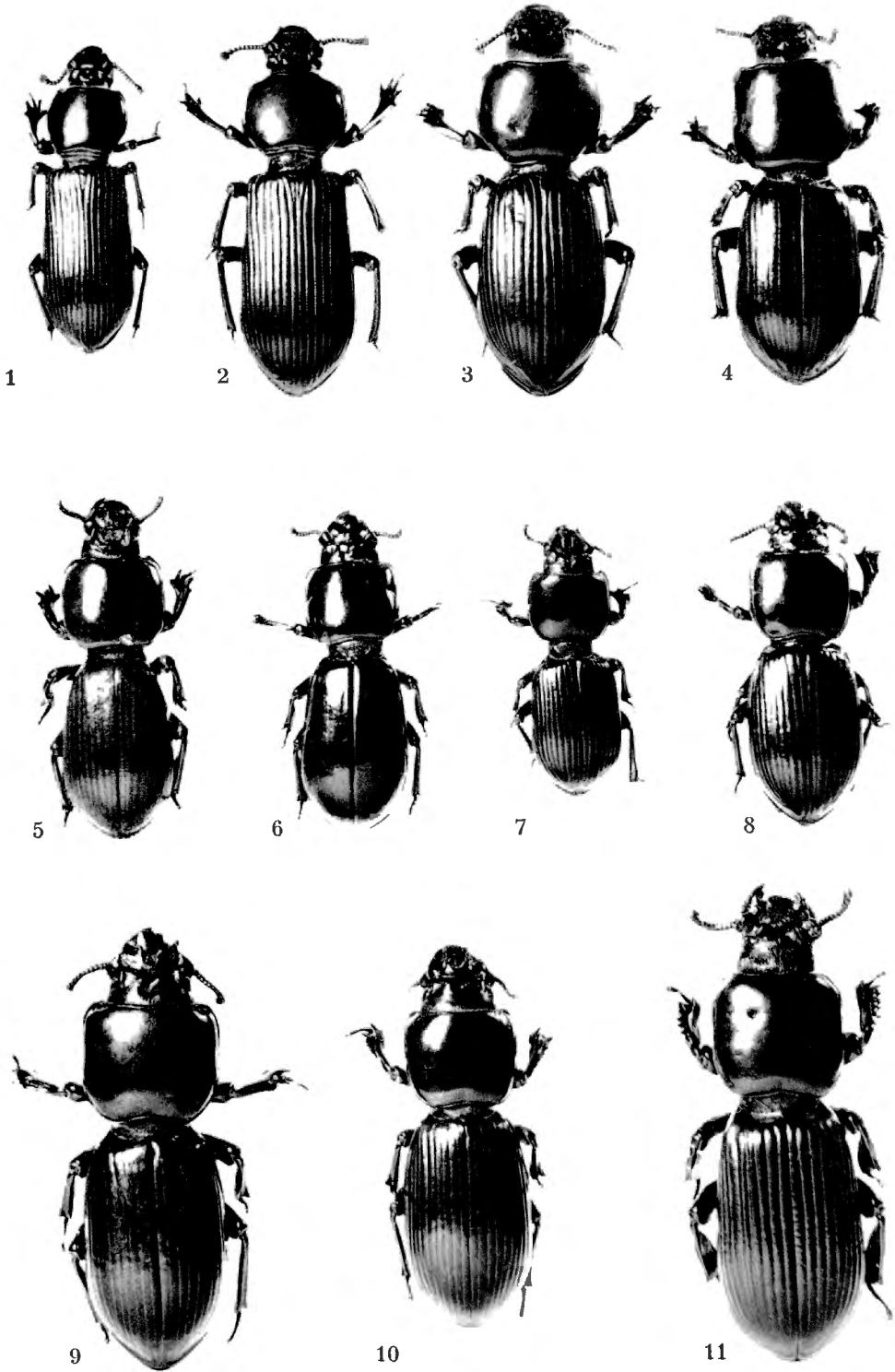
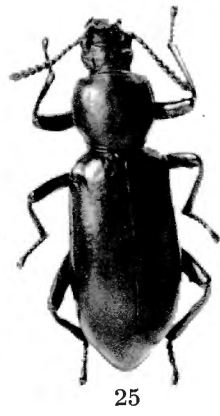
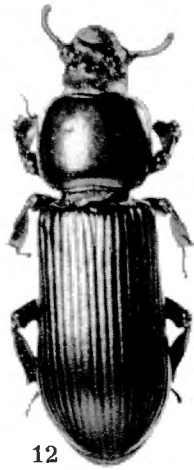


PLATE II

EXPLANATION OF FIGURES.

- FIG. 12. — *Pristophilus passaloides* (WESTWOOD).
FIG. 13. — *Prioproctus Oertzeni* KOLBE.
FIG. 14. — *Prioscelis serrata* (FABRICIUS).
FIG. 15. — *Prioscelis Westwoodi* KOLBE.
FIG. 16. — *Prioscelis Fabricii* HOPE.
FIG. 17. — *Prioscelis tridens* KOLBE.
FIG. 18. — *Prioscelis Thomsoni* GEBIEN.
FIG. 19. — *Prioscelis exigua* GEBIEN.
FIG. 20. — *Prioscelides rugosus* KOLBE.
FIG. 21. — *Prioscelides striatus* KOLBE.
FIG. 22. — *Gabonisca Straeleni* n. sp.
FIG. 23. — *Calostegia crassicornis* (WESTWOOD).
FIG. 24. — *Calostegia cylindrica* GEBIEN.
FIG. 25. — *Calostegia purpuripennis* WESTWOOD.

Photo with REICHERT, Neupolar 50 and REICHERT, « Lux FNI » 20 W-voltage lamp.



4

6

7

8

PLATE III

EXPLANATION OF FIGURES.

- FIG. 26. — *Catamerus Revoili* subsp. *Revoili* FAIBMAIRE.
FIG. 27. — *Catamerus Revoili* subsp. *Fairmairei* ALLUAUD.
FIG. 28. — *Catamerus Revoili* subsp. *intermedius* GAHAN.
FIG. 29. — *Catamerus Revoili* subsp. *manicanus* PÉRINGUEY.
FIG. 30. — *Catamerus Revoili* subsp. *rugosus* GAHAN.
FIG. 31. — *Pycnocerus* (s. str.) *Westermanni* subsp. *rugosus* GEBIEN.
FIG. 32. — *Pycnocerus* (*Dinoscelis*) *Passerini* (BERTOLONI).
FIG. 33. — *Pycnocerus* (s. str.) *sulcatus* subsp. *sulcatus* (FABRICIUS) from Cameroons.
FIG. 34. — *Pycnocerus* (s. str.) *sulcatus* subsp. *sulcatus* (FABRICIUS) from the Belgian Congo.
FIG. 35. — *Pycnocerus* (s. str.) *sulcatus* subsp. *opacicollis* nov.
FIG. 36. — *Pycnocerus* (s. str.) *sulcatus* subsp. *exaratus* (HAROLD).

Photo with REICHERT, Neupolar 50 and REICHERT, « Lux FNI » 20 W-voltage lamp.

Exploration du Parc National de l'Upemba.

Mission G.-F. de Witte

en collaboration avec W. Adam, A. Janssens,

L. Van Meel et R. Verheyen (1946-1949). Fasc. 24.

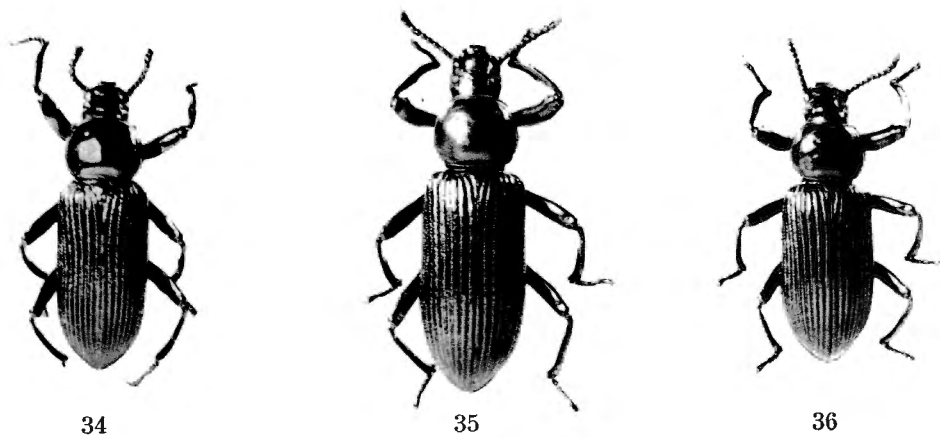
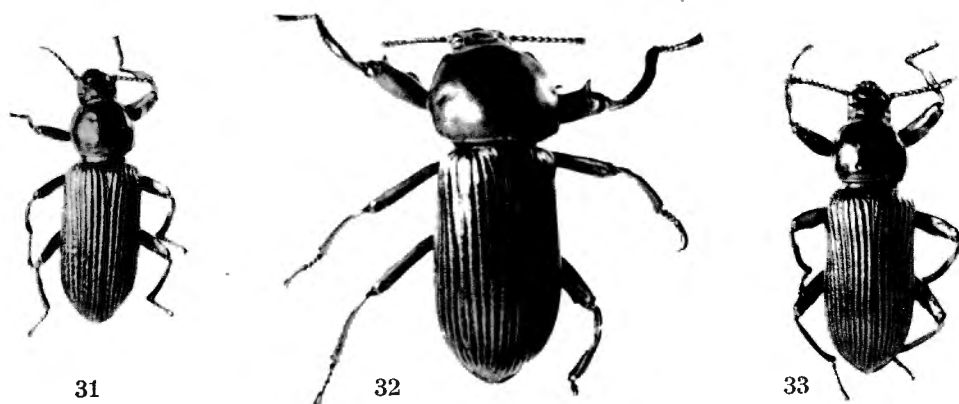
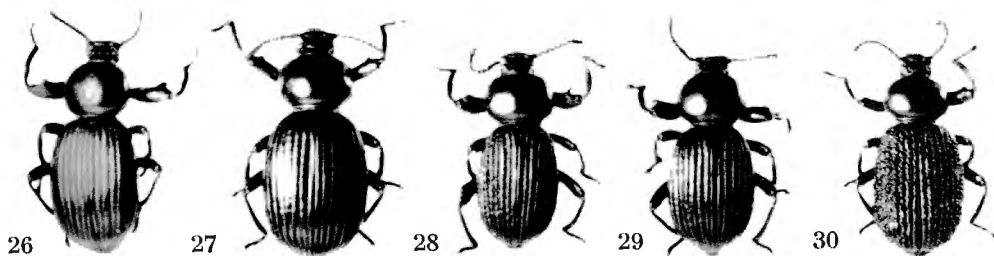


PLATE IV

EXPLANATION OF FIGURES.

- FIG. 37. — *Odontopezus cupreus* subsp. *cupreus* (FABRICIUS).
FIG. 38. — *Odontopezus cupreus* subsp. *lucens* GEBIEN.
FIG. 39. — *Odontopezus asper* ALLUAUD.
FIG. 40. — *Odontopezus regalis* (HAROLD).
FIG. 41. — *Odontopezus obsoletus* (THOMSON).
FIG. 42. — *Metallonotus ærugineus* (GERSTAECKER) ♂.
FIG. 43. — *Metallonotus ærugineus* (GERSTAECKER) ♀.
FIG. 44. — *Metallonotus festivus* (GERSTAECKER).
FIG. 45. — *Metallonotus silvaticus* n. sp.
FIG. 46. — *Metallonotus Jansseni* n. sp.
FIG. 47. — *Metallonotus tenuecostatus* (FAIRMAIRE).
FIG. 48. — *Metallonotus subcarinipes* n. sp.
FIG. 49. — *Metallonotus cariosus* FAIRMAIRE.
FIG. 50. — *Metallonotus nitidus* subsp. *purpuripennis* n.
FIG. 51. — *Metallonotus viridis* n. sp.
FIG. 52. — *Metallonotus splendens* GEBIEN.
FIG. 53. — *Metallonotus cupripennis* GEBIEN.
FIG. 54. — *Metallonotus speciosus* subsp. *gloriosus* GEBIEN.
FIG. 55. — *Metallonotus speciosus* subsp. *simulator* GEBIEN.
FIG. 56. — *Metallonotus speciosus* subsp. *cælestinus* n.
FIG. 57. — *Metallonotus speciosus* subsp. *varicolor* n.
FIG. 58. — *Metallonotus speciosus* subsp. *varicolor* n.
FIG. 59. — *Metallonotus asperatus* PASCOE.
FIG. 60. — *Metallonotus costatus* (HAROLD).
FIG. 61. — *Metallonotus speciosus* subsp. *varicolor* n.

Photo with REICHERT, Neupolar 50 and REICHERT, « Lux FNI » 20 W-voltage lamp.

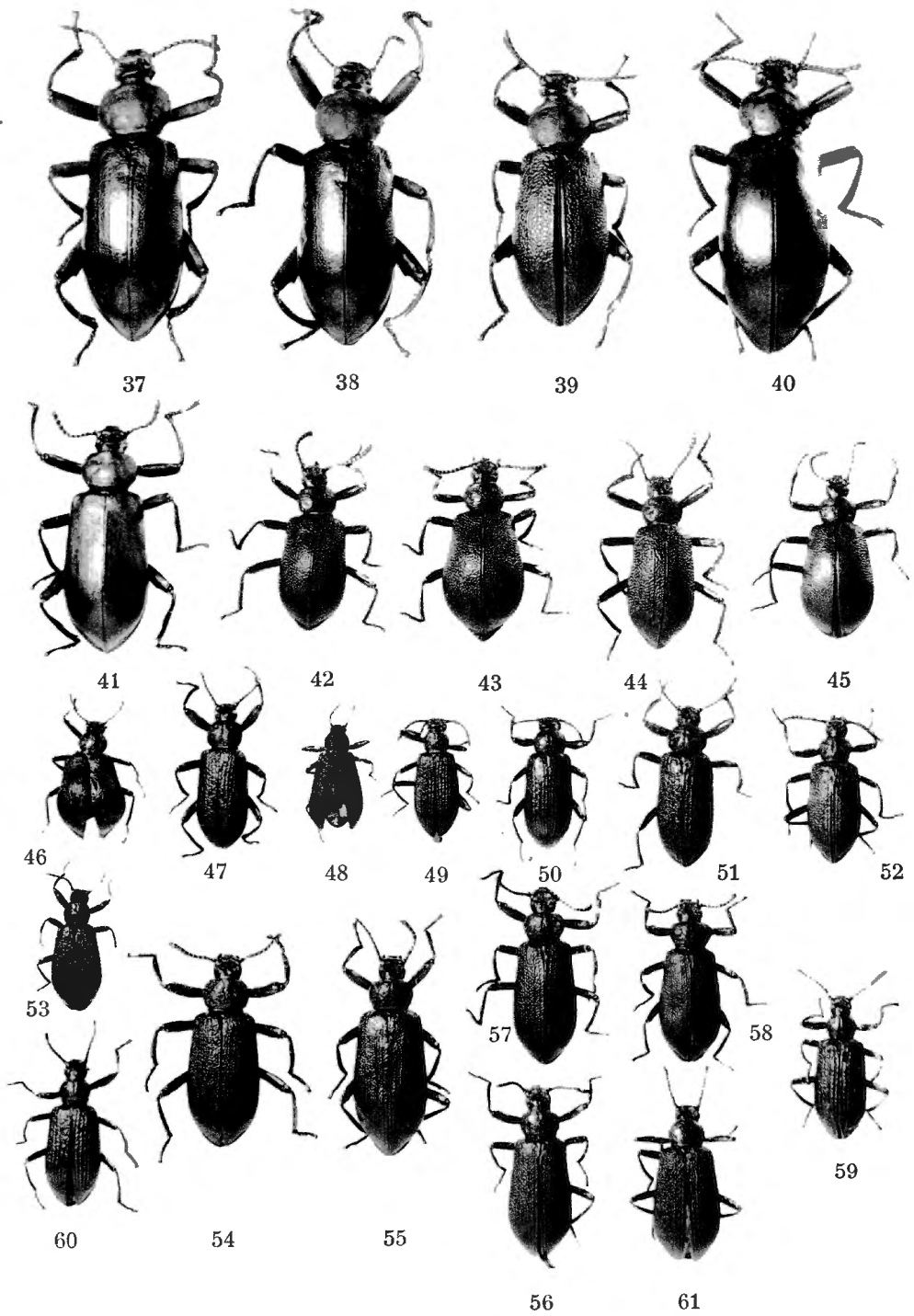




PLATE V

EXPLANATION OF FIGURES.

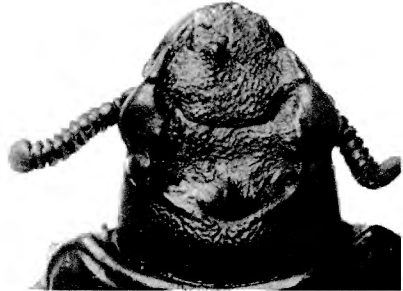
Upper surface of head.

- FIG. 62. — *Chirocharis australis* (WESTWOOD).
FIG. 63. — *Passalocharis intermedia* (GEBIEN).
FIG. 64. — *Passalocharis ciliata* n. sp.
FIG. 65. — *Passalocharis Leleupi* n. sp.
FIG. 66. — *Hemipristula Kraatzi* (GEBIEN).
FIG. 67. — *Hemipristula kenyensis* (BLAIR).
FIG. 68. — *Hemipristula stygica* (KOLBE).

Photo with REICHERT, Neupolar 50 and REICHERT, « Lux FNI » 20 W-voltage lamp.



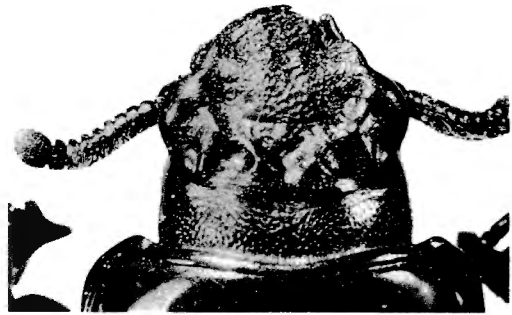
62



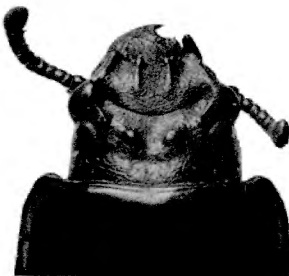
63



64



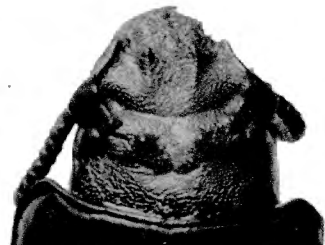
65



66



67



68

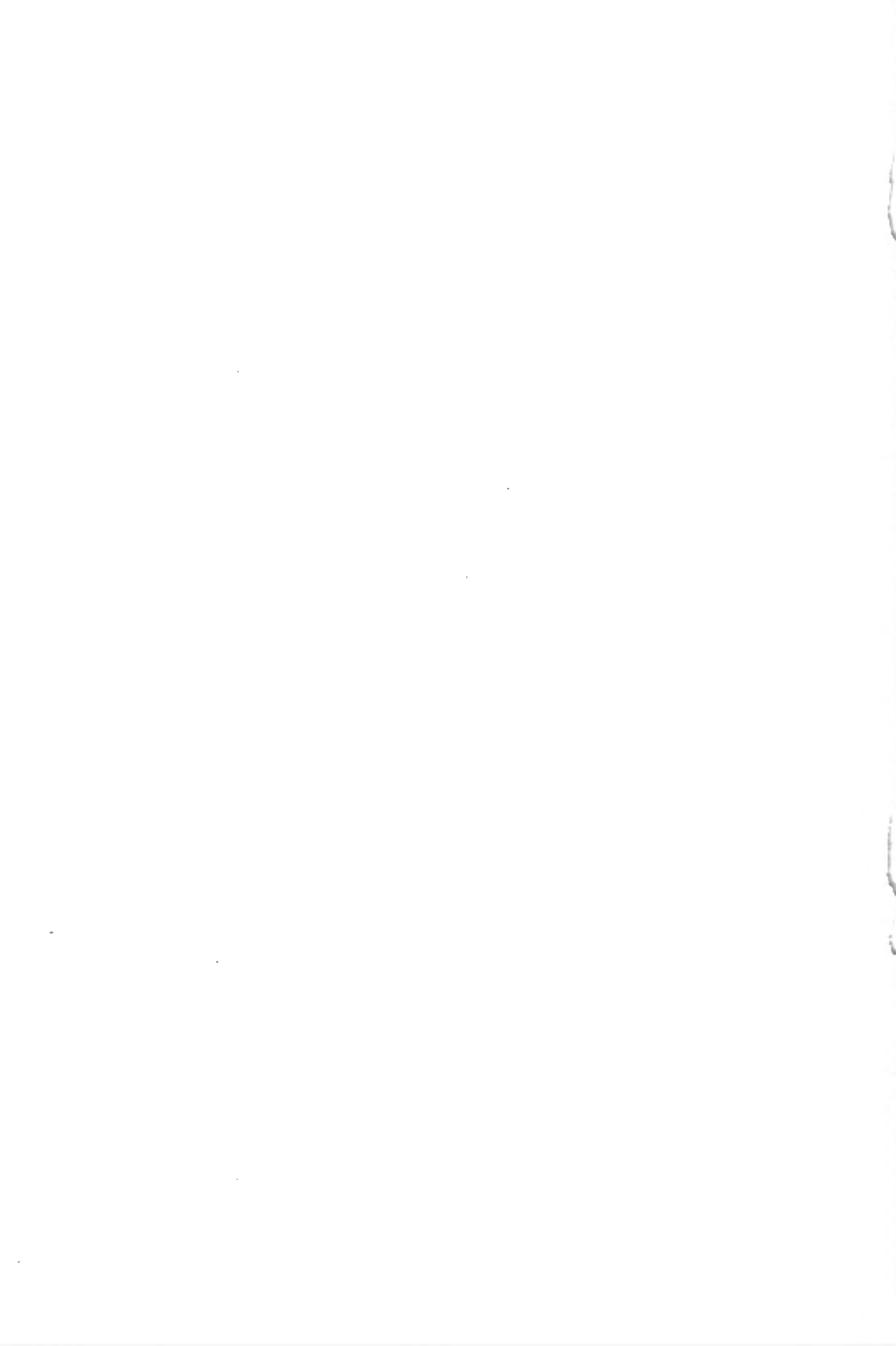
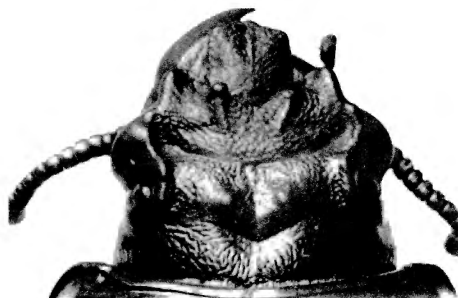


PLATE VI

EXPLANATION OF FIGURES.

- FIG. 69. — *Hemipristula Mülleri* (KRAATZ). Upper surface of head.
FIG. 70. — *Hemipristula ukamia* (KOLBE). Upper surface of head.
FIG. 71. — *Chiroscelis bifenestrella* WESTWOOD. Underside of head, with mentum.
FIG. 72. — *Hemipristula stygica* (KOLBE). Buccal fissure teeth.
FIG. 73. — *Hemipristula Mülleri* (KRAATZ). Underside of head, with mentum.
FIG. 74. — *Hemipristula ukamia* (KOLBE). Intercoxal structures of sterna.
FIG. 75. — *Chiroscelis bifenestrella* WESTWOOD. Pleurital parts of metasternum.

Photo with REICHERT, Neupolar 50 and REICHERT, « Lux FNI » 20 W-voltage lamp.



69



70



71



72



73



74



75

4

5

6

7

PLATE VII

EXPLANATION OF FIGURES.

- FIG. 76. — *Chiroscelis bifenestrella* WESTWOOD. Portion of mesothoracic tergite, with scutum and scutellum.
- FIG. 77. — *Chiroscelis digitata* (FABRICIUS). Portion of mesothoracic tergite with scutum and scutellum.
- FIG. 78. — *Hemipristula ukamia* (KOLBE). Posterior tibia.
- FIG. 79. — *Chiroscelis bifenestrella* WESTWOOD. Antenna.
- FIG. 80. — *Hemipristula Mülleri* (KRAATZ). Posterior tibia.
- FIG. 81. — *Chirocharis australis* (WESTWOOD). Anterior tibia.
- FIG. 82. — *Chiroscelis bifenestrella* WESTWOOD. Posterior tibia.
- FIG. 83. — *Hemipristula stygica* (KOLBE). Anterior tibia.

Photo with REICHERT, Neupolar 50 and REICHERT, « Lux FNI » 20 W-voltage lamp.



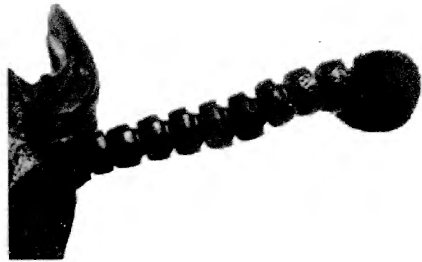
76



77



78



79



80



81



82



83

PLATE VIII

Exploration du Parc National de l'Upemba.

Mission G.-F. de Witte

en collaboration avec W. Adam, A. Janssens,

L. Van Meel et R. Verheyen (1946-1949). Fasc. 24.



Coll. Inst. Parcs Nat. Congo Belge.

Photo J.-P. Harroy.

Fig. 1. — ALBERT NATIONAL PARK
Forest gallery of the Semliki river. Altitude : 880 m.



Coll. Inst. Parcs Nat. Congo Belge.

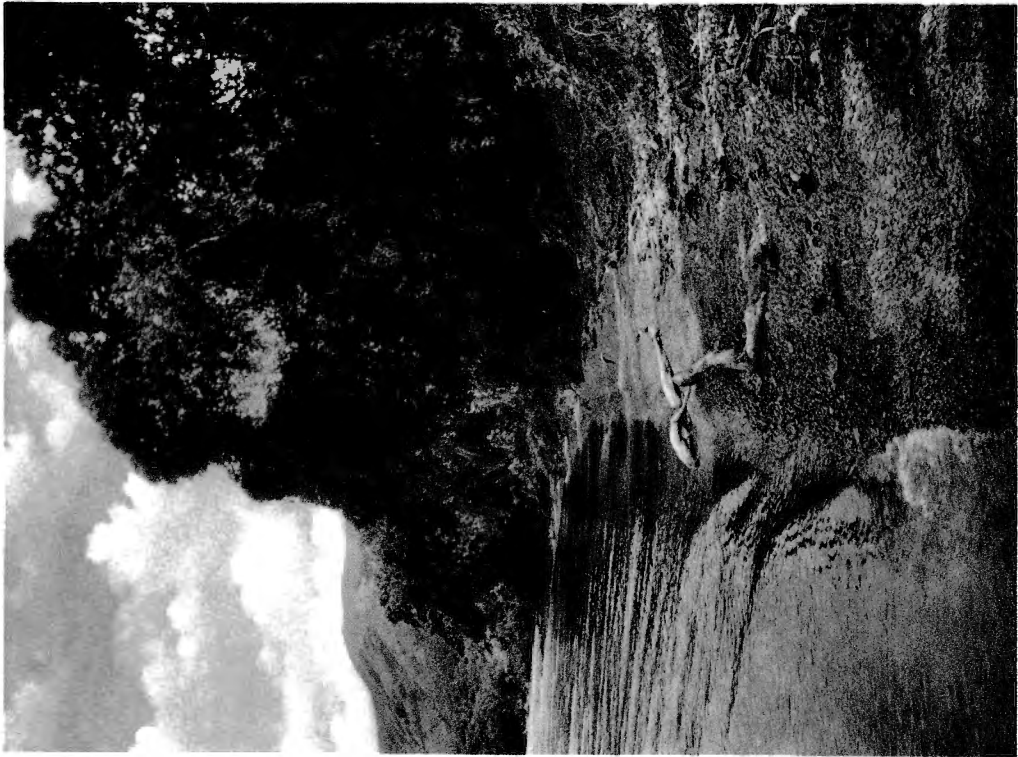
Photo J.-P. Harroy.

Fig. 2. — ALBERT NATIONAL PARK
Big forest near the Butahu river. Altitude : 1.100 m.



PLATE IX





Coll. Inst. Parcs Nat. Congo Belge. Photo H. Damas.
Fig. 1. — ALBERT NATIONAL PARK
Western river of the Edward Lake at Bugazia. Altitude : 915 m.



Coll. Inst. Parcs Nat. Congo Belge. Photo G.-F. de Witte.
Fig. 2. — UPEMBA NATIONAL PARK
Forest gallery of the Lupiala river near Kaswabilenga. Altitude : 700 m.

PLATE X



Coll. Inst. Parcs Nat. Congo Belge.

Photo G.-F. de Witte.

Fig. 1. — UPEMBA NATIONAL PARK
Forest at Mabwe, Eastern river of the Upemba Lake. Altitude : 585 m.



Coll. Inst. Parcs Nat. Congo Belge.

Photo G.-F. de Witte.

Fig. 2. — UPEMBA NATIONAL PARK
Katanga forest at Kanonga. Altitude : 695 m.

