

HEMIPTERA

Family MEMBRACIDAE

BY

W. D. FUNKHOUSER (Lexington U. S. A.) (1).

I. — Genus **ACANTHOPHYES** STÅL.

Acanthophyes STÅL, Hem. Afr., IV, 1866, p. 89; Hem. Fabr., II, 1, 1869, p. 50. — ATKINSON, J. A. S. B., 54, 1885, p. 84. — BUCKTON, Mon. Membr., 1903, p. 265. — DISTANT, Fauna Brit. Ind., 1907, p. 26. — FUNKHOUSER, Gen. Cat. Hemipt., I, Membr., 1927, p. 338.

1. — **Acanthophyes albipennis** STÅL.

Acanthophyes albipennis STÅL, Hem. Afr., IV, 1866, p. 89. — BUCKTON, Mon. Membr., 1903, p. 265. — DISTANT, Fauna Brit. Ind., 1907, p. 26.

Rweru, volcan Mikeno (sur bambous) (alt. 2.400 m.), 27.VII.1934; Shamuheru (volcan Nyamuragira) (alt. 1.820 m.), 14-26.VI.1935.

Trois exemplaires.

II. — Genus **ANCHON** BUCKTON.

Anchon BUCKTON, Mon. Membr., 1903, p. 214; Trans. Linn. Soc. Zool., IX, 1905, p. 333. — MELICHAR, Wein. Ent. Zeit., XXIV, 1905, p. 296. — DISTANT, Fauna Brit. Ind., 1907, p. 52; Trans. Ent. Soc. Lond., III, 1914, p. 516; Fauna Brit. Ind. App., 1916, p. 162. — SCHMIDT, Zool. Anz., XXXVIII, 1911, p. 237. — JACOBI, Ergebn. Zentr.-Afr. Exp., IV, 1912, p. 36. — LAMBORN, Trans. Ent. Soc. Lond., III, 1914, p. 444. — FUNKHOUSER, Can. Ent., LI, 1919, p. 220; Gen. Cat. Hemipt., I, Membr., 1927, p. 342.

(1) La présente publication ne comprend qu'une partie de l'étude des *Membracidae* de la Mission G. F. DE WITTE, la suite du manuscrit n'a pu nous parvenir en raison des événements en cours.

2. — **Anchon Boneti** PELÁEZ.

Anchon Boneti PELÁEZ, Eos, 11, 1935, p. 33.

Rutshuru (alt. 1.285 m.), 1-6.VI.1935; escarpement de Kabasha (alt. 1.500 m.), 12.XII.1934.

Two specimens.

3. — **Anchon poensis** PELÁEZ.

Anchon poensis PELÁEZ, Eos, 11, 1935, p. 37.

Camp de la Rwindi (alt. 1.000 m.), 22-24.XI.1934; N'Zulu (lac Kivu) (alt. 1.500 m.), 9-14.II.1934; lac Magera (alt. 2.000 m.), 26.II-6.III.1934.

Six specimens.

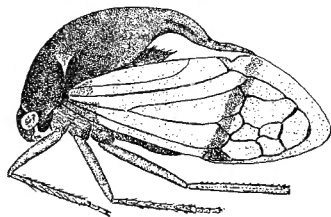
III. — Genus **EVANCHON** GODING.

Evanchon GODING, N. Y. Ent. Soc., 38, 1930, p. 40.

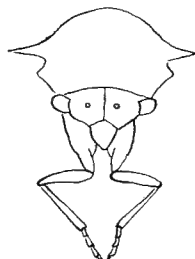
4. — **Evanchon nitida** n. sp.

(FIG. 1, 2.)

Shining, smooth, finely punctate, not pubescent; pronotum convex with slender, short, sharp, horizontal suprahumeral and a strong, sinuate posterior process elevated above the scutellum and abdomen and reaching the internal angles of the tegmina; tegmina hyaline with heavy black veins and with a brown fascia across the middle; undersurface of body black; legs yellow.



1.



2.

Evanchon nitida sp. n.

FIG. 1: Lateral view. — FIG. 2: Frontal outline.

TECHNICAL DESCRIPTION. — Head subquadrate, wider than high, black, smooth, shining, not punctate nor pubescent; base regularly arcuate; eyes ovate, mottled brown and black; ocelli large, conspicuous, pearly, equidistant from each other and from the eyes and situated about on a line

drawn through centers of eyes; inferior margins of genae sloping and rounded; clypeus extending for two-thirds its length below inferior margins of genae, tip rounded and pilose.

Pronotum convex, smooth, shining, brown, feebly punctate, not pubescent; metopidium sloping, broader than high, shining dark brown; humeral angles strong, triangular and acute; median carina obsolete; suprahumeral horns short, spine-like, slender, sharp, extending directly outward about twice as far as the humeral angles; posterior process heavy, sinuate, the base rising above and not touching the scutellum, then curving downward and following the line of the tegmina, tip sharp and just reaching the internal angles of the tegmina; scutellum entirely exposed, subtriangular, pilose, tip notched.

Tegmina entirely free, hyaline with heavy black veins; base narrowly coriaceous and punctate; five irregularly shaped apical cells, the median apical cell with base truncate; three discoidal cells; apical limbus broad; a narrow brown band across middle of corium.

Sides of thorax black with dense white silky pubescence; abdomen black; legs yellow; hind tarsi missing in the type specimen.

Length from front of head to tips of tegmina 6.2 mm.; width between tips of suprahumeral 3.6 mm.

Type : female.

Type locality : Belgian Congo : Kivu, Rutshuru (alt. 1.285 m.).

Described from a single specimen collected by G. F. DE WITTE and dated « 30.XII.1933 au 3.I.1934 ».

IV. — Genus **GARGARA** AMYOT et SERVILLE.

Gargara AMYOT et SERVILLE, Hémipt., 1843, p. 537; Ann. Soc. Ent. France, V, 1847, p. 181. — EMMONS, Agr., N. Y. V., 1854, p. 156. — KIRSCHBAUM, Cicad., 1855, p. 68; Cicad. Wiesbd., 1868, p. 68. — DOHRN, Cat. Hem., 1859, p. 82. — STÅL, Hem. Afr., IV, 1866, p. 98; Phil. Hem., 1870, p. 255. — LETHIERRY, Cat. Hem., 1874, p. 51; Ann. Soc. Ent. Belg., XIX, 1876, p. 80. — FIEBER, Rev. Mag. Zool., 1875, p. 23. — MAYR, Cic. Cent. Eur., 1884, p. 15. — FERRARI, Bull. Soc. Ent. Stal., 1885, p. 283. — GERARD, Trait. Élé. d'Entom., III, 1885, p. 868. — EDWARDS, Trans. Ent. Soc. Lond., II, 1886, p. 48; Hem. Hom. Brit. Isl., 1896, p. 20. — FALLON, Rev. Ent., 1891, p. 354. — GODING, Ent. News, III, 1892, p. 110. — MELICHAR, Hom. Ceylon, 1903, p. 124; Membr. Cerc., 1904, p. 16. — BUCKTON, Mon. Membr., 1903, p. 258. — OSHANIN, Pal. Hem., 1906, p. 44. — DISTANT, Fauna Brit. Ind., 1907, p. 61; Ins. Trans., I, 1908, p. 217; Ann. Mag. Nat. Hist., XVI, 1915, p. 491; Fauna Brit. Ind. App., 1916, p. 172. — LEFROY, Ind. Ins. Life, 1909, p. 732. — BIERMAN, Notes Mus. Leid., XXXIII, 1910, p. 45. — BANKS, Phil. Journ. Sci., V, 1910, p. 48. — ENSLIN, Zeit. Weis. Ins., VII, 1911, p. 19. — MATSUMURA, Cic. Japan, II, 1912, p. 24. — SHIE-

DERER, Ent. Jahr., 1913, p. 174. — FUNKHOUSER, Journ. Ent. Zool., VI, 1914, p. 71; Journ. N. Y. Ent. Soc., XXII, 1914, p. 236; Phil. Membr., 1915, p. 400; Malayan Membr., 1918, p. 13; Notes Phil. Membr., 1918, p. 38; Phil. Journ. Sci., XV, 1919, p. 25; J. R. A. S., 82, 1920, p. 221; Bull. Brook. Ent. Soc., XVI, 1921, p. 51; Rec. Ind. Mus., XXIV, 1922, p. 325; Hem. Conn., 1923, p. 172; Gen. Catal. Hemipt., I, Membr., 1927, p. 396. — LAMBORN, Trans. Ent. Soc. Lond., III, 1914, p. 443. — JENSEN-HAARUP, Cicak., 1920, p. 69. — WEISS and DICKERSON, Ent. News, XXXII, 1921, p. 111.

Maerops BUCKTON, Mon. Membr., 1903, p. 257.

5. — **Gargara asperula** (WALKER).

Centrotus asperula WALKER, List Hom. B. M., 1858, p. 162.

Gargara asperula DISTANT, Ann. Mag. Nat. Hist., XVI, 1915, pp. 96, 491.

Rutshuru (alt. 1.285 m.), 23-25.XII.1933; 30.XII.1933 au 3.I.1934; N'Zulu (lac Kivu) (alt. 1.500 m.), 9-14.II.1934.

Three specimens.

V. — Genus **LEPTOCENTRUS** STÅL.

Leptocentrus STÅL, Analect. Hem., 1866, p. 386; Hem. Afr., IV, 1866, pp. 87, 90; Hem. Fabr., II, 1869, p. 50; Hem. Phil., 1870, p. 727. — ATKINSON, J. A. S. B., 1885, pp. 54, 86. — GODING, Cat. Membr. N. A., 1894, p. 477. — MELICHAR, Hom. Ceylon, 1903, p. 117; Wein. Ent. Zeit., XXIV, 1905, p. 294. — BUCKTON, Mon. Membr., 1903, p. 234; Trans. Linn. Soc. Zool., IX, 1905, p. 334. — NOUALHIER et MARTIN, Mission Pavie, III, 1904, p. 167. — DISTANT, Fauna Brit. Ind., 1907, p. 28; Trans. Ent. Soc. Lond., III, 1914, p. 494; Rhynch. Notes, 1916, pp. 150, 315; Fauna Brit. Ind. App., 1916, p. 155. — FOWLER, B. C. A. Suppl., 1909, p. 321. — LEFROY, Ind. Ins. Life, 1909, p. 731. — BANKS, Phil. Journ. Sci., V, 1910, p. 48. — MATSUMURA, Cic. Japan, II, 1912, p. 15. — FUNKHOUSER, Journ. Ent. Zool., VI, 1914, p. 68; Phil. Membr., 1915, p. 379; Malayan Membr., 1918, p. 3; Notes Phil. Membr., 1918, p. 37; Phil. Journ. Sci., XV, 1919, p. 19; Gen. Catal. Hemipt., I, Membr., 1927, p. 423. — LAMBORN, Trans. Ent. Soc. Lond., III, 1914, p. 443. — POULTON, Proc. Ent. Soc. Lond., 1914, p. 31. — SCHUMACHER, Sant. Formosa, 1915, p. 116.

Rabduchus BUCKTON, Mon. Membr., 1903, p. 251.

6. — **Leptocentrus altifrons** (WALKER).

Centrotus altifrons WALKER, List Hom. B. M., 1851, 21, p. 608. — DOHRN, Cat. Hem., 1859, p. 82.

Centrotus atratus WALKER, List Hom. B. M., 1851, 60, p. 624. — DOHRN, Cat. Hem., 1859, p. 82 (Cat.).

- Centrotus bos* SIGNORET, Thoms. Arch., II, 1858, pp. 336, 640.
Leptocentrus bos STÅL, Hem. Afr., IV, 1866, p. 90. — BUCKTON, Mon. Membr., 1903, pp. 234, 268. — MELICHAR, Wein. Ent. Zeit., XXIV, 1905, p. 295.
Rabduchus gnomon BUCKTON, Mon. Membr., 1903, p. 251, tab. 57, figs. 4-4b; Mon. Membr., 1903, p. 270 (Cat.).
Leptocentrus altifrons DISTANT, Trans. Ent. Soc. Lond., III, 1914, p. 516; Rhynch. Notes, 1916, pp. 150, 315. — LAMBORN, Trans. Ent. Soc. Lond., III, 1914, pp. 494-497; idem, pp. 443, 462. — POULTON, Proc. Ent. Soc. Lond., 1913 (1914), p. 31.
 Burunga (Mokoto) (alt. 2.000 m.), 15-16.III.1934.
 Only a single specimen.

7. — **Leptocentrus aureomaculatus** DISTANT.

- Leptocentrus aureomaculatus* DISTANT, Rhynch. Notes, 1916, p. 315.
 Rutshuru (alt. 1.285 m.), 12.VII.1935.
 Only a single specimen.

8. — **Leptocentrus confusus** DISTANT.

- Leptocentrus leucaspis* MELICHAR, (err.), Wein. Ent. Zeit., XXIV, p. 295.
Bocchar montanus JACOBI, (part.), Kil. Exp., XII, 1910, p. 120, tab. 2, fig. 2.
Leptocentrus confusus DISTANT, Rhynch. Notes, 1916, p. 151.
 Rwindi (alt. 1.000 m.), 20-24.XI.1934; Sake (lac Kivu) (alt. 1.560 m.), 19-22.II.1934; Rutshuru (alt. 1.285 m.), 7.VI.1935.
 Three specimens.

9. — **Leptocentrus limbipennis** JACOBI.

- Leptocentrus limbipennis* JACOBI, Kil. Exp., XII, 1910, p. 120. — DISTANT, Rhynch. Notes, 1916, p. 315.
 Rutshuru (alt. 1.285 m.), 15-25.IX.1933; 11-12.VII.1935.
 Six specimens.

VI. — Genus **OTINOTUS** BUCKTON.

- Otinotus* BUCKTON, Mon. Membr., 1903, p. 233. — DISTANT, Fauna Brit. Ind., 1907, p. 39; Ann. Mag. Nat. Hist., 1914, p. 332; Fauna Brit. Ind. App., 1916, p. 158. — FUNKHOUSER, Can. Ent., LI, 1919, p. 222; Rec. Ind. Mus., XXIV, 1922, p. 327; Gen. Catal. Hemipt., I, Membr., 1927, p. 454.
Otionotus MELICHAR, Wein. Ent. Zeit., XXIV, 1905, p. 295.

10. — **Otinotus pilosus** FUNKHOUSER.

Otinotus pilosus FUNKHOUSER, Can. Ent., LI, 10, 1919, p. 222, figs. 5, 6.

Rutshuru (alt. 1.285 m.), 20-29.VI.1934; 16-30.X.1934.

Two specimens.

VII. — Genus **PLATYBELUS** STÅL.

Platybelus STÅL, Hem. Afr., IV, 1866, p. 96. — MELICHAR, Hom. Ceylon, 1903, p. 120. — BUCKTON, Mon. Membr., 1903, p. 269. — JACOBI, Kil. Exp., XII, 1910, p. 123. — MATSUMURA, Cic. Japan, II, 1912, p. 16. — FUNKHOUSER, Journ. N. Y. Ent. Soc., XXII, 1914, p. 239; Gen. Catal. Hemipt., I, Membr., 1927, p. 467. — DISTANT, Rhynch. Notes, 1916, p. 325.

11. — **Platybelus africanus** DISTANT.

Platybelus africanus DISTANT, Rhynch. Notes, 1916, p. 325.

Kibati (alt. 1.900 m.), 12-13.I.1934; Sake (lac Kivu) (alt. 1.560 m.), 19-22.II.1934; Burunga (alt. 2.000 m.), 9-14.III.1934; Ruanda : Ruhengeri (sources Kirii) (alt. 1.800-1.850 m.), 31.VIII-3.IX.1934; Ruanda : Rwankeri (alt. 2.200 m.), 4.V.1935; Rutshuru (alt. 1.285 m.), 1-6.VI.1935, VII.1935.

Seven specimens.

[**Platybelus insignis** DISTANT.]

Platybelus insignis DISTANT, Rhynch. Notes, 1916, p. 326.

Uele : Monga (alt. 450 m.), 18.IV-8.V.1935.

Only a single specimen.

12. — **Platybelus sinuosus** DISTANT.

Platybelus sinuosus DISTANT, Rhynch. Notes, 1916, p. 155.

Kundhuru ya Tshuve, col Gahinga-Sabinyo (alt. 2.600 m.), 18.IX.1934; Ruanda : versant Sud volcan Karisimbi (rivière Bikwi) (alt. 3.100-3.200 m.), 26.II.1935; Mushumangabo, volcan Nyamuragira (alt. 2.075 m.), 14-26.VI.1935.

Six specimens.

VIII. — Genus **SPALIRISES** DISTANT.

Spalirises DISTANT, Rhynch. Notes, 1916, p. 29. — FUNKHOUSER, Gen. Catal. Hemipt., I, Membr., 1927, p. 483.

13. — **Spalirises alticornis** (JACOBI).

Centrotus alticornis JACOBI, Zentr.-Afr. Exp., 1910, p. 35, fig. *a*.

Spalirises alticornis DISTANT, Rhynch. Notes, 1916, p. 29.

Lac Magera (alt. 2.000 m.), 6.III.1934; Burunga (Mokoto) (alt. 2.000 m.), 15-16.III.1934; Mayumbu, volcan Nyamuragira (alt. 2.100 m.), 14-16.VI.1935.

Three specimens.

IX. — Genus **TRICOCEPS** BUCKTON.

Tricoceps BUCKTON, Mon. Membr., 1903, p. 249. — DISTANT, Rhynch. Notes, 1916, p. 322. — FUNKHOUSER, Gen. Catal. Hemipt., I, Membr., 1927, p. 504.

Tambusa DISTANT, Ins. Trans., 1908, p. 216 (preoccupied).

Tambusana DISTANT, Ann. Mag. Nat. Hist., IX, 1912, p. 652 (nom. nov.).

14. — **Tricoceps rugosa** FUNKHOUSER.

Tricoceps rugosa FUNKHOUSER, Annu. Mus Zool. Acad. Leningrad, 28, 1927, p. 149, fig.

Sake (lac Kivu) (alt. 1.460 m.), 19-22.II.1934; Ruanda : Burambi (alt. 2.325 m.), 5.IX.1934; Rutshuru (alt. 1.285 m.), 6.VII.1935.

Five specimens.

X. — Genus **TSHAKA** DISTANT.

Tshaka DISTANT, Ins. Trans., 1908, p. 214; Rhynch. Notes, 1916, p. 42. — FUNKHOUSER, Gen. Catal. Hemipt., I, Membr., 1927, p. 506.

15. — **Tshaka obortus** DISTANT.

Tshaka obortus DISTANT, Rhynch. Notes, 1916, p. 42.

Rutshuru (alt. 1.285 m.), 15-25.IX.1933, 22.V-4.VI.1934, 18-23.VI.1934, 1-6.VI.1935; Ruanda : Muhavura (alt. 3.900 m.), 11.IX.1934; Rwindi (alt. 1.000 m.), 22-24.XI.1934; Ruanda : Ruhengeri (alt. 1.800-1.825 m.), 6.II.1935; Uele : Monga (alt. 450 m.), 18.IV-8.V.1935; Ruanda : Nyabirehe (versant Sud Karisimbi) (alt. 2.400 m.), 22.II.1935.

Twenty three specimens.

XI. — Genus **UROXIPHUS** AMYOT and SERVILLE.

Uroxiphus AMYOT et SERVILLE, Hemipt., 1843, p. 550. — WALKER, List Hom. B. M. Suppl., 1858, p. 341. — STÅL, Hem. Afr., IV, 1866, p. 92. — BUCKTON, Mon. Membr., 1903, p. 271. — DISTANT, Ann. Mag. Nat. Hist., XVI, 1915, p. 492. — FUNKHOUSER, Gen. Catal. Hemipt., I, Membr., 1927, p. 507.

16. — **Uroxiphus maculiscutum** AMYOT and SERVILLE.

Uroxiphus maculiscutum AMYOT et SERVILLE, Hemipt. 1843, p. 550. — STÅL, Hem. Afr., IV, 1866, p. 92. — BUCKTON, Mon. Membr., 1903, p. 271 (Cat.).
Centrotus maculiscutum FAIRMAIRE, Rev. Membr., 1846, p. 519. — WALKER, List Hom. B. M., 1851, p. 629. — DOHRN, Cat. Hemipt., 1859, p. 82.

Ruanda : Burambi (alt. 2.325 m.), 5.IX.1934; Kabasha (alt. 1.500 m.), 12.XII.1934; Kabasha (Kanyabayongo) (alt. 1.760 m.), 12.XII.1934; Nyabirehe (versant Sud Karisimbi) (alt. 2.400 m.), 22.II.1935; Bugeshi (alt. 2.600 m.), 10-12.III.1935; Ruanda : Mulera (alt. 1.800-2.000 m.), 4.V.1935; Kibati (alt. 1.900 m.), 4.V.1935.

Eight specimens.