

TWO NEW RHADINOMERUS

(Fam. CURCULIONIDAE)

BY

SIR GUY A. K. MARSHALL (London)

Rhadinomerus cavisquamis sp. n.

(Fig. 1.)

♂ ♀. Derm dull black, with dense brown or brownish-grey scales and paler grey markings as follows: the pronotum with two small spots in the middle of the disk and another on each side of the base near (but not reaching) the basal angle, with often a much smaller spot in the middle of the base; the elytra with a small spot on interval 5 at one-third from the base, often extending backwards or obliquely to interval 3, a very indefinite broken band across the top of the declivity, a small spot on the posterior callus, a larger indefinite one near the apical angle; and often some widely scattered minute whitish spots; all the markings often more or less obliterated; the scales concave and overlapping.

Head with the dorsal outline of the frons continuous with that of the rostrum, the strong punctures almost concealed by dense scaling, the frons with a deep round fovea. Rostrum of the ♂ gently curved, parallel-sided but slightly wider beyond the antennae, the dorsum somewhat flattened, coarsely rugose and squamose right up to the apex, with an indistinct median carina on the basal half which is often more or less obliterated; rostrum of the ♀ a little longer and more slender, more convex dorsally, gradually narrowing from the base to the antennae and then gradually widening out again to the apex, densely squamose at the base only, the rest bare with dense fine punctures throughout, two rather irregular dorsal rows of larger shallow punctures from the base to the antennae, and a punctate sulcus above the scrobe containing a row of short erect peg-like scales. Antennae red-brown, the club fuscous, inserted at the middle of the rostrum in the ♀ and a little beyond it in the ♂; the funicle with joints

1 and 2 subequal, 3 and 4 equal and longer than broad, 5 and 6 broader and about as long as broad, 7 still broader and rounded; the club fusiform. Prothorax a little broader than long, nearly parallel-sided in the basal half, then rapidly narrowing with a sinuate curve to the apex; the dorsum gently convex transversely, the apical area rather abruptly depressed below

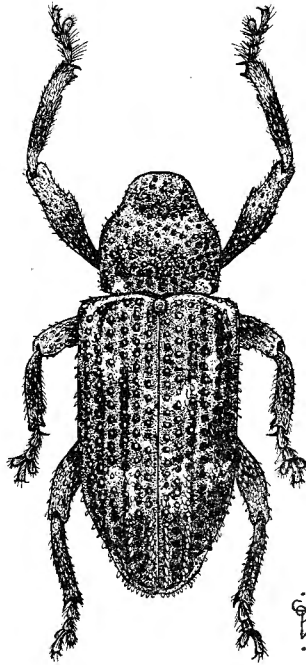


FIG. 1. — *Rhadinomerus cavisquamis* sp. n., ♂.

the disk, the large deep punctures wider than the interspaces, without any median carina. Scutellum and a narrow ring round it with black scales. Elytra rather narrowly oblong-ovate, widest at the roundly rectangular shoulders and very gradually narrowing behind, the subapical depressions distinct; the broad shallow striae containing subquadrate punctures that are lined with concave scales and have a small round whitish scale projecting horizontally over them; the intervals wider than the punctures, 3 and 5 being higher than the others and the suture slightly raised on the declivity; on 3 and 5 there is a row of short erect peg-like setae, varying in colour from grey to blackish and forming groups here and there, the other intervals bearing a single row of isolated setae, there being very few on 2 and 4. Legs with dense grey scales and a broad black band

at the middle of the femora and on the basal half of the tibiae; femora with a small tooth, which varies in development being often much reduced or almost obsolete on the anterior pairs; tibiae straight dorsally, but sinuate at the basal half on the lower edge, the outer end of the uncus with a small sharp angle on the posterior pairs.

Length : 4,2-6,5 mm.

BELGIAN CONGO : Parc National Albert : Ishango, Semliki Valley, 20 ♂, 30 ♀, 21-25.XI.1954 (type); Ishango-Losho, Semliki Valley, 122 ♂, 139 ♀, 26.XI.-3.XII.1954; Kasindi Port, on Lake Edward, 5 ♂, 5 ♀, 23-26.XI.1954; Kanyatsi, on L. Edward, 1 ♂, 30.XI.1954; Lomeru, 1 ♂, 1 ♀, 1.XII.1954.

All these insects were taken on *Euphorbia calycina* by P. JOLIVET.

Rhadinomerus compactus sp. n.

(Fig. 2.)

♂ ♀. Derm dull black, with dense pale brown scaling and very variable blackish markings.

Head separated from the rostrum by a very shallow depression, with strong punctures that are partly obscured by scaling, the frons with a small fovea. Rostrum of the ♂ a little longer than the pronotum, stout, parallel-sided; the dorsum rugulose and densely squamose throughout, with a long narrow median carina on the apical half only; rostrum of the ♀ a little longer and slightly narrowed in the middle, the dorsum densely squamose on the basal half, bare and shiny beyond the antennae, where the punctures are rather unusually strong and close, leaving a broad smooth median line. Antennae red-brown, inserted at about the middle of the rostrum in both sexes; the funicle as in *R. cavisquamis* but shorter and the joints more compact. Prothorax tranverse (7:9), feebly rounded and almost parallel-sided in the basal two-thirds, then rapidly narrowing with a sinuation to the apex; the dorsum nearly flat longitudinally, the apical third being only slightly lower than the disk, the deep punctures only narrowly separated, the interspaces being densely squamose, without any median carina. Scutellum with black scaling. Elytra compact, broad and oblong, parallel-sided from the roundly rectangular shoulders to much behind the middle and broadly rounded behind, the subapical depressions distinct; the shallow striae with separated subquadrate punctures, with a very small horizontal pale scale over each; the intervals a little wider than the punctures, feebly convex and all of the same height, each having a regular row of very short subrecumbent pale setae, which are much more numerous on intervals 3, 5, 7; the scales small, flat and overlapping. Legs with dense grey or brownish scales, with a black

band at the middle of the femora and on the basal half of the tibiae; femora without any tooth; tibia without any basal sinuation beneath, almost parallel-sided dorso-ventrally, the outer end of the uncus with a small sharp spike.

Length : 3,5-5,5 mm.

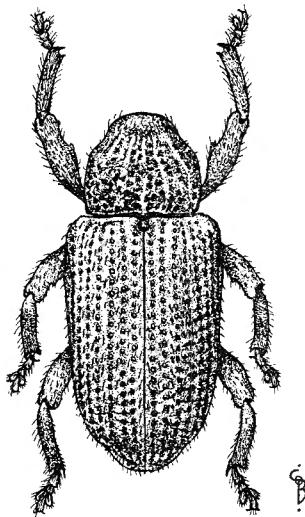


FIG. 2. — *Rhadinomerus compactus* sp. n., ♂.

BELGIAN CONGO : Parc National Albert : Kasindi Port, Lake Edward, 1 ♂ (type), 1 ♀, 26.XI.1954; Ishango-Losho, 2♂, 1 ♀, 26.XI-3.XII.1954; Kahiti, 1 ♀, 30.XI.1954 (all taken by P. JOLIVET).

The Kahiti specimen was taken on *Euphorbia Dawei*; all the others were from *E. calycina*.