

Three new species of the subfamily Sciapodinae from China (Diptera, Dolichopodidae)

Ding YANG

Abstract

Three new species (*Amblypsilopus ancistroides*, *A. ampliatus* and *Chrysosoma insensibilis*) are described from China.

Key words: Dolichopodidae, *Amblypsilopus*, *Chrysosoma*, new species, China.

Introduction

The Chinese Sciapodinae are not well known. Recently the species of the genus *Chrysosoma* GUÉRIN-MÉNEVILLE from China are revised by the author (YANG, in print). Three new species of the subfamily Sciapodinae are described here from China. The types of the new species are mainly deposited in the insect collection of the Beijing Agricultural University, and some paratypes are kept in the Institut Royal des Sciences Naturelles, Brussels.

Amblypsilopus ancistroides sp. nov. (Fig. 1)

Male.

Body length 2.9-3.5 mm, *wing length* 3.6-3.9 mm.

Head metallic green; vertex distinctly excavated. Hairs and bristles on head black, but lower postocular hairs pale, frons with 5-6 long hairs on postero-lateral slope, ocellar tubercle with 2 posterior hairs. Antenna black; flagellum subconical, as long as wide; arista apical, shorter than width of head. Proboscis black with pale hairs; palpus black with pale hairs.

Thorax metallic green. Hairs and bristles on thorax black; 2 strong posterior dc and 3 hairs anteriorly, 3 strong and irregularly paired acr, lateral scutellar bristle absent. Legs dark brown; fore and mid tibia brownish yellow. Hairs on legs black, but coxae with chiefly pale hairs and femora with pale ventral hairs. Fore tarsomere 1-2 somewhat flattened (except base of tarsomere 1) with dense thin pubescence on ventral surface; hind tarsomere 4-5 flattened. Relative lengths of segments (excluding coxae and trochanters) of legs LI 2.6: 3.1: 1.5: 0.9: 0.6: 0.3: 0.3; LII 3.0: 3.7: 2.8: 0.8: 0.7: 0.3: 0.3; LIII 4.0: 5.2: 2.2: 1.0: 0.4: 0.2: 0.2.

Wing hyaline, veins dark brown; M indistinct, cross vein m-cu straight. Halter dark brown.

Abdomen metallic green with chiefly black hairs. Male genitalia (Fig. 1): Epandrium somewhat narrow apically, surstylus medially concave with a curved apico-lateral projection; cercus moderately long, its apical margin with thick bristles; hypandrium with a long lateral arm; aedeagus straight apically.

Female.

Body length 3.0-3.2 mm, *wing length* 3.7-3.8 mm. Similar to male except as follows: Frons with 1 strong anterior bristle on postero-lateral slope. 4 strong dc. Mid tibia with 1 posterior dorsal bristle at base and 2 ventral bristles on median portion; hind tibia with 1 lateral bristle at base.

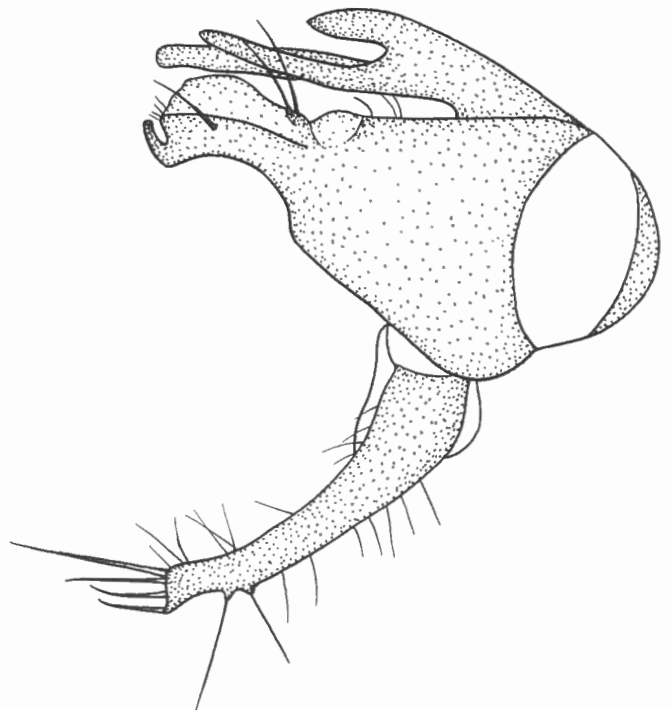


Fig. 1. — *Amblypsilopus ancistroides* sp. nov. - Male genitalia, lateral view.

Holotype ♂, allotype ♀, paratypes 1♂ 7 ♀♀, Hubei: Shiyan, 21.VI.1984, Xinli WANG. Paratypes 1♂, Shaanxi: Chouzhi, 13.VII.1962, Fasheng LI; 1♂, Beijing: Haidian, 18.VII.1973, Chi-kun YANG.

Distribution. China (Hubei, Shaanxi, Beijing).

Remarks. This new species is similar to *A. imitans* (BECKER) from Taiwan. It may be separated from the latter by the fore tarsomeres 1-2 (except base of tarsomere 1) flattened. In *A. imitans*, the fore tarsus is normal.

Amblypsilopus ampliatus sp. nov.
(Fig. 2)

Male.

Body length 3.7-5.0 mm, *wing length* 4.4-4.5 mm.

Head metallic green; vertex distinctly excavated. Hairs and bristles on head black, but lower postocular hairs pale; frons with 1 moderately long hair on postero-lateral slope, ocellar tubercle with 2 posterior hairs. Antenna black; flagellum subconical, as long as wide; arista apical, shorter than width of head. Proboscis yellow with pale hairs; palpus yellow with chiefly pale hairs.

Thorax metallic green. Hairs and bristles on thorax black; 2 strong posterior dc and 3 hairs anterior, 1-2 strong and irregularly paired acr, lateral scutellar bristles absent. Legs yellow; fore coxa yellow, mid and hind coxae blackish; tarsomeres 2-5 dark brown. Hairs on legs black, but coxae with only pale hairs and femora with pale ventral hairs. Mid tibia with 1 short posterior dorsal bristle at base and 4 short anterior dorsal bristles. Relative lengths of segments of legs LI 2.8: 3.6: 4.1 : 1.0: 0.9: 0.6: 0.3; LII 3.0: 4.2: 4.6: 1.0: 0.8: 0.4: 0.3; LII 3.9: 6.8: 3.2: 1.3: 0.8: 0.5: 0.3.

Wing hyaline, veins brown; M2 distinct only at base, cross vein m-cu straight. Halter yellow.

Abdomen metallic green with chiefly black hairs. Male genitalia (Fig. 2): Epandrium much longer than wide; surstylus nearly quadrate, separated from epandrium, with a single sclerite at base; hypandrium with a long lateral arm (which is acute and weakly curved apically); aedeagus straight.

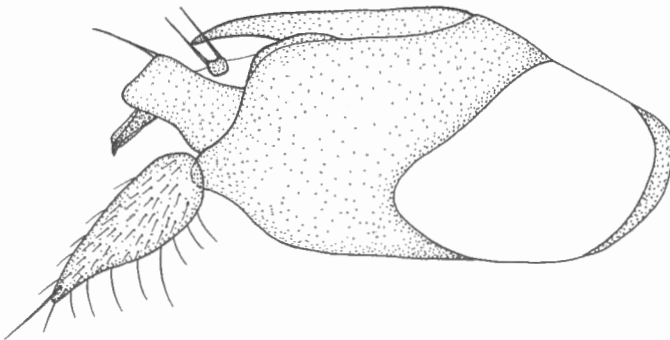


Fig. 2. — *Amblypsilopus ampliatus* sp. nov. - Male genitalia, lateral view.

Female. Unknown.

Holotype ♂, paratypes 2♂♂, Xizang: Ziayu (1,570 m), 24-25.VI.1978, Fasheng LI.

Distribution. China (Xizang).

Remarks. This new species is similar to *A. humilis* (BECKER) from Taiwan. It may be distinguished from the latter by having the tarsomeres 2-5 dark brown. In *A. humilis*, the legs are yellow (BICKEL, 1994).

Chrysosoma insensibilis sp. nov.
(Fig. 3)

Male.

Body length 4.9 mm, *wing length* 5.6 mm.

Head metallic green; vertex distinctly excavated. Hairs and bristles on head black, but lower postocular hairs pale; frons with 1 short anterior hair and 1 strong bristle on postero-lateral slope, ocellar tubercle with 2 very short posterior hairs. Antenna black; flagellum subconical, nearly as long as wide; arista apical, slightly shorter than head + thorax. Proboscis dark yellow with brownish hairs; palpus dark yellow with chiefly pale hairs.

Thorax metallic green. Hairs and bristles on thorax black; 2 strong posterior dc, 3-4 long irregularly paired acr. Legs yellow; fore coxa yellow, mid and hind coxae black, tarsi dark brown. Hairs on legs black, but coxae with only pale hairs, fore femur with 1 weak pale ventral bristle at base. Fore tibia with 1 dorsal bristle at base, tarsomere 1 with 1 basal ventral bristle; mid tibia with 1 dorsal bristle at base; hind tibia with 6 dorsal bristles. Relative lengths of segments of legs LI 3.3: 3.6: 3.0 : 1.2: 0.6: 0.7: 0.3; LII 4.0: 5.8: 3.9: 1.2: 1.1: 0.6: ?; LIII 4.8: 6.2: 2.6: 1.3: 1.0: 0.5: 0.3.

Wing hyaline, veins dark brown; cross vein m-cu weakly S-shaped. Halter yellow.

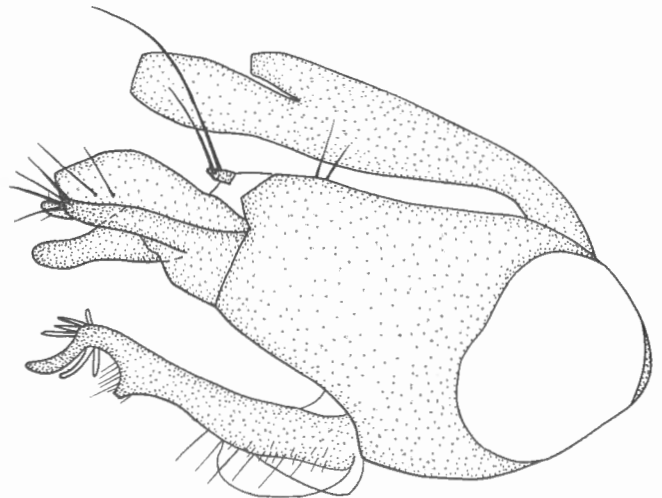


Fig. 3. — *Chrysosoma insensibilis* sp. nov. - Male genitalia, lateral view.

Abdomen metallic green with chiefly black hairs. Male genitalia (Fig. 3): Epandrium narrow apically, surstylus medially concave with some strong hairs on lateral apex; cercus moderately long with thin and curved apex; hypandrium with rather thick lateral arm; aedeagus narrow apically.

Female.

Body length 3.9-4.1 mm, *wing length* 5.0-5.6 mm. Similar to male except as follows: Frons with 1 strong anterior bristle. 3 long and irregularly paired acr, 1 short anterior dc and 2 long posterior dc; lateral scutellar bristle very short. Fore femur with 2 weak pale ventral bristles at base, tibia with 1 dorsal bristle at base; mid tibia with 1 posterior dorsal bristle at base, 2 anterior dorsal bristles on basal portion and 2 ventral bristles on median portion; hind tibia with 1 anterior dorsal bristle at base and 6 posterior dorsal bristles.

Holotype ♂, allotype ♀, paratype 1 ♀, Xizang: Bomi (2.300 m), 28-29.VII.1978, Fasheng LI.

Distribution. China (Xizang).

Remarks. This new species is somewhat similar to *C. floccosum* BECKER from Taiwan. It may be separated from the latter by the yellow femora. In *C. floccosum*, the femora are black (BECKER, 1922).

Acknowledgements

Thanks are due to Dr. P. GROOTAERT, (Institut Royal des Sciences Naturelles, Brussels), Dr. H. ULRICH (Zoologisches Forschungsinstitut Museum A. Koenig, Bonn), Dr. M. SAT-fe- (Rishiri Town Museum, Hokkaido), Prof. Chi-Kun YANG and Mr Fasheng LI (Beijing Agricultural University, Beijing) for their help in many ways.

References

- BECKER, T., 1922. Dipterologische Studien, Dolichopodidae der indo-australischen Region. *Capita Zoologica*, 1(4): 1-247.
- BICKEL, D.J., 1994. The Australian Sciapodinae (Diptera: Dolichopodidae), with a review of the Oriental and Australasian Faunas, and a World Conspectus of the Subfamily. *Records of the Australian Museum, Supplements*, 21: 1-394.
- YANG, D., in print. Two new species of *Chrysosoma* (Diptera, Dolichopodidae) from China. *Studia Dipterologica*.

Department of Entomology
Beijing Agricultural University
Beijing 100094, P.R. China