

## *Erythmelus soykai* sp. n. from Austria (Hymenoptera, Mymaridae)

by Atanas D. DONEV

### Abstract

*Erythmelus soykai* sp. n. is described and illustrated on the basis of two specimens, from the collection of W. SOYKA, preserved in Institut royal des Sciences naturelles de Belgique, Bruxelles.

**Key Words:** Insecta, Hymenoptera, Mymaridae, *Erythmelus soykai*, new species, Austria.

### Résumé

*Erythmelus soykai* sp. n. est décrite et représentée à partir de deux spécimens de la collection W. SOYKA, conservés à l'Institut royal des Sciences naturelles de Belgique, à Bruxelles.

**Mots-clefs:** Insecta, Hymenoptera, Mymaridae, *Erythmelus soykai*, Autriche.

### *Erythmelus* (*Enaesius*) *soykai* sp. n. (fig. 1-5)

*Derivatio nominis.* The new species is named in honour of the well – known specialist in Mymaridae Dr. Walter SOYKA.

*Locus typicus:* Austria. **Holotype** – female; original labels: “*Erythmelus*, *Enaesius* o *magnus* (Soyka), det. W. Soyka; “Para-Type”; R. I. Sc. Nat. Belg., I. G. 17. 724”; “J. Ghesquière, vid., 1951 s. quide *Erythmelus*”; “Hundsheim am Fenster: aus Hen. leg. Soyka, Juli 1943, coll. Soyka, in Canadab. 1944”. **Paratype** – female; original labels: “*Erythmelus*, *Enaesius* o *magnus* (Soyka). det. W. Soyka”; “J. Ghesquiere, vid., 1951! m.s. quide *Erythmelus*”; “R. I. Sc. Nat. Belg. I. G. 17. 496”; “Hundsheim am Fenster. aus Hen. 16. juli. 1943, leg. Soyka, Coll. Soyka, In. Canadab. 1944”.

The holotype and the paratype are preserved in Institut royal des Sciences naturelles de Belgique, Bruxelles.

*Diagnosis:* *Erythmelus soykai* sp. n. is closely related to *E. agilis* ENOCK and *E. spinosus* MATHOT, having sensory ridges of  $F_4$  and  $F_6$  like them.

*E. soykai* sp. n. differs from the above mentioned species in having two sensory ridges of  $F_5$ , and ratio FWL/FWW = 4 (*E. agilis* ENOCK = 5.2; *E. spinosus* MATHOT = 6).

*Description:* Female. General color brown; head and metasoma dark brown. Lateral parts of the mesoscutum, mesopleura and

apical part of fore and hind coxae yellow-brown. Basal part of the metasoma yellowish.

Head about as wide as mesosoma or slightly narrower, frontally flattened. Antenna (fig. 1) sparsely setose. Scape long, nearly about head height, 3,2 x as long as pedicel. Scape and pedicel equal width.  $F_1$ : a little shorter than pedicel.  $F_2$  equal length with pedicel.  $F_3$  and  $F_4$  (fig. 2) equal length a little longer than  $F_2$ ;  $F_4$ : with one sensory ridge.  $F_5$  and  $F_6$  equal length, a little longer than  $F_4$ , both of them with two sensory ridges. Club longer than  $F_5$  and  $F_6$  taken together, 3 x as long as its width, with 5 sensory ridges.

Mesosoma: 0,70 x as long as metasoma. Postscutellum laterally with fine longitudinal sculpturing. Pronotum and scutellum with a pair of long setae. Metanotum (fig. 3) projecting out over propodeum.



Fig. 1. – Antenna.

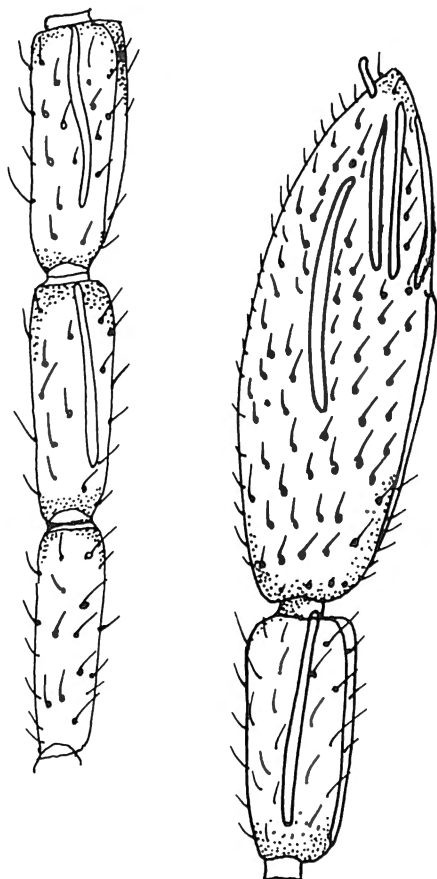
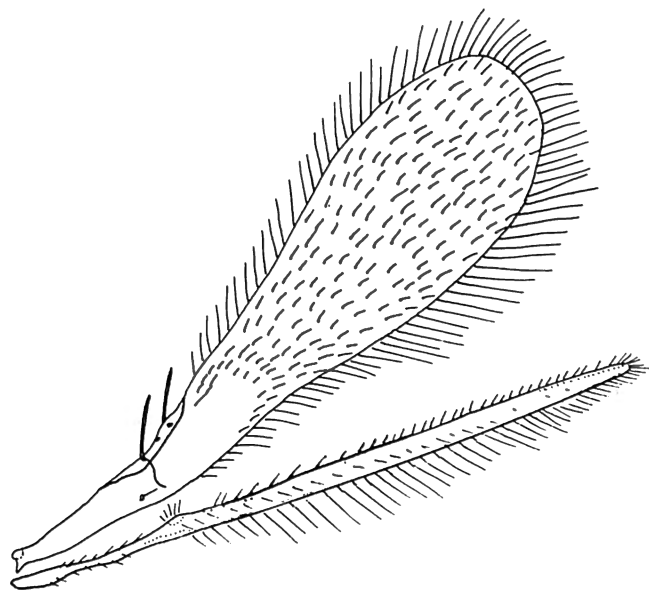
Fig. 2. - F<sub>2</sub> - F<sub>6</sub> and Club.

Fig. 4. - Fore - and Hindwing (right side).

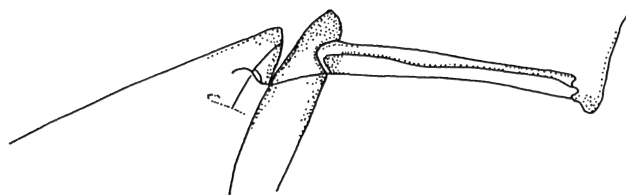


Fig. 3. - Metanotum (lateral view).

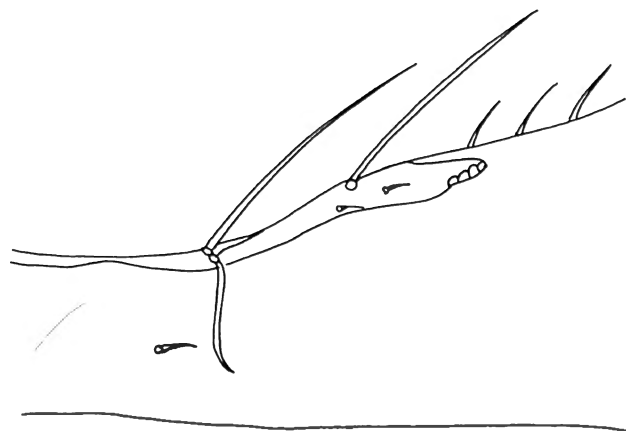


Fig. 5. - Forewing in marginal vein.

Forewing (fig. 4) a little longer than body length, 3,5 x as long as its width, with twenty rows of setae at the broadest part. Proximal and distal macrochaeta equal length (fig. 5). The two microchaetae situated over distal macrochaeta; hypochoaeta shorter than wing width at vein. Marginal fringe with longest cilia about 0,58 of the wing width. FWL/FWW ratio about 4.

Hindwing (fig. 4) a little shorter than forewing. Disc with one row of setae.

Fore- and hindtibia: with 5 or 6 rows of minute spines.

Metasoma: conically shaped, with well developed hypopygium, covered with small denticles. Ovipositor equal length with metasoma; its apex projecting from metasomal apex about 1/8 of its length.

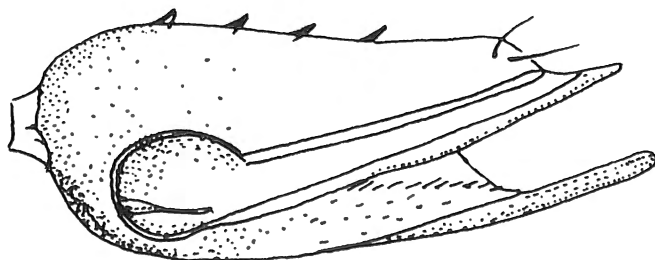


Fig. 6.

*Measurements (in  $\mu\text{m}$ ):* Body: 903; head: 92; mesosoma: 366; metasoma: 445; ovipositor and hypopygium: 409.

Antenna (length): Scape: 165; Pedicel: 51; F<sub>1</sub>: 48; F<sub>2</sub>: 52; F<sub>3</sub>: 58; F<sub>4</sub>: 65; F<sub>5</sub>: 65; F<sub>6</sub>: 68; Club: 140.

Forewing: Length: 945; width: 238; marginal cilia: 128.

Hindwing: Length: 866; width: 49; marginal cilia: 183.

### Acknowledgements

I am grateful to Dr. P. DESSART of Institut royal des Sciences naturelles de Belgique, Bruxelles., for loan of specimens of *Erythmelus*.

<i>Legs:</i>	<i>Coxa</i>	<i>Femur</i>	<i>Tibia</i>	<i>Tarsus</i>
I	152	244	213	275
II	91	213	305	305
III	170	244	323	336

*Male unknown.*

DONEV, A. D.  
University of Plovdiv "Paisii Hilendarski",  
Department of Zoology,  
Bu-4000 Plovdiv,  
Bulgaria