

## Studies on Indian *Dolerini* (Hymenoptera: Tenthredinidae)

by Malkiat S. SAINI and DEVINDER SINGH

### Abstract

The generic status of five Indian species of *Loderus* (*L. mira*, *L. ferruginosa*, *L. manalii*, *L. darjeelingi* and *L. infuscata*) is changed and they are brought under *Dolerus*. An additional species, *Dolerus tangmargensis* sp. nov., is described and a key to the Indian species of this genus is provided.

**Key-words:** India, Hymenoptera, Tenthredinidae, Dolerini.

### Résumé

Les espèces *Loderus mira*, *L. ferruginosa*, *L. manalii*, *L. darjeelingi* et *L. infuscata* sont transférées dans le genre *Dolerus*. Une espèce nouvelle, *Dolerus tangmargensis* est décrite et une clé est donnée pour les espèces indiennes du genre *Dolerus*.

**Mots-clés:** India, Hymenoptera, Tenthredinidae, Dolerini.

### Introduction

The work on the description of Indian *Dolerini* was initiated by Muche (1983) by publishing a species of *Loderus* namely *L. mira*. Saini & Singh (1987) described four more new species of this genus from India. In the light of Goulet's (1986) exhaustive study on the classification and phylogeny of this tribe, all the five species from India deserve to come under *Dolerus* Panzer, the status of *Loderus* Konow having been reduced to a subgenus. Following his key to the subgenera, the species *D. ferruginosa* (Saini & Singh), *D. manalii* (Saini & Singh), *D. darjeelingi* (Saini & Singh) and *D. tangmargensis* sp. nov. belong to subgenus *Dicrodolerus* Goulet. *D. infuscata* (Saini & Singh) fails to conform to any of his subgenera and probably belongs to a new subgenus. The subgeneric position of *D. mira* (Muche) could not be decided due to want of material. The types are in the collection of the authors, in IARI, New Delhi (India) and in the K.B.I.N., Brussels (Belgium).

### *Dolerus tangmargensis* sp. nov.

#### Female:

Average length, 7.2 mm. Body reddish yellow, black are: antennae, head except labrum and mandible, spot on

posterior slope of mesoscutellum, diffused spot on post-tergite, metascutellum, stripe along mesopleural suture, mesosternum, pro- and mesotarsi except basal joints, metatarsi. Wings smoky hyaline, venation and stigma dark brown to black.

Antennae 1.8 × head width, slightly incrassate in middle, segments 3 and 4 in ratio 3:2. Clypeus (Fig. 4) roundly incised upto half of its medial length. Labrum with rounded anterior margin. Malar space 0.5 × diameter of antennal socket. LID: IDMO:EL = 2.0:1.8:1.3. OOL:POL:OCL = 1.5:1.0:1.8. Frontal and ocellar areas raised above level of eyes. Supraantennal tubercles indistinct. Circum-, inter- and postocellar furrows inconspicuous. Lateral furrows sharp, converging posteriorly. Postocellar area subconvex, broader than long in ratio 4:3 at maximum width. Head narrowing behind eyes. Mesoscutellum slightly roundly raised. Post-tergite carinate. Subapical tooth of claw (Fig. 5) much shorter than apical. Metabasitarsus shorter than remaining joints combined.

Head, mesonotum and scutellum with large and deep punctures. Post-tergite faintly wrinkled. Mesopleuron rugose. Mesoscutellum shining with scattered punctures. Abdomen impunctate. Lancet as in Fig. 2.

#### Male:

Average length, 7.0 mm. Similar to female except: further black are: anterolateral spot on pronotum, spot on mesonotum lateral to scutellum, mesoscutellum and post-tergite entirely, mesopleuron, dorsal spot on tip of abdomen, apices of tibiae. Penis valve as in Fig. 1. Gonoforceps as in Fig. 3.

#### Holotype:

Female, Jammu and Kashmir State, Tangmarg, 2000 m, June 20, 1987, India.

#### Paratypes:

14 ♀♀, 5 ♂♂, with same data as for holotype.

#### Population variation:

The black colour in the studied sample varies considerably

and may also include: spot on mesonotal middle lobe, basal half of propodeum, apical three abdominal terga in male.

**Key to the Indian species of *Dolerus* Panzer**

- 1. Anterior margin of clypeus incised upto half of its medial length ..... 2
- Anterior margin of clypeus only slightly incised ..... *D. infuscata* (Saini & Singh)
- 2. Tegulae black ..... 3
- Tegulae yellow ..... 4
- 3. Abdomen entirely black ..... *D. darjeelingi* (Saini & Singh)
- Distal margin of terga 2-7 whitish and of 8 and 9 brownish ..... *D. mira* (Muche)
- 4. Abdomen black, without ferruginous part ..... *D. manalii* (Saini & Singh)
- At least part of abdomen ferruginous ..... 5
- 5. Mesonotum black; metafemur black; abdominal segments 7-9 black ..... *D. ferruginosa* (Saini & Singh)
- Mesonotum ferruginous, at the most with black spots; metafemur ferruginous; abdomen without black at least in female ..... *D. tangmargensis* sp. nov.

**Acknowledgements**

The authors are indebted to Dr. D.R. Smith, USDA (Washington, DC), for his helpful suggestions.

**Abbreviations**

El — Eye length; IDMO — Interocular distance at level of median ocellus; LID — Lower interocular distance; OCL — Ocello-occipital line; OOL — Ocello-ocular line; POL — Postocellar line.

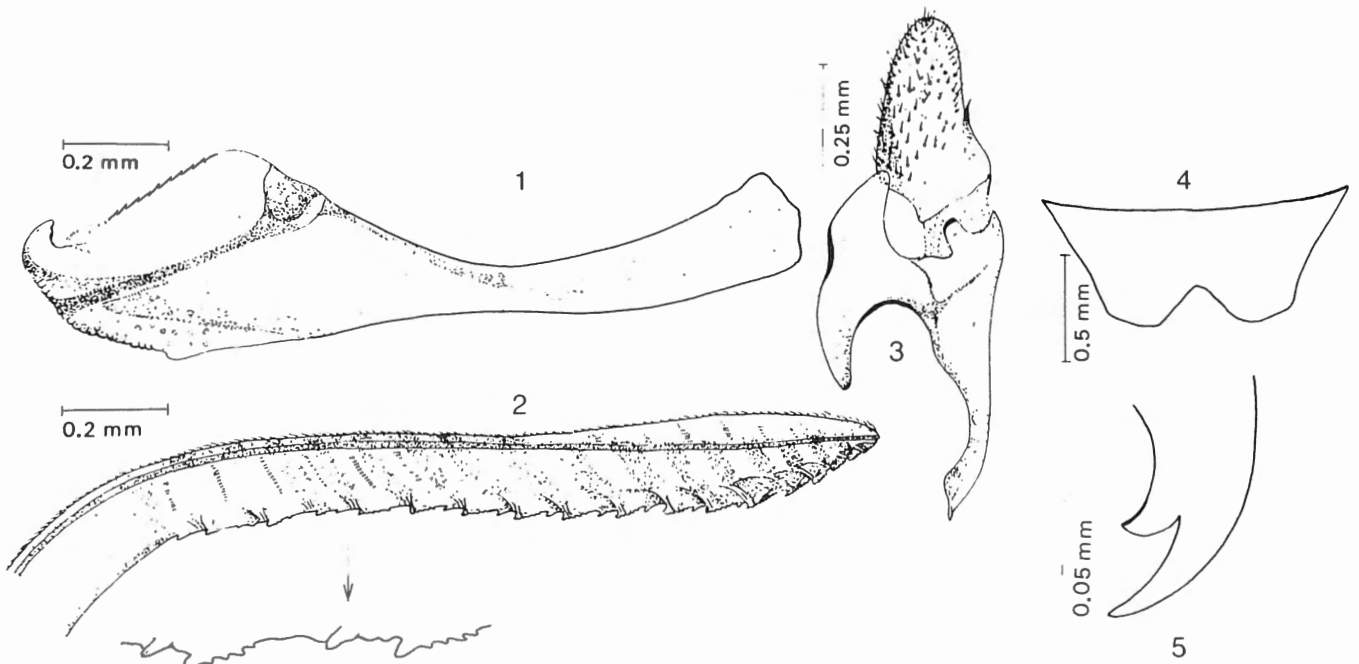
**References**

GOULET, H., 1986. The genera and species of the nearctic *Dolerini* (Symphyta: Tenthredinidae: Selandrinae): Classification and phylogeny. *Memoirs of the entomological society of Canada*, 135: 1-208.

MUCHE, W.H., 1983. Die von Herrn Dr. Wittmer in Indien und Bhutan gesammelten Blattwespen, mit Beschreibung von sechs neuen Arten der Tenthredinidae (Hymenoptera, Symphyta). *Reichenbachia Staatliches Museum für Tierkunde, Dresden*, 21 (29): 167-180.

SAINI, M.S. & SINGH, D., 1987. Four new species of *Loderus* Konow from India with a key to the oriental species of this genus (Hymenoptera, Tenthredinidae). *Deutsche entomologisches Zeitschrift*, 34 (4-5): 367-371.

Malkiat S. SAINI and DEVINDER SINGH  
 Department of Zoology  
 Punjabi University Patiala  
 147002, India.



Figs 1-5. *Dolerus tangmargensis* sp. nov.  
 1. Penis valve 2. Lancet 3. Gonoforceps 4. Clypeus 5. Tarsal claw.