

BULLETIN

DU

Musée royal d'Histoire
naturelle de Belgique

Tome IX, n° 30.

Bruxelles, octobre 1933.

MEDEDEELINGEN

VAN HET

Koninklijk Natuurhistorisch
Museum van België

Deel IX, n° 30.

Brussel, October 1933.

SOME NEW SPECIES OF LYMANTRIIDAE
FROM MENADO, CELEBES,

by C. L. COLLENETTE (London).

By courtesy of the Director of the Musée royal d'Histoire naturelle de Belgique, I have received for determination a number of *Lymantriidae* from the Celebes. From among these, I have selected the following for description.

Ridgway's *Color Standards and Color Nomenclature* 1912 has been employed in the colour descriptions.

Leucoma monobalia sp. nov.

♂. Palpus mummy brown, on the inner side lighter. Antennal shaft pale pinkish buff, pectinations tawny olive. Head mummy brown, mixed on the vertex with white. Thorax, abdomen above and beneath, pectus and legs white, with a patch of mummy brown proximally on tibia and tarsus of fore leg and tarsus of middle leg. Fore-wing white, iridescent, with a « watered silk » effect over the whole wing; a fuscous spot on the centre of the discocellulars; fringe white, mixed between veins R^5 and Cu^2 with Saccardo's umber, this colour to a slight extent invading the wing area interneurally. Hind-wing and fringe white, with a slight admixture, in some specimens, of Saccardo's umber on the fringe between veins M^1 and Cu^2 . Underside of both wings, and fringes, white.

Expanse : ♂♂ 33-36 mm.

1 ♂ (holotype) and 2 ♂♂ (paratypes), North Celebes, Tondano Menado, Tonsea Lama, 6th June 1929, and 2 ♂♂ (para-

types) Tonsea Lama, 12th May; 2 ♂♂ (paratypes) Menado; all collected by Van Braeckel. Also, in the British Museum collection, 1 ♂ (paratype), North Celebes.

This species rather closely resembles *Leucoma flavescens* MR., but may be distinguished at once by the presence of the fuscous spot on the discocellulars. It is larger than *L. phrika* COLLNT., with considerably less Saccardo's umber on the termen. The fore-wing is whiter and less shining than in *L. riguata* SNELL.

Euproctis psamma sp. nov.

(Fig. 1.)

♀. Palpus very short, antimony yellow. Antennal shaft tawny olive, the pectinations darker. Head, and thorax anteriorly, antimony yellow; thorax posteriorly drab. Abdomen above and beneath hair brown, anal tuft antimony yellow. Legs pinkish buff, mixed on the femora with antimony yellow. Pectus pinkish

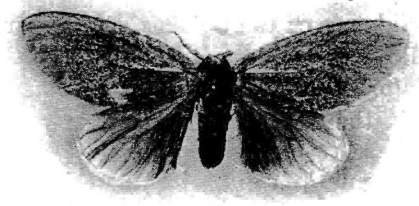


Fig. 1. — *Euproctis psamma* sp. nov. 1/1.

buff. Fore-wing light buff, irrorated over the whole wing, excepting the terminal and costal areas, with Saccardo's umber; fringe light buff. Hind-wing and fringe light buff, the inner marginal area shaded with Saccardo's umber. Underside of both wings, and fringes, light buff to warm buff.

Expanse : ♀♀, 47-56 mm.

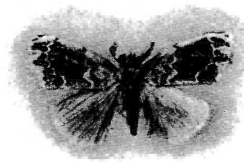
1 ♀ (holotype) and 2 ♀♀ (paratypes), Celebes, Menado, Van Braeckel; also, in the British Museum collection, 2 ♀♀ (paratypes), North Celebes, and 1 ♀ (paratype), Minahassa, Tangarie, 11th March 1920, P. J. van den Bergh.

Resembles the ♀ of *Euproctis lodra* MR. and also of *Perina nuda* FABR. It will not be possible to establish its position accurately until the ♂ sex is known.

Euproctis menadoensis sp. nov.

(Fig. 2.)

♂. Palpus cinnamon brown, at the tip lighter. Antennal shaft light buff, pectinations ochraceous buff. Head and thorax light buff mixed with cinnamon brown. Abdomen discoloured in the type, but apparently warm buff, beneath light buff. Pectus and legs light buff, mixed on the tarsi with warm buff. Fore-wing cinnamon brown; costal area light buff; a large subbasal patch of antimony yellow below the cell; a conspicuous sinuous light buff antemedial fascia, reaching the inner margin at one-third; a patch of ochraceous tawny on the discocellulars; a crenate (concavities terminad) light buff postmedial fascia, reaching the inner margin at two-thirds; in the terminal area, patches of light buff invading the wing at the apex, and at veins M^2 and Cu^1 ; veins in the terminal area antimony yellow; fringe light buff mixed with warm buff. Hind-wing warm buff, costal area

Fig. 2. — *Euproctis menadoensis* sp. nov. 1/1.

somewhat lighter; fringe light buff. Underside of fore-wing light buff; a large three-cornered patch of Prout's brown occupying the centre of the wing; costal area from base to two-thirds ochraceous tawny; veins in the terminal area warm buff; fringe light buff mixed with warm buff. Underside of hind-wing light buff tinged with warm buff; a small patch of Prout's brown on the discocellulars; fringe light buff.

Expanse : 29 mm.

1 ♂ (holotype), Celebes, Menado, Van Braeckel.

May be placed near to *Euproctis chrysoparypha* COLLNT., which in markings it somewhat resembles.

Lymantria inordinata Wlkr. (?)

(Fig. 3.)

Lymantria inordinata WLKR., List Lep. Ins. B. M., XXXII, p. 368 (1865).

This species was described from a single male, now in the Oxford Museum, from Makian, an island to the south of Ternate, some 150 miles to the east of Menado.

In the present collection is a single female from Menado (Van Braeckel), with an expanse of 71 mm., which I have little doubt

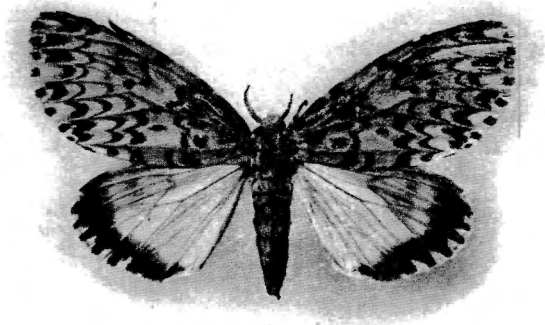


Fig. 3. — *Lymantria inordinata* Wlkr. ? 1/1.

is the female of *L. inordinata*. In the pattern of the fore-wing it resembles *L. fumida* BTLR., but differs in certain small details, and has the markings much more distinct. The abdomen above is light coral red, the hind-wing buff pink with a broad subterminal band of fuscous produced interneurally to the fringe.