

Institut royal des Sciences  
naturelles de Belgique

BULLETIN

Tome XXX, n° 15  
Bruxelles, avril 1954.

Koninklijk Belgisch Instituut  
voor Natuurwetenschappen

MEDEDELINGEN

Deel XXX, n° 15  
Brussel, April 1954.

---

A NEW SPECIES OF AFRICAN RUGILUS  
(COL. STAPHYLINIDÆ),

by Horace R. LAST (Banstead).

---

*Rugilus Fageli* sp. n.

Black, except the postero-external angles of the elytra, the antennæ, the legs and labrum.

It is very similar to *R. crassus* FAGEL, but differs in the following details. It is slightly smaller, the puncturation of the head and the elytra are coarser, the eyes are a little smaller and more convex, the temples equal to the longitudinal diameter of the eyes. The elytra do not exhibit the same bronzed appearance. The ædeagus also resembles that of *R. crassus* but the differences will be seen in the accompanying figures. Head large, transverse, posterior angles rounded, broader than the thorax and with dense but fine umbiculate punctures and with a small bare shining spot on the vertex. Eyes large, convex, with their longitudinal diameter equal to the temples. Labrum large, shagreened and rounded with two central teeth; the anterior margin reddish-yellow with numerous yellow setæ. Along the clypæus and the inner margins of the eyes are situated a few black setæ. Antennæ dark red, apex of last segment lighter. Second segment half the length of the first, third segment longer, three quarters the length of the first, segment four equal to the second, segment five slightly shorter than four, segments seven to ten equal in length but slightly shorter than five, segment eleven slightly longer and acuminate.

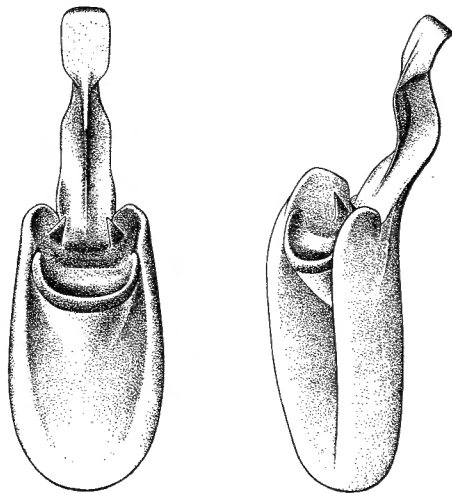


Fig. 1. — *Rugilus Fageli* sp. n. ( $\times 50$  ab.).  
Lateral and ventral views of aedeagus.

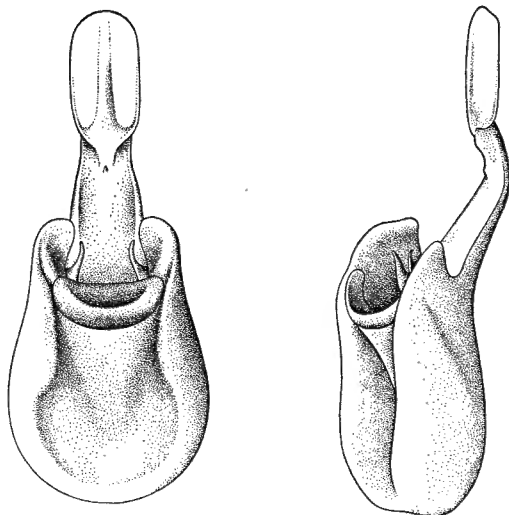


Fig. 2. — *Rugilus crassus* (FAGEL) ( $\times 50$  ab.).  
Lateral and ventral views of aedeagus.

Maxillary palpi dark red. Thorax as long as broad; anterior margin strongly rounded; widest at the anterior angles which are situated at the anterior third; gradually converging to the posterior margin which is narrowly bordered; a raised impunctate middle line extends for the anterior fourth. Elytra quadrate, broader than pronotum, as broad as the head at the shoulders, rather rounded at the sides and broadest in the middle, densely punctured. Postero-external angles yellow, and with posterior margin, rounded to the sutural angle. Suture bordered, borders widest in the centre. Hindbody rather slender giving the elytra a bulky appearance. Tergites punctured at their extreme bases, otherwise finely shagreened and with fine pubescence; paratergites present except for the apical pair. ♂ with apical margin of eighth tergite acuminate, and with apical margin of corresponding sternite with a small central emargination. Length 6.5 mm.

Natal: Qudeni Forest, dung 3-IX-49, taken by Dr. A. H. NEWTON. Type ♂ and paratypes ♂♂ in my collection. Paratype in the collection of Institut royal des Sciences naturelles de Belgique.

I originally had this species in my collection as *Rugilus (Stilicus) spectabilis* BERNHAUER, and am indebted to M. FAGEL of Brussels for pointing out the error and I have much pleasure in naming this new species after him and in recognition of the valuable work he has done on the genus.

---

AD. GOEMAERE, Imprimeur du Roi, 21, rue de la Limite, Bruxelles