

PLATE 1

- Fig. 1 : *Pseudomasia trinema* DE CONINCK 1969. 500 ×.
Quenast A1a, +75 m, slide 6.
- Fig. 2 : *Pseudomasia trinema* DE CONINCK 1969. 500 ×.
Quenast A1a, +75 m, slide 5.
- Fig. 3 : *Pseudomasia trinema* DE CONINCK 1969. 500 ×.
Quenast A2, +75 m, slide 4.
- Fig. 4 : *Deflandrea oebisfeldensis* ALBERTI 1959. 500 ×.
Overijse, +27 m, slide 3.
- Fig. 5 : *Deflandrea oebisfeldensis* ALBERTI 1959. 500 ×.
Quenast A4, +77 m, slide 5.
- Fig. 6 : *Deflandrea oebisfeldensis* ALBERTI 1959. 500 ×.
Quenast A1b, +75 m, slide 4.
- Fig. 7 : *Trigonopyxidia ginella* (COOKSON & EISENACK 1960). 500 ×.
Quenast B7, +77 m, slide 1.
- Fig. 8 : *Trigonopyxidia ginella* (COOKSON & EISENACK 1960). 500 ×.
Quenast B7, +77 m, slide 3.
- Fig. 9 : *Trigonopyxidia ginella* (COOKSON & EISENACK 1960). 500 ×.
Overijse, +33.7 m, slide 4.
- Fig. 10 : *Trigonopyxidia ginella* (COOKSON & EISENACK 1960). 500 ×.
Quenast B8, +77 m, slide 1.
- Fig. 11 : *Wetzeliella astra* DENISON 1978. 500 ×.
Quenast A4, +77 m, slide 5.
- Fig. 12 : *Wetzeliella astra* DENISON 1978. 500 ×.
St. Maur G240, +69.5 m, slide 5.
- Fig. 13 : *Thalassiphora delicata* WILLIAMS & DOWNIE 1966. 500 ×.
Quenast A6, +79 m, slide 2.
- Fig. 14 : *Phthanoperidinium crenulatum* (DE CONINCK 1976). 500 ×.
Overijse, +38.5 m, slide 2.
- Fig. 15 : *Apectodinium hyperacanthum* (COOKSON & EISENACK 1965). 500 ×.
Overijse, +33.7 m, slide 5.
- Fig. 16 : *Phthanoperidinium crenulatum* (DE CONINCK 1976). 500 ×.
Quenast B8, +77 m, slide 3.
- Fig. 17-19 : *Phthanoperidinium crenulatum* (DE CONINCK 1976). 500 ×.
Quenast A4, +77 m, slide 4.
- Fig. 20 : *Dracodinium solidum* GOCHT 1955. 500 ×.
Kallo, -329.5 m, slide 2.
- Fig. 21 : *Thalassiphora delicata* WILLIAMS & DOWNIE 1986. 500 ×.
Quenast A6, +79 m, slide 2.
- Fig. 22 : *Apectodinium hyperacanthum* (COOKSON & EISENACK 1965). 500 ×.
Tielt, -101.5 m, slide 3.

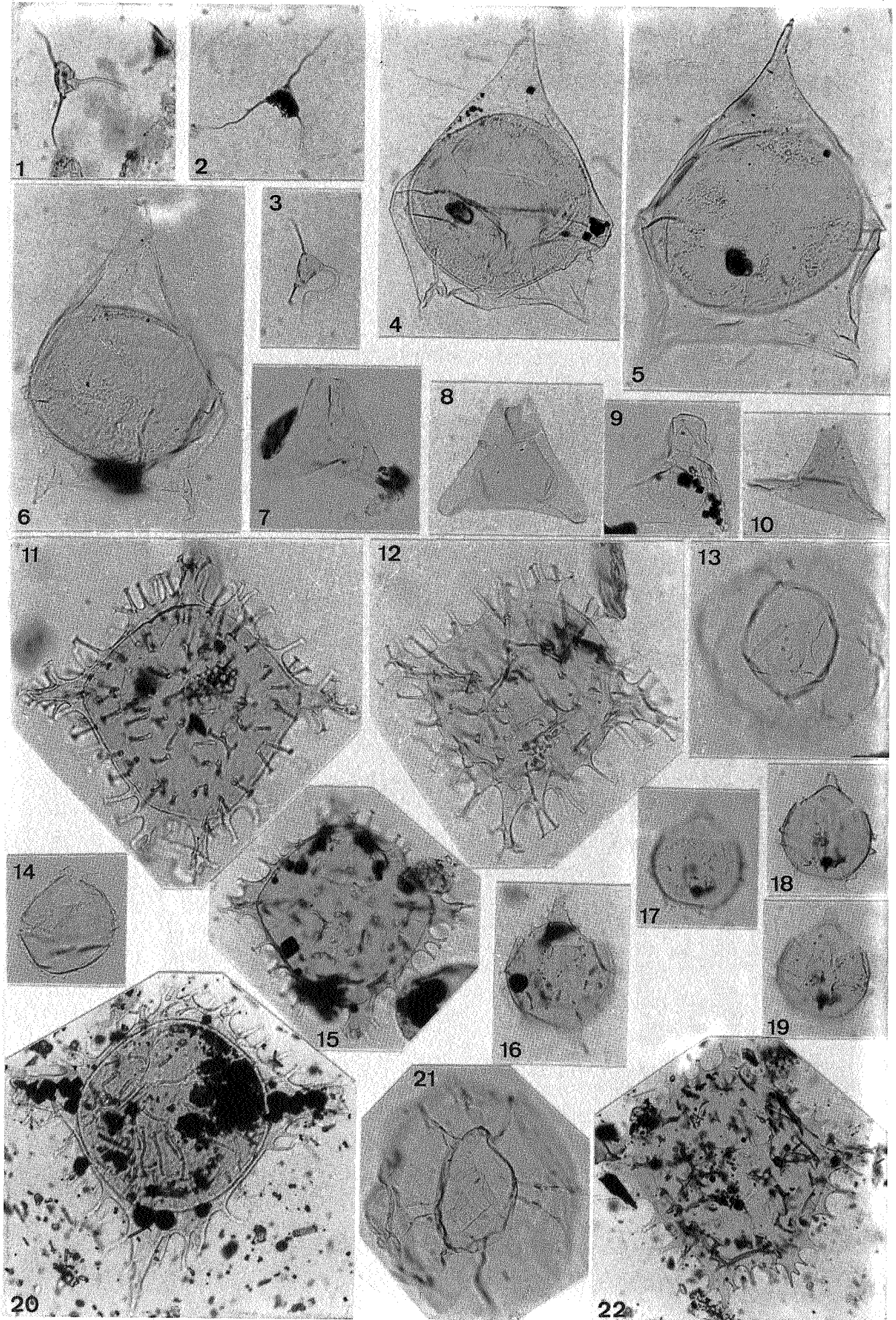


PLATE 2

- Fig. 1 : *Adnatosphaeridium robustum* (MORGENROTH 1966). 500 ×.
St. Maur G240, + 69.5 m, slide 1.
- Fig. 2 : *Wetzeliella meckelfeldensis* GOCHT 1969. 500 ×.
Quenast B8, + 77 m, slide 1.
- Fig. 3 : *Kallosphaeridium brevibarbatum* DE CONINCK 1969. 500 ×.
Overijse, + 38.5 m, slide 3.
- Fig. 4 : *Kallosphaeridium brevibarbatum* DE CONINCK 1969. 500 ×.
Mons-Ghlin G245, + 49.3 m, slide 4.
- Fig. 5 : *Wetzeliella meckelfeldensis* GOCHT 1969. 500 ×.
Quenast B8, + 77 m, slide 1.
- Fig. 6 : *Dracodinium simile* (EISENACK 1954). 500 ×.
Overijse, + 38.5 m, slide 5.
- Fig. 7 : *Kallosphaeridium brevibarbatum* DE CONINCK 1969. 500 ×.
St. Maur G240, + 69.5 m, slide 1.
- Fig. 8-9 : *Phthanoperidinium echinatum* EATON 1976. 500 ×.
Merelbeke sluice, + 0.5 m, slide 9.
- Fig. 10, 12 : *Kisselovia crassoramosa* (WILLIAMS & DOWNIE 1866) 500 ×
Orchies, + 27.5 m, slide 3.
- Fig. 11 : *Dracodinium simile* (EISENACK 1954). 500 ×.
Mons-Ghlin G245, + 49.3 m, slide 2.
- Fig. 13-14 : *Phthanoperidinium echinatum* EATON 1976. 500 ×.
Merelbeke sluice, - 3.5 m, slide 4.
- Fig. 15 : *Phthanoperidinium echinatum* EATON 1976. 500 ×.
Melle F-DB11, - 7 m, slide 2.
- Fig. 16 : *Eatonicysta ursulae* (MORGENROTH 1966). 500 ×.
Melle F-DB11, + 5.5 m, slide 3.
- Fig. 17 : *Kisselovia crassoramosa* (WILLIAMS & DOWNIE 1966). 500 ×.
Overijse, + 27 m, slide 3.
- Fig. 18 : *Homotryblium pallidum* ? DAVEY & WILLIAMS 1966. 500 ×.
Melle F-DB11, - 5 m, slide 1 (filtered).
- Fig. 19 : *Phthanoperidinium echinatum* EATON 1976. 500 ×.
Woensdrecht, - 459 m, slide 1.
- Fig. 20 : *Phthanoperidinium echinatum* EATON 1976. 500 ×.
Woensdrecht, - 459 m, slide 3.

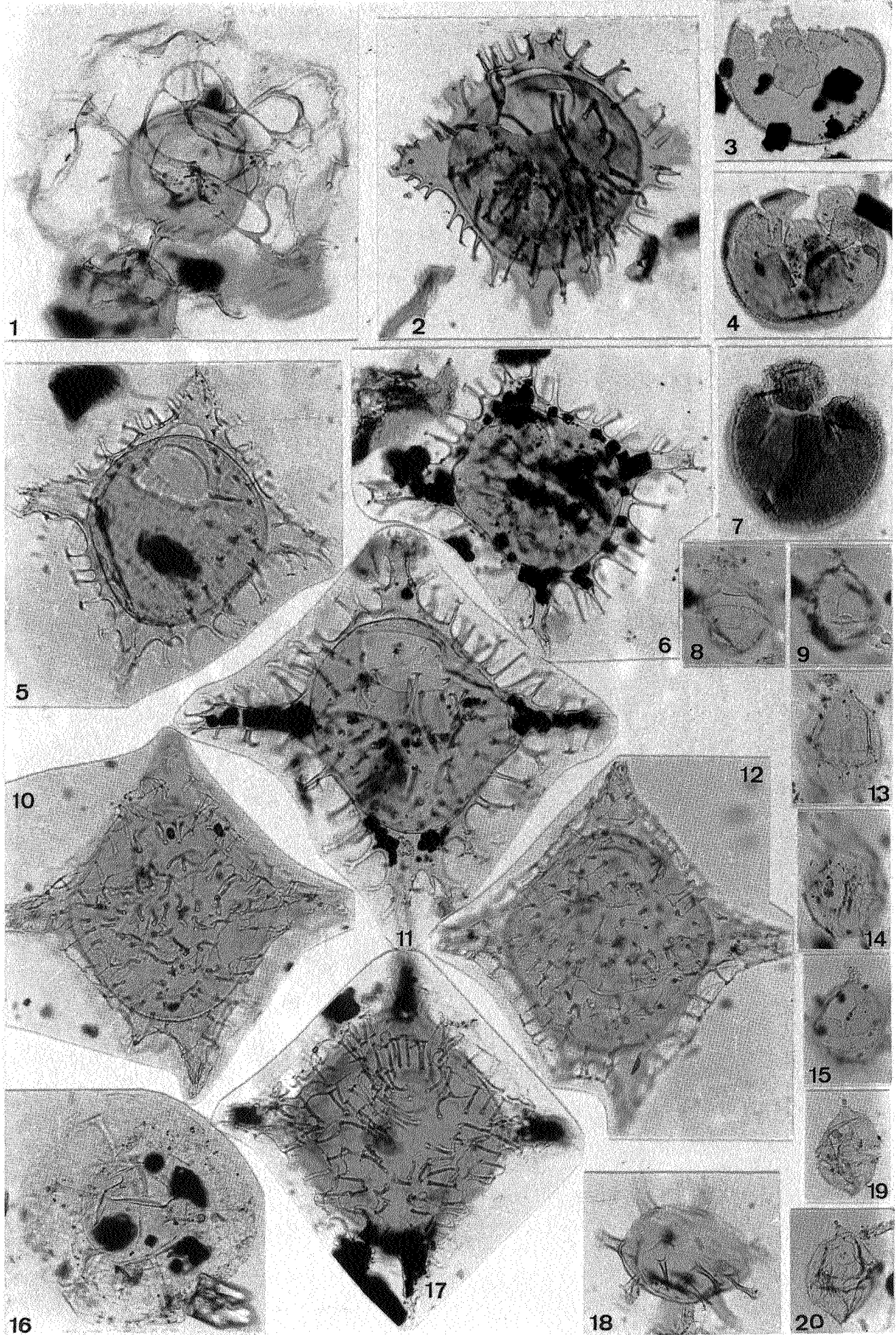


PLATE 3

- Fig. 1 : *Thalassiphora pelagica* (EISENACK 1954). 500 ×.
Mont Héribu G246, + 53.3 m, slide 2.
- Fig. 2-3 : *Eatonicysta ursulae* (MORGENROTH 1966). 500 ×.
Melle F-DB11, + 5.5 m, slide 2.
- Fig. 4 : *Homotryblium pallidum*? DAVEY & WILLIAMS 1966. 500 ×.
Melle F-DB11, - 5 m, slide 1 (filtered).
- Fig. 5 : *Polysphaeridium zoharyi* (ROSSIGNOL 1962). 500 ×.
Heusden F-DB11, + 0.5 m, slide 1.
- Fig. 6 : *Thalassiphora pelagica* (EISENACK 1954). 500 ×.
Quenast B8, + 77 m, slide 1.
- Fig. 7 : *Hystrichokolpoma granulatum* EATON 1976. 500 ×.
Woensdrecht, - 441 m, slide 6.
- Fig. 8 : *Hystrichokolpoma granulatum* EATON 1976. 500 ×.
Woensdrecht, - 429 m, slide 4.
- Fig. 9 : *Hystrichokolpoma granulatum* EATON 1976. 500 ×.
Egem-Ampe, + 38.2 m, slide 5.
- Fig. 10-11 : *Diacrocanthidium spinigerum* DE CONINCK 1969. 1000 ×.
Kallo, - 283.5 m, slide 1.
- Fig. 12 : *Polysphaeridium zoharyi* (ROSSIGNOL 1962). 500 ×.
Aalbeke G80, + 43.5 m, slide 2.
- Fig. 13 : *Polysphaeridium zoharyi* (ROSSIGNOL 1962). 500 ×.
Aalbeke G80, + 43.5 m, slide 1.
- Fig. 14 : *Dracodinium varielongitudum* (WILLIAMS & DOWNIE 1966). 500 ×.
Kallo, - 288 m, slide 1.
- Fig. 15 : *Dracodinium varielongitudum* (WILLIAMS & DOWNIE 1966). 500 ×.
Lauwe-Knok, + 26 m, slide 1.
- Fig. 16 : *Dracodinium varielongitudum* (WILLIAMS & DOWNIE 1966). 500 ×.
Kallo, - 288 m, slide 1.
- Fig. 17-19 : *Kisselovia clathrata* (EISENACK 1938). 500 ×.
Egem-Ampe, + 38.2 m, slide 2.

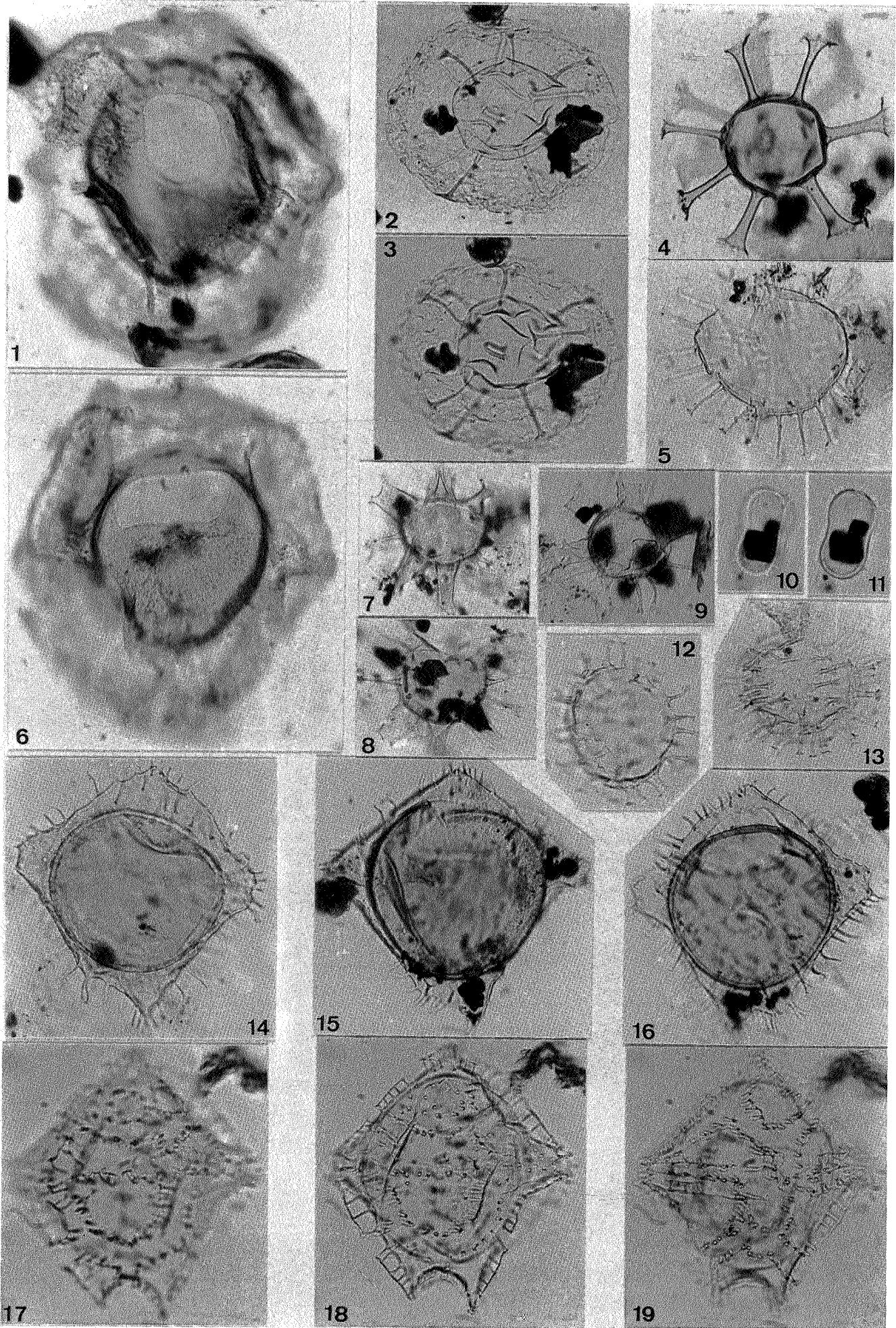


PLATE 4

- Fig. 1 : *Kisselovia clathrata* (EISENACK 1938). 500 ×.
Melle F-DB11, - 5m, slide 1 (filtered).
- Fig. 2 : *Kisselovia clathrata* (EISENACK 1938). 500 ×.
Merelbeke sluice, 0m, slide 27.
- Fig. 3-4 : *Samlandia chlamydophora* EISENACK 1954. 500 ×.
Egem-ringbeek, + 28m, slide 2.
- Fig. 5 : *Dracodinium politum* BUJAK, DOWNIE, EATON & WILLIAMS 1980. 500 ×.
Kallo, - 280m, slide 4.
- Fig. 6 : *Hystrichokolpoma granulatum* EATON 1976. 500 ×.
Heusden F-DB4, - 3.5m, slide 2.
- Fig. 7 : *Kisselovia* aff. *clathrata* (EISENACK 1938). 500 ×.
Kallo, - 258.5m, slide 3.
- Fig. 8-9 : *Ochetodinium romanum* DAMASSA 1979. 500 ×.
Kallo, - 280m, slide 1.
- Fig. 10-11 : *Ochetodinium romanum* DAMASSA 1979. 500 ×.
Kortemark, - 1.5m, slide 5.
- Fig. 12 : *Kisselovia* aff. *clathrata* (EISENACK 1938). 500 ×.
Melle F-DB11, - 5m, slide 1 (filtered).
- Fig. 13 : *Kisselovia* aff. *clathrata* (EISENACK 1938). 500 ×.
Merelbeke sluice, 0m, slide 27.
- Fig. 14 : *Kisselovia* aff. *clathrata* (EISENACK 1938). 500 ×.
Egem-ringbeek vijver, + 26.5m, slide 1.
- Fig. 15-16 : *Ochetodinium romanum* DAMASSA 1979. 500 ×.
Kallo, - 280m, slide 2.
- Fig. 17 : *Turbiosphaera galatea* EATON 1976. 500 ×.
Egem-ringbeek, + 28m, slide 3.
- Fig. 18 : *Kisselovia* aff. *clathrata* (EISENACK 1938). 500 ×.
Torhout-Pottebezemhoek, + 26m, slide 3.
- Fig. 19-20 : *Turbiosphaera galatea* EATON 1976. 500 ×.
Egem-ringbeek vijver, + 26.5m, slide 1.
- Fig. 21 : *Kisselovia* aff. *clathrata* (EISENACK 1938). 500 ×.
Egem-ringbeek, + 28m, slide 1.
- Fig. 22 : *Turbiosphaera galatea* EATON 1976. 600 ×.
Egem-Ampe, + 38.2m, slide 1.

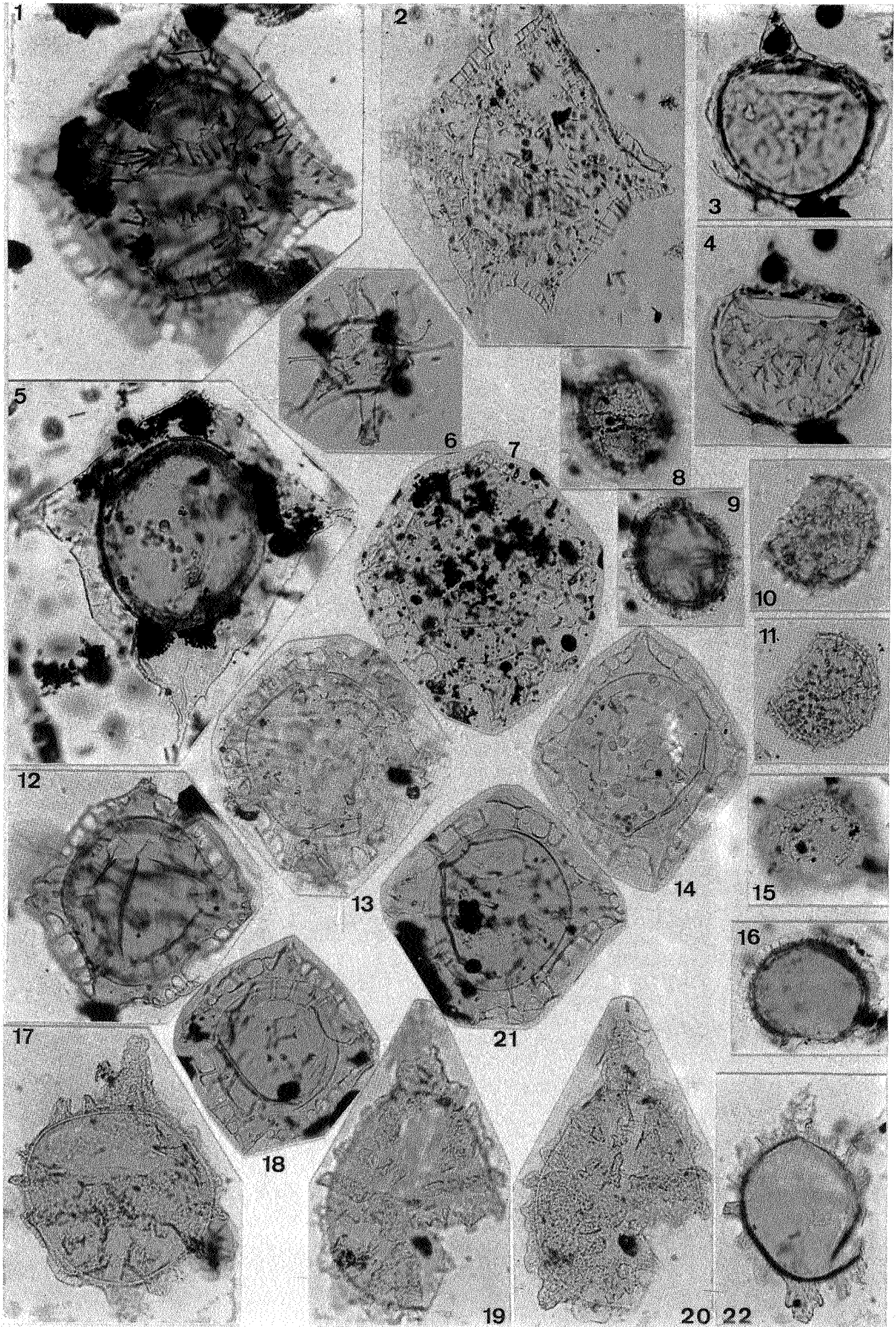


PLATE 5

- Fig. 1-2 : *Glaphyrocysta exuberans* (DEFLANDRE & COOKSON 1955). 500 ×.
Egem-ringbeek, +28m, slide 2.
- Fig. 3 : *Spinidinium* aff. *essoii* COOKSON & EISENACK 1967. 500 ×.
Torhout-Pottebezemhoek, +26m, slide 4.
- Fig. 4 : *Spinidinium* aff. *essoii* COOKSON & EISENACK 1967. 500 ×.
Torhout-Pottebezemhoek, +26m, slide 2.
- Fig. 5-6 : *Apectodinium homomorphum* (DEFLANDRE & COOKSON 1955). 500 ×.
Egem-Ampe, +38.2m, slide 1.
- Fig. 7 : *Apectodinium homomorphum* (DEFLANDRE & COOKSON 1955). 500 ×.
Egem-Ampe, +38.2m, slide 1.
- Fig. 8 : *Apectodinium homomorphum* (DEFLANDRE & COOKSON 1955). 500 ×.
Egem-Ampe, +38.2m, slide 1.
- Fig. 9 : *Spinidinium* aff. *essoii* COOKSON & EISENACK 1967. 500 ×.
Melle F-DB11, -7m, slide 1 (filtered).
- Fig. 10 : *Pediastrum* sp. 500 ×.
Kallo, -238m, slide 2.
- Fig. 11 : *Pediastrum* sp. 500 ×.
Woensdrecht, -410m, slide 3 (filtered).
- Fig. 12 : *Pediastrum* sp. 500 ×.
Kallo, -239m, slide 3.
- Fig. 13 : *Pulvinosphaeridium* sp. 500 ×.
Kallo, -238m, slide 3.
- Fig. 14 : *Pulvinosphaeridium* sp. 500 ×.
Kallo, -238m, slide 2.
- Fig. 15 : *Pulvinosphaeridium* sp. 500 ×.
Torhout-Pottebezemhoek, +26m, slide 3.
- Fig. 16 : *Areosphaeridium diktyoplokus* (KLUMPP 1953). 500 ×.
Melle F-DB11, -4m, slide 8 (filtered).
- Fig. 17-18 : *Areosphaeridium diktyoplokus* (KLUMPP 1953). 500 ×.
Melle F-DB11, -5m, slide 4.
- Figs. 19-20 : *Cerebrocysta bartonensis* BUJAK 1980. 500 ×.
Heusden F-DB4, 0m, slide 2 (filtered).
- Fig. 21 : *Cerebrocysta bartonensis* BUJAK 1980. 500 ×.
Heusden F-DB4, 0m, slide 3 (filtered).
- Fig. 22 : *Litosphaeridium?* *mamellatum* DE CONINCK 1977. 500 ×.
Woensdrecht, -410m, slide 2 (filtered).
- Figs. 23-24 : *Litosphaeridium?* *mamellatum* DE CONINCK 1977. 500 ×.
Kallo, -208.9m, slide 1 (filtered).
- Fig. 25 : *Paucilobomorpha triradiata* DE CONINCK 1986. 500 ×.
Kallo, -208.9m, slide 1.
- Figs. 26-27 : *Pyxidinoopsis densepunctata* DE CONINCK 1985. 500 ×.
Woensdrecht, -459m, slide 2.
- Fig. 28 : *Pyxidinoopsis densepunctata* DE CONINCK 1985. 500 ×.
Woensdrecht, -401m, slide 2.
- Fig. 29 : *Pyxidinoopsis densepunctata* DE CONINCK 1985. 500 ×.
Woensdrecht, -429m, slide 1.
- Fig. 30 : *Paucilobomorpha triradiata* DE CONINCK 1986. 500 ×.
Melle F-DB11, -4m, slide 10 (filtered).

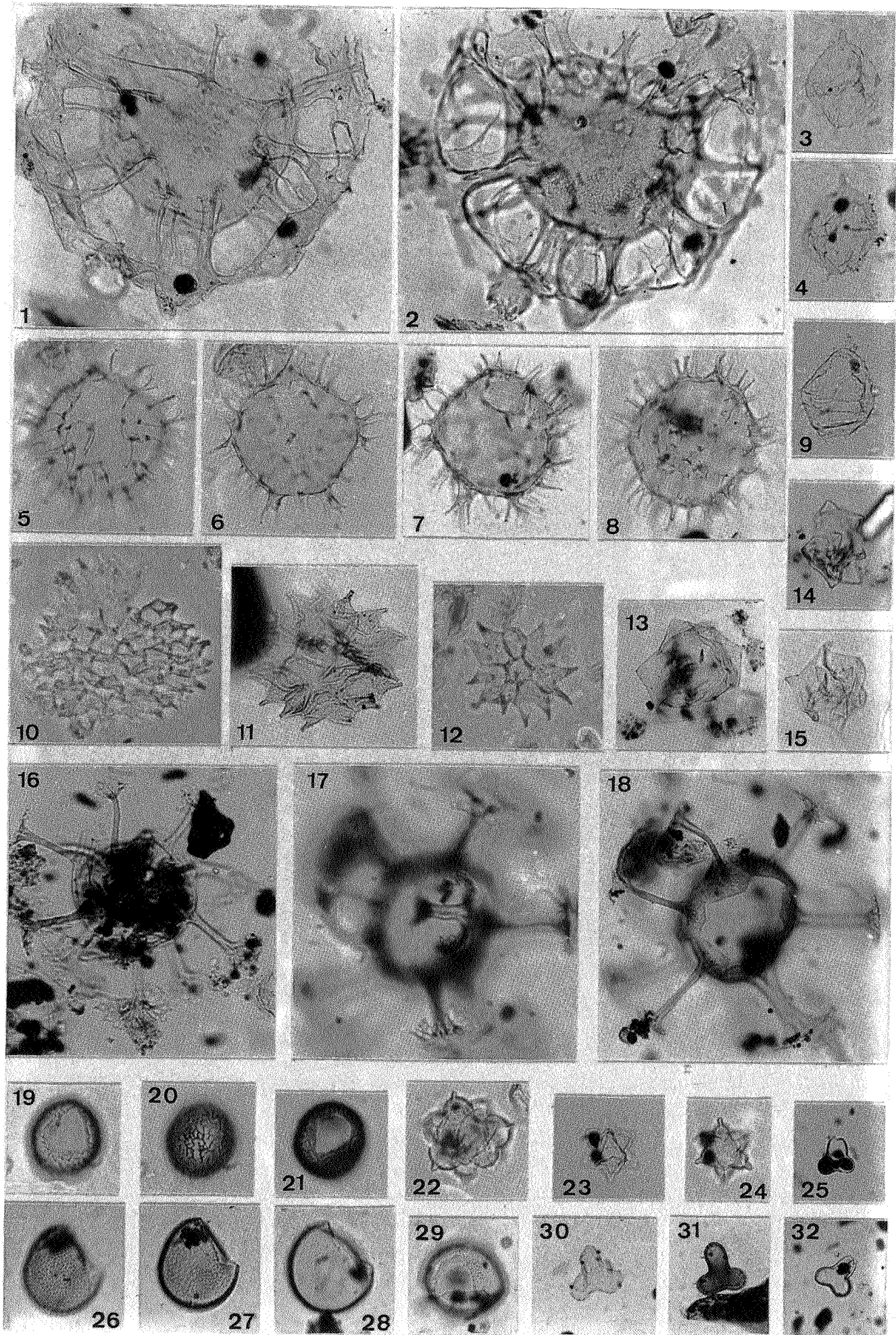
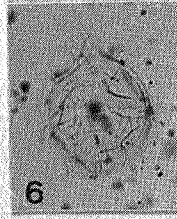
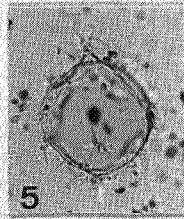
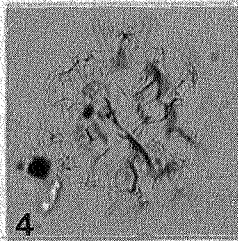
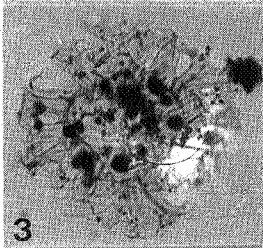
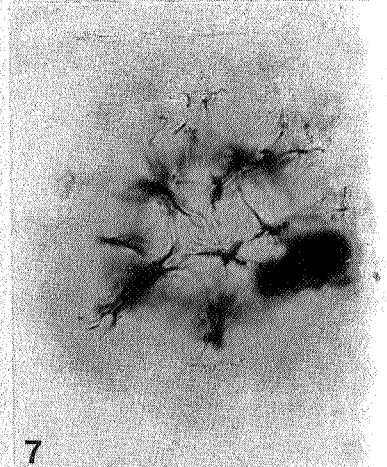
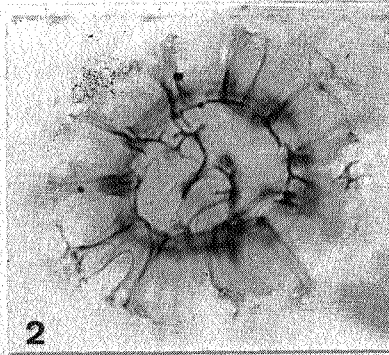
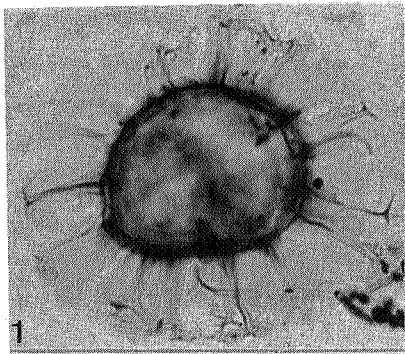


PLATE 6

- Fig. 1-2 : *Impletosphaeridium rugosum* MORGENROTH 1966. 1000 ×.
Woensdrecht, - 410m, slide 1 (filtered).
- Fig. 3 : *Impletosphaeridium rugosum* MORGENROTH 1966. 500 ×.
Melle F-DB11, × 5m, slide 1 (filtered).
- Fig. 4 : *Impletosphaeridium rugosum* MORGENROTH 1966. 500 ×.
Melle F-DB11, - 5m, slide 1 (filtered).
- Figs. 5-6 : *Phthanoperidinium comatum* (MORGENROTH 1966). 500 ×.
Woensdrecht, - 410m, slide 4.
- Figs. 7-8 : *Impletosphaeridium rugosum* MORGENROTH 1966. 1000 ×.
Woensdrecht, - 441 m, slide 2 (filtered).
- Fig. 9 : *Wetziella* aff. *articulata* (sensu CHATEAUNEUF & GRUAS-CAVAGNETTO 1978).
500 ×.
Woensdrecht, - 410m, slide 1 (filtered).
- Fig. 10 : *Wetziella* aff. *articulata* (sensu CHATEAUNEUF & GRUAS-CAVAGNETTO 1978).
500 ×.
Woensdrecht, - 385m, slide 1.
- Fig. 11 : *Phthanoperidinium comatum* (MORGENROTH 1966). 500 ×.
Woensdrecht, - 410m, slide 2 (filtered).
- Fig. 12 : *Phthanoperidinium comatum* (MORGENROTH 1966). 500 ×.
Egem-Ampe, + 40.3m, slide 2.
- Fig. 13 : *Wetziella* aff. *articulata* (sensu CHATEAUNEUF & GRUAS-CAVAGNETTO 1978).
500 ×.
Woensdrecht, - 410m, slide 2 (filtered).
- Fig. 14 : *Wetziella* aff. *articulata* (sensu CHATEAUNEUF & GRUAS-CAVAGNETTO 1978).
500 ×.
Woensdrecht, - 416.5m, slide 1.
- Fig. 15 : *Dracodinium pachydermum* (CARO 1973). 500 ×.
Woensdrecht, - 385m, slide 5.
- Fig. 16 : *Wetziella* aff. *articulata* (sensu CHATEAUNEUF & GRUAS-CAVAGNETTO 1978).
500 ×.
Woensdrecht, - 385m, slide 1.
- Fig. 17 : *Dracodinium pachydermum* (CARO 1973). 500 ×.
Woensdrecht, - 380m, slide 7.
- Fig. 18 : *Dracodinium pachydermum* (CARO 1973). 500 ×.
Woensdrecht, - 380m, slide 7.



7

8

