

Mémoires pour servir à l'explication
des Cartes géologiques et minières
de la Belgique

MÉMOIRE N° 11

Toelichtende Verhandelingen
voor de Geologische kaart en Mijnkaart
van België

VERHANDELING N° 11

LE SONDAGE DE KALLO

(AU NORD-OUEST D'ANVERS)

I. — Coupe résumée des terrains traversés au sondage de Kallo
et profil géologique NS passant par Woensdrecht-Kallo-Halle

par

M. GULINCK (Bruxelles)

II. — Microfauna close to the Eocene-Oligocene boundary
in the boring at Kallo

by

C.W. DROOGER (Utrecht)

III. — Calcareous nannoplankton from the Kallo well

by

E. MARTINI (Frankfurt)

MINISTÈRE DES AFFAIRES ÉCONOMIQUES
ADMINISTRATION DES MINES

Service Géologique de Belgique

13, Rue Jenner, 13
BRUXELLES 4

MINISTERIE VAN ECONOMISCHE ZAKEN
BESTUUR VAN HET MIJNWEZEN

Aardkundige Dienst van België

13, Jennerstraat, 13
BRUSSEL 4

Mém. Expl. Cartes Géologiques et Minières de la Belgique.	1969	N° 11	42 p.	7 pl.
Toelicht. Verhand. Geologische kaart en Mijnkaart van België.				

SERVICE GÉOLOGIQUE DE BELGIQUE

MÉMOIRE N° 11

LE SONDAGE DE KALLO

(AU NORD-OUEST D'ANVERS)

I. — Coupe résumée des terrains traversés au sondage de Kallo
et profil géologique NS passant par Woensdrecht-Kallo-Halle

par

M. GULINCK (Bruxelles)

II. — Microfauna close to the Eocene-Oligocene boundary
in the boring at Kallo

by

C.W. DROOGER (Utrecht)

III. — Calcareous nannoplankton from the Kallo well

by

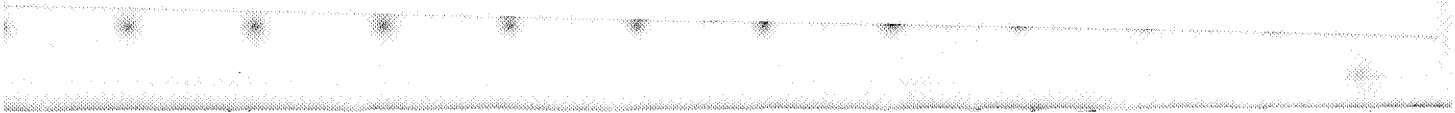
E. MARTINI (Frankfurt)

BRUXELLES

IMPRIMERIE HAYEZ, s. p. r. l.

4, rue Fin

1969



I. — COUPE RÉSUMÉE DES TERRAINS TRAVERSÉS AU SONDAGE DE KALLO ET PROFIL GÉOLOGIQUE NS WOENSDRECHT-KALLO-HALLE

PAR

M. GULINCK

Le sondage de Kallo a été entrepris en 1964 à l'initiative du Service géologique et exécuté par la firme Foraky S.A.

Il fait partie d'une campagne de sondages carottés ayant pour objectif particulier la reconnaissance du flanc nord du massif paléozoïque du Brabant.

Dans son ensemble, la coupe de ce forage confirme nos connaissances antérieures en ce qui concerne la succession des formations tertiaires et secondaires dans le Nord de la Belgique (1).

L'intérêt du sondage réside surtout dans le fait qu'il a livré un excellent matériel pouvant donner lieu à des études lithologiques et paléontologiques détaillées. Certaines de ces études ont d'ailleurs déjà été entamées ou sont même terminées.

Ce forage nous a permis de dresser une coupe Nord-Sud proche de la méridienne Anvers-Bruxelles, reliant le sondage classique de Woensdrecht à la région de Halle où le socle cambrien commence à affleurer (fig. 1).

Nous y avons schématisé le relief topographique en indiquant simplement la ligne enveloppe des thalwegs et la ligne enveloppe des crêtes situées à proximité de la coupe.

La « cuesta » du Pays de Waas (rive nord de l'Escaut) formée par l'argile de Boom est bien mise en évidence sur la coupe.

Le socle cambrien a été atteint au sondage de Kallo, à la profondeur de 592,15 m, c'est-à-dire vers la cote -590. Il a été traversé sur 30 m d'épaisseur et est formé de phyllades noirâtres straticulés fortement redressés ($i=80^\circ$). R. LEGRAND les place dans le Revinien supérieur.

Le crétacé, épais de 144,65 m (de 447,50 à 592,15 m) est composé de tuffeaux et de craies blanches avec silex abondants représentant le Maastrichtien l.s. et le Campanien. A la base on rencontre des marnes crayeuses que nous plaçons provisoirement dans le facies dit « Hervien » des sondages profonds de la Campine.

(1) La description détaillée du forage peut être consultée dans les archives du Service géologique, où il est indexé sous le n° 148 de la planchette 27 E (Beveren-Waas) et le n° 133 de la série des sondages au socle du Bassin houiller de la Campine.

L'échantillonnage de ces craies a été malheureusement très défectueux, par suite de l'abondance des silex. Il n'est dès lors pas possible d'en faire une étude détaillée.

L'Éocène inférieur (Landénien-Yprésien) a, par contre, fourni une coupe pratiquement continue.

Il débute par 2 m de marnes finement sableuses et glauconifères, qui représentent le biseau terminal du Heersien.

Le Landénien marin s.s. montre une succession semblable à celle rencontrée dans tous les sondages profonds du Nord et du Nord-Est de la Belgique : argiles lourdes, silts plus ou moins argileux et grésifiés, sables fins glauconifères.

Le Landénien supérieur, à facies lagunaire est remarquablement bien développé. Ses caractères palynologiques ont été étudiés par E. ROCHE (1967) et nous en avons également donné une description lithologique détaillée (M. GULINCK, 1967).

Nous avons également pu dresser une coupe très détaillée de l'Yprésien (M. GULINCK, 1967) qui comporte une alternance d'argiles massives, d'argiles silteuses et de silts ou sables extrêmement fins. On y observe vers le milieu, un niveau à perforations sableuses qui semble former un repère lithostratigraphique.

Au-dessus apparaissent des sables très fins à *Num. planulatus* avec deux minces bancs gréseux, à leur tour couronnés par une couche d'argile compacte correspondant manifestement à l'argile d'Anderlecht (*P1m* de l'ancienne légende de la carte géologique).

Un accident technique survenu en cours de forage ne nous a pas permis d'échantillonner convenablement les sables et grès qui viennent ensuite et appartiennent essentiellement au facies « Panisélien ». Les sables d'Aalter et les sables bruxelliens s.s. qui avaient été rencontrés au forage de Woensdrecht ne semblent pas exister à Kallo.

Le Ledien et les sables de Wemmel se présentent normalement, mais ces derniers sont localement grésifiés. Cette particularité a déjà été remarquée dans des sondages anciens effectués dans la région de Hulst et Sint-Janskapelle (Zeelande).

Au-dessus de l'argile de Asse, lithologiquement et paléontologiquement bien caractérisée, le forage a recoupé un ensemble de sables, silts et argiles qui s'étend jusqu'au Rupélien inférieur sableux et que nous avons dénommé : « complexe argilo-sableux de Kallo ».

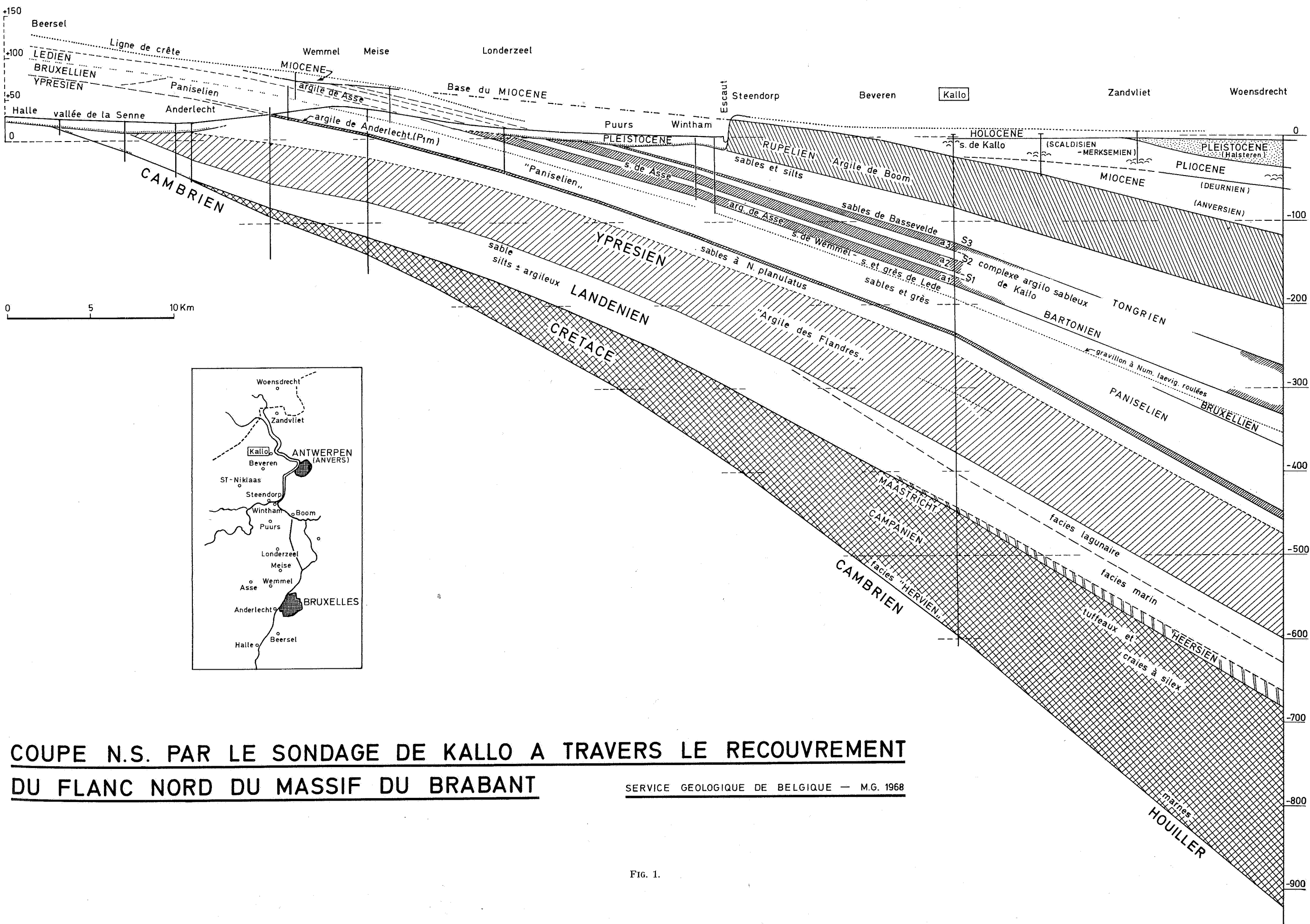
C'est dans ce complexe que doit se placer la limite Oligocène-Éocène, problème que nous reprendrons plus loin et qui fera l'objet d'un examen critique approfondi dans le travail de C. W. DROOGER inclus dans le présent mémoire.

Des pertes de carottes, inévitables dans la traversée de couches sableuses meubles, nous ont empêché de tracer une limite nette entre le complexe de Kallo et le Rupélien à facies sableux.

Aucun fait singulier n'est apparu dans la traversée de l'argile de Boom qui atteint ici environ 60 m d'épaisseur.

Les dépôts miocènes semblent faire défaut. La figure 1 montre qu'on les retrouve plus au Sud, au sommet des collines de la région de Wemmel (sables ferrugineux « diestiens » et « sables chamois du Heyzel »).

L'argile de Boom est directement surmontée par des sables fins glauconifères chargés de petits galets représentant peut-être le biseau terminal des sables de Kattendijk. Ensuite viennent les sables coquilliers de Kallo, caractérisant le Scaldisien proprement dit.

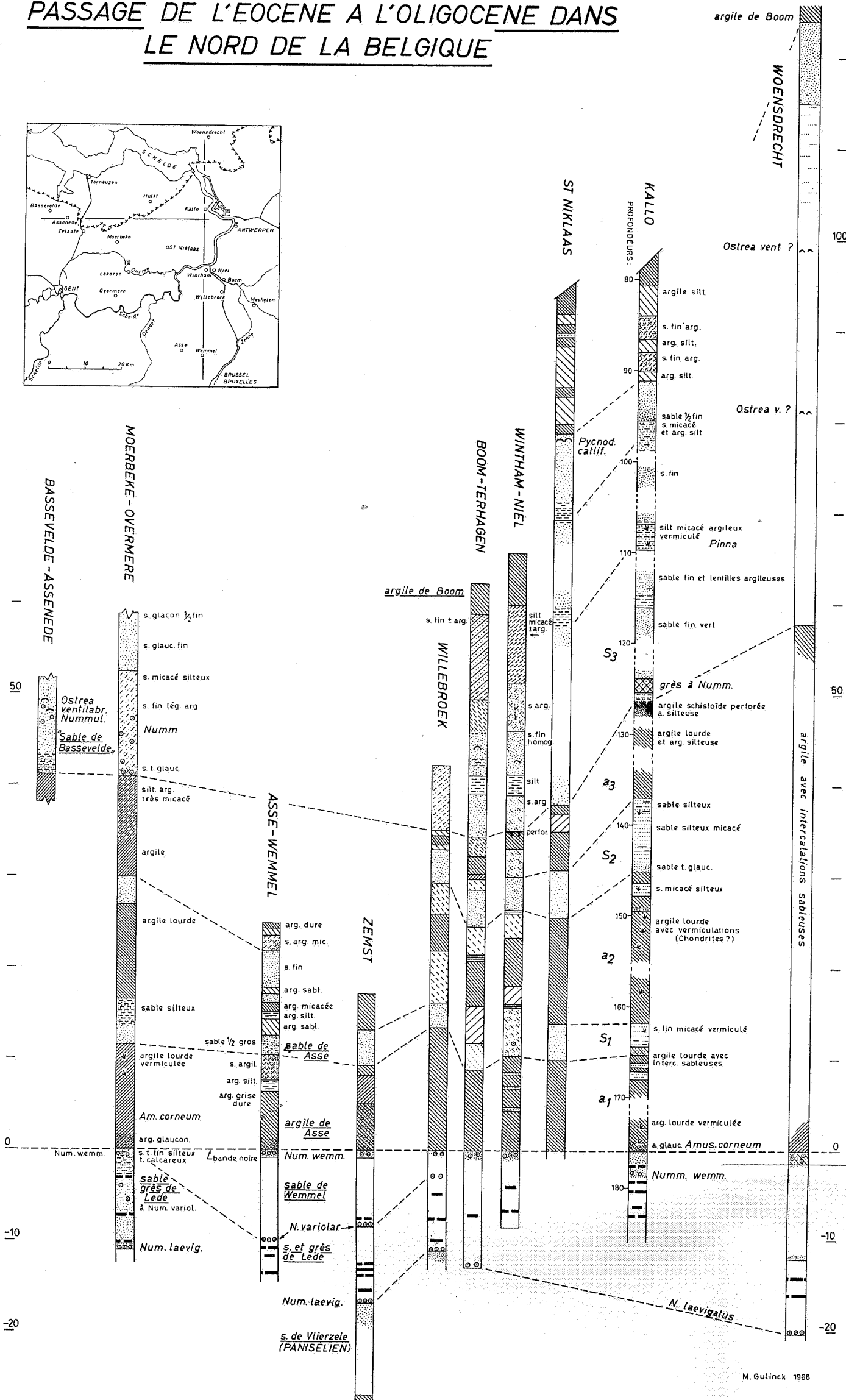
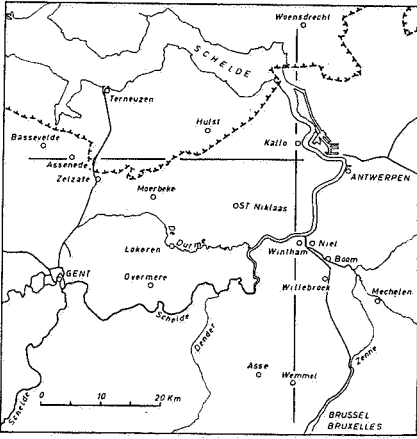


**COUPE N.S. PAR LE SONDAGE DE KALLO A TRAVERS LE RECOUVREMENT
DU FLANC NORD DU MASSIF DU BRABANT**

SERVICE GEOLOGIQUE DE BELGIQUE — M.G. 1968

FIG. 1.

PASSAGE DE L'EOCENE A L'OLIGOCENE DANS LE NORD DE LA BELGIQUE



M. Gulinck 1968

FIG. 2.

Nous signalerons enfin pour mémoire les dépôts holocènes (tourbe et argiles) de la plaine des polders.

Les couches de passage Éocène-Oligocène (fig. 2).

Notons tout d'abord que le sondage de Kallo a confirmé les caractères généraux de cette séquence lithologique, mis en évidence par l'étude comparative des sondages faits dans le Nord de la Belgique (M. GULINCK, 1965).

L'absence apparente d'éléments paléontologiques rendait jusqu'à ce moment hasardeuse toute tentative de corrélation stratigraphique avec le Tongrien classique de l'Est de la Belgique.

De plus, il semble que les jalons qui permettraient d'établir un raccord géométrique entre ces deux régions extrêmes, aient été partiellement éliminés par la transgression néogène.

L'hypothèse que nous avons présentée à cette occasion, n'a donc qu'une valeur provisoire.

La découverte d'une couche assez riche en nummulites dans la partie supérieure du complexe de Kallo nous a cependant ouvert certains espoirs.

Nous sommes donc particulièrement reconnaissant envers le Prof^r C. W. DROOGER qui a bien voulu entreprendre l'étude micropaléontologique de ces couches problématiques et en présenter ici les résultats.

Entre-temps, des observations nouvelles nous avaient permis de constater que la couche à nummulites du sondage de Kallo se retrouve en plusieurs endroits du Nord de la Belgique, dans la même position géométrique et qu'elle renferme parfois aussi *Ostrea ventilabrum*.

Ceci s'est notamment présenté dans un sondage récent fait à Bassevelde, ce qui nous a conduit à introduire le terme de « sables de Bassevelde ».

Ces divers faits ont été exposés dans une note présentée au Colloque sur l'Éocène tenu à Paris en 1968, actuellement sous presse, à laquelle nous reprenons la figure 2.

Cette figure met en évidence les faits lithostratigraphiques suivants :

1° Le complexe de Kallo est caractérisé par une sédimentation cyclique dont les différents termes notés *a1*, *s1*, *a2*, *s2*, *a3*, *s3*, se poursuivent sur une assez grande étendue.

2° Toutes ces couches présentent un caractère marin. Il n'y a donc pas eu d'interruption perceptible de la sédimentation marine pendant la période qui couvre le passage Éocène-Oligocène dans la région environnant Kallo.

3° On trouve néanmoins à Kallo et dans d'autres sondages, un niveau perforant avec traces de matières ligniteuses entre les sables de Bassevelde et l'argile sous-jacente (*a3*). Est-ce l'indice d'un bref ralentissement de la sédimentation ou d'un changement dans l'environnement paléogéographique ?

4° Les facies lithologiques sableux du sondage de Kallo rappellent ceux du Tongrien marin typique. Il faut toutefois tenir compte d'une variation latérale de ces facies lorsque l'on s'éloigne de la bordure continentale. Les facies tongriens lagunaires font notamment nécessairement place à des dépôts marins. Ces derniers semblent en outre (du moins en ce qui concerne les sables de Grimmertingen) être caractérisés par un accroissement de l'apport argileux en direction du Nord-Ouest.

En nous basant sur ces considérations, nous admettons les corrélations suivantes :

s_3 = sables de Bassevelde = facies lagunaires tongriens;
 niveau perforant = phase d'émersion de Hoogbutsel;
 a_3 = argile = sables de Neerrepn avec lentilles argileuses intercalées dans leur sommet;
 a_3 = argile silteuse = sables argileux de Grimmertingen;
 a_1 = sable d'Asse = } absent dans les régions orientales.
 a_1 = argile d'Asse = }

On constatera plus loin que C.W. DROOGER défend une autre interprétation. Pour lui, sables de Bassevelde = sables de Grimmertingen. La similitude lithologique et paléontologique est évidemment manifeste.

Notons cependant que ceci nous obligerait alors peut-être à mettre en parallèle les facies tongriens lagunaires avec les sables du Rupélien inférieur de la région Boom-Kallo.

C. W. DROOGER met encore le doigt sur d'autres points mis en question et se rapportant aux problèmes de la limite Éocène-Oligocène et de l'extension verticale du Letetien.

Le champ reste donc ouvert à de nombreuses discussions, mais nous jugeons inopportun d'engager ici un débat.

Nous pensons, en effet, qu'il faudrait pouvoir arriver à délimiter l'extension dans le temps des faunes rencontrées de part et d'autre et vérifier jusqu'à quel point celles-ci sont indépendantes ou non des facies lithologiques associés, avant de prendre une position définitive.

Cependant, l'étude de la faune nanno-planctonique du même complexe de Kallo, faite ultérieurement par E. MARTINI, conduit également cet auteur à assimiler les sables de Bassevelde aux sables de Grimmertingen.

On retrouvera plus loin le texte d'une note que E. MARTINI nous a transmise à ce sujet.

THE UNIVERSITY OF CHICAGO

PHILOSOPHY DEPARTMENT

1998

1999

2000

2001

2002

2003

2004

2005

2006

2007

2008

2009

2010

2011

2012

2013

2014

2015

2016

2017

2018

2019

2020

2021

2022

2023

2024

BIBLIOGRAPHIE

- GULINCK, M., 1965, Le passage du Bartonien au Rupélien dans la région Boom-Malines. (*Bull. Soc. belge de Géol.*, t. LXXIV, pp. 115-119.)
- 1967, Profils de l'Yprésien dans quelques sondages profonds de la Belgique. (*Ibid.*, t. LXXVI, pp. 108-113.)
- 1967, Le Landénien à facies lagunaire dans les sondages de Loksbergen et de Kallo. (*Ibid.*, t. LXXVI, pp. 94-98.)
- (sous presse), Le passage Oligocène-Eocène dans le sondage de Kallo et le Nord de la Belgique. Colloque sur l'Eocène. Paris, 1968.
- ROCHE, E., 1967, Espèces nouvelles de spores et de pollens du Landénien supérieur de Belgique (sondage de Kallo). (*Bull. Soc. belge de Géol.*, t. LXXVI, pp. 145-170.)
-



II. — MICROFAUNA CLOSE TO THE EOCENE-OLIGOCENE BOUNDARY IN THE BORING AT KALLO, NEAR ANTWERP

BY

C.W. DROOGER

ABSTRACT.

An interval of some 70 m. in the boring at Kallo (near Antwerp) corresponds to Eocene-Oligocene transitional strata in between the Upper Eocene Asse Clay and the Middle Oligocene Boom Clay. Some meters in this interval yielded a distinctly marine foraminiferal fauna. This association is unknown from other stratigraphic units in the North Sea basin, for which reason the placing of any Oligocene-Eocene boundary in this sequence on foraminiferal evidence has to remain arbitrary.

THE STRATIGRAPHIC PROBLEM.

Kallo is a village, some kilometres west of the town of Antwerp (fig. 1). A stratigraphic reconnaissance boring was carried out in 1964 on behalf of the Belgian Geological Survey. Because of its far northern location in the Belgian part of the North Sea basin it was thought that the core samples and their contents might give a better insight into some of the existing stratigraphic problems of the area (see GULINCK, 1968).

One of these problems concerns the position of the Eocene-Oligocene boundary for the international chronostratigraphic scale, for which a presumably continuous series of marine sediments was sought in this classical area of northern Belgium.

Although northern Belgium is classical for some stages of the Upper Eocene, such as the Ledian and the Wemmelian and the contemporaneous (?) Assian (= Bartonian according to many authors), and for the Tongrian and Rupelian Stages of the Oligocene, the Eocene-Oligocene boundary of the area could not be linked to any biostratigraphic zonation of more than local importance. This is due to the fact that exposures as well as subsurface samples at both sides of this boundary so far only have yielded scarce and insignificant faunas or no fauna at all.

Many rock units of local importance have been inserted between formations of distinct Upper Eocene (Asse Clay) and distinct Middle Oligocene (Boom Clay). From a microfaunistic point of view these stratigraphic units, Asse Clay and Boom Clay, contain fully marine and clearly different associations, which can be recognized over

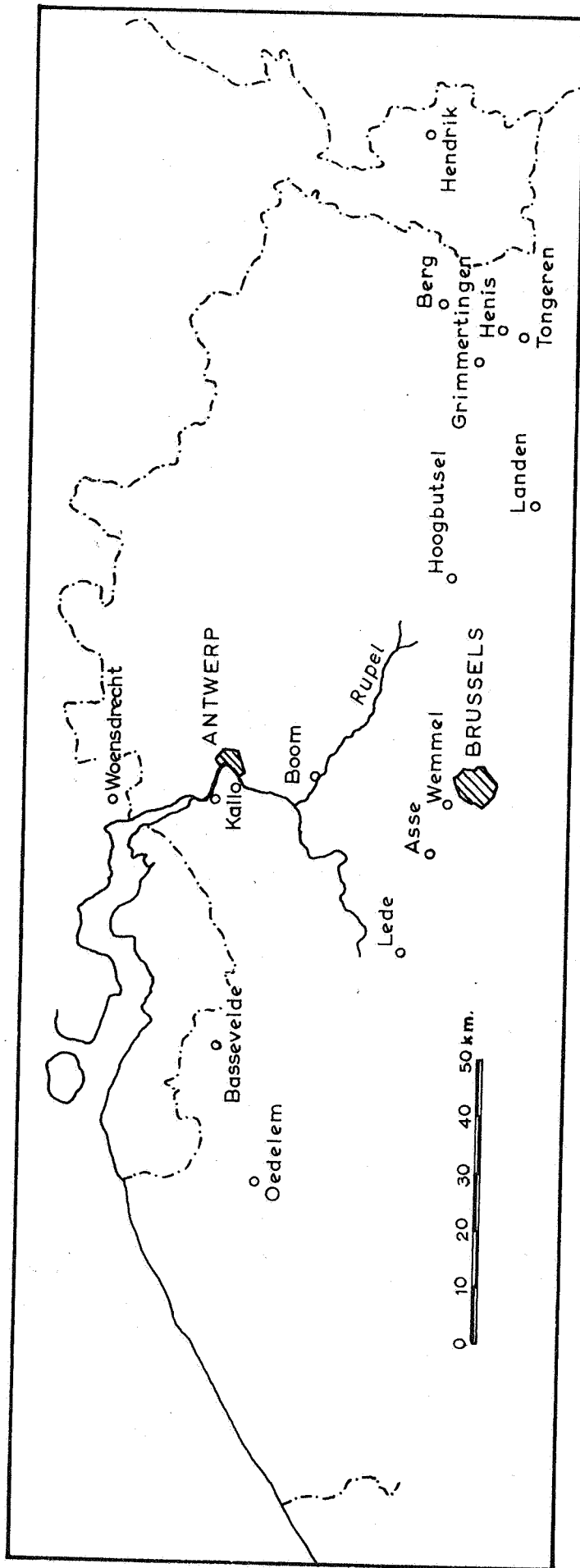


FIG. 1. — Map with localities that are mentioned in the text.

considerable distances, at least in the North Sea basin. Fairly complete faunal reviews have been given by BATJES (1958) of the Oligocene foraminifera, by KAASSCHIETER (1961) of the Eocene foraminifera, and by KEIJ (1957) of the ostracoda of both Eocene and Oligocene.

Rock units of the Oligocene, underlying the Boom Clay have been described mainly from northeastern Belgium, from the area of Tongeren (fig. 2). Overlying much older (mainly Paleocene) sediments the Tongeren Formation of this area contains the type deposits of the Tongrian Stage, which stage has frequently been considered the lowermost stage of the Oligocene. The formation consists of two parts, indicated as Lower and Upper Tongeren Formation by BATJES.

The Lower Tongeren Formation consists of two members, the Sands of Grimmertingen (or Sands of Vliermaal) below, the Sands of Neerrepen on top. The latter are devoid of fossils or nearly so. From the Sands of Grimmertingen molluscs (amongst others *Ostrea ventilabrum*, *Turritella crenulata*) and bryozoans have been reported. Possibly on account of decalcification microfaunas appeared to be very scarce in the few available outcrops.

The best microfauna of foraminifera and ostracoda of the Sands of Grimmertingen, not too far from the type area, was found by BATJES in the shaft Hendrik IV in nearby Southern Limburg (Netherlands). It has an Eocene aspect according to this author, amongst other things owing to the presence of *Nummulites germanicus* (= *N. orbigny*) and *Asterigerina bartoniana*, the latter species known only from the Eocene. However, according to GRAMANN (1964), the *Asterigerina* species from Hendrik IV would be younger than the Eocene forms. We checked BATJES' material in the Utrecht collections and found GRAMANN's suggestion of the presence of *A. brandhorstiana* and *A. rotula haeringensis* to be correct. Both types are present, but variation of the entire group of individuals in size, relative proportions and thickness of the test is very wide, which variation resembles that found in recent and Neogene *Amphistegina lessonii* of different habitats. On the basis of GRAMANN's differential diagnosis of these Eo-Oligocene species many of BATJES' forms have to remain unnamed. Finding GRAMANN's suggestion correct, it follows that the Sands of Grimmertingen of Dutch Southern Limburg would then be younger than the Upper Eocene Asse Clay of western Belgium, which idea, however, was advanced by BATJES as well. He rather placed these Sands of Grimmertingen parallel to the sterile Asse Sands, which overlie the Asse Clay of western Belgium (see below).

If not of fluvial origin the members of the Upper Tongeren Formation, such as the Clay of Henis and the Sands and Marls of Oude Biezen (=Vieux-Joncs), clearly point to deposition in a brackish environment. Their poor microfaunas of low salinity type merge via various intermediate associations found in the Sands of Berg and the Clay of Kleine-Spouwen (= *Nucula* Clay of authors), into that of the Middle Oligocene Boom Clay of fully marine character. Both the Sands of Berg and the Clay of Kleine-Spouwen, defined again in the Tongeren area and underlying the Boom Clay, already belong to the Rupelian and are considered to be more near-shore equivalents of the lower part of the Boom Clay in its type area along the Rupel. A similar position, lateral of the Boom Clay, was advanced by BATJES for the units of the Upper Tongeren Formation. No trace of these brackish Upper Tongeren deposits has ever been found outside the Tongeren area.

On field evidence it is quite reasonable to suppose that the lower and upper parts of the Tongeren Formation are separated by a considerable break in the sedimentation in the near-shore environment of the type region. Fossil soils at the top of the Neerrepen Member, and the vertebrate-bearing horizon of Hoogbutsel, point to an

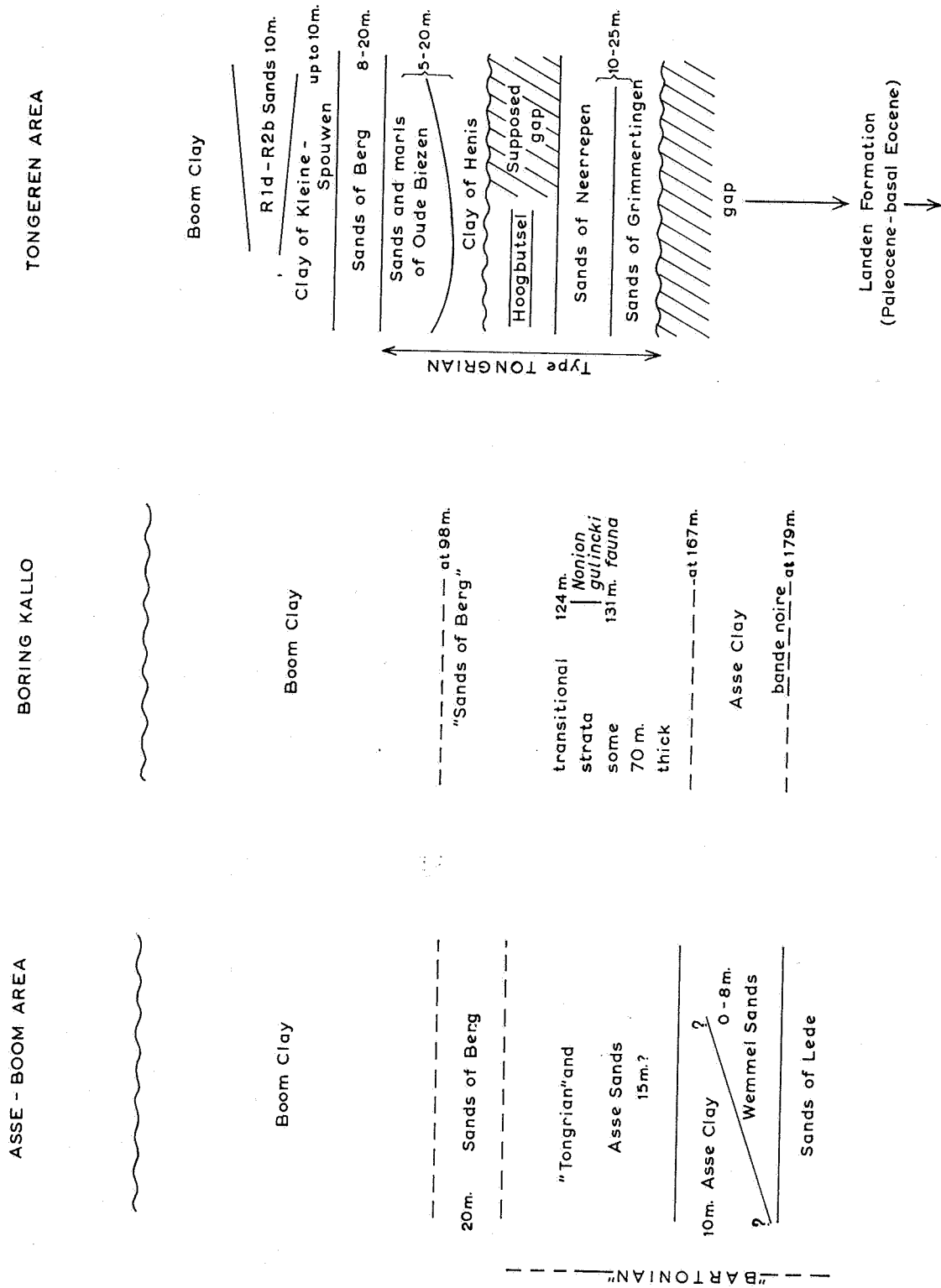


FIG. 2. — Tentative correlation of sediments in the Kallo boring with classical deposits in the Asse-Boom and Tongeren areas.

emersion gap between both parts of the Tongeren Formation. All these reasons together made BATJES (1958), KAASSCHIETER (1961) and DROOGER (1964) place the Eocene-Oligocene boundary at the middle of this type Tongrian.

In borings in north-western and north-central Belgium the Lower Tongeren Formation has sometimes been recorded because of the presence of oysters, determined as *Ostrea ventilabrum*, while the sand immediately underlying the Boom Clay of these areas is generally equated to the Sands of Berg. A distinct delimitation of the Tongeren Formation, and hence of the Tongrian, appeared impossible, however.

Instead, the borings frequently contain another rock unit overlying the Asse Clay, considered to belong to the Upper Eocene as well, the so-called Sands of Asse consisting of alternating sands and clays, from which no fauna, at least no microfauna, has been reported apart from some *Nummulites*. This absence of fauna is probably again due to decalcification. These sediments are generally considered to belong to the top of the Eocene. According to BATJES and others the Asse Sands might be contemporaneous with the Lower Tongeren Formation. Because of this there would be an overlap of the Oligocene Tongrian Stage and the Upper Eocene supposed to belong to the Bartonian Stage.

It is not surprising that neither in the Asse-Boom area nor in that of Tongeren the Eocene-Oligocene boundary could find support in fossil evidence of any weight. The presence or absence of *Ostrea ventilabrum* is of dubious value, and the presence of either *Nummulites orbigny-wemmelensis* (Eocene) or *N. germanicus* (Oligocene) is equally invalid as an argument, as long as these species cannot be differentiated by clear paleontological methods.

THE KALLO BORING.

If we want to find evidence from more marine, off-shore sediments in the Eocene-Oligocene transitional interval, we have to look well north of the line Tongeren-Asse. As such the situation of the Kallo boring could be favourable. A thick transitional suite of sediments has formerly been reported from the boring Woensdrecht, north of Antwerp. Some 60-70 m. were recorded between Boom Clay above and (nearly 60 m. of) Asse Clay below, but the interpretation, mainly on lithological data, was different from one author to the other (see amongst others TEN DAM and REINHOLD, 1942; TEN DAM, 1944; BATJES, 1958; KAASSCHIETER, 1961).

A suite of comparable thickness was met with in the Kallo boring. Between depths of roughly 30 and 90 m., the Boom Clay is present, and at 179 m. depth a glauconite-rich bed is equated to the « bande noire », basis of the Asse Clay (see lithologic description and stratigraphic interpretation given by GULINCK, 1968). In between, the series of alternating clays, silts and sands does not allow one to draw any limit that can be unambiguously correlated with lithostratigraphic boundaries near Tongeren or near Asse. We might expect at least some 10 m. of Asse Clay to be present above the « bande noire », and some 20 m. of Berg Sands at the top of the interval. Mica-rich fine sands at about 140 m. reminded GULINCK (preliminary unpublished column of the boring) of the Sands of Grimmertingen, but on lithologic data alone various interpretations are possible in subdividing the interval 179-90 m. Actually GULINCK's open nomenclature consisting of six alternating sandy (s_1, s_2, s_3) and clayey (a_1, a_2, a_3) deposits in his « complexe argilo-sableux de Kallo » is the most realistic one.

Starting from above with the study of the foraminiferal contents of the core samples our first task was to trace the typical Boom Clay association downwards.

Two samples, at 87 and at 92 m., taken from silty clay and clayey fine sand respectively, yielded good foraminiferal associations. The fauna compares well with those given as characteristic for the Belgian Boom Clay by BATJES. Some scattered faunal elements of little significance, but not necessarily different from the higher associations, were still found in the more silty-sandy sediments lower down, at 95.50 and at 98 m.

In the interval farther down to about 120 m. with predominantly sandy deposits, all available samples were checked and found to be barren. The wash residues contain much quartz and variable quantities of mica, glauconite and pyrite. No trace of calcareous particles was found.

From 120 to 130 m., one sample from green sand at 124 m., had immediately attracted attention because it contained numerous small *Nummulites*. Such rather flattened individuals occur at 127 m. as well. They appeared undeterminable because most of their test had been dissolved, leaving irregular frameworks with or without fragmentary pyrite molds (Pl. 5, fig. 6). The sample appeared to contain no other microfaunal elements. It is interesting to note that GULINCK (1968) correlates these s_3 sands with the « Sands of Bassevelde », which contain *Ostrea ventilabrum* in addition to flattened *Nummulites*.

However, samples from more clayey sands and silts at 125.10, 125.50 and 127 m. together yielded a rather varied but poor microfauna. Preservation is moderate, because many specimens have a corroded surface. Some additional individuals were still found at 131 m. This fauna from 124-131 m. forms the main subject of our investigation. At 122 and 129.50 m. samples were found to be devoid of fauna. In the lower one the wash residue consisted of over 90 % of glauconite.

Below 131 m. and down to 167 m., in alternating clayey and silty deposits all samples were inspected. They contain occasional benthonic foraminifera, but without value for stratigraphic interpretation. Apart from these few benthonic forms, there were some scattered Globigerinids. More frequent throughout this interval were Hystrichospherids and small egg-shaped whitish pellets of unknown systematic position, which elements occurred in the higher and deeper intervals as well. One gets the impression that the deposits are of marine origin but that decalcification might have destroyed the original faunas. However, the absence of arenaceous forms and possibly the frequent presence of plant remains in the wash residues show that the assumption of influence of restricted bottom conditions during sedimentation cannot be ruled out either.

At 178 m. there is again a varied fauna with many flat *Nummulites*, but all faunal elements are rather ill-preserved. Most of the specimens suffered from corrosion, and their surface is frequently strongly pitted, where adhering sediment particles had been removed by the washing. This fauna compares well with those of the Asse Clay, Wemmel Sands and Lede Sands, which is not surprising since we are approximately one meter above the so-called « bande-noire », which is thought to mark the base of the Asse Clay in northwestern Belgium. Some foraminifera fitting in well with the known Upper Eocene assemblages were still found at 176, 168.50 and 167.50 m.

As a result there is an indeterminate interval between 98 m. with the deepest faint indications of the Middle Oligocene Boom Clay fauna, and about 167 m. with elements of distinct Upper Eocene associations. It might be assumed that the Asse Clay ranges higher up, though the maximal thickness estimate of KAASSCHIETER is some 10 m. In the remaining interval of some 70 m. we may expect to find sediments lateral to all stratigraphic units from Asse Sands below to Berg Sands at the top. The only possibility for placing an Eocene-Oligocene boundary in this sequence may result from the determination of the fauna between 124 and 131 m.

PLANKTONIC FORAMINIFERA.

Planktonic foraminifera are extremely scarce in the samples throughout our investigated interval. The majority cannot be determined with any certainty.

Three occurrences seem to allow for a more reliable specific determination. One concerns an individual of *Cassigerinella chipolensis* (CUSHMAN and PONTON) with indistinct, filled aperture at 131 m. (Pl. 1, fig. 3). Next there is a well preserved specimen of *Pseudohastigerina* (Pl. 1, fig. 2) from the Asse Clay at 178 m., which because of size of the test and curvature of the sutures better resembles *P. wilcoxensis* (CUSHMAN and PONTON) than *P. micra* (COLE). Finally at 167.50 m., still in the sediments considered to belong to the Asse Clay, a slightly damaged individual (Pl. 1, fig. 1) may be determined (?) as *Globorotalia cerro-azulensis* (COLE).

In addition to these three species, each one based on but a single (!) individual, the samples from 178 to 87 m. contain several scattered Globigerinids. If an experienced specialist had to determine these individuals of greatly differing size and with variable features, without knowing where they came from, the total stratigraphic conclusion would be one of gross contamination, possible only in the dustbin of a laboratory for routine determinations of planktonics. Another solution might be that our knowledge of Nordic Paleogene planktonics is as yet too scanty.

At the crucial level of 125.50 m. a number of specimens found may belong to *Globigerina praebulloides praebulloides* BLOW and to its variant *G. praebulloides leroyi* BLOW and BANNER, neither of which is of exact stratigraphic value. We will refrain from listing other specific names on the basis of dubious material so that the reader is not tempted to draw stratigraphic conclusions.

THE BOOM CLAY ASSOCIATION.

For determination the author closely followed the work of BATJES (1958). Amongst some 30 determined foraminiferal taxa in the samples at 87 and 92 m., the most common forms are :

Spiroplectammmina carinata (D'ORBIGNY) with only a few small individuals of *S. deperdita* (D'ORBIGNY).

Karrieriella siphonella (REUSS). In addition to typical forms also the variants *chilostoma* (REUSS) and *asiphonia* (ANDREAE) are present.

Nonion affine (REUSS).

Cassidulina carapitana HEDBERG.

Ceratobulimina contraria (REUSS).

Gyroidina soldanii D'ORBIGNY with its variants *girardana* (REUSS) and *mamillata* (ANDREAE).

Cibicides dutemplei (D'ORBIGNY) and *C. praecinctus* (KARRER).

Other, less frequent to rare, but more or less characteristic constituents of the fauna are :

Haplophragmoides latidorsatus (BORNEMANN).

Turrilina alsatica ANDREAE.

Angulogerina gracilis (REUSS), mainly the *oligocaenica* (ANDREAE) variant, but also *tenuistriata* (REUSS).

Sphaeroidina bulloides D'ORBIGNY.

Pullenia bulloides (D'ORBIGNY).

Pullenia quinqueloba REUSS.

Svratkina perlata (ANDREAE).

Hoeglundina elegans (D'ORBIGNY).

Cibicides tenellus (REUSS) and occasional Lagenids of the genera *Guttulina*, *Globulina*, *Fissurina*, *Lenticulina* and *Lagena*.

All this certainly best fits in with BATJES' Boom Clay associations. There are some unknown, rare elements, such as *Karreriella* cf. *bradyi* (CUSHMAN) and *Rotalia propingua* REUSS. There are also distinctly derived elements, either from sedimentary reworking of older deposits such as *Rugoglobigerina* sp. at 95.50 m., or from higher deposits, probably due to caving in the borehole, such as *Pseudoeponides pseudotepidus* (VAN VOORTHUYSEN) and possibly *Hanzawaia boueana* (D'ORBIGNY) known from Pliocene and Miocene-Upper Oligocene deposits of the area, respectively.

At 95.50 m. the meagre association found is still of Boom Clay character, at 98 m. it is already so poor as to be indefinite.

THE ASSE CLAY ASSOCIATION.

The association at 178 m., which should belong to the Asse Clay because of the presence of the « bande noire » immediately underneath, is of poor preservation. The small *Nummulites* may be determined as *N. orbignyi*, but separation of this species from *N. variolarius* on the one hand from *N. germanicus* on the other, is considered dubious with our present imperfect knowledge of Nordic *Nummulites*.

Following KAASSCHIETER's review of the Belgian Eocene faunas (1961) nearly the entire assemblage from 178 m. can be determined. Representatives of the Anomaliniidae are rather frequent, but by no means predominant. The most frequent taxa are *Planulina burlingtonensis* (JENNINGS), *Cibicides proprius acutimargo* TEN DAM, *Loxostomum teretum* CUSHMAN (or rather *Bolivina nobilis* HANTKEN), *Spiroplectammia deperdita* D'ORBIGNY, *Textularia agglutinans* (D'ORBIGNY) and *Asterigerina bartoniana* TEN DAM (Pl. 3, fig. 1). Furthermore we may cite the presence of *Bolivina cookei* CUSHMAN, *Nonionella wemmelensis* KAASSCHIETER, *Cancris primitivus* CUSHMAN and TODD and *Bifarina selseyensis* (HERON-ALLEN and EARLAND).

Impoverished remnants of this association with some additional species were encountered in samples from 176, 168.50 and 167.50 m. Altogether 32 species were determined, which had been reported from the Eocene-Oligocene of the area by KAASSCHIETER and BATJES. Most of them are known from the Upper Eocene formations: Sands of Lede (27), Sands of Wemmel (28) and Asse Clay (24). Because of the lower total number of taxa known from the latter unit our association has proportionately somewhat more affinity with that from the Asse Clay: 25 % against some 20 % for Lede and Wemmel. Only 14 taxa are known from the Oligocene, amongst which only one (*Cassidulina subglobosa* var. BATJES) had not been reported from the Upper Eocene before.

As a whole we are dealing with a distinct Belgian Upper Eocene assemblage.

THE ASSOCIATION BETWEEN 124 AND 131 M.

Although the foraminiferal fauna is fairly rich in species, the number of individuals of most of the species is small, which renders a good analysis of the morphological features and of their variation impossible. As a consequence, determination is dubious if the specimens did not well fit in with the material described earlier. Open nomenclature had to be used for about one third of the taxa. Because of the scarce material we refrained in most cases from establishing new taxonomic units. Only one species has been described as new.

As primary reference for our determinations we used the collections of KAASSCHIETER and BAIJES, stored in the Utrecht Geological Institute. In the systematic description only remarks will be given, unless the species has not been reported before from the Belgian Older Tertiary by one of the authors mentioned above.

Apart from the foraminifera some individuals of a small number of ostracod species were encountered. In addition to immature, undeterminable specimens, individuals were found to fit in best with the following of KEIJ's species (1957). *Cyamocytheridea heizelensis* (KEIJ), *Krithe* cf. *bartonensis* (JONES), *Pterygocythereis tuberosa* KEIJ, *Trachyleberis horrescens* (BOSQUET), *Leguminocythereis striatopunctata* (ROEMER) and *Cytheretta gracilicosta* REUSS. The generic names were kindly made up to date by Dr. KEIJ.

From the environmental point of view it is clear that we are dealing with fully marine faunas between 124 and 131 m. Comparison with recent ecological data is hardly possible. If we compare our frequent *Nonion gulincki* via *N. boueanum* with the recent *Nonionella atlantica*, this would indicate a marine pelitic environment of rather shallow depth, of for instance less than 75 m. The other faunal elements do not seem to be in contradiction with such an assumption.

There may have been some shallowing with (or) increased transport during deposition of the 131-124 m. interval. At the bottom the small association resembles that of the clayey Middle Oligocene Boom Clay better than that of 125-127 m. Higher up the *Nonion gulincki* fauna is followed at 124 m. by sands with numerous *Nummulites* only.

If we now try to weigh the total stratigraphic evidence from the assemblage 124-131 m. no clear conclusions can be drawn. The fauna is different from all other associations described earlier. The stratigraphic question, whether we have to place the Eocene-Oligocene boundary above, at, or below this interval cannot be solved with certainty.

The foraminiferal association is neither that from the Upper Eocene Asse Clay or Wemmel Sands, nor that of the Boom Clay. The bulk of the species, including the *Nummulites*, must be considered neutral to the question. Because of the presence of *Asterigerina* and *Alabamina wolterstorffi* also the fauna from the Lower Tongeren Formation of Hendrik IV, is different. Although the assemblage shows a mixture of Eocene and Oligocene elements, it has a character of its own, such as the relative abundance of *Nonion gulincki*.

There is a slight predominance of Upper Eocene elements, such as *Bolivina cookei*, *Uvigerina spinicostata*, *Globulina gibba punctata*, *Anomalina grosserugosa* and frequent *Spiroplectamina deperdita*. On the other hand, Oligocene elements, apart from *Bolivina fastigia* and some forms at 131 m. could not be determined with certainty. The single *Cassigerinella chipolensis* points to the Oligocene side of the balance. However, the small assemblage of ostracoda again fits in better with the Eocene faunas of KEIJ, not with the Oligocene ones.

This overall conclusion of a mixed fauna of rather Eocene aspect is the same as that drawn by BATJES and KEIJ for the association from shaft Hendrik IV, taken from the Lower Tongeren Formation. If of equal age, environmental influences might have been responsible for the differences in the associations. In this respect it is worth mentioning that the more Oligocene aspect of the small assemblage at 131 m. with *Bulimina* cf. *alsatica*, *Angulogerina gracilis tenuistriata*, *Spiroplectammina carinata*, *Cassidulina subglobosa* var., *Sphaeroidina bulloides* and *Cassigerinella chipolensis*, probably relates to environment, reflected in the more clayey sediment.

CORRELATIONS AND THE EOCENE-OLIGOCENE BOUNDARY.

If we neglect the evidence from the single *Cassigerinella* specimen and the associated elements at 131 m., we are tempted to place the major faunal break, that should correspond according to the ideas of classical stratigraphy to the Eocene-Oligocene boundary, above 124 m. in the Kallo boring. This leaves some 20-25 m. of sandy deposits below the Boom Clay which might be equated with the Sands of Berg. This thickness compares well with that of the Berg Sands east and west of Antwerp. Below these « Sands of Berg », we might conceive the « Lower Tongrian » overlying « Asse Sands », which in turn would merge into uncharacteristic « Asse Clay » at for instance 150 m. depth. Such a solution might somehow meet our ideas about the classical stratigraphy of the area, it is hardly more than wishful thinking.

During the recently held « Colloque sur l'Éocène » in Paris (1968) it has been proposed to place the Eocene-Oligocene boundary below the Sands of Grimmeringen and its equivalents, because in Germany the nannofossil *Ellipsolithus subdisthicus* had been found in sediments correlated with the type Lattorfian. If we take for granted these correlations of various « sandy » deposits below the Boom Clay and the German Septaria Clay, it follows that the Eocene-Oligocene boundary should preferably be placed below 131 m. in the Kallo boring, somewhere in the barren sandy and clayey sediments underneath. In itself, there is nothing against this solution, because such a boundary would not be worse for wider recognition than the previous one.

However, completely new problems seem to arise. Several papers of French origin (e.g. P. BRONNIMANN *et al.*, C. CAVALIER, C. POMEROL, all three 1968) suggest that not only should the Sands of Lede be placed in the Lutetian — the classical Middle Eocene stage — but also the Sands of Wemmel. Planktonic foraminifera and nannofossils would support such a correlation. Consequently, we might wonder whether the Asse Clay can be maintained outside this Lutetian.

Although the Wemmel Sands commonly underlie the Asse Clay in their type area, they wedge out in northwestern, supposedly offshore, direction between the Sands of Lede and the Asse Clay. This Wemmel unit is hard to imagine without contemporaneous offshore sediments in the north. Its open marine microfauna seems to contradict a position lateral of the Lede Sands with their typical shallow water, miliolid associations. The distribution of *Nummulites orbigny* formerly favoured the idea that Wemmel Sands and Asse Clay are more likely to belong together. Because both units are in contact with the underlying Lede Sands (see KAASSCHIETER, maps 17, 18) and because the lower part of the Asse Clay contains a nearly identical, though somewhat impoverished microfauna, also KAASSCHIETER (1961) supported the opinion of

many Belgian authors that Asse Clay and Wemmel Sands are roughly synchronous units. Suggestions, not only of successive units, but even separation by a considerable gap in the record (C. CAVALIER, 1968, p. 523) certainly is a novel idea.

If we are no longer certain that at the lower end, Wemmel Sands and Asse Clay can be kept outside the expanding Lutetian, and if at the top the Sands of Grimmertingen are placed back into the Lower Oligocene, nothing but some uncharacteristic upper Asse Clay and dubious Asse Sands would represent the Belgian Upper Eocene. This is probably exaggerated, but we have to consider seriously the presence either of one or more major breaks in the sedimentation more important than suspected so far, or rather of a strongly condensed sequence corresponding to the Upper Eocene. Is this the reason that practically everywhere the sediments that seem to straddle the Eocene-Oligocene boundary suffered from intense decalcification?

As a final result we may assume that it becomes more and more unlikely that we will ever be able to give, on foraminiferal evidence, a biostratigraphic background to the Eocene-Oligocene boundary in the Belgian part of the North Sea basin that would stand outside this limited area. We might just as well look for an agreement on successions in more favourable sediments farther south, for instance on those of the type Priabonian and overlying strata in Italy. Because it seems unlikely that the type region of the Oligocene and of some of the « Upper Eocene » stages would ever be able to contradict a boundary defined elsewhere, at least not on the basis of foraminifera.

SYSTEMATIC DESCRIPTION OF THE FORAMINIFERA

No references are given for species recorded by BATJES (1958) and/or KAASSCHIETER (1961) from the Belgian Oligocene and Eocene. The reader is referred to their papers for the literature and more details. All other consulted literature on Nordic Eocene and Oligocene foraminifera appeared to give very few additional data for determining forms that could not be found clearly in the above two references.

Spiroplectammina carinata (D'ORBIGNY).

At 131 m. two well-preserved specimens were found, which are easily separable from those of the next species. The presence of *S. carinata* at this level and not in the higher samples from 124-127 m. may relate to the more clayey character of the sediment at 131 m.

Spiroplectammina deperdita (D'ORBIGNY).

(Pl. 1, fig. 4.)

Five individuals from 125.50 m., and more than 10 from 127 m. clearly belong to this species, although variation seems to include types approaching *S. adamsi* LALICKER.

The relative frequency of both our *Spiroplectammina* species is reported to differ in the Belgian Eocene and Oligocene. KAASSCHIETER found *S. deperdita* to outnumber *S. carinata* in the entire Upper Eocene (Lede-Asse) with the exception of a few samples in the Asse Clay. Predominance of *S. carinata* and intergradation into *S. deperdita* were reported by BATJES to be usual for the Oligocene deposits. As a consequence the relation found in our samples seems to favour an Eocene age.

Textularia sp.

(Pl. 1, fig. 5.)

Two individuals (127 m.), broken at the apertural end, show strongly inflated chambers and a rather truncated periphery. Similar forms were not found in the Belgian Eocene-Oligocene collections stored in Utrecht.

Karrerella sp.

(Pl. 1, fig. 6.)

A single small specimen from 131 m. possibly represents an immature individual of the Upper Eocene-Oligocene *K. siphonella* (REUSS), somewhat resembling the *globulifera* variant, as figured by ANDREAE (1884, pl. 7, fig. 9).

Lenticulina spp.

(Pl. 1, figs. 7 and 8.)

Eight individuals from 125.50 m. and ten others from 127 m. show a wide variation in size. Some somewhat resemble KAASSCHIETER's *L. cf. L. jugosa* (CUSHMAN

and THOMAS) and *L. cf. L. costata* (D'ORBIGNY) from the Asse Clay of Oedelem. The majority agrees fairly well with BATJES' collection of *Lenticulina* spp. from the Lower Tongeren Formation of shaft Hendrik IV in Dutch Limburg.

***Dentalina ludwigi* (REUSS).**

(Pl. 1, fig. 9.)

Two completely costate specimens (125.50 m.) well agree with the Eocene and Oligocene forms of this species in the Utrecht collections. The species occurs in the Upper Eocene (Wemmel, Asse) and Oligocene (Boom).

***Dentalina cf. intermittens* (ROEMER).**

(Pl. 1, fig. 10.)

One fragment (127 m.) with striae over the depressed sutures which do not continue on the inflated part of the chambers.

***Guttulina irregularis* (D'ORBIGNY).**

(Pl. 1, fig. 11.)

Two distinct individuals (127 m.) which may represent young stages of the next species.

***Guttulina problema* (D'ORBIGNY).**

Another two individuals from 127 m. which agree fairly well with the figures of this species.

***Guttulina lactea* (WALKER and JACOB).**

Some four individuals (127 m.), which are not well separable from those of *G. problema*.

***Globulina gibba* (D'ORBIGNY).**

(Pl. 1, fig. 12.)

Many specimens were found which distinctly belong to this species: 125.10 m. (2), 125.50 m. (8), 127 m. (10).

***Globulina gibba* (D'ORBIGNY) var. *punctata* D'ORBIGNY.**

(Pl. 1, fig. 13.)

Some distinct specimens were found at 125.10 m. (1) and 127 m. (2). KAASSCHIETER recorded this variant from the Belgian Eocene up to the Asse Clay.

***Glandulina laevigata* (D'ORBIGNY).**

(Pl. 2, fig. 1.)

One individual from 127 m. is thought to belong to this species.

***Nonion gulincki* n.sp.**

(Pl. 2, figs. 2-4.)

E t y m o l o g y: Named in honour of Ir. M. GULINCK of the Geological Survey of Belgium, Brussels.

H o l o t y p e : Pl. 2, fig. 2, Coll. no. S.26886, Utrecht.

P a r a t y p e s : Some 20 individuals.

T y p e l o c a l i t y : Boring at Kallo, near Antwerp, Belgium.

T y p e l e v e l : Eocene-Oligocene transitional strata in the Kallo boring, at a depth of 127 m.; lower s_3 in subdivision of GULINCK, 1968.

D i a g n o s i s : A species of the *Nonion scaphum* group, characterized by the thick test and the broad, subtriangular apertural face of all encountered individuals of the assemblage.

D e s c r i p t i o n : Test of considerable size, thick, planispiral, involute, with chambers rapidly increasing in length; some 8-11 chambers in the final whorl, commonly 9 or 10; chambers slightly inflated especially so in the later part of the test, sutures correspondingly depressed, curved; chambers broadening towards their base, bulging over the umbilical area; umbilicus commonly small with more or less distinct granules; wall smooth; periphery narrowly rounded; apertural face subtriangular, broadening towards the base; aperture a low, basal, median slit. Length range from 360 to 650 μ .

R e m a r k s : According to some authors the generic name *Florilus* had better be applied to the new species. The rather big individuals differ from *N. scaphum* (FICHTEL and MOLL) or its near-relative *N. boueanum* (D'ORBIGNY) by their greater thickness caused by strong broadening of the basal part of the chambers. The apertural face thus obtains a subtriangular outline. Similar forms occur as variants at Oedelem in the Asse Clay and in shaft Hendrik IV in the Lower Tongeren Formation, but in these collections of KAASSCHIETER and BATJES they are outnumbered by the much flatter usual type of *N. scaphum* and *N. boueanum* respectively.

D i s t r i b u t i o n : In addition to five specimens at 125.50 m this form is common at 127 m. Whether this predominance of thick individuals in the Kallo boring reflects some environmental influence or is of local stratigraphic value cannot yet be evaluated.

***Nonion graniferum* (TERQUEM).**

(Pl. 2, fig. 5.)

Two individuals (127 m.) closely resemble KAASSCHIETER's Eocene *N. graniferum*. Possibly BATJES' *N. granosum* (D'ORBIGNY) from the Lower Tongeren Beds of Hendrik IV shaft had better be placed in this species as well.

***Nonion affine* (REUSS).**

(Pl. 2, fig. 6.)

A few individuals were found (125.50 and 127 m.) of rather different size, which caused no determination difficulties. Reported from Early Eocene to Miocene.

***Turrilina cf. alsatica* ANDREAE.**

(Pl. 2, figs. 7 and 8.)

There are five specimens at 125.50 m. variable in size and relative length. The biggest and proportionately longest individual agrees best with the Oligocene *T. alsatica*.

tica. Because this individual was broken during preparation for drawing, a similar specimen from the Boom Clay at 87 m. was taken instead (fig. 7). The smaller individuals are shorter and they would be closer to the Eocene *T. brevispira* TEN DAM. Comparison with the suites of specimens of both species in the Belgian material of BATJES and KAASSCHIETER shows that the specific boundary on the basis of relative length of the test is rather vague. In both suites there is considerable variation, showing wide overlap, and the tendency to increase the relative length with increasing size. Big individuals of *T. alsatica* are relatively longest, but the Oligocene material reaches bigger size.

The small and short individuals in our material (fig. 8) are *Caucasina*-like, but the same is true in the stored Belgian material of both *Turritina* species, in which more buliminoid apertures occur as well. These individuals seem to be different from *C. coprolithoides* (ANDREAE) and *T. carteri* (BHATIA), mainly in the shape and position of the aperture.

Bulimina cf. alsatica (CUSHMAN and PARKER).

(Pl. 2, fig. 9.)

Our single individual (131 m.) differs from *B. alsatica* by possessing blunt spines rather than short costae at the initial end of the test. The general shape better resembles ANDREAE's figure (*B. inflata*) than that of BATJES. There is some resemblance with the Pliocene *B. echinata* D'ORBIGNY (CUSHMAN and PARKER, 1947, *U. S. Geol. Survey*, Prof. Paper 210-D, p. 115, pl. 26, fig. 23, 24) which is more elongate.

Reussella limbata (TERQUEM).

(Pl. 2, fig. 10.)

A single, not well-preserved individual from 125.50 m., which amongst the four Eocene *Reussella* species of KAASSCHIETER, best resembles his *R. limbata*.

Uvigerina spinicostata CUSHMAN and JARVIS.

(Pl. 2, fig. 11.)

Three well-developed individuals (125.10 m.) are closest to the individuals of this species reported by KAASSCHIETER from the Asse Clay. Comparison with the material from Oedelem shows that our specimens are somewhat stouter, less tending to a biserial arrangement of the later chambers, and have slightly fainter costae.

Angulogerina gracilis (REUSS) var. **tenuistriata** (REUSS).

(Pl. 3, fig. 2.)

A single individual from 131 m. seems to be closest to the *tenuistriata* variant of this Oligocene species. It is less angular than the individual figured by BATJES.

Bolivina cookei CUSHMAN.

(Pl. 3, fig. 3.)

Two different, but closely adjoining types of ornamentation were found amongst our *Bolivina* individuals. There is no clear intergradation. The majority (some 10 individuals), found at 125.50 m. have numerous fine costae, best resembling KAASSCHIETER's *B. cookei* (Pl. 8, fig. 26). This type is also most numerous in KAASSCHIETER's collection from the Asse Clay of Oedelem. These forms also resemble *B. striatella jacksonensis* CUSHMAN and APPLIN from the North American Upper Eocene.

***Bolivina fastigia* CUSHMAN.**

(Pl. 3, fig. 4.)

The second *Bolivina* type, found at 125.50 and 127 m., has more undulating sutures and fewer costae, of less regular course with commonly a stronger median one. This form is closer to *B. fastigia*, commonly reported from the Nordic Oligocene. Our individuals better resemble those figured by BHATIA (1955, pl. 66, fig. 15, textf. 5) from the Hamstead *Corbula* beds than those from BATJES' North Sea Upper Oligocene.

***Cassidulina subglobosa* BRADY var. BATJES.**

(Pl. 3, fig. 5.)

A single individual from 131 m. closely resembles BATJES' unnamed, compressed variant from the Oligocene. *Cassidulina* species were not reported by KAASSCHIETER from the Belgian Eocene, but a very similar individual was found at 167.50 m. in the Asse Clay interval of the Kallo boring.

***Cassidulina* sp.**

(Pl. 3, fig. 6.)

A single, small, lenticular individual of the *laevigata*-type was encountered at 131 m.

***Sphaeroidina bulloides* D'ORBIGNY.**

(Pl. 3, fig. 7.)

One ill-preserved specimen of this species, reported to be frequent in the Belgian Oligocene and seemingly absent from the Eocene, was found in the clay at 131 m.

***Discorbis* cf. *limbata* (TERQUEM).**

A single very small individual that might belong to this species, found at 131 m.

***Cancris subconicus* (TERQUEM).**

(Pl. 3, fig. 8.)

Single individuals of this Eocene-Oligocene species were found at 125.50 m. and 127 m.

***Valvulineria* cf. *petrolei* (ANDREAE).**

(Pl. 3, fig. 9.)

Some ten individuals (125.50 m.) of wide size range are hard to place generically. Big individuals (fig. 9) are thicker and dorsally more involute than the Oligocene *V. petrolei* and they lack the distinct apertural flap. The majority of our individuals are smaller forms, which are less thick and flatter and more evolute dorsally, and therefore resemble *V. petrolei* better. Their somewhat depressed dorsal spiral suture resembles that of *Gyroidina* species.

***Gyroidina* cf. *octocamerata* CUSHMAN and HANNA.**

(Pl. 4, fig. 1.)

Four individuals of different size were found at 127 m. The smaller ones resemble *G. octocamerata* fairly well, the bigger ones are closer to *G. soldanii* as figured by BATJES (pl. 7, fig. 13, 14) and to KAASSCHIETER'S *G. cf. soldanii* from the Asse Clay.

Anomalina grosserugosa (GÜMBEL).

(Pl. 4, fig. 2.)

A single distinct individual was found at 127 m. This species has been reported from the Belgian Eocene.

Cibicides dutemplei (D'ORBIGNY).

(Pl. 4, figs. 3 and 4.)

Representatives of *Cibicides* form the most common group in our samples. Some 45 specimens were found at 125.50 m. and some 30 at 127 m. Although clusters might correspond to different species of the literature, it appeared impossible to place all individuals, especially so the smaller ones. Intermediates between the three main groups seem to be present in both samples. The relative proportion of the groups is not identical in both samples.

The central group can best be identified with the long ranging Tertiary *C. dutemplei*, with indistinct delimitation to both sides. It is the most frequent group at 127 m., but not at 125.50 m.

Cibicides lobatulus (WALKER and JACOB).

(Pl. 5, fig. 1.)

This is the most common group with some 30 individuals at 125.50 m. Most of the specimens are small, some with a distinct glassy umbilical knob. Resemblance with KAASSCHIETER's *C. cf. tenellus* (REUSS) and his *C. westi* HOWE is occasionally present. In this sample, but also at 127 m., thick variants best resemble BATJES' *C. lobatulus* var. from the Lower Tongeren Formation of shaft Hendrik IV.

Cibicides pygmaeus (HANTKEN).

(Pl. 5, fig. 2.)

This name stands for the least distinct group and in our interpretation the most variable one, such as in the number of chambers in the final convolution. Especially at 127 m. the specimens with relatively few chambers in the final coil are close to KAASSCHIETER's concept of *C. pygmaeus* (HANTKEN). Other individuals seem to be closer to *C. sulzensis* (HERMANN). There is never a glassy filling in the umbilicus. All individuals share the strongly evolute character of the dorsal side.

Cribronion subnodosum (ROEMER).

(Pl. 5, figs. 3 and 4.)

This species (*sensu lato*) occurs at 125.50 m. (4 individuals) and at 127 m. with nine. Our specimens never show a well separated keel as in BATJES' forms from the Upper Oligocene, but the periphery is narrowly rounded. The sutures are often hardly depressed, if at all. At 125.50 m. they show distinct open fissures frequently subdivided, in the other sample the sutures are rather closed. The number of chambers in the final whorl varies from 11 to 15, usually it is 12. Some individuals somewhat resemble *Elphidium laeve* (D'ORBIGNY) of KAASSCHIETER's collections (p. 239, pl. 16, fig. 17, 18) which has a more distinct depression around the umbilical mass.

Nummulites sp.

(Pl. 5, figs. 5 and 6.)

In addition to the numerous fragments at 124 m., some others were found at 125.50 and 127 m. All show but few of the features of the individuals. Evidently we are dealing with a rather flat species, thickest in the central part with distinctly recurring sutures. These *Nummulites* have no stratigraphic value, greater than the other foraminifera, because, for a specific determination, it is impossible to choose between *N. orbigny-wemmelensis* and *N. germanicus*, thought to be characteristic for the Upper Eocene and the Lower Oligocene of the North Sea Basin respectively. If we determine the specimens from the Asse Clay at 178 m. (fig. 5) as *N. orbigny* (GALEOTTI), there is no reason to give another name to those from 127-124 m. (fig. 6).

ACKNOWLEDGEMENTS.

The author is gratefully indebted to Ir. M. GULINCK of the « Aardkundige Dienst van Belgie » (Brussels) for making the samples available for study and for the discussion of the results, to A. VAN DOORN, J. P. VAN DER LINDEN and P. HOONHOUT (Utrecht) for their drawings, to Dr. W. H. BLOW (London) for his critical look at the planktonic foraminifera, to Drs. P. MARKS and J. P. MEULENKAMP (Utrecht) for discussing the problems and the manuscript.

REFERENCES

- ANDREAE, A., 1884, Beitrag zur Kenntnis des Elsässer Tertiärs. Part II : Die Oligozänschichten im Elsass. Abh. Univ. Heidelberg.
- BATJES, D. A. J., 1958, Foraminifera of the Oligocene of Belgium. (*Verh. Kon. Belg. Inst. Natuurw.*, no 143.)
- BHATIA, S. B., 1955, The foraminiferal fauna of the Late Paleogene sediments of the Isle of Wight, England. (*J. Paleont.*, vol. 29, 665-693.)
- BRÖNNIMANN, P., CURRY, D., POMEROL, CH. et E. SZÖTS, 1968, Contribution à la connaissance des foraminifères planctoniques de l'Eocène (incluant le Paléocène) du bassin anglo-franco-belge. In Colloque sur l'Eocène, Paris. (*Mém. Bur. Rech. Géol. et Min.*, no 58, 101-108.)
- CAVALIER, C., 1968, L'Eocène supérieur et la base de l'Oligocène en Europe occidentale. (*Ibid.*, 508-527.)
- DAM, A. TEN, 1944, Die stratigraphische Gliederung des niederländischen Paläozäns und Eozäns nach Foraminiferen. (*Meded. Geol. Sticht.*, ser. C-V, no. 3.)
- DAM, A. TEN und REINHOLD, TH., 1942, Die stratigraphische Gliederung des niederländischen Oligo-Miozäns nach Foraminiferen. (*Ibid.*, no. 2.)
- DROOGER, C. W., 1964, Les microfaunes de l'Eocène-Oligocène du bassin nordique. In Colloque sur le Paléogène, Bordeaux. (*Mém. Bur. Rech. Géol. Min.*, no. 28, 547-552.)
- GRAMANN, F., 1964, Die Arten der Foraminiferen-Gattung *Asterigerina* D'ORB im Tertiär NW. Deutschlands. (*Paläont. Zeitschr.*, vol 38, 207-222.)
- GULINCK, M., 1968, Le passage Oligocène-Eocène dans le sondage de Kallo et le Nord de la Belgique. In press.
- KAASSCHIETER, J. P. H., 1961, Foraminifera of the Eocene of Belgium. (*Verh. Kon. Belg. Inst. Natuurw.*, no. 147.)
- KEIJ, A. J., 1957, Eocene and Oligocene Ostracoda of Belgium. (*Ibid.*, no. 136.)
- POMEROL, CH., 1968, Sur la corrélation du Lédien avec les formations éocènes du bassin de Paris. In Colloque sur l'Eocène, Paris. (*Mém. Bur. Rech. Géol. et Min.*, no. 58, 553-560.)

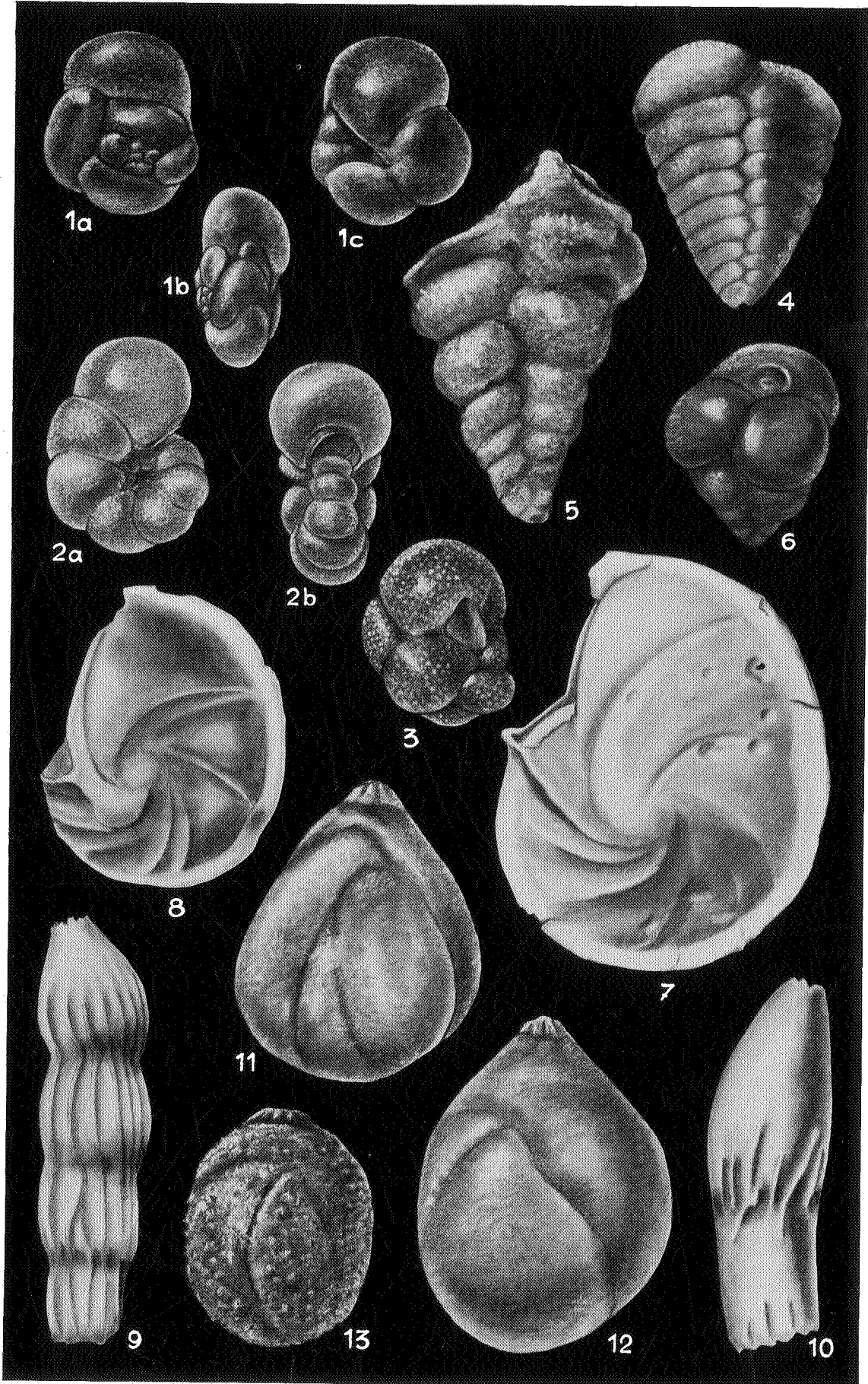
THE UNIVERSITY OF CHICAGO PRESS
50 EAST LAKE STREET
CHICAGO, ILLINOIS 60607
TEL: 773-707-3000
WWW.UCHICAGO.PRESS.COM

PLATE 1

EXPLANATION OF PLATE 1.

- FIG. 1. — *Globorotalia cerro-azulensis* (COLE). a. dorsal view, b. apertural view, c. ventral view. Kallo 167.50 m. Asse Clay, $\times 75$.
- FIG. 2. — *Pseudohastigerina wilcoxensis* (CUSHMAN & PONTON). a. side view, b. apertural view. Kallo 178 m. Asse Clay, $\times 95$.
- FIG. 3. — *Cassigerinella chipolensis* (CUSHMAN & PONTON), side view. Kallo 131 m., $\times 115$.
- FIG. 4. — *Spiroplectammina deperdita* (D'ORBIGNY), side view. Kallo 127 m., $\times 45$.
- FIG. 5. — *Textularia* sp., side view. Kallo 127 m., $\times 45$.
- FIG. 6. — *Karreriella* sp., side view. Kallo 131 m., $\times 85$.
- FIG. 7, 8. — *Lenticulina* sp., side view. Kallo 125.50., $\times 30$.
- FIG. 9. — *Dentalina ludwigi* (REUSS). Kallo 125 50 m., $\times 30$.
- FIG. 10. — *Dentalina* cf. *intermittens* (ROEMER). Kallo 127 m., $\times 30$.
- FIG. 11. — *Guttulina irregularis* (D'ORBIGNY). Kallo 127 m., $\times 60$.
- FIG. 12. — *Globulina gibba* (D'ORBIGNY). Kallo 127 m., $\times 60$.
- FIG. 13. — *Globulina gibba* (D'ORBIGNY) var. *punctata* D'ORBIGNY. Kallo 127 m., $\times 60$.
-

PLATE 1



C. W. DROOGER. — Microfauna close to the Eocene-Oligocene boundary in the boring at Kallo, near Antwerp.

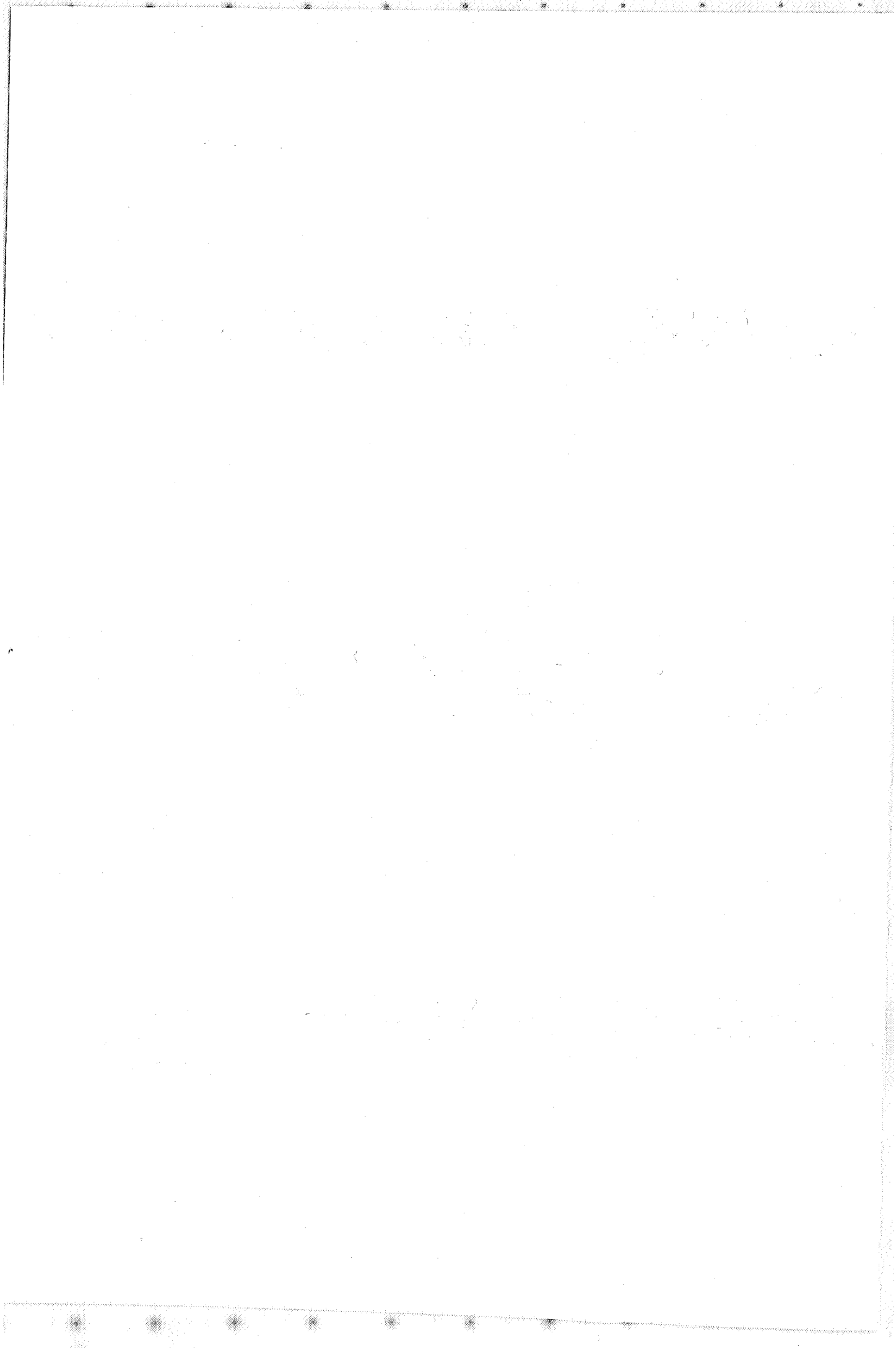
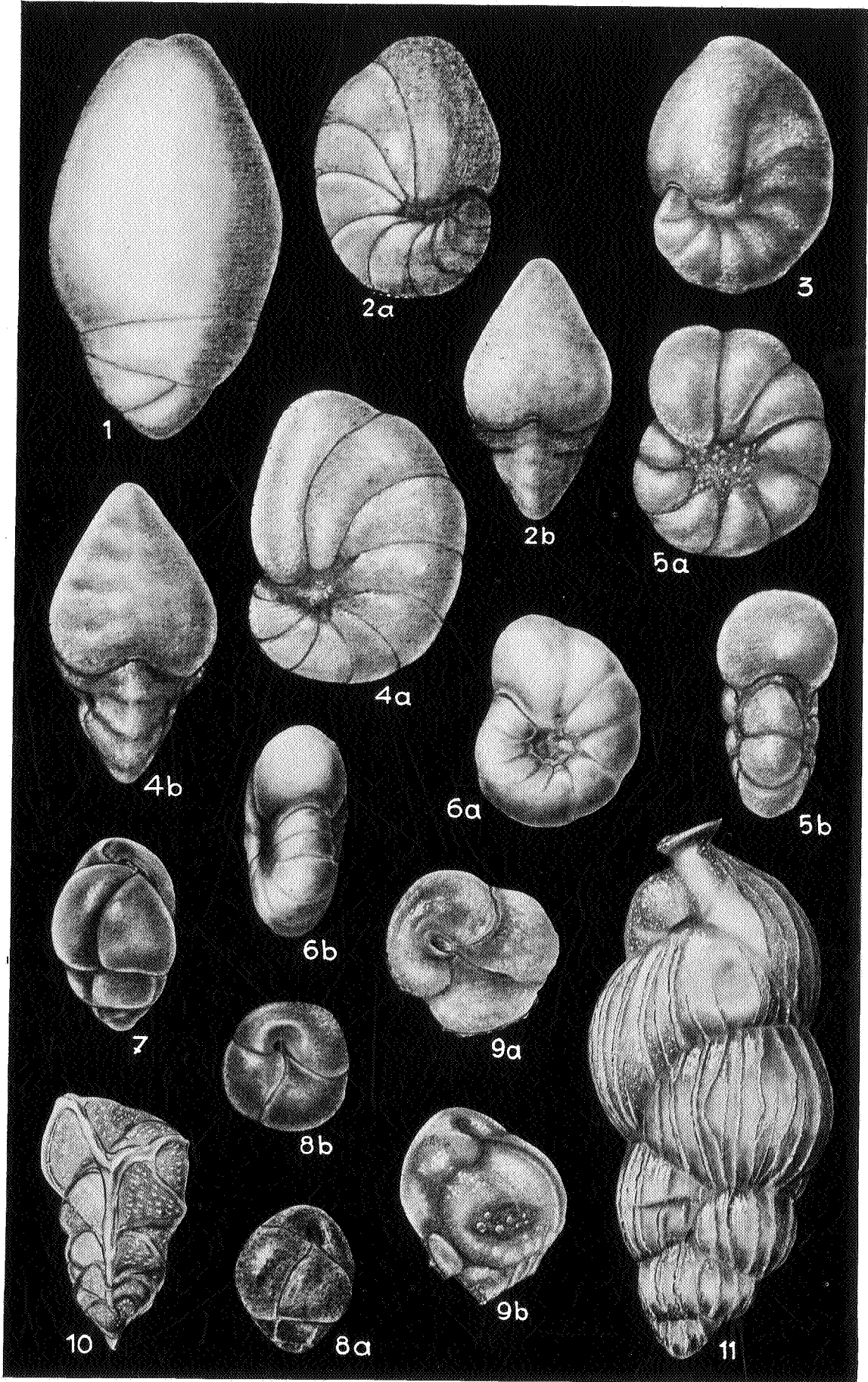


PLATE 2

EXPLANATION OF PLATE 2.

- FIG. 1. — *Glandulina laevigata* (D'ORBIGNY). Kallo 127 m., ×60
- FIG. 2-4. — *Nonion gulincki* n.sp. 2. holotype, 3, 4. paratypes. 2 a. oblique side view; 3, 4 a. side views; 2 b, 4 b. apertural views. Kallo 127 m., lower S₁ member, Eocene-Oligocene transitional strata, ×45.
- FIG. 5. — *Nonion graniferum* (TERQUEM). a. side view, b. apertural view. Kallo 127 m., ×45.
- FIG. 6. — *Nonion affine* (REUSS). a. side view, b. apertural view. Kallo 127 m., ×45
- FIG. 7. — *Turrilina alsatica* ANDREAE, side view. Kallo 87 m., Boom Clay, Oligocene, ×75.
- FIG. 8. — *Turrilina* cf. *alsatica* ANDREAE. a. side view, b. apertural view. Kallo 125.50 m., ×100.
- FIG. 9. — *Bulimina* cf. *alsatica* (CUSHMAN & PARKER). a. side view, b. apertural view. Kallo 131 m., ×110.
- FIG. 10. — *Reussella limbata* (TERQUEM). Kallo 125.50 m., ×80.
- FIG. 11. — *Uvigerina spinicostata* CUSHMAN & JARVIS. Kallo 125.10 m., ×95.
-

PLATE 2



C. W. DROOGER. — Microfauna close to the Eocene-Oligocene boundary in the boring at Kallo, near Antwerp.

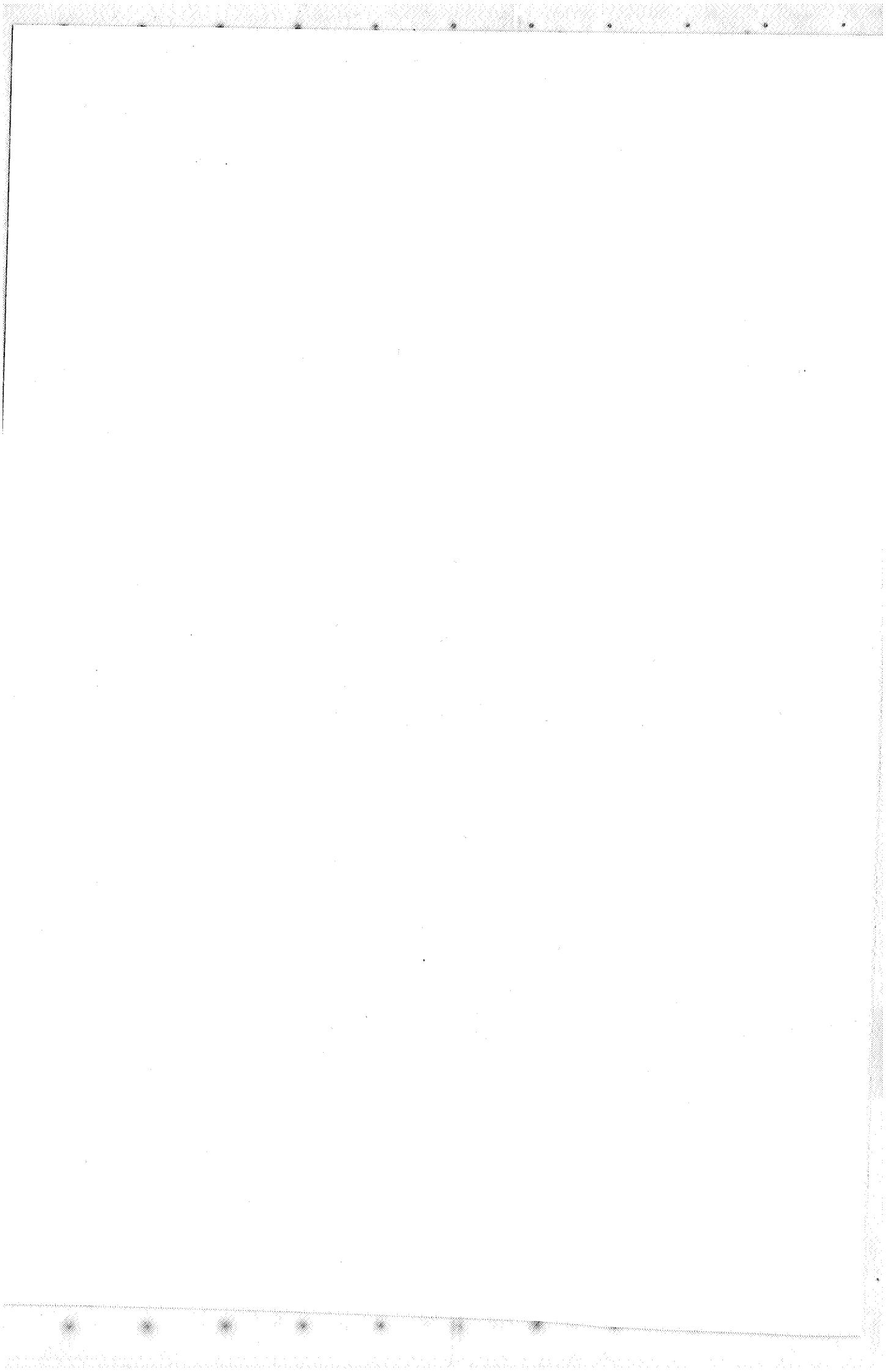
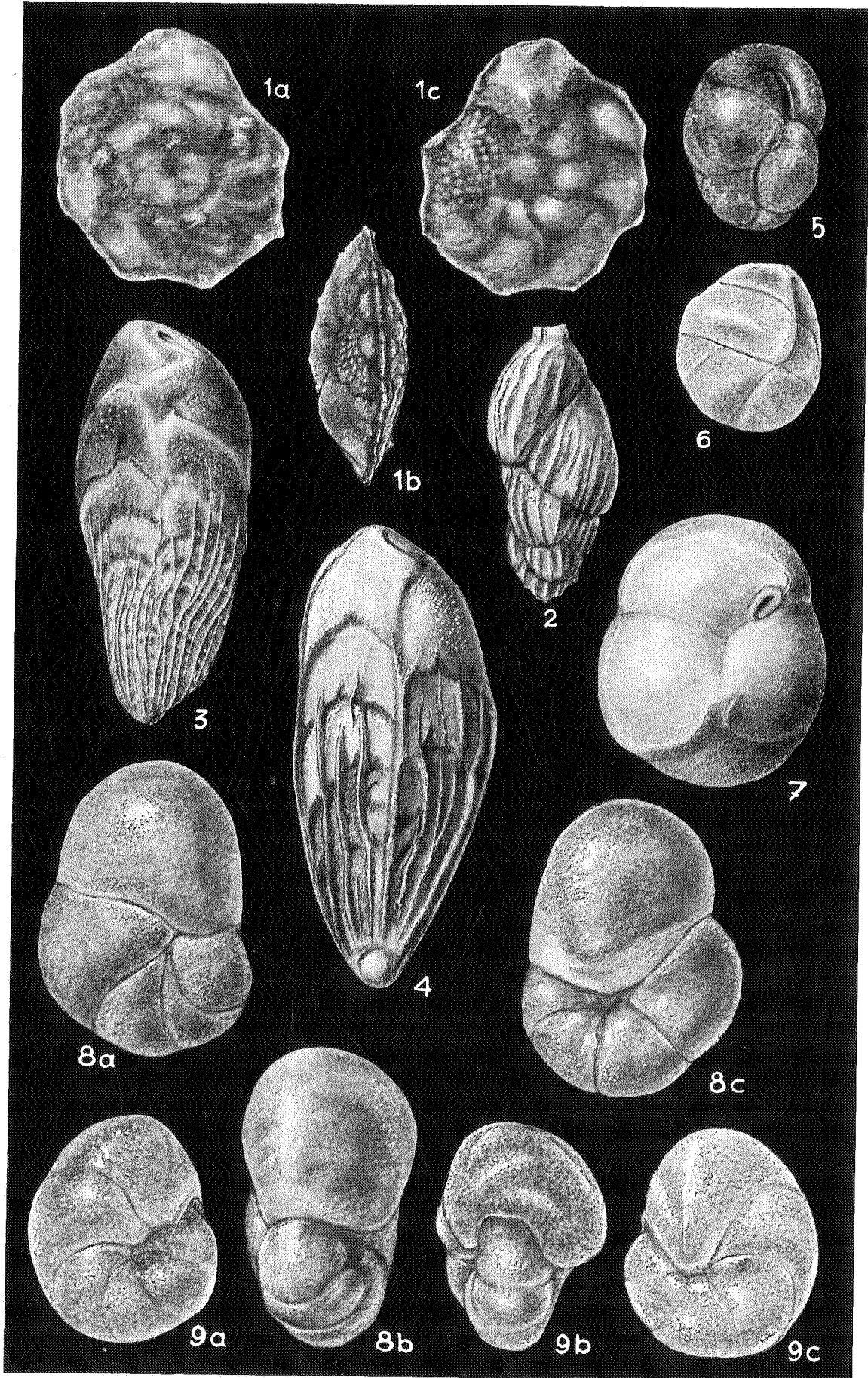


PLATE 3

EXPLANATION OF PLATE 3.

- FIG. 1. — *Asterigerina bartoniana* TEN DAM. a. dorsal view, b. peripheral view, c. ventral view. Kallo 178 m., Asse Clay, $\times 35$.
- FIG. 2. — *Angulogerina gracilis* (REUSS) var. *tenuistriata* (REUSS), side view. Kallo 131 m., $\times 95$.
- FIG. 3. — *Bolivina cookei* CUSHMAN, side view. Kallo 125.50 m., $\times 95$.
- FIG. 4. — *Bolivina fastigia* CUSHMAN, side view. Kallo 127 m., $\times 95$.
- FIG. 5. — *Cassidulina subglobosa* BRADY var. BATJES, oblique side view. Kallo 131 m., $\times 115$.
- FIG. 6. — *Cassidulina* sp., side view. Kallo 131 m., $\times 80$.
- FIG. 7. — *Sphaeroidina bulloides* D'ORBIGNY. Kallo 131 m., $\times 85$.
- FIG. 8. — *Canceris subconicus* (TERQUEM). a. dorsal view, b. apertural view, c. ventral view. Kallo 125.50 m., $\times 60$.
- FIG. 9. — *Valvulineria* cf. *petrolei* (ANDREAE). a. dorsal view, b. apertural view, c. ventral view. Kallo 125.50 m., $\times 85$.
-

PLATE 3



C. W. DROOGER. — Microfauna close to the Eocene-Oligocene boundary
in the boring at Kallo, near Antwerp.

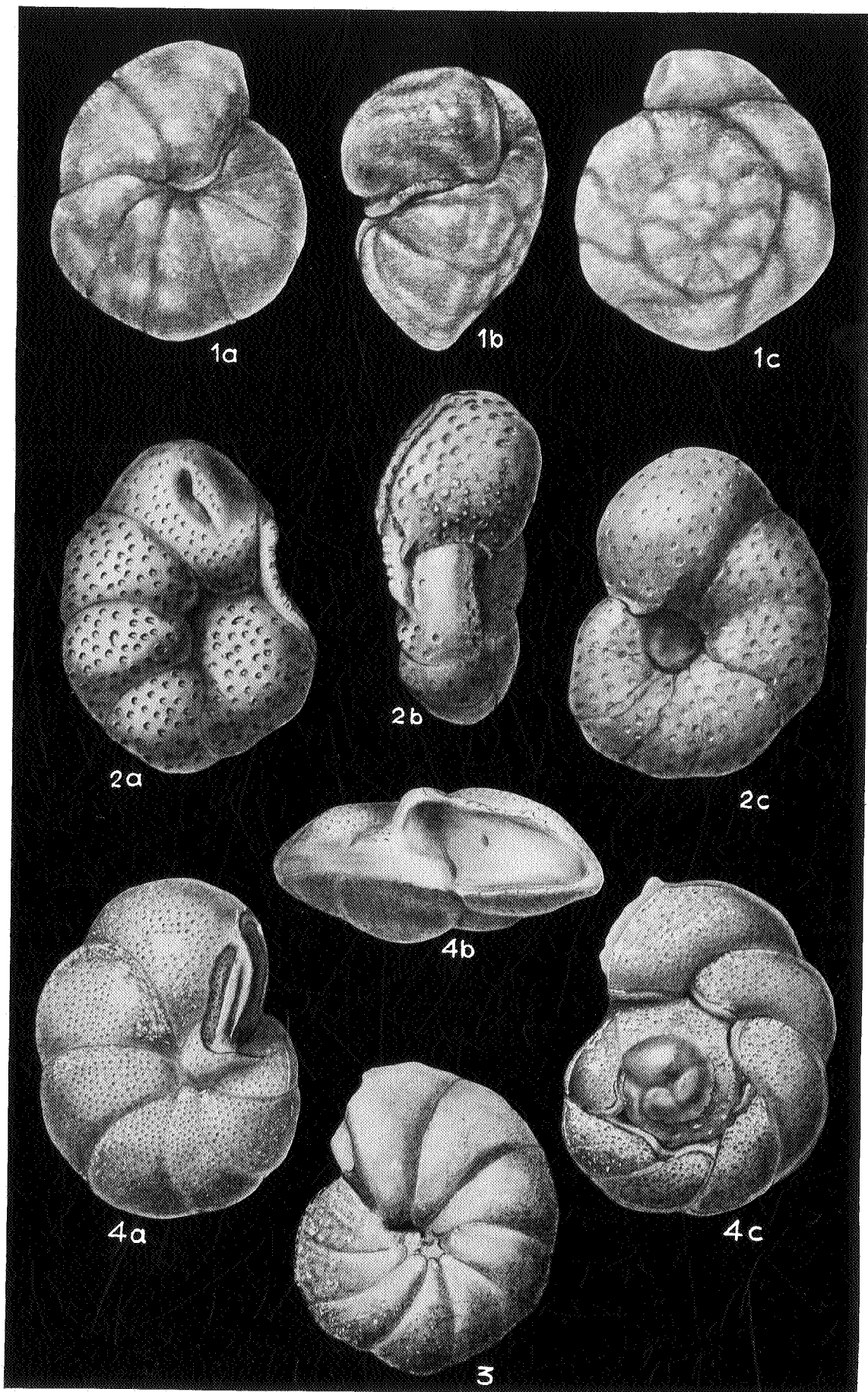


PLATE 4

EXPLANATION OF PLATE 4.

- FIG. 1. — *Gyroidina* cf. *octocamerata* CUSHMAN & HANNA. a. ventral view, b. apertural view, c. dorsal view. Kallo 127 m., $\times 50$.
- FIG. 2. — *Anomalina grosserugosa* (GÜMBEL). a, c. side views, b. apertural view. Kallo 127 m., $\times 60$.
- FIG. 3, 4. — *Cibicides dutemplei* (D'ORBIGNY). 3, 4 a. ventral views, 4 b. apertural view, 4 c. dorsal view. Kallo 125.50 (fig. 4) and 127 m. (fig. 3), $\times 60$.
-

PLATE 4



C. W. DROOGER. — Microfauna close to the Eocene-Oligocene boundary in the boring at Kallo, near Antwerp.

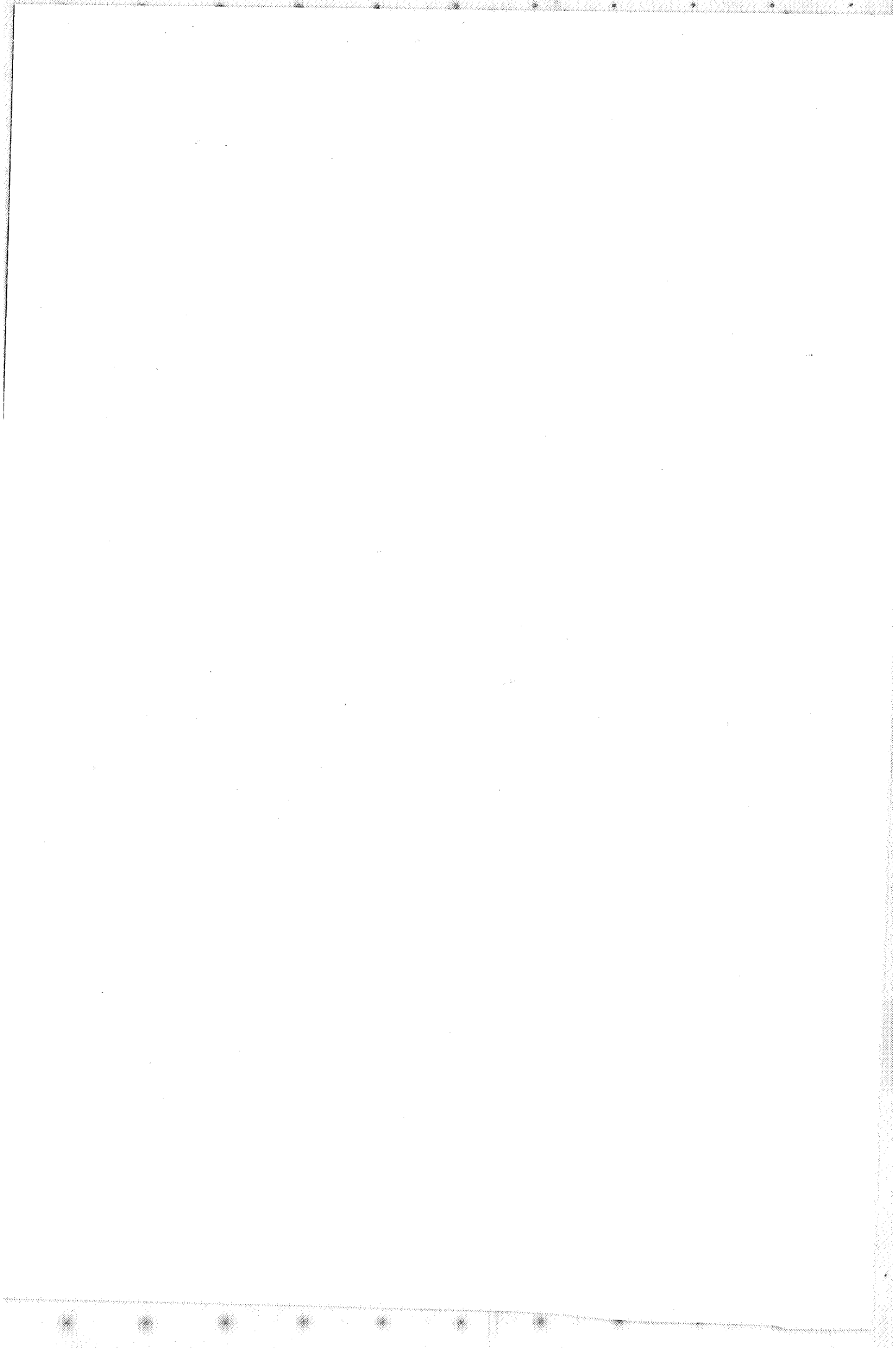
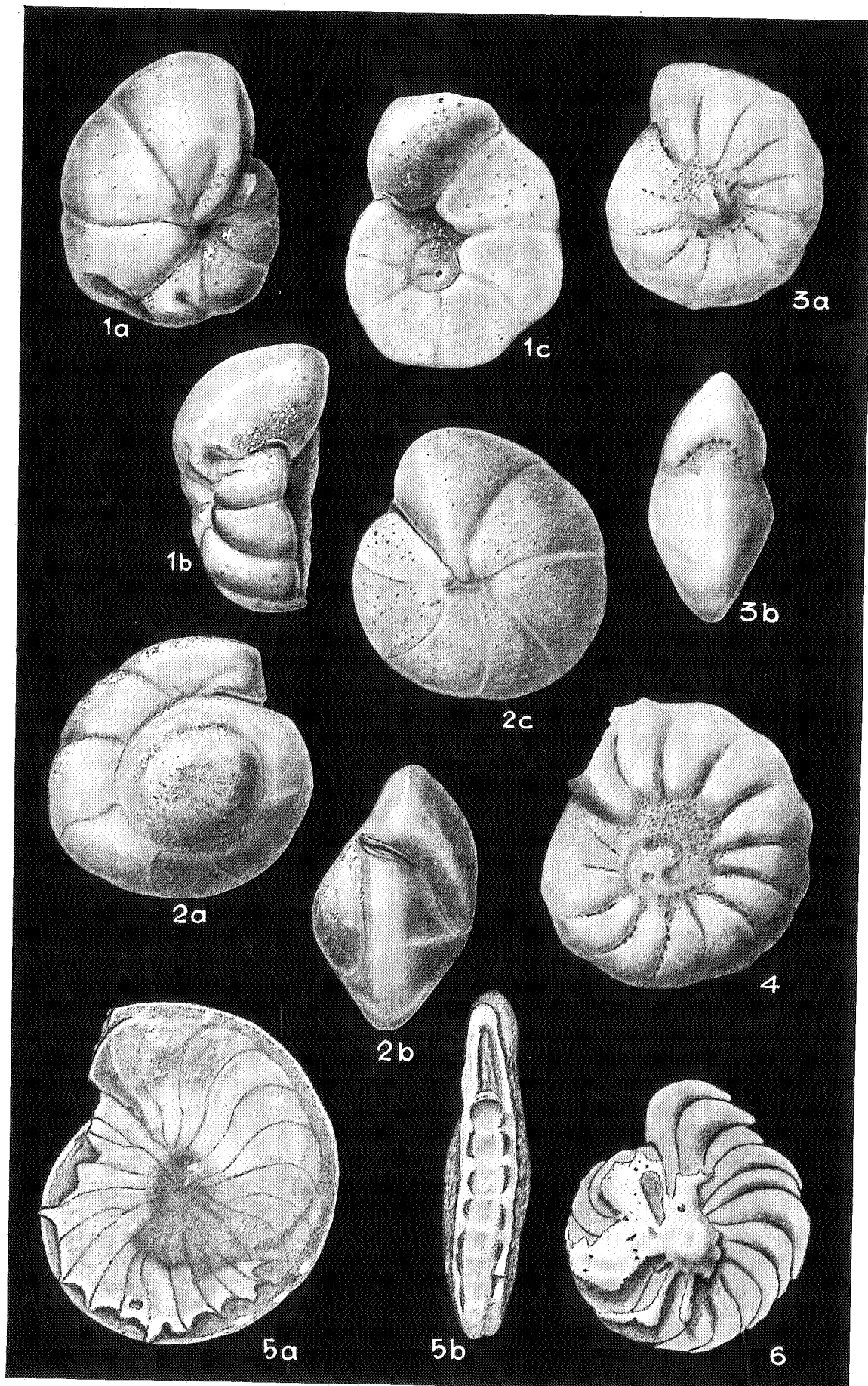


PLATE 5

EXPLANATION OF PLATE 5.

- FIG. 1. — *Cibicides lobatulus* (WALKER & JACOB). a. ventral view, b. apertural view, c. dorsal view. Kallo 127 m., $\times 60$.
- FIG. 2. — *Cibicides pygmaeus* (HANTKEN). a. dorsal view, b. apertural view, c. ventral view. Kallo 127 m., $\times 60$.
- FIG. 3, 4. — *Cribrononion subnodosum* (ROEMER). 3 a, 4. side views, 3 b. apertural view. Kallo 125.50 (fig. 4) and 127 m. (fig. 3), $\times 45$.
- FIG. 5, 6. — *Nummulites* sp. 5 a, 6. side views, 5 b. peripheral view. Kallo 178 m., Asse Clay (fig. 5), and 127 m. (fig. 6), $\times 15$.
-

PLATE 5



C. W. DROOGER. — Microfauna close to the Eocene-Oligocene boundary in the boring at Kallo, near Antwerp.



III. — CALCAREOUS NANNOPLANKTON FROM THE KALLO WELL

BY

E. MARTINI

19 samples from the Kallo well between -82.70 m. and -174.00 m. have been studied for calcareous nannoplankton. Unfortunately only 4 samples contained calcareous nannoplankton, of which the following fossil-lists and age determinations are given.

Kallo well : — 82,70 m.

<i>Coccolithus pelagicus</i> (WALLICH)	r
<i>Cyclococcolithus</i> sp.	r
<i>Dictyococcites dictyodus</i> (DEFLANDRE and FERT)	r
<i>Discolithina</i> cf. <i>distincta</i> (BRAMLETTE and SULLIVAN)	r
<i>Reticulofenestra insignita</i> ROTH and HAY	f
<i>Zygrhablithus bijugatus</i> DEFLANDRE	r

= Lower to Middle Oligocene (placement within a nannoplankton zone impossible because lack of index-species).

Kallo well : — 85,90 m.

<i>Coccolithus</i> sp.	r
<i>Cyclococcolithus luminis</i> SULLIVAN	r
<i>Cyclococcolithus</i> sp. I	f
<i>Cyclococcolithus</i> sp. II	r
<i>Dictyococcites dictyodus</i> (DEFLANDRE and FERT)	c
<i>Isthmolithus recurvus</i> DEFLANDRE	f/c
<i>Reticulofenestra insignita</i> ROTH and HAY	c
<i>Reticulofenestra umbilica</i> (LEVIN)	r
<i>Sphenolithus pacificus</i> MARTINI	r
<i>Zygrhablithus bijugatus</i> (DEFLANDRE)	r

and reworked species from the Maastrichtian .

= *Cyclococcolithus margaritae* zone (?) (Lower Oligocene).

(r=rare, f=few, c=common).

Kallo well : — 124,60 m.

<i>Coccolithus pelagicus</i> (WALLICH)	f
<i>Cyclococcolithus</i> sp.	r
<i>Discolithina pulcheroides</i> (SULLIVAN)	r
<i>Ellipsolithus subdistichus</i> ROTH and HAY	r
<i>Isthmolithus recurvus</i> DEFLANDRE	r
<i>Reticulofenestra umbilica</i> (LEVIN)	r
<i>Rhabdosphaera tenuis</i> BRAMLETTE and SULLIVAN	r

and some rare species reworked from the Upper Eocene like :

Cyclococcolithus reticulatus GARTNER and SMITH,
Helicosphaera seminulum lophota BRAMLETTE and SULLIVAN,
Zycolithus aff. minutus PERCH-NIELSEN

= *Ellipsolithus subdistichus* zone (Lower Oligocene).

Kallo well : — 174,00 m.

<i>Chiphragmalithus alatus</i> (MARTINI)	r
<i>Coccolithus pelagicus</i> (WALLICH)	c
<i>Coccolithus grandis</i> BRAMLETTE and RIEDEL	r
<i>Coccolithus solitus</i> BRAMLETTE and SULLIVAN	r
<i>Cyclococcolithus formosus</i> KAMPTNER	c
<i>Discoaster barbadiensis</i> TAN SIN HOK	r
<i>Discoaster binodosus</i> MARTINI	r
<i>Discoaster distinctus</i> MARTINI	c
<i>Discoaster martinii</i> STRADNER	r
<i>Discolithina distincta</i> (BRAMLETTE and SULLIVAN)	r
<i>Discolithina pulchra</i> (DEFLANDRE)	r
<i>Discolithina pulcheroides</i> (SULLIVAN)	c
<i>Helicosphaera seminulum lophota</i> BRAMLETTE and SULLIVAN	r
<i>Reticulofenestra umbilica</i> (LEVIN)	f
<i>Rhabdosphaera cf. tenuis</i> BRAMLETTE and SULLIVAN	r
<i>Zycolithus dubius</i> DEFLANDRE	r

and reworked species from the Maastrichtian and Danian

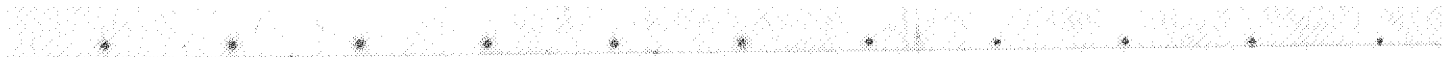
= *Chiphragmalithus alatus* zone (Middle Eocene).

(r=rare, f=few, c=common).

The calcareous nannoplankton assemblages found show similarities to those of some well known localities. The assemblage at -174.00 m. is comparable with that of the type Wemmelian and the Clay of Asse. The assemblage at -124.60 m. can be correlated approximately with that found at the type Grimmeringen, but contains some reworked species from the Upper Eocene (*Discoaster tani nodifer* zone). The assemblage at -85.90 m. is comparable best with that found in some samples from the Sands and Marls of Oude Biezen (=Vieux-Jones) at Galgenberg near Tongeren.

REFERENCES

- MARTINI E., 1969, Nannoplankton aus dem Latdorf (loc. typ.) und weltweite Parallelisierungen in oberen Eozän und unteren Oligozän. (*Senck. leth.*, 50, Frankfurt am Main.)
- MARTINI E. und RITZKOWSKI, 1968, Was ist das « Unter-Oligocän » ? Eine Analyse der BEYRICH'schen und V. KOENEN'schen Fassung der Stufe mit Hilfe des fossilen Nannoplanktons. (*Nachr. Akad. Wiss. Göttingen, II. Math-phys-Kl.*, 1968 [13].)
-



[The main body of the page contains extremely faint and illegible text, likely bleed-through from the reverse side of the paper.]



**MÉMOIRES POUR SERVIR À L'EXPLICATION
DES CARTES GÉOLOGIQUES ET MINIÈRES DE LA BELGIQUE.**

- N° 1. — J.-M. GRAULICH. La faille eifélienne et le Massif de Herve. Ses relations avec le bassin houiller de Liège, 1955, 31 p., 4 pl. — **Prix : 150 F.**
- N° 2. — J.-M. GRAULICH. Le sondage de Wépion, 1961, 102 p., 9 pl. — **Prix : 300 F.**
- N° 3. — J.-M. GRAULICH et J.-L. KOENIGSFELD. Étude géomagnétique de la partie méridionale du Massif devillien de Grand-Halleux (Massif de Stavelot), 1962, 72 p., 3 pl. — **Prix : 150 F.**
- N° 4. — F. CORIN. Atlas des roches éruptives de Belgique, 1965, 190 p., 21+III pl. — **Prix : 300 F.**
- N° 5. — J. BOUCKAERT and W. ZIEGLER. Conodont stratigraphy of the Famennian stage (Upper Devonian in Belgium) with a study on petrography by J. Thorez, 1965, 62 p., 10 pl. — **Prix : 200 F.**
- N° 6. — R. LEGRAND. Ronquières. Documents géologiques, 1967, 60 p., 4 pl. — **Prix : 200 F.**
- N° 7. — J. BOUCKAERT. Carte des mines du bassin houiller de la Basse-Sambre. Notice pédologique par J. Remy, 1967, 56 p., 4 pl. — **Prix : 300 F.**
- N° 8. — R. PAEPE and R. VANHOORNE. The Stratigraphy and Palaeobotany of the Late Pleistocene in Belgium, 1967, 96 p., 14 pl. — **Prix : 300 F.**
- N° 9. — R. LEGRAND. Le Massif du Brabant, 1968, 148 p., 5 pl. — **Prix : 400 F.**
- N° 10. — A. C. HIGGINS and J. BOUCKAERT. Conodont stratigraphy and palaeontology of the Namurian of Belgium, 1968, 64 p., 6 pl. — **Prix : 100 F.**