

SPIDERS FROM THE GALAPAGOS ISLANDS*

11. Mimetidae

by L.L. BAERT** and J.-P. MAELFAIT***

Abstract

Ero gemelosi sp. n. (Araneae, Mimetidae) is described from the Galápagos Islands. It is the first time that a Mimetid spider is cited from this archipelago.

In 1982 we undertook an expedition to the Galápagos Islands with the purpose of studying their spider fauna. In a first paper (BAERT and MAELFAIT, 1983) we described the Mysmenid fauna of the islands. In this paper we describe a species belonging to the Mimetidae.

FAM. Mimetidae

Ero C.L. KOCH, 1837

Ero gemelosi sp. n.

Material examined: 2 ♀♀, place known as « Los Gemelos », Isla Santa Cruz, altitude of 580 m, in grassy vegetation (height of about 60 cm), along the road leading from Puerto Ayora to embarkment site at Canal de Itabaca amid *Scaevola*-wood, 13 March 1982 (L. BAERT and J.-P. MAELFAIT leg.).

The ♀ holotype and ♀ paratype are at the « Koninklijk Belgisch Instituut voor Natuurwetenschappen ».

* Accepted for publication: 8 February 1984.

** Koninklijk Belgisch Instituut voor Natuurwetenschappen, Vautierstraat 29, 1040 Brussel.

*** Laboratorium voor Oecologie der Dieren, Zoögeografie en Natuurbehoud, R.U.G., K.L. Ledeganckstraat 35, 9000 Gent.

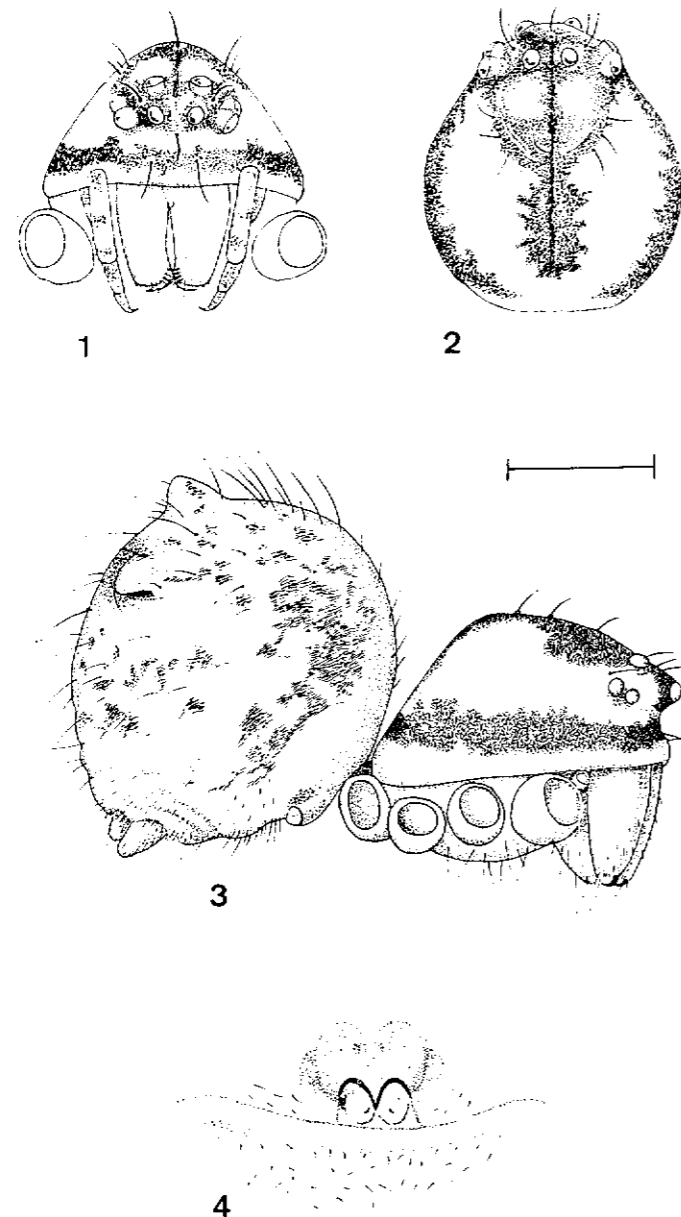


FIG. 1-4. — *Ero gemelosi* sp. n. :
1-3. Carapace, frontal, dorsal and lateral view ; 4. Epigynum (Scale 0.5 mm)

Description : (♀, ♂ unknown).

Colour : Carapace yellowish with dorsal dusky pattern, bordered with broad black margin ; all eyes bordered with rusty ring ; abdomen yellowish, speckled with small black rusty spots ; legs yellowish and annulated.

Carapace (Fig. 1-3) : Longer than broad, highest point at 2/5th of its length (posterior half) ; clypeus concave and shorter than width of eye-area (4/9th of width) ; eyes nearly equal ; AM-eyes strongly overhanging clypeus, equidistant, separated by nearly the radius of an AM-eye, L's on shallow elevation, nearly touching ; PM-eyes further apart from the PL-eyes (two and a quarter of PM radius) than from each other (one and a half of PM radius) ; anterior eye-row procurved, posterior eye-row slightly procurved.

Chelicerae : Length corresponding to 0.7 of carapace height ; anterior inner margin with four distal spineous teeth, slightly separated from two nearly contiguous spineous teeth ; more proximally along inner margin with one strong spine.

Sternum : Heartshaped, fringed with a few spines, pointed behind.

Labium : Triangular, nearly as long as the convergent gnathocoxae, slightly longer than broad.

Abdomen (Fig. 3) : With four tubercles.

Epigynum (Fig. 4) : Two oval-shaped orifices separated by a narrow sclerified triangular septum ; spermathecae visible.

Measurements : Carapace : length : 0.95 mm, width : 0.86 mm, height : 0.42 mm, total body length : 2.09 mm.

Approximate legs measurements (in mm) :

	Fe	Pa	Ti	Mt	Ta	Total
I	1.57	0.49	1.50	1.08	0.75	5.39
II	1.36	0.45	1.12	0.84	0.71	4.48
III	0.92	0.32	0.62	0.52	0.60	2.98
IV	1.29	0.39	0.88	0.65	0.67	3.88

Discussion : This is the first record of a Mimetid spider from the Galápagos Islands. The general features of this species clearly indicate that it belongs to the genus *Ero* C.L. KOCH, 1837. The

epigynum is clearly distinguishable from those of all the *Ero* species known of the Neotropical region, but looks much like the one of the Palearctic species *E. aphaea* (WALCKENAER, 1802).

Acknowledgements

This expedition was made possible through the financial support of (1) The Ministry of National Education of Belgium, (2) The National Foundation for Scientific Research (N.F.W.O.) and (3) The Léopold III Foundation. We also wish to thank Mrs K. de Pierpont-Bouckaert, who made the final drawings.

References

- ARCHER A.F., 1941. — Alabama spiders of the Family Mimetidae. *Pap. Mich. Acad. Sc.* 27 : 183-193.
- BAERT L. and J.-P. MAELFAIT, 1983. — Spiders of the Galápagos Islands. I. Mysmenidae (Araneae). *Bull. Br. arachnol. Soc.* 6 (3) : 102-108.
- KEYSERLING E., 1886. — *Die Spinnen Amerikas*. Band II : Theridiidae : 1-295. T. 1-21.
- KEYSERLING E., 1891. — *Die Spinnen Amerikas*. Band III (Brazilianische Spinnen) : 1-278. T. 1-10.
- MELLO-LEITAO M.D., 1929. — Mimetidos do Brasil. *Rev. Mus. Paulista* 16 : 539-568. T. 1-8.
- SIMON E., 1904. — Etude sur les Arachnides du Chili. *Annl. Soc. ent. Belg.* 48 : 83-114.

Erratum

Volume 119, 1983, page 239 : Tableau I, 2^{me} ligne, lire Hyménoptères 9,6 % au lieu de 6,9 % .