

CHAPTER XIV

CULTURAL AND CHRONOLOGICAL ATTRIBUTION OF THE OBJECTS OF MAMMOTH IVORY FROM SPY CAVE: A LOOK FROM EASTERN EUROPE

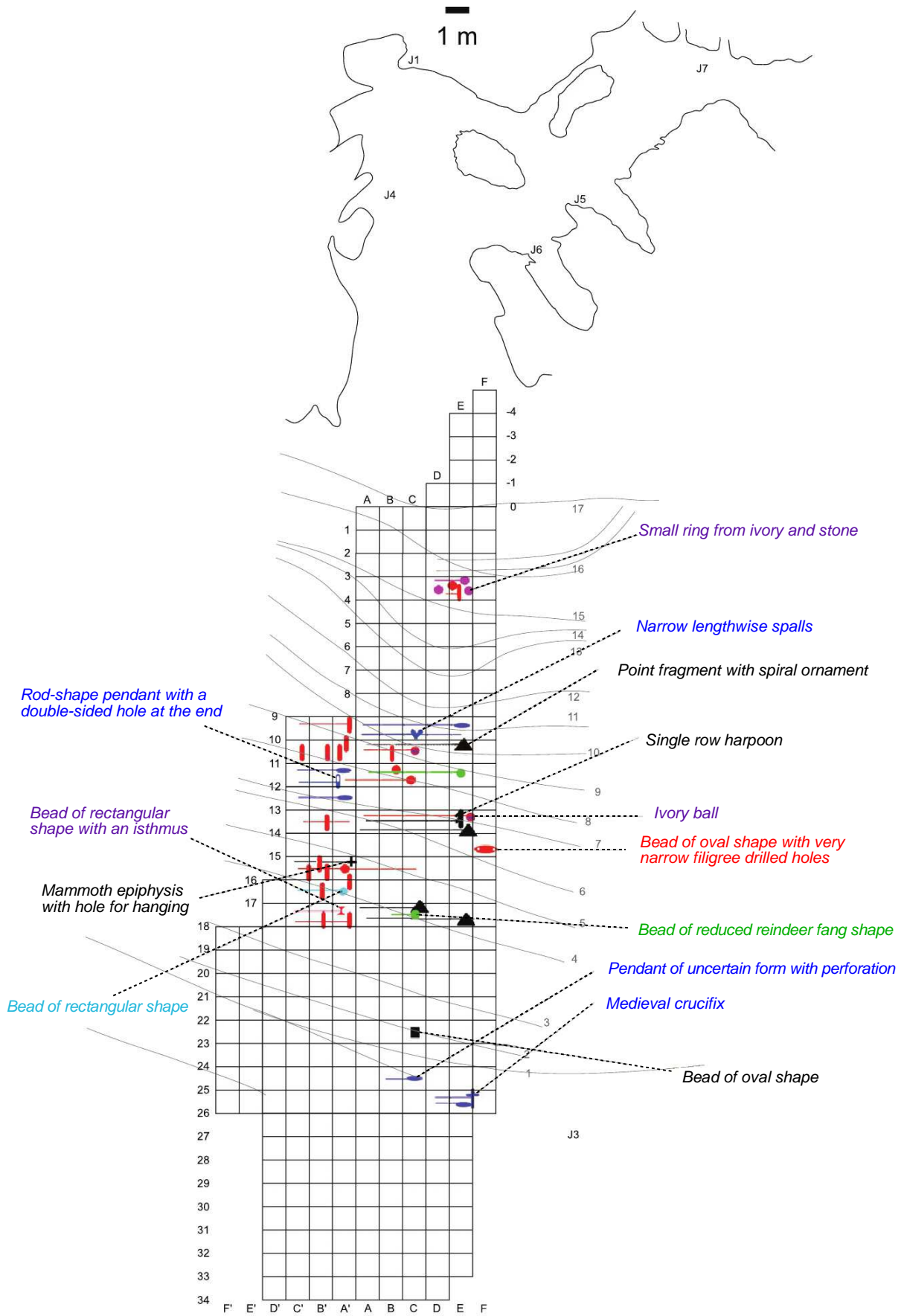
Supporting Information

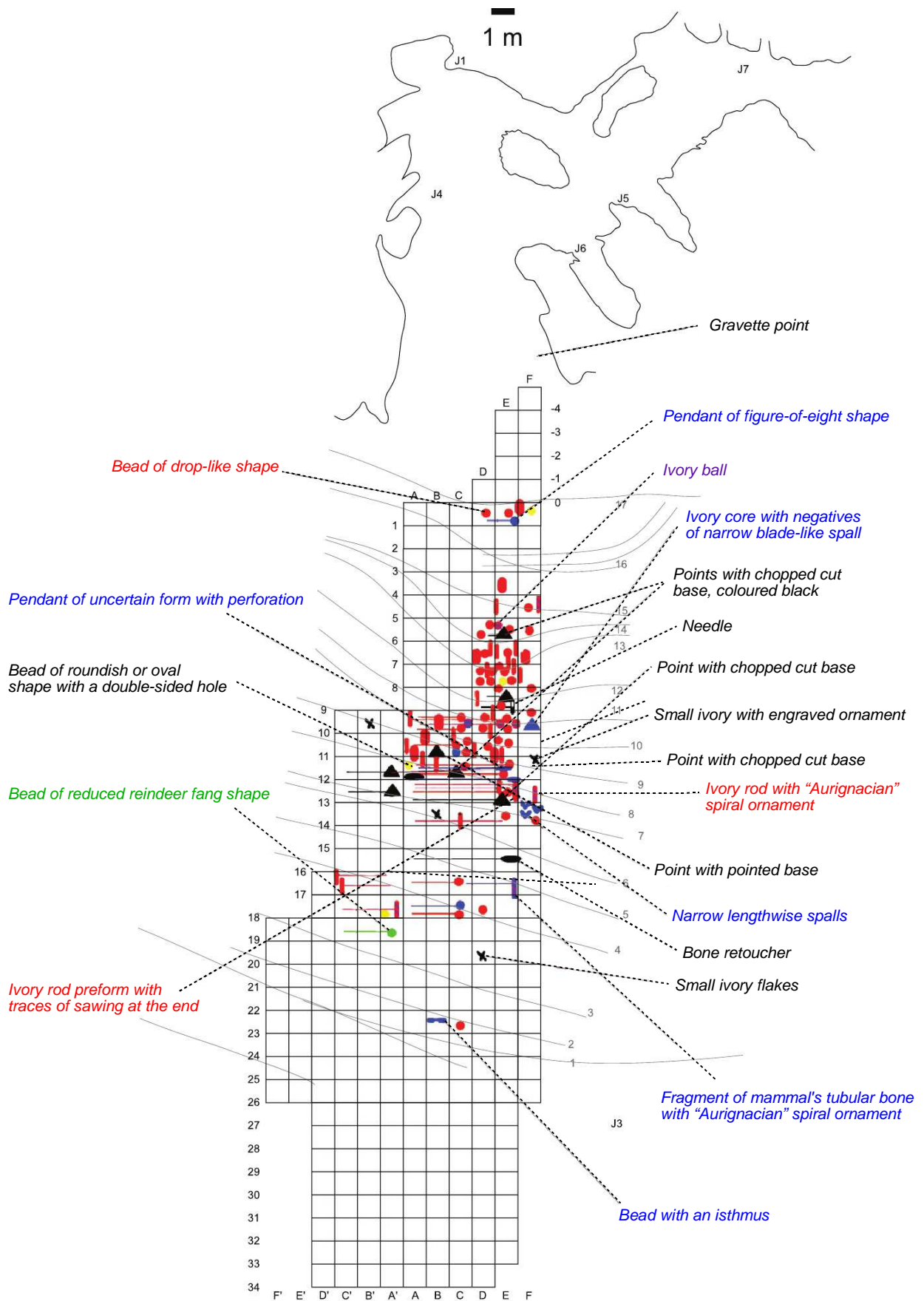
Gennady A. KHLOPACHEV

SF1. Spy cave. Spatial distribution of bone artefacts from the upper and lower layers of the slope between Spy cave terrace and the Orneau river

Legend:

- 📍 - needle
- ▲ - points
- - ivory ball
- ✚ - medieval crucifix
- 🔪 - bone retouchers
- 🦏 - single row harpoon
- - bead of oval shape
- 📏 - rod of small diameter
- ∨ - narrow lengthwise spalls
- ✕ - small ivory flakes
- - beads with an isthmus
- - pendants of uncertain form with perforation
- - beads, preforms and “ébauche” of drop-like shape
- - small ring from ivory and stone
- - beads of reduced reindeer fang shape
- - rod of big diameter
- 📏 - ivory rod with “Aurignacian” spiral ornament
- 📏 - big rod with traces of sawing
- 📏 - rod-shape pendant with a double-sided hole at the end
- ✚ - mammoth epiphysis with hole for hanging
- ✚ - bead of rectangular shape with an isthmus
- - beads of rectangular shape
- 📏 - bead of oval shape with very narrow filigree drilled holes
- - pendants of figure-of-eight shape
- - bead of roundish or oval shape with a double-side hole
- 📏 - fragment of mammal's tubular bone with “Aurignacian” spiral ornament
- ▲ - ivory core with negatives of narrow blade-like spall





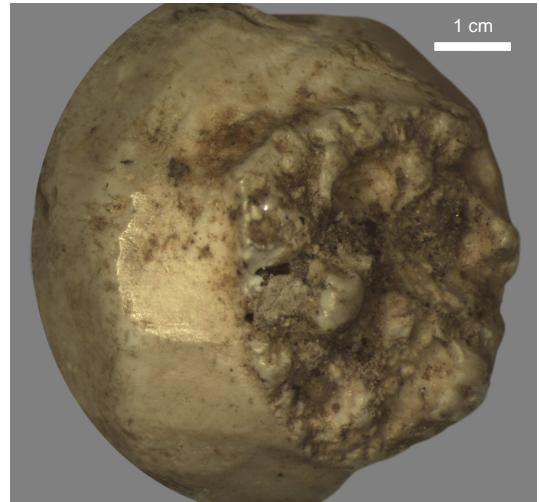
SF2. Spy cave (Aurignacian). Example of a bead of drop-like shape



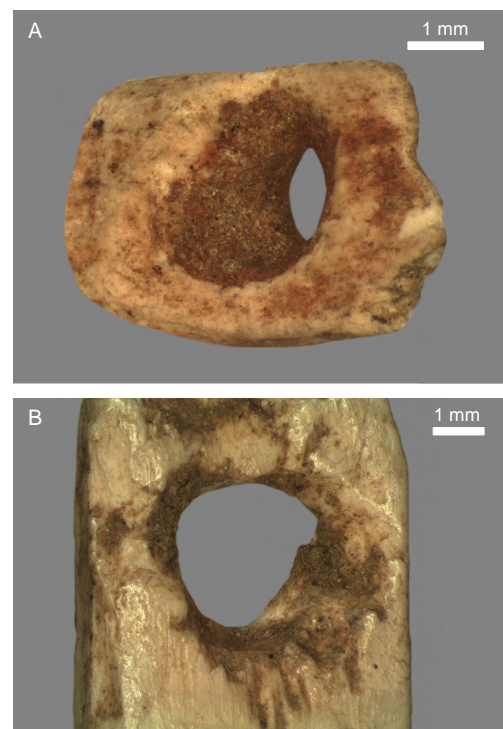
SF3. *Spy cave (Aurignacian).*
Uncompleted bead of drop-like shape (A)
with a flattened end (B)



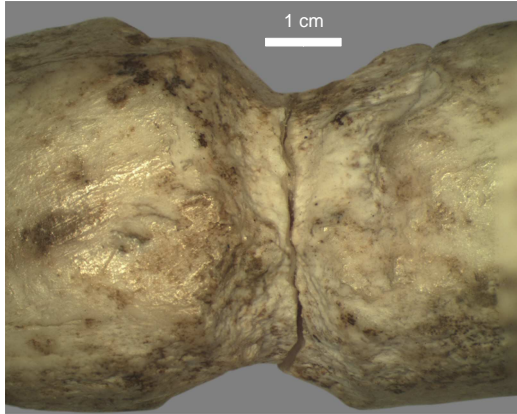
SF4. *Spy cave (Aurignacian).*
Uncompleted bead of drop-like shape
with traces of planing by shaving



SF5. *Spy cave (Aurignacian).*
Bead of drop-like shape (A);
The expansion hole on the flattened end (B)



SF6. *Spy cave (Aurignacian?).*
An isthmus on the bead of ellipsoid shape
(see Figure 7)



AUTHOR'S AFFILIATION

Gennady A. KHLOPACHEV
Peter the Great Museum of Anthropology
and Ethnography (Kunstkamera)
Russian Academy of Sciences
3 University Emb.
St.-Petersburg, 199034
Russia
gak@kunstkamera.ru