

PRIONINAE ⁽¹⁾
(COLEOPTERA CERAMBYCIDAE)

BY

E. FORREST GILMOUR (Doncaster)

The scientific explorations during 1952-1953, 1955 and 1957 to areas in the North of the Parc National Albert, Congo, covered parts of the Ruwenzori Massif, and 47 specimens of *Cerambycidae Prioninae* are in the collection dealt with herein. These belong to five species, four of which are only represented by a single specimen each.

A list is given at the end of the paper of the localities in which the specimens were collected, along with a map of the area concerned.

I have to thank Professor V. VAN STRAELEN, President of the « Institut des Parcs Nationaux du Congo et du Ruanda-Urundi », for allowing me to examine this material. Also I have to thank Mr. J. R. LIDSTER, of the Museum and Art Gallery, Doncaster, for the excellent photographs both in this paper and most of mine over the last few years.

All specimen localities are Congo, Parc National Albert, Ruwenzori Massif.

Tribe **MACROTOMINI.**

Subtribe **STENODONTINA.**

Stenodontes (Mallodon) downesi HOPE.

A single specimen of this species, probably the commonest of the African *Prioninae*, is present in the collection.

Length : 43 mm. Breadth : 14 mm.

1 ♀ : Kalonge, 2.060 m, Katauleko, affl. Butahu, 13.VI.1953 (P. VANSCHUYTBROECK, 4195-4196).

(1) Manuscript deposited on January, 29, 1960.

Subtribe **MACROTOMINA.****Eudianodes swanzyi** PASCOE.

(Plate 1, fig. 1, ♂.)

An interesting record for this fairly rare species. Two species are known in the genus, *E. swanzyi* PASCOE, generally considered to be of Western distribution from West Africa to the Congo, and *E. nonfriedi* LAMEERE, previously considered to be an East African species. Examination of other collections recently has shown that the distribution of *E. nonfriedi* extends well into the Congo, and these localities will be recorded elsewhere in due course.

Length : 20,5 mm. Breadth : 6 mm.

1 ♂ : mont Mulungu, 2.200 m, rive g. riv. Lume, 19.XI.1957 (P. VANSCHUYTBROECK, U. S., 233).

Macrotoma (s. str.) **palmata** FABRICIUS.

(Plate 1, fig. 2, ♀.)

This common African Prionid is represented in the collection by a single specimen.

Length : 54 mm. Breadth : 15,5 mm.

1 ♀ : Bumali, 1.780 m, riv. Butahu, 5.IX.1957 (P. VANSCHUYTBROECK, 1386).

Tribe **PRIONINI.**Subtribe **NOTOPHYSINA.****Notophysis johnstoni** LAMEERE.

(Plate 1, fig. 4, ♂; 5, ♀.)

A fine series of 43 specimens is represented in the collection. This species is of fairly local distribution, apparently being confined to the Ruwenzori Massif and closely adjacent areas in the Congo and Uganda.

In line with previous specimens of the species which I have seen, males greatly outnumber females, there being 33 males to 10 females in the collection. This is an even higher ratio of males to females than I have seen before.

Length : 32,5-54 mm. Breadth : 9,5-18,5 mm.

2 ♂ : Kalonge, 2.130 m, Klondo, affl. Butahu, 2-3.VIII.1952 (P. VANSCHUYTBROECK et J. KEKENBOSCH, 636-637); 1 ♂ : idem, 29.VIII.1952 (886); 1 ♀ : idem, 28.VIII.1952 (892); 1 ♂ : Kalonge, 2.180 m, riv. Katauleko, affl. Butahu, 26-29.VII.1952 (P. VANSCHUYTBROECK

et J. KEKENBOSCH, 581-586); 1 ♂ : Vikote (lieu-dit), contreforts Ruwenzori, 3.400 m, 17.IV.1957 (P. VANSCHUYTBROECK, V.S. 1000); 3 ♂, 1 ♀ : Kalonge, 2.080 m, gîte Ruwenzori, 24.IX-4.X.1952 (P. VANSCHUYTBROECK et J. KEKENBOSCH, 1082); 1 ♀ : idem, 25-26.IX.1952 (1101-1106); 3 ♂ : Muhengeretere (lieu-dit), rive dr. Ruanoli, ± 3.700 m, 18.IV.1957 (P. VANSCHUYTBROECK, V.S. 8); 1 ♂ : Buongo, 2.240 m, crête sép. Nyamwamba de Butahu, 2.X.1952 (P. VANSCHUYTBROECK et J. KEKENBOSCH, 1076); 3 ♂ : camp Kilindere, 2.700 m, riv. Ruanoli (rive g.), 10. VII.1957 (P. VANSCHUYTBROECK, V.S. 118); 1 ♂ : piste Kalonge, 1.700 m, camp des Gardes, 23.VIII.1953 (P. VANSCHUYTBROECK et J. KEKENBOSCH, 963); 8 ♂ : Kalonge, 2.210 m, fougères, 25-27.VII.1952 (P. VANSCHUYTBROECK et J. KEKENBOSCH, 571-573); 1 ♂ : 3-5.VII.1952 (P. VANSCHUYTBROECK et J. KEKENBOSCH, 641); 1 ♂ : idem, 25.VIII.1952 (891); 1 ♂ : idem, 1-10.VIII.1952 (727-730); 1 ♂, 1 ♀ : Kalonge, 2.010 m, riv. Kamahoro, affl. dr. Butahu, 19.II.1953 (P. VANSCHUYTBROECK et J. KEKENBOSCH, 2287); 1 ♂ : Kalonge, 1.980 m, riv. Butahu, 27.II.1953 (P. VANSCHUYTBROECK et J. KEKENBOSCH, 2626); 1 ♂ : Kalonge, 2.100 m, riv. Nyamwamba, affl. Butahu, 6.VIII.1952 (P. VANSCHUYTBROECK et J. KEKENBOSCH, 658); 1 ♀ : idem, 1.940 m, 17.VIII.1952 (795); 1 ♂ : mont Vuhonga, contreforts Ruwenzori, vallée Lume, secteur Wasongora, 2.200 m, 22.VIII.1953 (P. VANSCHUYTBROECK, 14325); 1 ♀ : Kasaka, 1.800 m, entre source Buliba et riv. Kamanzekule, affl. Lume, 12.III.1952 (P. VANSCHUYTBROECK et J. KEKENBOSCH, 3157); 1 ♀ : Kalonge, 1.900 m, riv. Kabisembe, affl. Butahu, 28.VIII.1952 (P. VANSCHUYTBROECK et J. KEKENBOSCH, 870); 1 ♂ : Kalonge, 2.180 m, Kikyô, 1.X.1952 (P. VANSCHUYTBROECK et J. KEKENBOSCH, 920); 1 ♀ : Kalonge, 2.120 m, Kandiko, affl. Butahu, 26.VIII.1952 (P. VANSCHUYTBROECK et J. KEKENBOSCH, 854); 1 ♀ : Kalonge, 1.780 m, riv. Bwisonge, affl. Butahu, 29.VIII.1952 (P. VANSCHUYTBROECK et J. KEKENBOSCH, 865); 1 ♀ : Kalonge, 1.900 m, riv. Kamusonge, affl. Butahu, 28.VIII.1952 (P. VANSCHUYTBROECK et J. KEKENBOSCH, 864).

Subtribe **ACANTHOPHORINA.**

Acanthophorus (Tithoes) maculatus FABRICIUS forma **congolanus** LAMEERE.

(Plate 1, fig. 3, ♀.)

A single specimen of this common African Prionid is present in the collection. Widely distributed over tropical Africa, there appears to be no full geographical foundation for LAMEERE's various subspecies of *maculatus* FABRICIUS. I have come to this conclusion after examining several hundred specimens, but the question will be discussed elsewhere in due course.

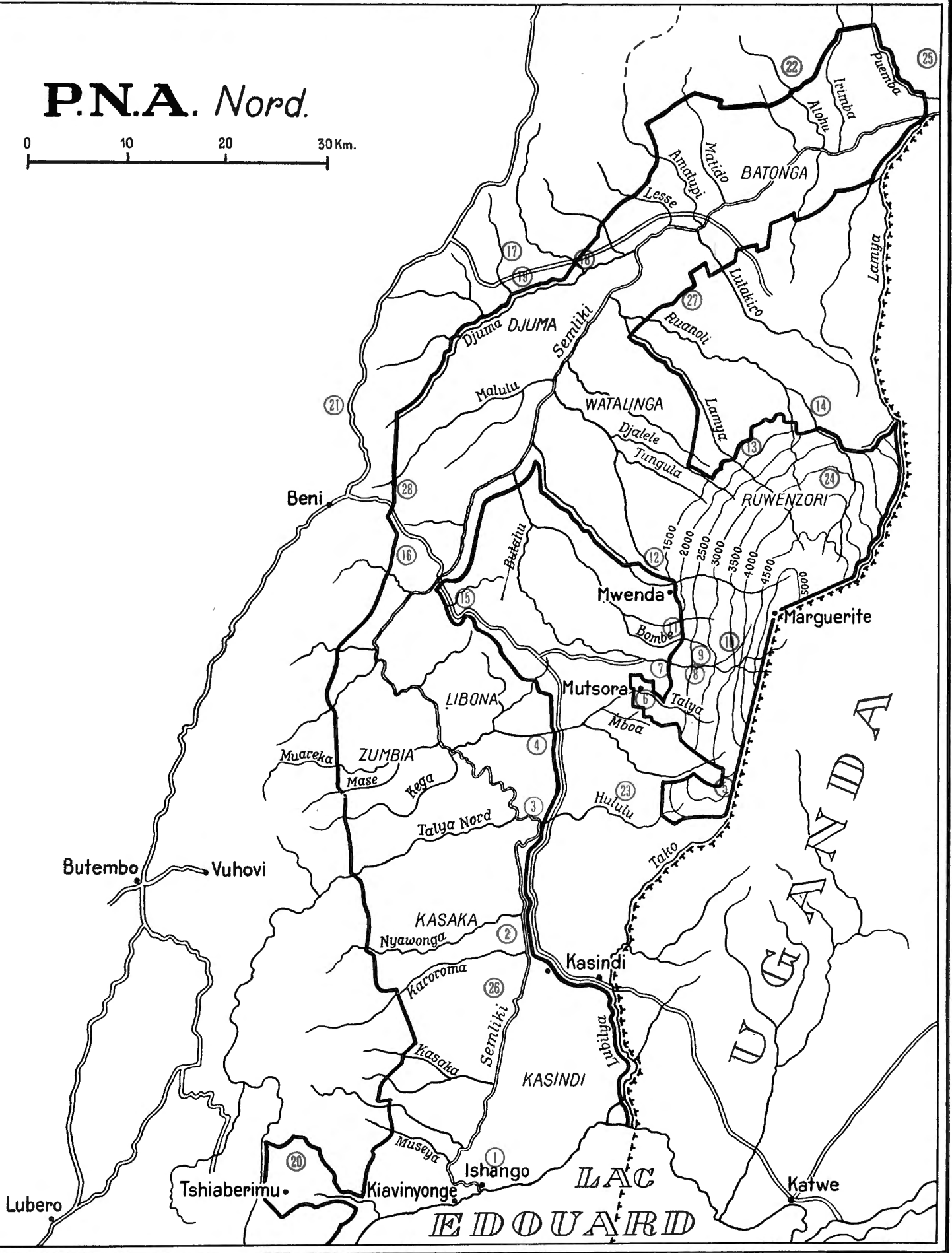
Length : 62 mm. Breadth : 19,5 mm.

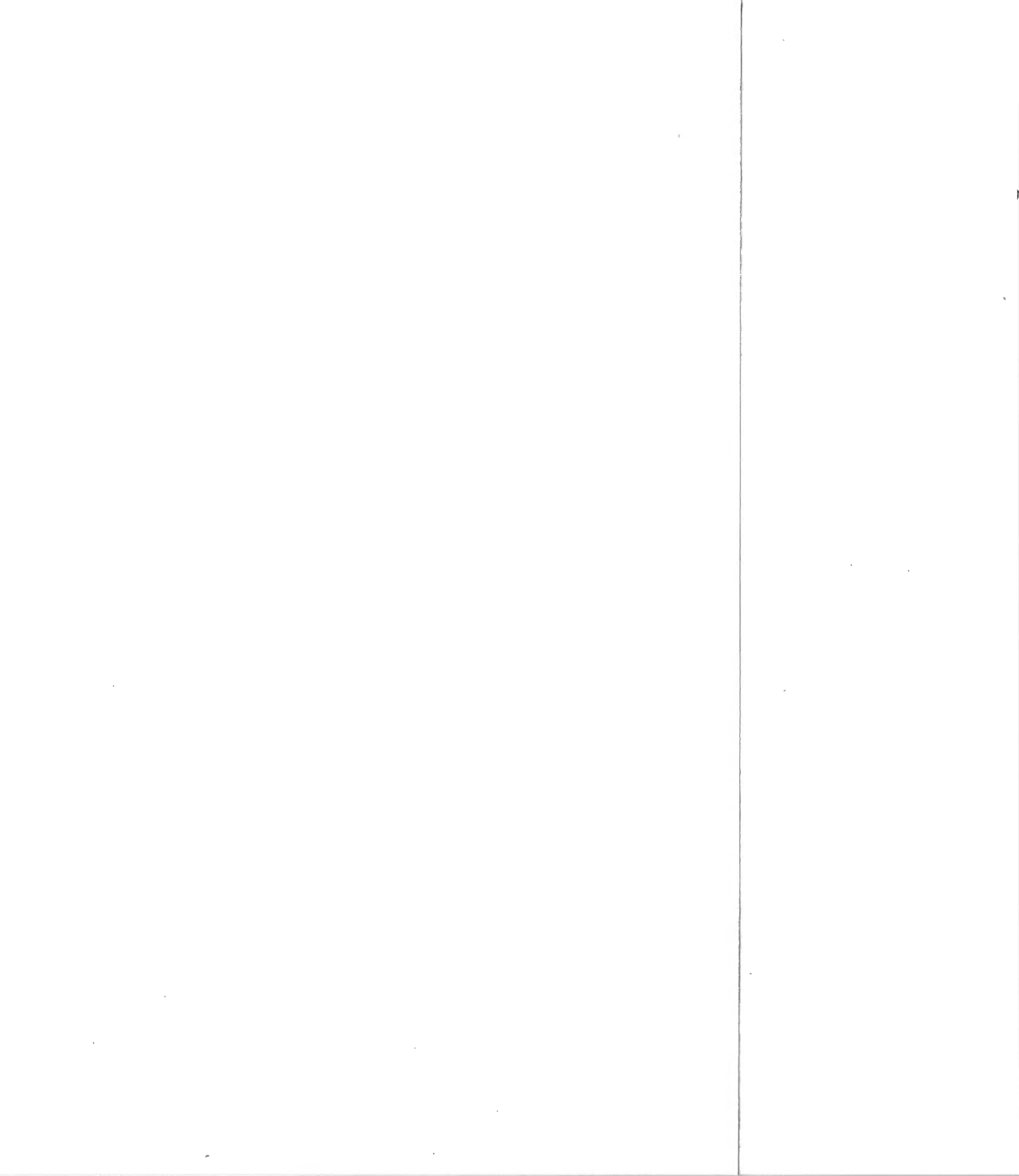
1 ♀ : Kalonge, 2.180 m, riv. Katauleko, affl. Butahu, 30.VII.1952 (P. VANSCHUYTBROECK et J. KEKENBOSCH, 597-599).

LIST OF PLACES OF COLLECTING OF MATERIAL
IN THIS PAPER.

- Buliba : rivière et marais sur la rive droite de la Talya, savane herbeuse (alt. 1.200-1.240 m), P.N.A. Rég. 6.
- Bumali : village près de Mutwanga, savane boisée (alt. 1.300 m). Rég. 6.
- Buongo : lieu-dit, crête séparant le Nyamwamba de la Butahu, bambous, *Hagenia* (alt. 2.240 m). Rég. 9.
- Butahu : rivière, affluent de la Semliki, près de Mutwanga (alt. 1.200 m), près Kalonge (alt. 1.980 m, 840 m à la Semliki), P.N.A. Rég. 6-8.
- Bwisonge : affluent droit de la Butahu, près Kyandolire, savane boisée, fougères (alt. 1.780 m). Rég. 7.
- Kabisembe : affluent droit de la Butahu, près Kalonge, forêt ombrophile (alt. 1.900 m). Rég. 8.
- Kalonge : gîte Ruwenzori, forêt de montagne, quelques bambous (alt. 2.060 m). Rég. 8.
- Kamusonge : affluent droit de la Butahu, près de Kalonge, forêt de montagne (alt. 1.900 m). Rég. 8.
- Kandiko : affluent droit de la rivière Butahu, près Kalonge, forêt de montagne (alt. 2.020 m). Rég. 8.
- Kasaka : lieu-dit entre la source de la Buliba et la rivière Kamanzekule, affluent de la Lume, contreforts du Ruwenzori, secteur Mutsora, savane boisée (alt. 1.800 m). Rég. 5.
- Katauleko : affluent droit de la Butahu, près de Kalonge, forêt ombrophile équatoriale (alt. 2.060 m). Rég. 8.
- Kikyö : lieu-dit près de Kalonge, forêt de montagne (alt. 2.080 m). Rég. 8.
- Kilindere : deux camps, un rive droite, un rive gauche de la rivière Ruanoli, rive gauche à 2.890 m dans les bambous, rive droite entre 2.700 et 2.900 m dans les bambous et fougères. Rég. 24.
- Lume (Haute-) : rivière, affluent droit de la Semliki, route Beni-Katwe, savane, forêt de montagne, bambous, alt. 1.750-2.600 m. Rég. 4.
- Muhengetere : lieu-dit, rive droite de la rivière Ruanoli, alpages (alt. env. 3.700 m). Rég. 24.
- Mulungu : mont, contreforts du Ruwenzori, sur rive gauche de la rivière Lume, *Pennisetum* et bambous (alt. env. 2.600 m). Rég. 23.
- Nyamwamba : affluent droit de la Butahu, près de Kalonge, forêt de montagne, quelques bambous, *Hagenia*, bruyères, étage alpin (*Carex*) (alt. 2.010 à 4.200 m). Rég. 8.
- Vikote : lieu-dit, contreforts du Ruwenzori-Nord, bambous (alt. 3.400 m). Rég. 24.
- Vuhonga : mont, contreforts du Ruwenzori, vallée de la Lume, secteur Wasongora, forêt de montagne (alt. 2.200 m). Rég. 5.
-

P.N.A. Nord.





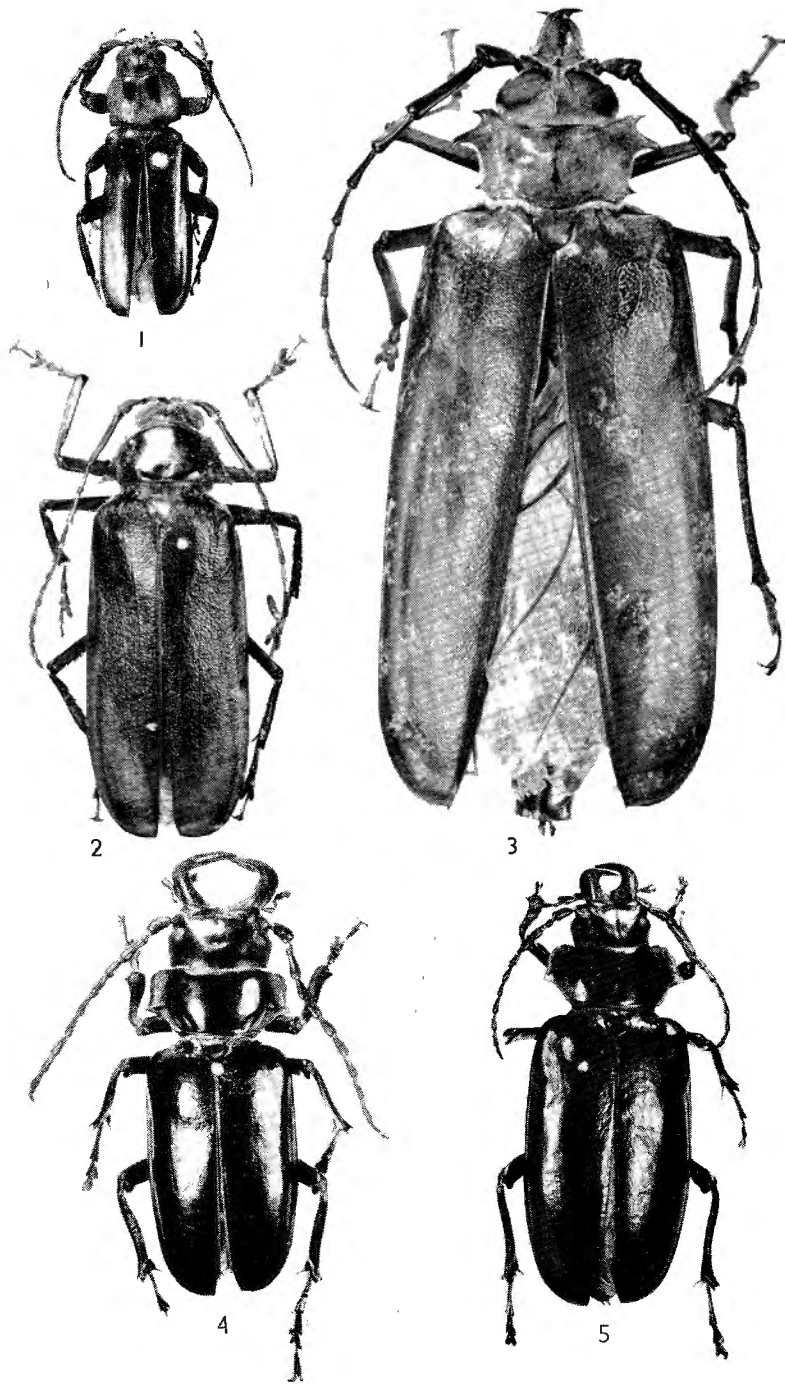
INDEX
ARRANGED ALPHABETICALLY.

	Pages
<i>Acanthophorina</i> (Subtribe)	67
<i>downesi</i> [<i>Stenodontes</i> (<i>Mallodon</i>)]	65
<i>johnstoni</i> (<i>Notophysis</i>)	66
<i>Macrotomina</i> (Subtribe)	65
<i>Macrotomini</i> (Tribe)	66
<i>maculatus</i> forma <i>congolanus</i> [<i>Acanthophorus</i> (<i>Tithoes</i>)]	67
<i>Notophysina</i> (Subtribe)	66
<i>palmata</i> (<i>Macrotoma</i>)	66
<i>Prionini</i> (Tribe)	66
<i>Stenodontina</i> (Subtribe)	65
<i>swanzyi</i> (<i>Eudianodes</i>)	66

Published September 15, 1961.

EXPLANATION OF PLATE.

- FIG. 1. — *Eudianodes swanzyi* PASCOE, ♂.
FIG. 2. — *Macrotoma* (s. str.) *palmata* FABRICIUS, ♂.
FIG. 3. — *Acanthophorus* (*Tithoes*) *maculatus* FABRICIUS, forma *congolanus* LAMEERE, ♀.
FIG. 4. — *Notophysis johnstoni* LAMEERE, ♂.
FIG. 5. — *Idem*, ♀.
-



FIGS. 1-5.

- 1 : *Eudianodes swanzyi* PASCOE, ♂. — 2 : *Macrotoma* (s. str.) *palmata* F., ♀.
 3 : *Acanthophorus* (*Tilhoes*) *maculatus* F. forma *congolanus* LAMEERE, ♀.
 4 : *Notophysis johnstoni* LAMEERE, ♂. — 5 : *Notophysis johnstoni* LAMEERE, ♀.

