

Institut royal des Sciences  
naturelles de Belgique

BULLETIN

Tome XXIX, n° 6.  
Bruxelles, janvier 1953.

Koninklijk Belgisch Instituut  
voor Natuurwetenschappen

MEDEDELINGEN

Deel XXIX, n° 6.  
Brussel, Januari 1953.

---

A NEW SPECIES  
OF THE CICHLID GENUS LIMNOCHROMIS  
OF LAKE TANGANYIKA,

by Ethelwynn TREWAVAS (London).

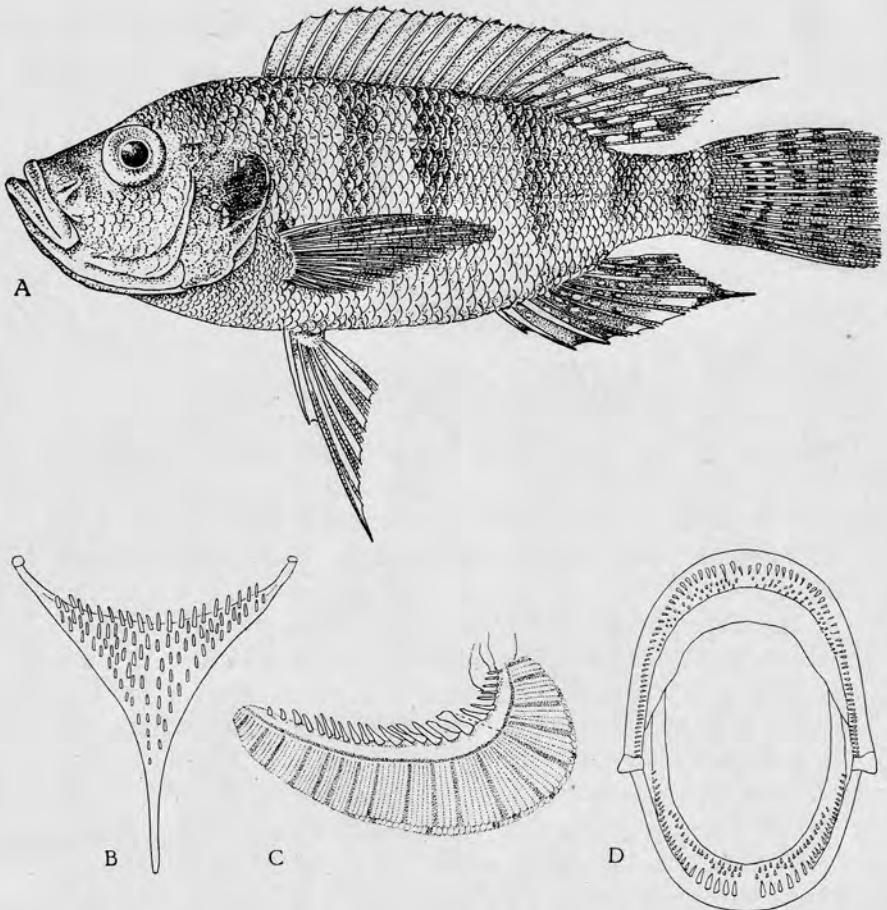
---

*Limnochromis christyi* n. sp.

Depth of body 2,6 - 2,8 in the standard length, length of head 2,5 - 2,7. Snout 1,2 - 1,3 times diameter of eye, which is 3,9 - 4,3 in the length of head. Depth of preorbital 4,7 - 5,1 in the length of head, interorbital width 4,7 - 5,6, length of lower jaw 2,1 - 2,3. Cleft of mouth at an angle of nearly 45° to the horizontal axis of the fish; maxillary extending to below anterior edge of eye. Teeth regular, close-set, curved, in two or three series in upper jaw, two in lower; the outer conical, much larger than the inner, which are compressed, unicuspid; 80 to 84 in outer series of upper jaw. Cheek with 4 or 5 series of scales. Gill-rakers 16 or 17 on lower part of anterior arch. Lower pharyngeal bone rather small, bearing firmly fixed, compressed, pointed teeth with the anterior cusp suppressed or reduced to a shoulder.

Scales 44 to 49 in a longitudinal series, 7 from origin of dorsal to lateral line, the same number between pectoral and pelvic fins.

Dorsal XIV - XV 10; last spine 2,5 - 2,6 in the length of head. Anal III 8; third spine as long as last dorsal. Pectoral as long as head or nearly, extending to above middle of anal fin. Pelvic with first soft ray produced into a filament extending beyond origin of anal. Caudal scaly in proximal half, truncate, with slightly rounded corners. Caudal peduncle 1,2 - 1,4 times as long as deep.



*Limnochromis christyi* sp. n., type ( $\times 4/5$ ).

A — lateral view (left pectoral fin damaged); B — lower pharyngeal bone; C — anterior gill-arch; D — teeth of jaws (enlarged).

Type, ♀, 115 + 27 mm, L. Tanganyika, coll. CHRISTY [B. M. (N. H.) 1950. 4.1.1262].

Paratypes, ♀, 101 + 26 mm; (sex ? - gonad removed) 95 + 22 mm; L. Tanganyika, coll. CHRISTY [B. M. (N. H.) 1950. 4.1.1263-4].

This species appears to be most nearly related to *L. abeelei* POLL (1949) (1), in which, however, the body and caudal peduncle are more slender, the eye is larger ( $3 \frac{1}{8}$  to  $3 \frac{2}{3}$  in the length of head in specimens of 110 to 235 mm total length), the gill-rakers are fewer (14 - 15) and the scales larger (36 or 37 in a longitudinal series) and the caudal fin is slightly emarginate.

This note is published here through the good offices of Dr. Max POLL, who also kindly arranged for Miss M. L. VAN MELLE to make the drawing.

BRITISH MUSEUM (NATURAL HISTORY).

---

AD. GOEMAERE, Imprimeur du Roi, 21, rue de la Limite, Bruxelles