

# Interannual changes in the composition of the macrobenthic fauna of Drana lagoon (Evros Delta, n. Aegean Sea): preliminary note

Theodoros Kevrekidis, Athanasios Mogias and Nestoras Gouvis

Democritus University of Thrace, Department of Education-Primary level,  
68100 Alexandroupoli, Hellas

**ABSTRACT.** The qualitative and quantitative composition of macrobenthic fauna of Drana lagoon, Evros Delta, was investigated during summer of 1981, 1997 and 1998. Since 1987 Drana lagoon has been isolated from the sea due to the obstruction of its narrow opening. In September 1998, samples were collected in an emerged and in a submerged site, since the major part of the lagoon was temporarily drained due to evaporation. An alteration in the faunal composition characterized by the vanishing of marine species and an increase of the dominance of the most resistant estuarine species (*Hydrobia* sp., *Hediste diversicolor*, *Gammarus aequicauda*), was recorded during July 1997 in relation to September 1981. This alteration may be the result of the lagoon's isolation from the sea. Furthermore, this isolation resulted in the temporary drainage of the major part of the lagoon during September 1998, when *Hydrobia* sp. showed a 98% dominance at the submerged site and was the unique species found at the emerged one. Number of species and total density together with biomass had comparatively higher values in September 1981 and in July 1997 samples, respectively. Species diversity and evenness showed significantly lower values in September 1998 samples while evenness had significantly higher values in July 1997 samples.

**KEY WORDS:** Interannual changes, Macrozoobenthos, Lagoon, Aegean Sea.

## INTRODUCTION

Lagoons and estuaries of the Mediterranean have been the subject of extensive studies. However, our knowledge on the temporal changes of the qualitative and quantitative composition of their macrobenthic fauna is very restricted. Some relatively recent publications refer mainly to seasonal variation (e.g. GUELORGET & MICHEL, 1979a; 1979b; REIZOPOULOU et al., 1996; GOUVIS et al., 1997; KEVREKIDIS, 1997; ARVANITIDIS et al., 1999). Changes in the composition of the macrobenthic fauna occurring several years after the first records are of special interest, particularly if an alteration in the hydrological regime of a lagoon has been taken place during this period. It is known that hydrological factors must be responsible for the biological organization of

Mediterranean lagoons rather than hydrochemical or sedimentological ones (FRISONI et al., 1984).

We studied the qualitative and quantitative composition of the macrobenthic fauna in Drana lagoon (Evros delta, N. Aegean Sea) during summer of 1981, 1997 and 1998. Since 1987 Drana lagoon has been isolated from the sea due to the obstruction of its narrow opening.

## MATERIAL AND METHODS

The Evros Delta is located at the NE end of the Aegean Sea (Fig. 1). The Drana lagoon, one of the four lagoons of the delta (Fig. 1), is biologically significant since, among others, a large number of avifauna species inhabits the area. Fresh water occasionally enters the lagoon area mainly from the stream Mikri Maritsa and from drainage channels (Fig. 1). In the past the lagoon communicated with the sea through a narrow opening 4m wide. In order for the Drana lagoon to be drained, its opening was

obstructed in 1987 and since then there has been no direct communication with the sea. However permanent drainage of the lagoon has not occurred until today. In September 1998, due to evaporation, the largest part of

the lagoon was drained for a period of 3 weeks except for a small area (about 1/5 of the lagoon) in the site DA<sub>1</sub> (Fig.1), which remained submerged.

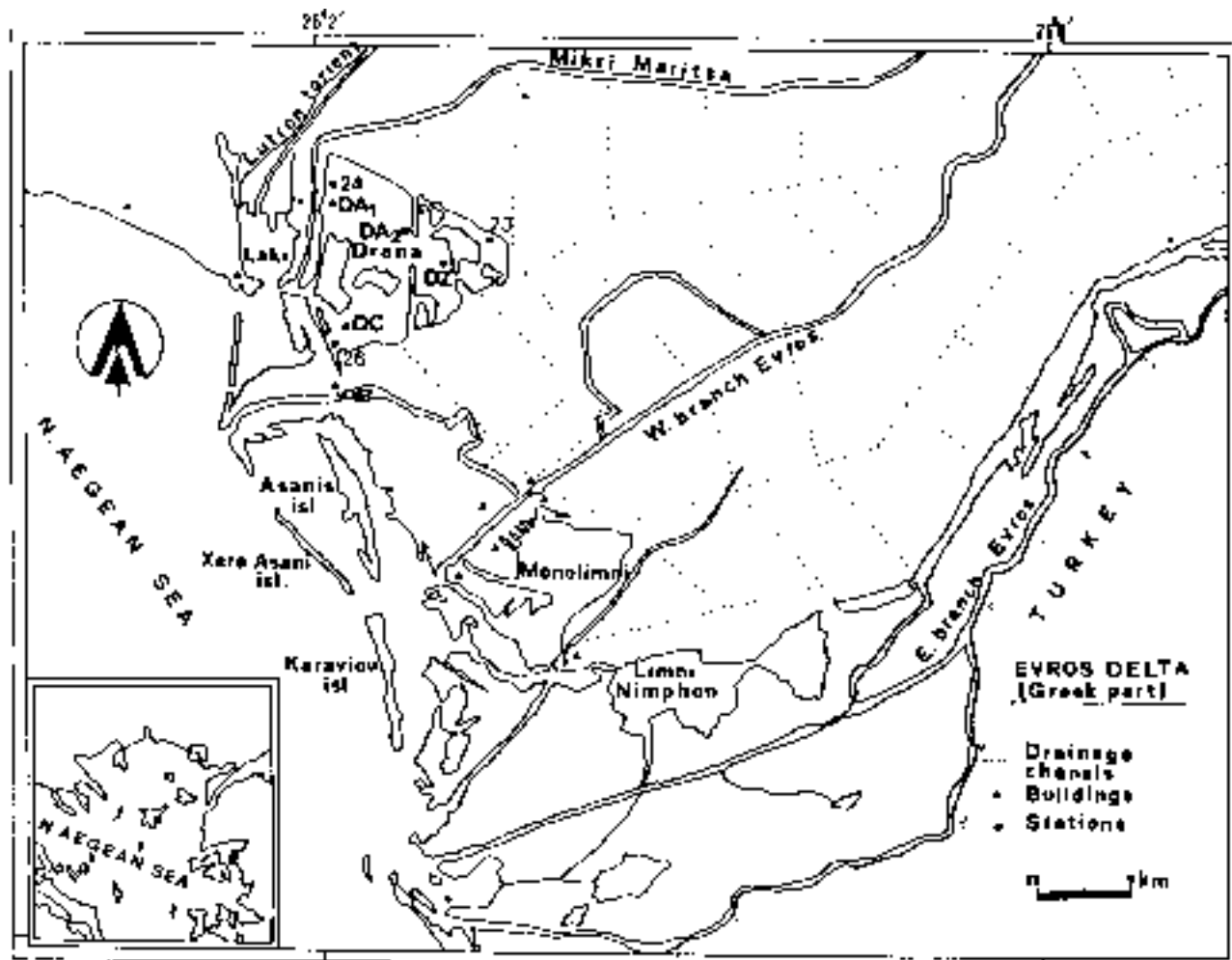


Fig. 1. – Map of Evros Delta showing the sampling stations.

Samples of the macrobenthic fauna were taken from Drana Lagoon at the sites 23, 24 and 26 in September 1981, DA<sub>1</sub>, DA<sub>2</sub>, DC and DZ in July 1997 and DA<sub>1</sub> and DC in September 1998 (Fig.1). Each sample was made up of 4 random replicates at each site in September 1981 and at DA<sub>1</sub> site in September 1998 and of 2 random replicates at each site in July 1997 taken by a modified Van Veen grab; the grab covered a surface of 400 cm<sup>2</sup> (20 cm x 20 cm) and penetrated to a depth of 20 cm. In September 1998, 2 random replicates were taken at the emerged DC site with the use of a corer having a 20 cm diameter and penetrating to a depth of 20 cm. The samples were sieved in the field through a 0.5 mm screen. In each sampling site, depth, salinity and the temperature of the water near the bottom, as well as the temperature of the sediment at a depth of 1 cm were also measured. These water physicochemical parameters were also measured at DA<sub>1</sub> and DC sites in September 1997. All animals were identified, counted and the wet weight was

measured after drying on laboratory tissue. Bivalve and gastropod shells were not included in weight determinations.

In order to determine the similarity among species, cluster analysis was performed on faunal abundance data (R-analysis). The Bray-Curtis similarity coefficient was used on log transformed data [ $x = \ln(x+1)$ ]. Hierarchical clustering of species was achieved using the group-average sorting strategy (Lance and Williams, 1967).

Species diversity (HY') was estimated using Shannon's formula:  $HY' = -\sum_{i=1}^S p_i \log_2 p_i$

Evenness (J) was measured by the formula  $HY' / \log_2 S$ , where S = total number of species. Statistical analyses [one-way analysis of variance, least-significant difference method (L.S.D.)] were performed on log transformed data ( $x = \ln x$ ).

**RESULTS**

The values of the physicochemical parameters in the sampling sites are given in Table 1. The water salinity exceeded 40‰ in September 1981, varied between 14.8‰ and 17.0‰ in July 1997 and between 50.3‰ and 53.7‰ in September 1997 and had a value of 11.2‰ at the submerged site in September 1998.

TABLE 1  
Water and sediment data of sampling sites

Date	Stations	Water		Sediment	
		Depth (cm)	Salinity (‰)	Temp. (°C)	Temp. (°C)
Sept. 1981	23	50	>40.0	22.0	21.7
Sept. 1981	24	15	>40.0	17.0	18.6
Sept. 1981	26	40	>40.0	21.2	20.6
July 1997	DA1	30	15.6	32.7	32.6
July 1997	DA2	55	14.8	30.7	30.0
July 1997	DC	25	15.9	27.2	27.3
July 1997	DZ	40	17.0	29.3	28.0
Sept. 1997	DA1	20	50.3	20.2	-
Sept. 1997	DC	20	53.7	20.0	-
Sept. 1998	DA1	25	11.2	23.3	22.3
Sept. 1998	DC	-	-	-	-

A total of 12 macrobenthic species were collected during the three different sampling periods. The abundance, dominance and wet weight biomass of the species for each sample are given in Table 2.

Hierarchical classification of the species, on the basis of similarity in their distribution in the samples, is shown in a dendrogram (Fig. 2). At the 16.5% similarity level, 3

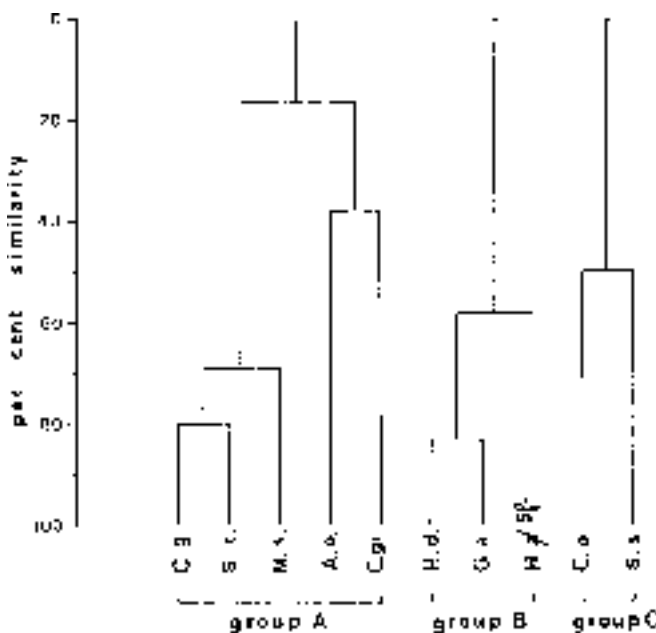


Fig. 2. – Dendrogram of hierarchical classification of species data.

species groups were distinguished: group A, which includes the polychaetes *Capitella giardi* and *Scolelepis tridentata*, the bivalves *Abra ovata* and *Cerastoderma glaucum* and the mysid *Mesopodopsis slabberi*; group B which includes the gastropod *Hydrobia* sp., the polychaete *Hediste diversicolor* and the amphipod *Gammarus aequicauda* and group C, which includes the polychaete *Streblospio shrubsolii* and the amphipod *Corophium orientale*. The polychaete *Spio decoratus* and the decapod *Crangon crangon* were not included in any species group. The number of individuals, dominance and biomass of the species groups in each sampling period (Sept. 1981, July 1997, Sept. 1998) are given in Table 3.

A total of 10 species were collected during September 1981 (Table 2). B species group showed a high mean dominance, A species group had a remarkable mean dominance, while the cumulative mean dominance of *S. decoratus* and *C. crangon* was 0.6% (Table 3). *Hydrobia* sp. having a mean abundance of 270 ind./0.1m<sup>2</sup>, a mean biomass of 128.3 mg/0.1m<sup>2</sup> and a mean dominance of 71%, was the only species of B group found in all samples (Table 2). >From the species of A group, *A. ovata* was found in all samples having a mean abundance of 186.3 ind./0.1m<sup>2</sup>, a mean biomass of 62.0 mg/0.1m<sup>2</sup> and a mean dominance of 21.8% (Table 2). Moreover, *C. giardi* had a remarkable mean abundance of 9 ind./0.1m<sup>2</sup> and mean dominance of 4.5% (Table 2).

Only the three species of B group and one species of C group (*S. shrubsolii*) were found during July 1997 (Table 2). The gastropod *Hydrobia* sp., the sizable polychaete *H. diversicolor* and the amphipod *G. aequicauda* were recorded in all stations, having a mean abundance of 741 ind./0.1m<sup>2</sup>, 126 ind./0.1m<sup>2</sup> and 127 ind./0.1m<sup>2</sup>, a mean biomass of 280.0 mg/0.1m<sup>2</sup>, 2356.0 mg/0.1m<sup>2</sup>, and 327.0 mg/0.1m<sup>2</sup> and a mean dominance of 73.2%, 16.8% and 9.9%, respectively (Table 2). Consequently, B species group had a very high mean dominance (Table 3). *S. shrubsolii* (C species group) was only collected in DC site and had an extremely low mean abundance, mean biomass and mean dominance (Tables 2 and 3).

The above four species, together with *A. ovata* and *C. glaucum* (A species group) and *C. orientale* (C species group), were also found at the site DA<sub>1</sub> in September 1998 having, except *Hydrobia* sp., very low values of abundance and dominance (Table 2). *Hydrobia* sp. had a high abundance, biomass and dominance at this site, while it was the only species found at the emerged site DC (Table 2). B species group had a dominance of 99.5% in site DA<sub>1</sub>, while the corresponding value of both A and C species groups was 0.25% (Table 2).

The major biological parameters (total density, total biomass, number of species, species



TABLE 3

Number of individuals (A, ind./0.1 m<sup>2</sup>), dominance (D, %) and wet weight biomass (B, mg/0.1 m<sup>2</sup>) of species groups, as well as the major biological parameters of the benthic ecosystem in each sampling period (mean values  $\pm$  SE).

		Date	Sept. 1981	July 1997	Sept. 1998
		Sites	23, 24, 26	DA <sub>1</sub> , DA <sub>2</sub> , DC, DZ	DA <sub>1</sub> , DC
<i>S. decoratus</i>	A		1.7 $\pm$ 1.7		
	D		0.4 $\pm$ 0.4		
	B		0.2 $\pm$ 0.2		
<i>C. crangon</i>	A		0.3 $\pm$ 0.3		
	D		0.2 $\pm$ 0.2		
	B		13.0 $\pm$ 13.0		
Group A	A		200.0 $\pm$ 179.5		1.0 $\pm$ 1.0
	D		26.8 $\pm$ 17.5		0.2 $\pm$ 0.2
	B		145.9 $\pm$ 125.0		184.0 $\pm$ 184.0
Group B	A		277.0 $\pm$ 267.0	994.0 $\pm$ 270.8	362.5 $\pm$ 329.5
	D		72.6 $\pm$ 17.1	99.9 $\pm$ 0.1	99.6 $\pm$ 0.3
	B		210.0 $\pm$ 82.0	2963.0 $\pm$ 990.0	806.0 $\pm$ 766.0
Group C	A			0.8 $\pm$ 0.8	1.0 $\pm$ 1.0
	D			0.1 $\pm$ 0.1	0.2 $\pm$ 0.2
	B			0.1 $\pm$ 0.1	0.2 $\pm$ 0.2
Total Nr. Species			10	4	7
Nr. species/0.1 m <sup>2</sup>			5.7 $\pm$ 1.2	3.3 $\pm$ 0.3	4.0 $\pm$ 3.0
Nr. individuals/0.1 m <sup>2</sup>			479.0 $\pm$ 222.5	995.0 $\pm$ 270.8	364.5 $\pm$ 331.5
Wet weight biomass mg/0.1m <sup>2</sup>			369 $\pm$ 135	2935 $\pm$ 1011	1414 $\pm$ 1373
HY'			0.848 $\pm$ 0.171	1.013 $\pm$ 0.100	0.086 $\pm$ 0.086
J			0.345 $\pm$ 0.043	0.601 $\pm$ 0.056	0.030 $\pm$ 0.030
Description			The lagoon communicated with the sea	The lagoon was isolated from the sea	The lagoon was isolated from the sea and its major part was drained (DC site)

TABLE 4

Comparison between two and three sampling periods (Fisher LSD coefficient and factor-F correspondingly) concerning number of species, total number of individuals, total biomass, species diversity (HY') and evenness (J).

Sample group	Nr. species	Nr. individuals	Biomass	HY'	J
Sept. 81 - July 97	1.133	2.053	2.682	0.538	0.415*
Sept. 81 - Sept. 98	1.355	2.453	3.205	0.813*	0.628*
July 97 - Sept. 98	1.285	2.327	3.041	0.788*	0.608*
Sept. 81 - July 97 - Sept. 98	1.008	1.727	2.105	16.714**	46.515***
where :			*P<0.05	**P<0.01	***P<0.001

diversity and evenness) of each sampling period are summarized in Table 3. Total number of species and mean number of species had comparatively higher values during September 1981 (Table 3). Total density and biomass had comparatively higher mean values during July 1997 (Table 3). Species diversity and evenness showed significantly lower values in September 1998 samples while evenness had significantly higher values in July 1997 samples (Fisher LSD coefficient,  $P<0.05$ ) (Tables 3 and 4). The statistics of the differences in the number of

species, total density, total biomass, species diversity and evenness, concerning the 3 sampling periods, are given in Table 4.

## DISCUSSION

Species group B showed increased numbers of individuals and dominance in July 1997 and September 1998 samples, in relation to September 1981 ones. The 3

species of this group are resistant estuarine species. *Hydrobia* sp. was the only species that appeared in all samples collected from Drana lagoon during September 1981, July 1997 and September 1998. Moreover, it was the most dominant species in all sampling periods. *Hydrobia* species, being characteristic inhabitants of brackish waters, tolerate extreme salinity values and usually prefer areas isolated from the sea (e.g. MARAZANOF, 1969; KEVREKIDIS et al., 1996). *H. diversicolor* and *G. aequicauda* showed a remarkable abundance and dominance only in July 1997 samples. These species are considered characteristic inhabitants of brackish waters, showing a very euryhaline and resistant character and having usually higher abundance in areas isolated from the sea (e.g. KEVREKIDIS & KOUKOURAS, 1988; GOUVIS et al., 1998).

Species group A, including 2 estuarine species (*A. ovata* and *C. glaucum*) and 3 marine species (*C. giardi*, *S. tridentata* and *M. slabberi*), showed a remarkable dominance only in September 1981 samples. *A. ovata* and *C. glaucum* have been considered characteristic inhabitants of brackish waters preferring areas with a greater degree of contact with the sea, than *Hydrobia* species (e.g. FRISONI et al., 1984; KEVREKIDIS et al., 1996). *C. giardi*, *S. tridentata* and *M. slabberi*, together with *S. decoratus* and *C. crangon*, were not found in July 1997 and September 1998 samples. All these species are marine ones occurring more or less often in estuaries and lagoons (e.g. BELLAN, 1971; MAKINGS, 1977; HATZAKIS, 1982; HOLTHUIS, 1987; GRAVINA et al., 1988; ARVANITIDIS, 1994; GOUVIS et al., 1998).

Species group C including 2 estuarine species (*S. shrubsolii* and *C. orientale*) was found only in July 1997 and September 1998 samples, having a very low dominance. *S. shrubsolii* has been reported in enclosed, brackish European zones (e.g. SARDA & MARTIN, 1993). *C. orientale* is an exclusive inhabitant of lagoons being very euryhaline, but showing a less resistant character than *G. aequicauda* (e.g. KEVREKIDIS & KOUKOURAS, 1988).

The alteration in the faunal composition in July 1997 and September 1998 in relation to September 1981 characterized by the vanishing of marine species and the increase both in dominance and number of individuals of the most resistant estuarine species (*Hydrobia* sp., *H. diversicolor*, *G. aequicauda*) may mainly be the result of Drana lagoon's isolation from the sea. FRISONI et al. (1984) reported that hydrological factors must be responsible for the biological organization of the Mediterranean lagoons rather than hydrochemical or sedimentological factors, mainly because they control the rate of exchange with the open sea and consequently the renewal rhythm of certain marine elements necessary for the organisms (vitamins, trace elements, etc.). The small difference in sampling times during the summer period of 1981 and of 1997 (September and July respectively) should not play a noticeable role in the alteration in the faunal composition since the species composition of an estuarine assemblage

remains generally homogeneous throughout the year (BOESCH et al., 1976; GOUVIS et al., 1997; KEVREKIDIS, 1997).

Furthermore, the lagoon's isolation from the sea resulted in the temporary drainage of the major part of the lagoon during September 1998, when *Hydrobia* sp. showed a 98% dominance and an increased abundance at the submerged site and was the only species found at the emerged one. All *Hydrobia* sp.p. possess the ability to survive periods of emergence by burrowing into substrate and closing the operculum (BRITTON, 1985). Moreover, BRITTON (1985) reported that *H. acuta* is able to survive up to four months in a state of inactivity within damp clay or sand.

Species diversity and evenness showed significantly lower mean values in September 1998 samples while evenness had a significantly higher mean value in July 1997. Moreover, evenness mean values of September 1981 and 1998 samples being lower than 0.6 indicate, according to ODUM (1980) scale, that the assemblage was under pressure mainly during these periods.

Finally the development of the macrobenthic fauna of Drana lagoon after its reflooding is of a special interest and is the subject of research that is in progress.

## REFERENCES

- ARVANITIDIS, C. (1994). *Systematic and bionomic study of macrobenthic polychaetes (Annelida, Polychaeta) in the North Aegean Sea*. Ph.D. Thesis, University of Thessaloniki, 507 pp.
- ARVANITIDIS, C., D. KOUTSOUBAS, C. DOUNAS & A. ELEFThERIOU (1999). Annelid fauna of a Mediterranean lagoon (Gialova Lagoon, south-west Greece): community structure in a severely fluctuating environment. *J. Mar. Biol. Ass. U.K.*, 79: 849-856.
- BELLAN, G. (1971). Étude sommaire des Polychètes des horizons supérieurs de l'étage infralittoral sur substrat dur dans la région provençale. *Rapp. Comm. Int. Mer Médit.*, 20 (3): 217-219.
- BOESCH, F.D., M. WASS & R. VIRNSTEIN (1976). The dynamics of estuarine benthic communities. In: WILEY (ed.), *Estuarine processes*, New York Academic Press: 177-196.
- BRITTON, R.H. (1985). Life cycle and production of *Hydrobia acuta* Drap. (Gastropoda: Prosobranchia) in a hypersaline coastal lagoon. *Hydrobiologia*, 122: 219-230.
- FRISONI, G., O. GUELORGET & J.P. PERTHUISOT (1984). Diagnose ecologique a la mise en valeur biologique des lagunes cotieres Méditerranéennes: Approche methodologique. *FAO (F.A.O.U.N.) Gen. Fish Conn. Mediterr. Stud. Rev.*, 1(61): 39-95.
- GOUVIS, N., T. KEVREKIDIS & A. KOUKOURAS (1997). Temporal changes of a macrobenthic assemblage in Evros Delta (North Aegean Sea). *Int. Rev. Ges. Hydrobiol.*, 82: 67-80.
- GOUVIS, N., T. KEVREKIDIS, A. KOUKOURAS & E. VOULTSIADOU (1998). Bionomy of macrobenthic polychaetes in the Evros Delta (North Aegean Sea). *Internat. Rev. Hydrobiol.*, 83: 145-161.

- GRAVINA, M.F., G.D. ARDIZZONE & A. GIANGRANDE (1988). Selecting factors in polychaete communities of central Mediterranean coastal lagoons. *Int. Rev. Ges. Hydrobiol.*, 73: 465-476.
- GUELORGET, O. & P. MICHEL (1979a). Les peuplements benthiques d'un étang littoral languedocien l'étang du Prevost (Hérault). 1. Etude quantitative de la macrofaune des vases. *Téthys*, 9: 49-64.
- GUELORGET, O. & P. MICHEL (1979b). Les peuplements benthiques d'un étang littoral languedocien l'étang du Prevost (Hérault). 2. Etude quantitative de la macrofaune des sables. *Téthys*, 9: 65-77.
- HATZAKIS, A. (1982). Mysidacea of Greek Seas (morphotaxonomy, eco-geography, bionomics) (in Greek). Ph.D Thesis, University of Athens, 208 pp.
- HOLTHUIS, L.B. (1987). Crevettes. In: W. FISCHER, M. SCHNEIDER & M.L. BAUCHOT (eds), Fiches FAO d'identification des espèces pour les besoins de la pêche, Revision 1, Méditerranée et mer Noire, Zone de Pêche 37, I Végétaux et Invertébrés, Rome, FAO: 189-291.
- KEVREKIDIS, T. (1997). Seasonal variation of the macrobenthic fauna in an isolated area of the Evros Delta (North Aegean Sea). *Israel J. Zool.*, 43: 243-255.
- KEVREKIDIS, T., N. GOUVIS & A. KOUKOURAS (1996). Bionomy of macrobenthic molluscs in Evros Delta (North Aegean Sea). *Int. Rev. Ges. Hydrobiol.*, 81: 455-468.
- KEVREKIDIS, T. & A. KOUKOURAS (1988). Bionomy of the amphipods in the Evros Delta (North Aegean Sea). *Mar. Ecol. P.S.Z.N.I.*, 9: 199-212.
- LANCE, G.N. & W.T. WILLIAMS (1967). A general theory of classificatory sorting strategies. I. Hierarchical systems. *Comput. J.*, 9: 373-380.
- MAKINGS, P. (1977). A guide to the British coastal Mysidacea. *Fld. Stud.*, 4: 575-595.
- MARAZANOF, F. (1969). Contribution a l'étude ecologique des Mollusques des eaux douces et saumâtres de Camargue. I. Milleux-Especies. *Ann. Limnol.*, 5: 201-323.
- ODUM, E.P. (1980). Ecology. Holt Rinehart and Winston, London.
- REIZOPOULOU, S., M. THESSALOU-LEGAKI & A. NIKOLAIDOU (1996). Assessment of disturbance in Mediterranean lagoons: an evaluation of methods. *Mar. Biol.*, 125: 189-197.
- SARDA, R. & D. MARTIN (1993). Populations of *Streblospio* (Polychaeta: Spionidae) in temperate zones: Demography and production. *J. mar. biol. Ass. U.K.*, 73: 769-784.

